

Product datasheet for MR219279

Dcxr (NM_026428) Mouse Tagged ORF Clone

Product data:

Product Type:	Expression Plasmids
Product Name:	Dcxr (NM_026428) Mouse Tagged ORF Clone
Tag:	Myc-DDK
Symbol:	Dcxr
Synonyms:	0610038K04Rik; 1810027P18Rik; XR
Mammalian Cell Selection:	Neomycin
Vector:	pCMV6-Entry (PS100001)
E. coli Selection:	Kanamycin (25 ug/mL)
ORF Nucleotide Sequence:	>MR219279 representing NM_026428 Red=Cloning site Blue=ORF Green=Tags(s)

TTTTGTAATACGACTCACTATAGGGCGGCCGGAATTCGTCGACTGGATCCGGTACCGAGGAGATCTGCC
GCC**CGATCGCC**

ATGGACCTGGGGCTTGCAGGTCGGCGGGCGCTGGTCACCGGCGCGGGCAAAGGCATCGGGCGCAGCACTG
TGCTGGCGTTGAAGGCGGCTGGTGCACAGGTTGTGGCGGTGAGTCGGACGCGAGAGGACCTGGACGACCT
GGTCCGCGAGTGTCTGGTGTGGAGCCTGTGTGTGGACCTGGCCGACTGGGAGGCCACAGAGCAGGCC
CTAAGCAATGTGGACCCGTGGACCTTCTGGTGAACAATGCTGCTGTGGCTCTGTGCAGCCCTTCTGG
AGGTCACCAAGGAGGCCGTGACACATCCTTCAATGTGAATCTTCGGGCTGCATCCAGGTGTCTCAGAT
TGTGGCCAAGGGCATGATAGCTCGGGGAGTCCAGGAGCCATTGTGAATGTCTCCAGCCAGGCCTCCCAA
CGTGCACTGACCAACCTACTGTCTACTGTTCCACCAAGGGTGTCTGGACATGTTGACCAAGATGATGG
CCCTAGAGCTTGGGCCCCACAAGATCCGTGTGAATGCAGTAAACCCACAGTAGTGATGACACCCATGGG
CCGGACCAACTGGAGTGACCCCAAGCTAAGGCCATGCTGGATCGTATCCCCTGGGCAAGTTCCGT
GAGGTGGAGAACGTGTGGACACCATCTCTTCTGCTGAGCAACCGGAGTGGCATGACCACTGGCTCCA
CTTTGCCAGTGGATGGGGCTTCTGGCTACC

ACGCGTACGCGGCCGCTCGAGCAGAACTCATCTCAGAAGAGGATCTGGCAGCAAATGATATCCTGGATT
ACAAGGATGACGACGATAAGGTTTAA



[View online »](#)

Protein Sequence: >MR219279 representing NM_026428
Red=Cloning site Green=Tags(s)

MDLGLAGRRLVTGAGKIGRSTVLALKAAGAQQVAVSRTREDLDDLVRECPGVEPVCVDLADWEATEQA
 LSNVGPVDLLVNNAVALLPFLEVTKACDTSFNVNLRAVIQVSQIVAKGMIARGVPGAIVNVSSQASQ
 RALTNHTVYCSTKGALDMLTKMMALELPHKIRVNAVNPVVMTMPMGRNTNWSDPHKAKAMLDRIPLGKFA
 EVENVVDITILFLLSNRSGMTTGSTLPVDGGFLAT

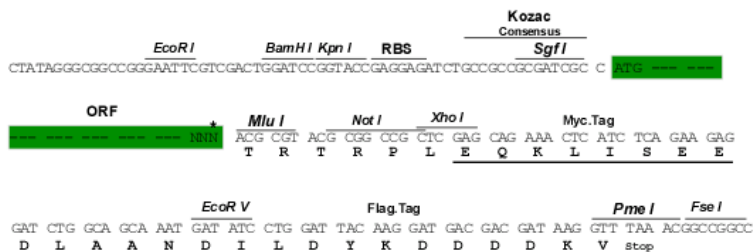
TRTRPLEQKLISEEDLAANDILDYKDDDDKV

Chromatograms: https://cdn.origene.com/chromatograms/mm9039_c03.zip

Restriction Sites: SgfI-MluI

Cloning Scheme:

Cloning sites used for ORF Shuttling:



* The last codon before the Stop codon of the ORF

ACCN: NM_026428

ORF Size: 732 bp

OTI Disclaimer: The molecular sequence of this clone aligns with the gene accession number as a point of reference only. However, individual transcript sequences of the same gene can differ through naturally occurring variations (e.g. polymorphisms), each with its own valid existence. This clone is substantially in agreement with the reference, but a complete review of all prevailing variants is recommended prior to use. [More info](#)

OTI Annotation: This clone was engineered to express the complete ORF with an expression tag. Expression varies depending on the nature of the gene.

Components: The ORF clone is ion-exchange column purified and shipped in a 2D barcoded Matrix tube containing 10ug of transfection-ready, dried plasmid DNA (reconstitute with 100 ul of water).

Reconstitution Method:

1. Centrifuge at 5,000xg for 5min.
2. Carefully open the tube and add 100ul of sterile water to dissolve the DNA.
3. Close the tube and incubate for 10 minutes at room temperature.
4. Briefly vortex the tube and then do a quick spin (less than 5000xg) to concentrate the liquid at the bottom.
5. Store the suspended plasmid at -20°C. The DNA is stable for at least one year from date of shipping when stored at -20°C.

RefSeq: [NM_026428.3](#)

RefSeq Size: 918 bp

RefSeq ORF: 735 bp

Locus ID: 67880

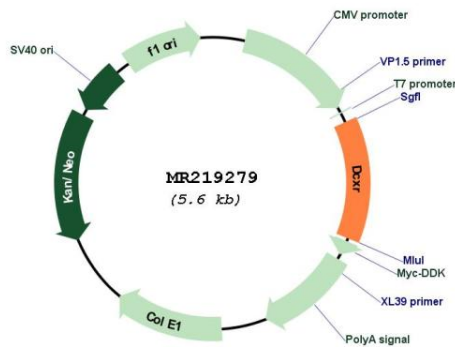
UniProt ID: [Q91X52](#)

Cytogenetics: 11 E2

MW: 26.2 kDa

Gene Summary: Catalyzes the NADPH-dependent reduction of several pentoses, tetroses, trioses, alpha-dicarbonyl compounds and L-xylulose. Participates in the uronate cycle of glucose metabolism. May play a role in the water absorption and cellular osmoregulation in the proximal renal tubules by producing xylitol, an osmolyte, thereby preventing osmolytic stress from occurring in the renal tubules.[UniProtKB/Swiss-Prot Function]

Product images:



Circular map for MR219279