

## Product datasheet for MR219227

### Cdk13 (NM\_001081058) Mouse Tagged ORF Clone

#### Product data:

**Product Type:** Expression Plasmids  
**Product Name:** Cdk13 (NM\_001081058) Mouse Tagged ORF Clone  
**Tag:** Myc-DDK  
**Symbol:** Cdk13  
**Synonyms:** 2310015O17Rik; Cdc2l5  
**Vector:** pCMV6-Entry (PS100001)  
**E. coli Selection:** Kanamycin (25 ug/mL)  
**Cell Selection:** Neomycin  
**ORF Nucleotide Sequence:** >MR219227 representing NM\_001081058  
 Red=Cloning site Blue=ORF Green=Tags(s)

TTTTGTAATACGACTCACTATAGGGCGCCGGGAATTCGTCGACTGGATCCGGTACCGAGGAGATCTGCC  
 GCC**CGGATCGCC**

ATGCCGAGTAGCTCGGACACGGCGCTGGGGGGAGGCGGGGCTGAGCTGGGCCGAGAAGAAGTTGGAGG  
 AGCGCCGAAGCGGAGGGGATTCTGTCCCTCAGCAGCCGCGCTGCTGTTGCCCTCTGCAGCCGCA  
 GCTCCTGCAACCGCCGCCCGCCCGCTCTGCTTCTCTGGTGCCCGGGCGGGCCGCCCGCA  
 GCCCGCCGCCCGCGGCTCCTCCTTCTGCTTACGCCCGGGCCCTCTCTGGAGGTCAAGCGGCTGGCGA  
 GAGGCAAGAGGGCGCCCGGAGGGCGGCAGAAGCGGCGCCGCGGGCCCGGCCGGCAGGAGGCGGAGAA  
 GCGCCGGGTCTTCTCGTGCAGCCAGCGCAGCAGGACGGCGGTGGCGGTGCCAGTAGCGCGGGGTGTG  
 ACCCCGCTGGTGGAGTACGAGGATGTGAGCTCCAGTCCGAGCAGGGGCTGCTGCTGGGGGGCGCCAGCG  
 CGGCAACGGCGGGCAGCGGCTGCCGGGGAAACGGGGGCAACGGCGGGAGTCCGGCCTCCTCCTCCGGCAC  
 GCAGAGGCGCGGAGGGGTGGAGCGCAGGCGCGCCGGGACCGCCGAGCAGCAGCGGGCCGAGCAAG  
 GAGCGCCACCGGAGCACCGGCGGGGACGGGACGCGCAGCGGAGGAGGCTCAAAGGCCCGCAGCC  
 GCCACGGACACAGCGGCGAGGAGCGGGGAGGCGCCCAAGAGCGGCAGCAGCAGCAGCGGGCGCCG  
 CCGCAAGAGCGCGTCCGGTACGTCCAGCAGCAGTACGAGCCGCAAGGACCGGACCTCAAGGCCACCCGC  
 AGCCGGACTAAGTCGTCCAAGGAACCGCCTCGGCCTACAAGGAGCCGCCAAGGCTACCGGGAGGACA  
 AGAGCGAGCCGAAGGCTACAGGCGGGCAGCGGTCCCTGAGCCGCTGGGAGGCGGGACGAAAGCCC  
 GGTGTCCACAGGGCTCGCAGAGCCTCGGAGCCGCAAGTCCCCAGTCCGGCGGGAGGTGGCAGCAGT  
 CCTTATCCCGCGGCTGCCGCTCCCGAGCCCTATAGCCGGCGCGCTCGCCAGCTACAGCCGCC  
 ACAGCTCTACGAGCGGGCGGGACGTATCCCCAGCCGTCAGCAGCAGCAGCTGGCGGCGCTCGG  
 CAGCCCTACAGCCAGTACTCAGACGATCTGCCAAATCCGAAGCAGAAGCCATATTCATCTAGGCAC  
 TCAAGATCTCGGAGCAGCACAGATTGTCTAGATCAAGAAGTCGTCATTCAAGCATTCTCTAGCACAC  
 TAACTCTGAAGAGTAGCTTGGCAGCTGAATTGAACAAGAATAAAAAGGCAGGAGCTGCAGAGGCAGCAAG  
 AGCTGCAGAGGCAGAAAAGCTGCAGAAGCTGTAAGGCTGCTAAGCAGCTGCCAAAGCTGCCAAAGCC  
 TCAATGCTTCTACACCTACCAAGGGAACACAGAAACTGGTGCCAGTGTCTCACAGACAAACCATGTGA



View online »

AGGAAGTCAAAAACTTAAACTGAGCATGCACCTTCTCCTTCAAGTGGTGGGACCGTCAAAAGCGACAA  
AGCAAAAACAAAGCCACCGCTTCAAGTAACAAAGGTAGACAATAATTTGACAGTAGAGAAAAGCCACCAAG  
AAAACAGTTGTTGGGAAGGAGAGTAAACCTGCTGCTACAAAGGAAGAACCAGTTTCCACTAAAGAGAAAA  
GCAAGCCACTCACACCAAGCACAGGAGCAAGGAGAAGGAGCAGCATGTGGCTTTAGTGACCTCTACGTT  
ACCGCCATTACCTTTGCCTCCCATGCTGCCTGAAGATAAAGATGCTGATAGCTTAAAGAGGCAACATTTCT  
GTCAAAGCAGTTAAAAAGAAGTAGAAAAGAACTCCGATGTCTGCTTGTGATTACCATTGCCCCCTG  
AGTTACCAGGAGGAGATGATCTTTCCAAGAGTCCAGAGGAGAAGAAAACAGCAGCACAGTTACATAGCAA  
ACGAAGGCCTAAAAATATGTGGCCCTCGCTATGGTGAAATCAAAGAAAAAGATATTGACTGGGGAAACGC  
TGCGTGGATAAATTTGATATCATCGGAATTATTGGAGAAGGTAATGACAAAGTTTACAAAGCCAGGG  
ACAAAGACACGGGAGAAATGGTAGCCTTAAAGAAAGTACGTCTGGATAATGAAAAGGAGGGTTTCCCAAT  
TACAGCAATTAGAGAAATTTAAATTTCTCGGCACTCACCCACCAGAGTATCATCAATATGAAGGAAATC  
GTGACTGATAAAGAAGATGCTTTGGATTTAAGAAAGACAAGGTGCATTTTACCTGGTGTGTAATATA  
TGGACCATGATCTGATGGGACTGCTGGAATCAGGCTTGGTTCATTTTAAAGAAACCATATAAAATCTTT  
TATGAGACAGCTCATGGAAGCCTGGATTATTGTCATAAGAAGAACTTTTGCATAGAGATTAATATGT  
TCAAATATCCTTCTAAATAATAGAGGACAGATAAAACTTGCAGATTTTGGACTTGTCTGTTATATAGCT  
CAGAAGAAAGTCGCCATATACTAACAAGTCACTTGTGGTATCGTCCACCTGAATTGCTCTTGGG  
AGAAGAACGATATACACCAGCCATTGATGTATGGAGCTGTGGATGTATCCTTGGTGAACCTTCACTAAA  
AAACCTATATTTCAAGCAAACAGGAACCTGCACAGCTAGAGCTAATAAGCCGTATATGTGGGAGTCCAT  
GTCCTGCAGTGTGGCCTGATGTAATCAAAGTCCATATTTCAACACCATGAAACCAAAGAAGCAATATCG  
GCGGAAGTTAAGAGAAGAATTTGTTTTCATCCCGCAGCTGCACTCGACTTATTCGATTACATGCTTGCC  
TTGGATCCCAGTAAGCGCTGCACTGCTGAGCAGGCTCTCAGTGTGAGTTCCTGCGAGACGTGGAACCT  
CCAAAAAGCCTCCACCAGACCTTCTTTGTGGCAAGATTGTATGAATTTGGAGTAAAAAGAGAAGAAG  
ACAGAAACAGATGGGCATGACTGATGATCTTTCCACAATCAAAGCCCCTAGGAAGGACCTGTCTCTGGGC  
TTAGATGACAGCAGAACTAACACACCCAGGGTGTGCTGCCACCCGACAGTTGAAATCTCAGAGCAACT  
CAAATGTAGCACCTGTAATAACAGGCCCTGGACAGCCGTTAAACCACAGTGAATTGGCAATTTCTTCTAAA  
CCTACTACAATCTAAATCAAGTGTAAATATGGCTGATTTTGTCCAAGTGTGAACATTAAGGTAACTCT  
GAGACTCAACAGCAGCTAAATAAAATAAACCTTCTGCTGGAATTTTGGCAACAGGTGAAAAACAGACAG  
ATCCATCAACACCACAACAGGAGTCTTCAAATCATTGGGAGGAGTTCAGCCTTACAGACCATCCAGCC  
TAAAGTGGAACTGATGCTGCCAGGCTGCTGTGCAGAGTGCATTTGCAGTCTCTTGTACTCAGTTAATA  
AAGGCCAACAGTCCAAACAGAAAGATGCCATGCTAGAGGAAAGGAAAAATGGATCAGGACATGAAGCTC  
CATTGCAACTCAGGCCTCTCTAGAACCGAGCACTCCTGGATCCGGGCAAGATGACCTCATCCAGCACCA  
AGACAGGAGGATATTGGAGCTGACACCAGAACCAGACCGCCTCGAATTCTGCCTCTGATCAACCGCCT  
CCTGAACCTCCTGAACCACCACCAGTACTGAGGAGGACCTAGATTATCGGACAGAAAACCAGCATGTTT  
CTACCACTAGTTCTTCAATTAAGTACCCACATGCTGGAGTGAAGGCAGCCCTTACAGCTGCTTGTCTCA  
GCATCAGCCCCAGGATGATCCCAAAAGAGAAGGTGGTATCGATTATCCCACAGGAGACACATATGTGCC  
AGTTACAGACTATAAGGACAACCTTGGATCTTCTTCTCTGCCGCTCCTTACGTTAGCAGTGTGGTCTAG  
GAAGTAGTCCGCTGCTGCACATTGGAAGCACGTAGTTTCAATGGAACTCAGATATTCAGTCTCTGGA  
TAACTACAGTACTGCTTCTCACACTTGGTGGTCCACCTCAAATCTGCTTACTGAGTCTGTTGCC  
AGTTCAGTACTGGATATGGAGACATTTACCTCAATGCTGGTCCCATGTTGTTAGTGGAGACAAGGACC  
ATAGATTTGAATATAGCCATGGTCTATCACAGTCTCACAAACAGCAATGACCCCTTCCACAGGGCCAGA  
GAGTACTCATCCCTTGCAGCAAAGATGCACAATAAATATGTTGGTAACTTACAGGAAAATCCAGGT  
GGCCCTAGCCTCATGATGGACAGACCTGGACTTCTCCTGCCAAGGACCTGGATATTCACAAGGATACA  
GGGGACACATTAGCACATCAGCTGGCAGAGGTCGAGGCAGAGGGTTACCATAC

ACGCGTACGCGGCCGCTCGAGCAGAACTCATCTCAGAAGAGGATCTGGCAGCAATGATATCCTGGATT  
ACAAGGATGACGACGATAAGGTTTAA

**Protein Sequence:** >MR219227 representing NM\_001081058  
 Red=Cloning site Green=Tags(s)

```

MPSSSDTALGGGGGLSWAEKKLEERRKRRRFLSPQQPPLLLPLLQPQLLQPPPPPPPLFLAAPGAAAAA
AAAAAASSSCFSPGPPELVKRLARGKRRPGGRQKRRRGPRAQEAERKRVFSLPQPQQDGGGGASSGGGV
TPLVEYEDVSSQSEQLLLGGASAATAAAGGTGGNGGSPASSSGTQORRAEGSERRRRRSSSSGRSK
ERHREHRRRDGTRSGSEASKARSRHGHSGEERAEAAKSGSSSSSGRRKSASATSSSSSRKDRDLKAHR
SRTKSSKEPPSAYKEPPKAYREDKSEPKAYRRRQSLSPLGGRDESPVSHRASQSLRSRKSPPAGGGSS
PYSRRLPRSPSPYSRRRSPYSRHSSYERGGDVSPSPYSSSSWRRSRSPYSPVLRSAKSRSRSPYSSRH
SRSRSRHRLSRSRRHSSI*SPSTLTLKSSLAELNKNKKARAAEAARAAEAAKAAEAAKAAEAAKAAKA
SNASTPTKNGTETGASVSQTNHVKEVKLKT*EHAPSPSSGGTVKSDKAKTKPPLQVTKVDNNTLVEKATK
KTVVGKESKPAATKEEPVSTKEKSKPLTPSTGAKEKEQHVALVTSTLPPPLPPMLPEDKADSLRGNIS
VKAVKKEVEKKLRCLLADLPLPELPGDDLKSP*EKKTAAQLHSKRRPKICGPRYGEIKEKDIDWGKR
CVDKFDIIGIIGEGTYGQYKARDKDTGEMVALKKVRLDNEKEGFPITAI*REIKILRQLTHQSIINMKEI
VTDKEDALDFKKDKGAFYLVFEYMDHDL*MGLLESGLVHFNENHIKSFMRQLMEGLDYCHKKNFLHRDIK
SNILLNNRGQIKLADFLARLYSSESRPYTNKVI*TLWYRPELLLGEERYTPAIDVWSCGICL*GELFTK
KPIFQANQELAQLELISRICGSPCAVWPDVIK*LPYFNTMKPKQYRRKLREEFVFI*PAALDLFDYMLA
LDPSKRCTAEQALQCEFLRDVEPSKMPPDL*PLWQDCHELWSKRRRQKQMGMTDDLSTIKAPRKDSL*LG
LDDSRNTNPQGVLP*PAQLKSQNSNVAPVITGPGQPLN*HSELAILLNLLQSKSSVNMAD*FVQVLNIKVNS
ETQQQLNKINLPAGILATGEKQTD*PSTPQQESSKSLGGVQPSQTIQPKVETDAAQAAVQSAF*AVLLTQLI
KAQQSKQK*DAMLEERENGSGHEAPLQLRPPE*STPGSQDDL*IQH*DRRILELTPEDRPRILPPDQRP
PEPPEPPVTEEDLDYRTENQH*VPTTSSSLTDPHAGVKAALLQLLAQHQPQDDPKREGGIDYPTGDTYVP
SSDYKDNFGSS*SAAPYVSSDGLGSSAAAPLEARSFIGNSDIQSLDNYSTASSHTGGPPQTS*AFTE*SFA
SSVAGYGD*IYLNAGPMLFSGDKDRFEYSHG*ITVLTNSNDPSTGPESTHPLPAKMHN*YNYGGNLQENPG
GPSLMHGQ*TWTS*PAQGGY*SQGYR*GHI*STS*SAGRGR*RGL*PY
  
```

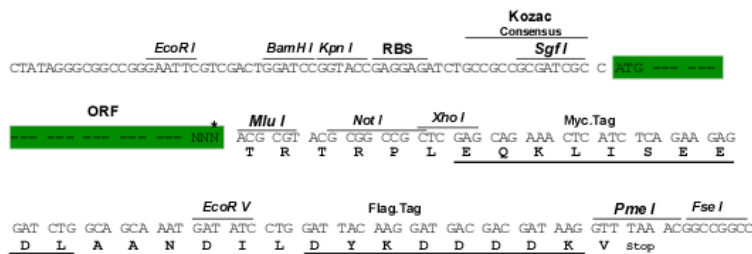
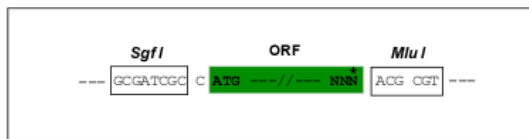
TRTRPLEQKLISEEDLAANDILDYKDDDDKV

**Restriction Sites:**

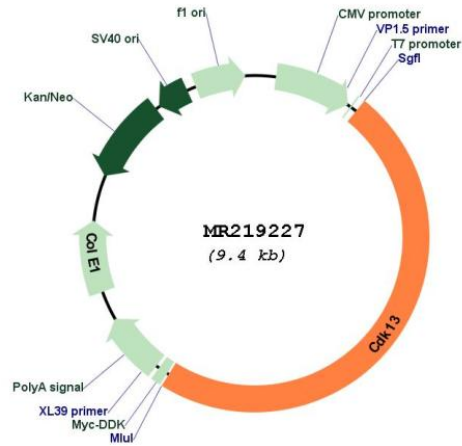
SgfI-MluI

**Cloning Scheme:**

Cloning sites used for ORF Shuttling:



\* The last codon before the Stop codon of the ORF

**Plasmid Map:**


**ACCN:** NM\_001081058

**ORF Size:** 4533 bp

**OTI Disclaimer:** The molecular sequence of this clone aligns with the gene accession number as a point of reference only. However, individual transcript sequences of the same gene can differ through naturally occurring variations (e.g. polymorphisms), each with its own valid existence. This clone is substantially in agreement with the reference, but a complete review of all prevailing variants is recommended prior to use. [More info](#)

**OTI Annotation:** This clone was engineered to express the complete ORF with an expression tag. Expression varies depending on the nature of the gene.

**Components:** The ORF clone is ion-exchange column purified and shipped in a 2D barcoded Matrix tube containing 10ug of transfection-ready, dried plasmid DNA (reconstitute with 100 ul of water).

**Reconstitution Method:**

1. Centrifuge at 5,000xg for 5min.
2. Carefully open the tube and add 100ul of sterile water to dissolve the DNA.
3. Close the tube and incubate for 10 minutes at room temperature.
4. Briefly vortex the tube and then do a quick spin (less than 5000xg) to concentrate the liquid at the bottom.
5. Store the suspended plasmid at -20°C. The DNA is stable for at least one year from date of shipping when stored at -20°C.

**RefSeq:** [NM\\_001081058.2](#), [NP\\_001074527.1](#)

**RefSeq Size:** 7081 bp

**RefSeq ORF:** 4536 bp

**Locus ID:** 69562

**UniProt ID:** [Q69ZA1](#)

**Cytogenetics:** 13 A2

**MW:** 165 kDa

**Gene Summary:** Cyclin-dependent kinase which displays CTD kinase activity and is required for RNA splicing. Has CTD kinase activity by hyperphosphorylating the C-terminal heptapeptide repeat domain (CTD) of the largest RNA polymerase II subunit RPB1, thereby acting as a key regulator of transcription elongation. Required for RNA splicing, probably by phosphorylating SRSF1/SF2. Required during hematopoiesis.[UniProtKB/Swiss-Prot Function]