

Product datasheet for MR219221L3

Otop1 (NM_172709) Mouse Tagged Lenti ORF Clone

Product data:

Product Type:	Expression Plasmids
Product Name:	Otop1 (NM_172709) Mouse Tagged Lenti ORF Clone
Tag:	Myc-DDK
Symbol:	Otop1
Synonyms:	A530025J20Rik; Otp1; tlt
Mammalian Cell Selection:	Puromycin
Vector:	pLenti-C-Myc-DDK-P2A-Puro (PS100092)
E. coli Selection:	Chloramphenicol (34 ug/mL)
ORF Nucleotide Sequence:	The ORF insert of this clone is exactly the same as(MR219221).
Restriction Sites:	SgfI-MluI
Cloning Scheme:	

Cloning sites used for ORF Shuttling:



* The last codon before the Stop codon of the ORF.

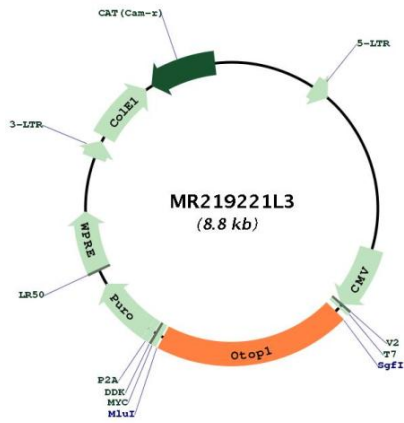
ACCN:	NM_172709
ORF Size:	1800 bp



[View online »](#)

OTI Disclaimer:	The molecular sequence of this clone aligns with the gene accession number as a point of reference only. However, individual transcript sequences of the same gene can differ through naturally occurring variations (e.g. polymorphisms), each with its own valid existence. This clone is substantially in agreement with the reference, but a complete review of all prevailing variants is recommended prior to use. More info
OTI Annotation:	This clone was engineered to express the complete ORF with an expression tag. Expression varies depending on the nature of the gene.
Components:	The ORF clone is ion-exchange column purified and shipped in a 2D barcoded Matrix tube containing 10ug of transfection-ready, dried plasmid DNA (reconstitute with 100 ul of water).
Reconstitution Method:	<ol style="list-style-type: none"> 1. Centrifuge at 5,000xg for 5min. 2. Carefully open the tube and add 100ul of sterile water to dissolve the DNA. 3. Close the tube and incubate for 10 minutes at room temperature. 4. Briefly vortex the tube and then do a quick spin (less than 5000xg) to concentrate the liquid at the bottom. 5. Store the suspended plasmid at -20°C. The DNA is stable for at least one year from date of shipping when stored at -20°C.
RefSeq:	NM_172709.3 , NP_766297.2
RefSeq Size:	3171 bp
RefSeq ORF:	1803 bp
Locus ID:	21906
UniProt ID:	Q80VM9
Cytogenetics:	5 20.35 cM
Gene Summary:	<p>Proton-selective channel that specifically transports protons into cells (PubMed:29371428). Proton channel activity is only weakly-sensitive to voltage (PubMed:29371428). Proton-selective channel activity is probably required in cell types that use changes in intracellular pH for cell signaling or to regulate biochemical or developmental processes (PubMed:29371428). In the vestibular system of the inner ear, required for the formation and function of otoconia, which are calcium carbonate crystals that sense gravity and acceleration (PubMed:12651873). Probably acts by maintaining the pH appropriate for formation of otoconia (PubMed:29371428). Regulates purinergic control of intracellular calcium in vestibular supporting cells (PubMed:17606897, PubMed:20554841). May be involved in sour taste perception in sour taste cells by mediating entry of protons within the cytosol (PubMed:29371428). Also involved in energy metabolism, by reducing adipose tissue inflammation and protecting from obesity-induced metabolic dysfunction (PubMed:24379350).[UniProtKB/Swiss-Prot Function]</p>

Product images:



Circular map for MR219221L3