

Product datasheet for MR219142

Thap3 (NM_001145929) Mouse Tagged ORF Clone

Product data:

Product Type: Expression Plasmids
Product Name: Thap3 (NM_001145929) Mouse Tagged ORF Clone
Tag: Myc-DDK
Symbol: Thap3
Synonyms: 2010013E08Rik; 2210418H06Rik
Mammalian Cell Selection: Neomycin
Vector: pCMV6-Entry (PS100001)
E. coli Selection: Kanamycin (25 ug/mL)
ORF Nucleotide Sequence: >MR219142 representing NM_001145929
 Red=Cloning site Blue=ORF Green=Tags(s)

TTTTGTAATACGACTCACTATAGGGCGCCGGGAATTCGTCGACTGGATCCGGTACCGAGGAGATCTGCC
 GCC**CGATCGCC**

ATGCCGAAGTCTTGCGCGGCCCGGCAATGCTGCAACCGCTACAGCAGCCGAGGAAGCAGCTCACCTTCC
 ACCGGTCCCCTCAGCCGCCCGGAGCTGTTGAGGGAGTGGTGCTCAACATCGGCCGGGCTGACTTCAA
 GCCTAAGCAGCACACAGTCATCTGCTCGGAACACTTCAGACCCGAGTGCTTCAGCGCCTTTGGGAACCGC
 AAGAACCTGAAACACAATGCTGTGCCACGGTGTTCGCTTTTCAGAACCCACAGAGGTCTTACCAGATC
 GAGAAGCAATGGAGGCCACGGAGCCGCTGGCCTGCCTGCCAGCCCTCTGGGGTTGAAGAGGCCCTTCC
 GGGACAGCCGTCTGATCACAGCTATGCCCTTTCGACTTGATACCTCAAAAAAAAAACTTTTCTCACA
 CTGAAGGAAAACAAGAGGCTTCGGAAGCGGCTGAAAGCCAGAGGCTGCTGTTGCGGAGGACATGTGCC
 GCCTGAGAGCCTACAGAGAGGGACAGCCGGGACCTCGGGCCAGACGGCCGGCACAGGGAAGC

ACGCGTACGCGGCCGCTCGAGCAGAACTCATCTCAGAAGAGGATCTGGCAGCAAATGATATCCTGGATT
 ACAAGGATGACGACGATAAGGTTTAA

Protein Sequence: >MR219142 representing NM_001145929
 Red=Cloning site Green=Tags(s)

MPKSCAARQCCNRYSSRRKQLTFHRFPFSRPELLREWVLNIGRADFKPKQHTVICSEHFRPECFSAFGNR
 KNLKHNAVPTVFAFQNPTEVLPDREAMEATEAAGLPASPLGLKRPLPGQPSDHSYALSDLTLKKKLFLT
 LKENKRLRKLKAQRLLLRRTCGRLRAYREGQPGRARRPAQGS

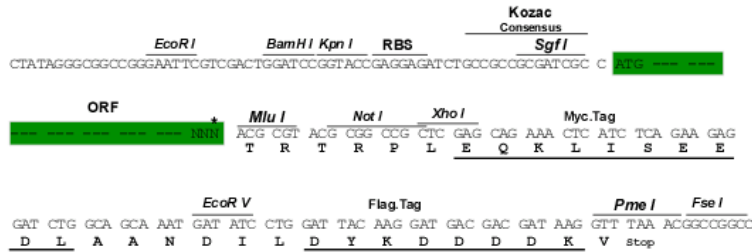
TRTRPLEQKLISEEDLAANDILDYKDDDDKV

Restriction Sites: Sgfl-MluI



Cloning Scheme:

Cloning sites used for ORF Shutting:



* The last codon before the Stop codon of the ORF

ACCN: NM_001145929

ORF Size: 552 bp

OTI Disclaimer: The molecular sequence of this clone aligns with the gene accession number as a point of reference only. However, individual transcript sequences of the same gene can differ through naturally occurring variations (e.g. polymorphisms), each with its own valid existence. This clone is substantially in agreement with the reference, but a complete review of all prevailing variants is recommended prior to use. [More info](#)
OTI Annotation: This clone was engineered to express the complete ORF with an expression tag. Expression varies depending on the nature of the gene.

Components: The ORF clone is ion-exchange column purified and shipped in a 2D barcoded Matrix tube containing 10ug of transfection-ready, dried plasmid DNA (reconstitute with 100 ul of water).

Reconstitution Method:

1. Centrifuge at 5,000xg for 5min.
2. Carefully open the tube and add 100ul of sterile water to dissolve the DNA.
3. Close the tube and incubate for 10 minutes at room temperature.
4. Briefly vortex the tube and then do a quick spin (less than 5000xg) to concentrate the liquid at the bottom.
5. Store the suspended plasmid at -20°C. The DNA is stable for at least one year from date of shipping when stored at -20°C.

RefSeq: [NM_001145929.1](#), [NP_001139401.1](#)
RefSeq Size: 1031 bp

RefSeq ORF: 555 bp

Locus ID: 69876

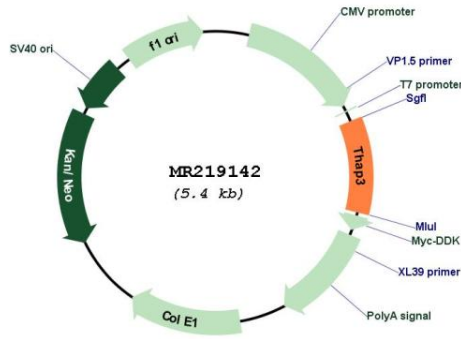
Cytogenetics: 4 E2

MW: 21.6 kDa

Gene Summary:

Component of a THAP1/THAP3-HCFC1-OGT complex that is required for the regulation of the transcriptional activity of RRM1.[UniProtKB/Swiss-Prot Function]

Product images:



Circular map for MR219142