

Product datasheet for **MR219081**

Cnm2 (NM_001102471) Mouse Tagged ORF Clone

Product data:

Product Type:	Expression Plasmids
Product Name:	Cnm2 (NM_001102471) Mouse Tagged ORF Clone
Tag:	Myc-DDK
Symbol:	Cnm2
Synonyms:	Acdp2; AU015877; AW048635; Clp2
Mammalian Cell Selection:	Neomycin
Vector:	pCMV6-Entry (PS100001)
E. coli Selection:	Kanamycin (25 ug/mL)



[View online »](#)

ORF Nucleotide Sequence:

>MR219081 representing NM_001102471
 Red=Cloning site Blue=ORF Green=Tags(s)

TTTTGTAATACGACTCACTATAGGGCGGCCGGGAATTCGTCGACTGGATCCGGTACCGAGGAGATCTGCC
 GCC**CGGATCGCC**

ATGATTGGCTGTGGCGCTTGTGAACCCGAAGTAAAGATGGCGGGCGGGCAGGCAGCCGCCCACTGCCCA
 CTTGGAAGATGGCGGCGCGCCGACGCTCAGTCCCGCGGCCGGGGGTCTGCAAGCAGCTGCGGGCCG
 GCTGCTGCCGCTGCTACTGCTGAGCTGCTGCTGGGGAGCGGGCGGCTGCACAGCGCCGGCGAGAACGAG
 GAGACCGTGATCATCGGGCTGCGGCTGGAGGATACGAACGACGTGTCTTTCATGGAAGGGGGTCTCTGC
 GGGTGAGCGAGCGGACCCGGGTCAAGCTGCGGGTGTACGGGCAGAACATCAACAACGAGACGTGGTCCCG
 CATCGCCTTCACTGAGCAGGAGCGGGCGCCGACACACCCAGCGAGCGTGGGCTGGGGGGCCCCGCGCT
 CCGGAGCCGGACAGCGGCCCCAGCGCTGCGGCATCCGCACCTCAGACATCATCATCTTGCCCCACATCA
 TTCTCAATCGCCGACATCGGGCATCATCGAGATCGAGATTAACCGCTGCGCAAGATGGAGAAGAGCAA
 GTCTTATTACCTGTGACGTCTCTCTCCACGCCGCACTAGGCGCCGGCGGCTCCGGGTCTGCGAGTGGC
 ACCGTGCGGGGCAAGGGTGGCGCGGGGGTGGCCGACTCCCGCTCCTCCGTGGGCCGAGACCACCTGGA
 TTTACCACGACGGTGAGGACACCAAGATGATAGTGGGCGAGGAGAAGAAGTTCTTGTGCCCTTCTGGCT
 GCAAGTGATCTTCATCTCGCTGCTGTGCTGTGCGGCATGTTGAGCGGCTCAACCTGGGGCTCATG
 GCTCTGGACCCGATGGAGCTGCGCATCGTCAAAAAGTGGCGCACGGAGAAAGAGAAGAATTATGCCAAGC
 GCATCGAGCCGGTGGCGAGGCAGGGCAACTACCTGCTGTGCTCGCTGCTGCTGGGCAACGTAAGTGGTCAA
 CACCACGCTCACCATCCTGCTGGACGACATTGCGGGCTCAGGCCCTGTGGCGGTGGTGGTCTCCACCATT
 GGCATCGTCATCTTCGGAGAAATCGTCCCCAAGCCATCTGCTCCCGACACGGCCTGGCGGTAGGGGCCA
 ACACCATCTTCTCACCAGTTTTTTCATGATGATGACATTCCTCCGCTTCTTATCCGGTTAGCAAATCT
 GGACTGCGTCTGGGCCAGGAGATAGGCACGGTCTATAACCGGGAAAAACTGCTGGAGATGCTCCGGGTT
 ACTGACCCTATAACGACCTCGTTAAGGAAGAGCTGAACATCATCCAAGGGCGCTGGAGCTCCGACCA
 AGACGGTGGAGGACGTGATGACTCCCTCAGGGACTGCTTCATGATAACCGGCGAGGCTATCCTGGACTT
 CAACACCATGTCGGAGATCATGGAGAGTGGCTACACTCGAATCCCGGTGTTGAGGGAGAACGTTCCAAC
 ATCGTGGACCTGCTTTTGTCAAAGACTTGGCCTTCGTGGATCCGGATGACTGTAATCCCTTGAAAACCA
 TCACCAAGTTTTACAATCACCCTTTCGACTTCTGTTTTCAACGACACCAAGTTGGACGCTATGCTGGAAGA
 ATTTAAGAAAGGGAAATCCACCTGGCCATTGTGCAGCGAGTGAACAATGAGGGTGAAGGGGACCCATTT
 TATGAAGTCTGGGAATTGTACCTTGAAGATGTGATTGAAGAATCATCAAATCTGAAATCTTGGATG
 AGACAGACCTGTACACCGATAACAGAACAAAAAGAAAGTGGCCACCGTGAAAGAAAGCAAGATTTCTC
 TGCCTTAAGCAGACGGACAGCGAGATGAAGGTTAAAATATCACCGCAGCTTCTCCTGGCCATGCACCGT
 TTCTTAGCAACAGAAGTAGAAGCGTTTAGCCATCCCAGATGTCAGAGAAGATCCTCCTAAGGCTGCTAA
 AGCACCCCAATGTCATCCAGGAGCTGAAGTACGACGAGAAGAACAAGAAAGCCCTGAGTGTACCTCTA
 CCAGCGGAACAAGCCGTAGACTACTTCGTCCTCATTCTTCAGGGGAAGGTGGAGGTGGAAGCTGGGAAA
 GAAGGCATGAAGTTTGAAGCCAGCGCTTCTCCTACTATGGTGTGATGGCCCTCACAGCCTCTCCAGGG
 AAAATAAGTCACTCCTCGCCCTGTGGCTGAATCACTCAGATTCTCTCAGTGGAGCGACCGGATTGA
 CGCCATGACGCCAACCTTGGGGAGCAGCAACAACCAGCTCAGCTTTCCTTCAAGTCTACATCCCT
 GACTACTCAGTACGAGCCCTCTGACCTACAGTTCGTCAGATCTCCAGACAGCAATACCAAATGCCT
 TGATGGCTCTCGGATGGACAAAACGCCTCAGTCTTCAGACAGTAAAAATACTAAAATTGAATTGACTCT
 TACGGAGTGCATGACGGCTTGCCAGATGAGACGGCCAATTGCTCAATGAACAGAACTGTGTGTACAC
 AACAAAGGCCAACACAGCCTGCACAGTGAAGGCGCCATC

ACCGTACGCGGCCGCTCGAGCAGAACTCATCTCAGAAGAGGATCTGGCAGCAATGATATCCTGGATT
 ACAAGGATGACGACGATAAGGTTTAA

Protein Sequence: >MR219081 representing NM_001102471
 Red=Cloning site Green=Tags(s)

MIGCGACEPEVKMAGGQAAAAALPTWKMAARRSLSARGRGLVQAAAGRLLPLLLLSCCWGAGGCTAAGENE
 ETVIIGLRLEDTNDVSFMEGGALRVSERTRVRLRVYVQINNETWSRIAFTEHERRRHPTSERLGGPAP
 PEPDSDGPQRCGIRTSIIILPHIILNRRTSGIIEIEIKPLRKMESKSYLCTSLSTPALGAGGSGSASG
 TVGGKGGAGVAGLPPPPWAETTWIYHDGEDTKMIVGEEKFLLPFWLQVIFISLLCLSGMFSGLNLGLM
 ALDPMELRIVQNGTEKEKNYAKRIEPRRQGNVLLCSLLGNVLYNTTLLTILLDDIAGSGLVAVVSTI
 GIVIFGEIVPQAICSRHGLAVGANTIFLTKFFMMTFPASYPVSKLLDCVLGQEIGTVYVYREKLEMLRV
 TDPYNDLVKEELNIIQGALELRKTVEDVMTPLRDCFMITGEAILDFNTMSEIMESGYTRIPVFEGERSN
 IVDLLFVKDLAFVDPDDCTPLKTKFYHPLHFVFNDFKLDAMLEEFKKGKSHLAIVQRVNEGEGDPF
 YEVLGIVTLEDVIEEIKSEILDETDLYDNRTKKKVAHREKQDFSAFKQTDSEMKVKISPQLLAMHR
 FLATEVEAFSPSQMSEKILLRLLKHPNVIQELKYDEKNKAPECYLYQRNKPVDYFVILIQKVEVEAGK
 EGMKFEASAFSYGVMALTASPGENKSPRRCGLNHSDSLSRSDRIDAMTPTLGSSNNQLSSSFLQVYIP
 DYSVRALSDLQFVKISRQQYNALMASRMDKTPQSSDSENTKIELTLTELHDGLPDETANLLNEQNCVSH
 NKANHSLHSEGAI

TRTRPLEQKLISEEDLAANDILDYKDDDDKV

Restriction Sites:

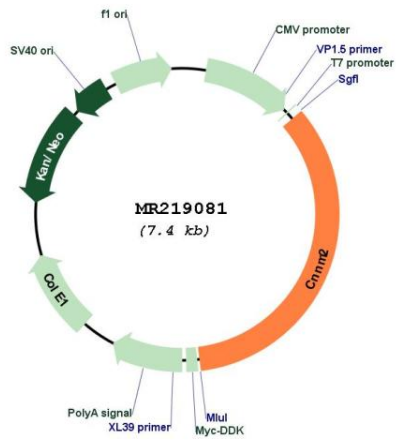
Sgfl-MluI

Cloning Scheme:



ACCN:	NM_001102471
ORF Size:	2559 bp
OTI Disclaimer:	The molecular sequence of this clone aligns with the gene accession number as a point of reference only. However, individual transcript sequences of the same gene can differ through naturally occurring variations (e.g. polymorphisms), each with its own valid existence. This clone is substantially in agreement with the reference, but a complete review of all prevailing variants is recommended prior to use. More info
OTI Annotation:	This clone was engineered to express the complete ORF with an expression tag. Expression varies depending on the nature of the gene.
Components:	The ORF clone is ion-exchange column purified and shipped in a 2D barcoded Matrix tube containing 10ug of transfection-ready, dried plasmid DNA (reconstitute with 100 ul of water).
Reconstitution Method:	<ol style="list-style-type: none">1. Centrifuge at 5,000xg for 5min.2. Carefully open the tube and add 100ul of sterile water to dissolve the DNA.3. Close the tube and incubate for 10 minutes at room temperature.4. Briefly vortex the tube and then do a quick spin (less than 5000xg) to concentrate the liquid at the bottom.5. Store the suspended plasmid at -20°C. The DNA is stable for at least one year from date of shipping when stored at -20°C.
RefSeq:	NM_001102471.1 , NP_001095941.1
RefSeq Size:	3264 bp
RefSeq ORF:	2562 bp
Locus ID:	94219
UniProt ID:	Q3TWN3
Cytogenetics:	19 38.97 cM
MW:	94.9 kDa
Gene Summary:	Divalent metal cation transporter. Mediates transport of divalent metal cations in an order of Mg(2+) > Co(2+) > Mn(2+) > Sr(2+) > Ba(2+) > Cu(2+) > Fe(2+).[UniProtKB/Swiss-Prot Function]

Product images:



Circular map for MR219081