

Product datasheet for MR219080L3

Mrps27 (NM_173757) Mouse Tagged Lenti ORF Clone

Product data:

Product Type:	Expression Plasmids
Product Name:	Mrps27 (NM_173757) Mouse Tagged Lenti ORF Clone
Tag:	Myc-DDK
Symbol:	Mrps27
Synonyms:	2610028H14Rik
Mammalian Cell Selection:	Puromycin
Vector:	pLenti-C-Myc-DDK-P2A-Puro (PS100092)
E. coli Selection:	Chloramphenicol (34 ug/mL)
ORF Nucleotide Sequence:	The ORF insert of this clone is exactly the same as(MR219080).
Restriction Sites:	SgfI-RsrII
Cloning Scheme:	

Cloning sites used for ORF Shuttling:



* The last codon before the Stop codon of the ORF.

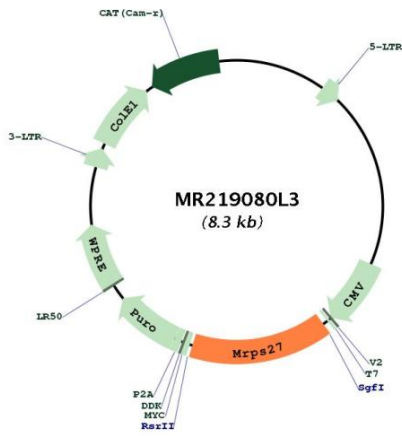
ACCN:	NM_173757
ORF Size:	1245 bp



[View online »](#)

OTI Disclaimer:	The molecular sequence of this clone aligns with the gene accession number as a point of reference only. However, individual transcript sequences of the same gene can differ through naturally occurring variations (e.g. polymorphisms), each with its own valid existence. This clone is substantially in agreement with the reference, but a complete review of all prevailing variants is recommended prior to use. More info
OTI Annotation:	This clone was engineered to express the complete ORF with an expression tag. Expression varies depending on the nature of the gene.
Components:	The ORF clone is ion-exchange column purified and shipped in a 2D barcoded Matrix tube containing 10ug of transfection-ready, dried plasmid DNA (reconstitute with 100 ul of water).
Reconstitution Method:	<ol style="list-style-type: none">1. Centrifuge at 5,000xg for 5min.2. Carefully open the tube and add 100ul of sterile water to dissolve the DNA.3. Close the tube and incubate for 10 minutes at room temperature.4. Briefly vortex the tube and then do a quick spin (less than 5000xg) to concentrate the liquid at the bottom.5. Store the suspended plasmid at -20°C. The DNA is stable for at least one year from date of shipping when stored at -20°C.
RefSeq:	NM_173757.3 , NP_776118.2
RefSeq Size:	1849 bp
RefSeq ORF:	1248 bp
Locus ID:	218506
UniProt ID:	Q8BK72
Cytogenetics:	13 D1
Gene Summary:	RNA-binding component of the mitochondrial small ribosomal subunit (mt-SSU) that plays a role in mitochondrial protein synthesis. Stimulates mitochondrial mRNA translation of subunit components of the mitochondrial electron transport chain. Binds to the mitochondrial 12S rRNA (12S mt-rRNA) and tRNA(Glu). Overexpressed in hepatocellular carcinoma tissues compared with adjacent non-tumoral liver tissues.[UniProtKB/Swiss-Prot Function]

Product images:



Circular map for MR219080L3