

Product datasheet for **MR219017**

Acap2 (NM_030138) Mouse Tagged ORF Clone

Product data:

Product Type:	Expression Plasmids
Product Name:	Acap2 (NM_030138) Mouse Tagged ORF Clone
Tag:	Myc-DDK
Symbol:	Acap2
Synonyms:	4832442G16; 9530039J15Rik; Centb2; CNT-B2; mKIAA0041
Mammalian Cell Selection:	Neomycin
Vector:	pCMV6-Entry (PS100001)
E. coli Selection:	Kanamycin (25 ug/mL)



[View online »](#)

ORF Nucleotide Sequence:

>MR219017 representing NM_030138
 Red=Cloning site Blue=ORF Green=Tags(s)

TTTTGTAATACGACTCACTATAGGGCGGCCGGAATTCGTCGACTGGATCCGGTACCGAGGAGATCTGCC
 GCC**CGCATCGCC**

ATGAAGATGACGGTGGATTTTCGAGGAGTGTCTGAAGGACTCGCCCGCTTCAGGGCTGCTTTGGAAGAGG
 TAGAAGGAGATGTGGCTGAGCTGGAACAAAACTCGACAAGCTTGTGAACTGTGTATCGCGATGATTGA
 CACTGGCAAAGCCTTTTGTGTTGCAAATAAACAGTTCATGAATGGGATCCGAGACCTGGCCCACTATTCT
 AGCAATGATGCTGTGGTTGAGACAAGTTTGACCAAGTTTTCTGACAGTCTTCAGGAAATGATCAATTTCC
 ACACAATTCTGTTTGACCAAAACCCAGAGATCAATTAAGGCCAGCTTCAGAACTTTGTCAAAGAAGATCT
 TAGAAAATTCAAAGATGCCAAGAAAACAATTTGAAAAAGTCAGTGAAGAAAAGGAAAACGCACTAGTAAAA
 AATGCCCAAGTTCAAAGAAAACAACAGCAGCAGGTTGAAGAGGCTGCAAACATTCTCACGCCACCGCGGA
 AATGCTCCGGCACATAGCGCTTGACTACGTCCTGCAGATCAATGTGCTTCAGTCAAACGGAGATCGGA
 AATCCTGAAATCAATGCTGTCCTTCATGTACGCACATCTGGCCTTCTCCATCAAGGGTATGACCTGTC
 AGTGAGCTTGGGCCCTACATGAAAGATCTTGGAGCACAGTTGGATCGACTGGTTGTAGATGCAGCAAAGG
 AGAAAAGAGAGATGGAGCAAAAACACTCTACGATCCAGCAGAAGGATTTCTCCAGTGACGATTCCAAGCT
 AGAGTATAATGTAGACGCTGCAATGGCATTGTGCATGGAAGGGTATCTGTTCAAACGAGCCAGCAACGCC
 TTCAAACCGTGGAAACAGACGCTGGTTCTCCATACAGAACAATCAGTTGGTTTACCAGAAAAAGTTTAAAGG
 ACAGCCCCACTGTGGTGGTGAAGACCTCAGGCTCTGCACAGTGAAGCATTGCGAAGACATCGAGCGGGC
 GTTCTGCTTTGAGGTCGTCTCTCAACAAAAAGTTGTATGCTCCAGGCAGATTCTGAAAAGCTTCGCCAG
 GCCTGGATTAAGGCTGTTTCAGACCAGTATTGCAACTGCTTATAGAGAGAAGGGCGATGAATCAGAGAAAT
 TGGATAAGAAGTCGTCCCATCAACCGGAAGCCTAGATTCTGAAATGAATCAAAGAGAAGTTATTGAA
 AGGAGAAAAGTGCCTGCAGCGTGTGCAGTGTATCCCTGGCAACACCAGCTGCTGTGACTGTGGTCTGGCA
 GACCCACGGTGGGCCAGCATCAACCTGGGCATTACCTTGTGCATTGAGTGTCTGGGATTCATCGGAGCC
 TTGGGGTTCATTTTTCGAAAAGTAAGATCTTTAACTTTAGACACTTGGGAGCCAGAGCTCTTAAAGCTTAT
 GTGTGAATTGGGAAATGATGTTATAAATCGAGTTTATGAAGCTAAACTGGAAAAATGGGTGTAAGAAA
 CCACAGCCAGGACAAAGACAGGAGAAGGAGGCATATATCAGAGCGAAATATGTGGAAAGGAAATTTGTGG
 ATAAGTACTCTGCATTGCTGTCTCCGTCTGAGCAGGAAAAAGGATCATCTCTAAGAGCTGCGAGGACCA
 GAGGCTGAGCCATGCCAGAGCATCTGTCCACACCCAGTCAAAGTAATGACAGCGGGATCCAGCAATGC
 TCTGAGGATGGACGAGAATCTCTACCTCCACGGTGTGAGCCAATAGCTTATATGAGCCTGAAGGAGAAA
 GGCAAGAGTCTTCTGTGTTTCTTGACTCTAAACATCTTAATCCAGGACTTCAGCTTATAGGGCTTCGTA
 CGAAAAAACCTTCCAAGATGGCTGAGGCTTTGGCTCACGGTGCAGATGTGAACTGGGCTAATTAGAT
 GAAAACCAAGCAACCACTCATCCAGGCTGTATTAGGGGGCTCTTTGGTGACATGTGAGTTCCTGTTGC
 AGAATGGTGCTAATGTGAACCAAGAGATGTCCAAGGCCGGGACCAGTGCACCATGCCACCGTCTTAGG
 ACACACAGGGCAGGTGTGCTTATTCCTCAAGCGAGGTGCCAATCAACATGCCACTGACGAGGAGGGGAAG
 GACCTCTGAGTATCGCCGTGGAAGCAGCCAACGCTGACATAGTAACCTGTTACGCTTAGCAAGAATGA
 ATGAGGAAATGCGGGAATCAGAAGGACTTTATGGACAGCCAGGTGATGAACTTACCAGGATATTTTTCG
 TGATTTTTCTCAAATGGCATCCAATAATCCAGAGAACTCAATCGTTTCCAGCAAGATTCACAGAAGTTC

ACGCGTACGCGGCCGCTCGAGCAGAACTCATCTCAGAAGAGGATCTGGCAGCAAATGATATCCTGGATT
 ACAAGGATGACGACGATAAGGTTTAA

Protein Sequence: >MR219017 representing NM_030138
Red=Cloning site Green=Tags(s)

```
MKMTVDFEECLKDSPRFRAALEEVEGDVAEELKLDKLVKLCIAMIDTGKAFVANKQFMNGIRDLAQYS
SNDAVVETSLTKFSDSLQEMINFHTILFDQTRSIKAQLQNFVKEDLRKFKDAKKQFEKVSEKENALVK
NAQVQRNKQHEVEEAANILATRKCFRHIALDYVLQINVLQSKRRSEILKSMLSFMYAHLAFFHQGYDLF
SELGPYMKDLGAQLDRLVVDAAEKREMEQKHSTIQQKDFSSDDSKLEYNVDAANGIVMEGYLFKRASNA
FKTWNRWF SIQNNQLVYQKKFKDSPTVVVEDLRLCTVKHCEDIERRFCFEVVSPTKSCMLQADSEKLRQ
AWIKAVQTSIATAYREKGDSEKLDKKSSPSTGSLDSGNESEKLLKGESALQRVQCIPEGNTSCCCGLA
DPRWASINLGITLCIECSGIHRSLGVHFSKVRSLTLDTWEPELLKLMCELGNDVINRVYEAKLEKMGVKK
PQPQGRQEKEAYIRAKYVERKFDKYSALLSPSEQEKRIISKSCEDQRLSHARASVHTPVKSNDSGIQQC
SEDGRESLPSTVSANSLYEPEGERQESSVFLDSKHLNPGQLYRASYEKNLPKMAEALAHGADVNWANS
ENQATPLIQAVLGGSLVTCFLLQNGANVNQRDVQGRGPLHHATVLGHTGQVCLFLKRGANQHATDEEGK
DPLSIAVEAANADIVTLLRLARMNEEMRESEGLYGQPGDETYQDIFRDFSQMASNPEKLNRFQQDSQKF
```

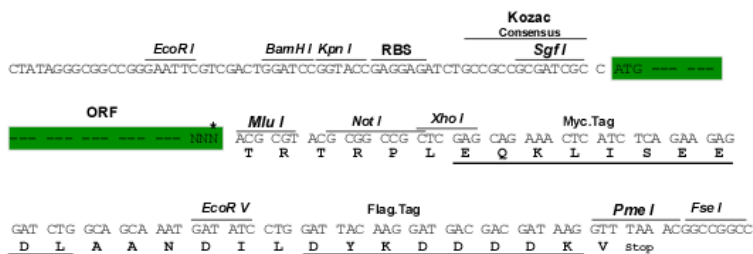
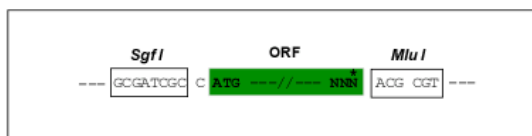
TRTRPLEQKLISEEDLAANDILDYKDDDDKV

Chromatograms: https://cdn.origene.com/chromatograms/mm9091_b09.zip

Restriction Sites: SgfI-MluI

Cloning Scheme:

Cloning sites used for ORF Shuttling:



* The last codon before the Stop codon of the ORF

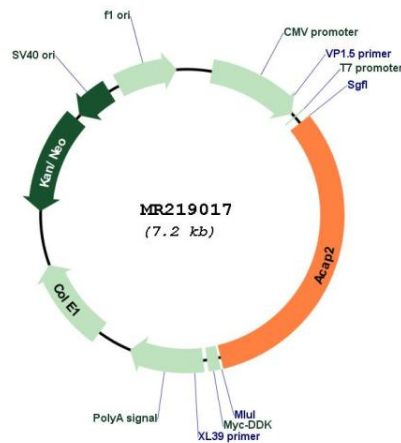
ACCN: NM_030138

ORF Size: 2310 bp

OTI Disclaimer: The molecular sequence of this clone aligns with the gene accession number as a point of reference only. However, individual transcript sequences of the same gene can differ through naturally occurring variations (e.g. polymorphisms), each with its own valid existence. This clone is substantially in agreement with the reference, but a complete review of all prevailing variants is recommended prior to use. [More info](#)

OTI Annotation: This clone was engineered to express the complete ORF with an expression tag. Expression varies depending on the nature of the gene.

Components:	The ORF clone is ion-exchange column purified and shipped in a 2D barcoded Matrix tube containing 10ug of transfection-ready, dried plasmid DNA (reconstitute with 100 ul of water).
Reconstitution Method:	<ol style="list-style-type: none"> 1. Centrifuge at 5,000xg for 5min. 2. Carefully open the tube and add 100ul of sterile water to dissolve the DNA. 3. Close the tube and incubate for 10 minutes at room temperature. 4. Briefly vortex the tube and then do a quick spin (less than 5000xg) to concentrate the liquid at the bottom. 5. Store the suspended plasmid at -20°C. The DNA is stable for at least one year from date of shipping when stored at -20°C.
RefSeq:	<u>NM_030138.2</u> , <u>NP_084414.1</u>
RefSeq Size:	6493 bp
RefSeq ORF:	2313 bp
Locus ID:	78618
UniProt ID:	<u>Q6ZQK5</u>
Cytogenetics:	16 B2
MW:	87.2 kDa
Gene Summary:	GTPase-activating protein (GAP) for ADP ribosylation factor 6 (ARF6).[UniProtKB/Swiss-Prot Function]

Product images:


Circular map for MR219017