

## Product datasheet for **MR219016**

### Ube2q1 (NM\_027315) Mouse Tagged ORF Clone

#### Product data:

Product Type:	Expression Plasmids
Product Name:	Ube2q1 (NM_027315) Mouse Tagged ORF Clone
Tag:	Myc-DDK
Symbol:	Ube2q1
Synonyms:	1110002C01Rik; 2310012M18Rik; AI854014; Gtap; NICE-5; PRO3094; Ube2q
Mammalian Cell Selection:	Neomycin
Vector:	pCMV6-Entry (PS100001)
E. coli Selection:	Kanamycin (25 ug/mL)



[View online »](#)

**ORF Nucleotide Sequence:**

>MR219016 representing NM\_027315  
 Red=Cloning site Blue=ORF Green=Tags(s)

TTTTGTAATACGACTCACTATAGGGCGGCCGGAATTCGTCGACTGGATCCGGTACCGAGGAGATCTGCC  
 GCC**GCGATCGCC**

ATGCAGCAGCCGAGCCGAGGGCAGCAGCAGCCGGGGCCGGGCGAGCAACTGGGGTCCAGGGGGCGG  
 CGCCGGGGCCGGGGCGGCCCGGGAGGGGCCGGGGCCAGGGCCCTGCCTGAGCGGGAGCTGAAGCT  
 GCTCGAGTCCATCTTCCACCGCGCCACAGCGCTTCCGCATTGCCAGCGCCTGCCTGGACGAGCTGAGC  
 TGCGAGTTCCTGCTGGCCGAGCCGAGGGGCGGGGCGGGGCTGCGCCCGGACCCATCTCCCCTCCC  
 GGGGATCGGTGCCGGGGACCCGTCCGCATCCACTGCAACATCACGGAATCATAACCCTGCTGTGCCCC  
 CATCTGGTCGGTGGAGTCCGATGACCCTAACTGGCTGCTGTCTTGAGAGGCTGGTGGACATAAAGAAA  
 GGAATACTTTGCTCTTGACGATCTGAAGAGGATCATCTGTACCTGTGTAACCTACAACCTCCCTC  
 AGCATCCTGATGTGAAATGCTGGATCAGCCCTGCCAGCAGAGCAGTGCACGCAGGAAGAAGTGTCTTC  
 AGAAGATGAAGATGAAGAGATGCCTGAGGATACAGAAGACCTAGATCACTATGAAATGAAAGAGGAAGAG  
 CCAGCCGAGGGCAAGAAGTCTGAAGATGATGGCATCGGAAAAGAGAACCTGGCCATCTAGAGAAAATTA  
 AAAAGAACCAGAGGCAAGATTACTTAAATGGTGCAGTGTCTGGCTCGGTGCAGGCCACTGACCGGCTGAT  
 GAAGGAGCTCAGGGATATATACCGATCACAGAGTTTCAAAGCGGAAACTATGCAGTCGAACTCGTGAAT  
 GACAGTCTCTATGACTGGAATGTCAAACCTCAAAGTTGACCAGGATAGCGCTTTGACAATGATCTTC  
 AGATCTGAAGGAGAAGGAAGGAGCAGACTTATCCTACTTAACTTCTCCTTTAAAGATAACTTCCCCTT  
 TGACCCACCGTTCGTCAAGGTTGTCTCCAGTCTCTGAGGGTATGTTCTGGGTGGAGGTGCCATC  
 TGCATGGAACCTCTACCAAGCAGGGCTGGAGCAGTGCCTACTCCATAGAGTCCGTGATCATGCAGATCA  
 GCGCCACGCTGGTGAAGGGGAAAGCAGGGTGCAGTTTGGAGCCAACAAATCTCAGTATAGCCTGACGAG  
 AGCACAGCAGTCTACAAGTCTTGGTGCAGATCCATGAAAAAACGGCTGGTACACACCCCAAGGAA  
 GATGGC

**ACGCGT**ACGCGGCCGCTCGAGCAGAACTCATCTCAGAAGAGGATCTGGCAGCAATGATATCCTGGATT  
 ACAAGGATGACGACGATAAGGTTTAA

**Protein Sequence:**

>MR219016 representing NM\_027315  
 Red=Cloning site Green=Tags(s)

MQQPQPQQQPQPGPQQQLGVQGAAPGAGGGPGGGPQGLRRELKLLLESIFHRGHERFRIASACLDELS  
 CEFLLAGAGGAGAGAAPGPHLPSRGSVPGDPVRIHCNITESYPVPPPIWSVESDDPNLA AVLRLVDIKK  
 GNTLLLQHLKRIISDLCKLYNLPQHPDVEMLDQPLPAEQCTQEEVSEDEDEEMPEDTEDLDHYEMKEEE  
 PAEGKKS EDDGIGKENLAILEKIKKNQRQDYLN GAVSGSVQATDRLMKELRDIYRSQSFKGGNYAVELVN  
 DSYLDWNVKLLKVDQDSALHNDLQILKEKEGADFILLNFSFKDNFPDFPPFVRVVS PVL SGGYVLGGGAI  
 CMELLTKQGWSSAYSIESVIMQISATLVK GKARVQF GANKSQYSLTRAQQSYKSLVQIHEKNGWYTPPKE  
 DG

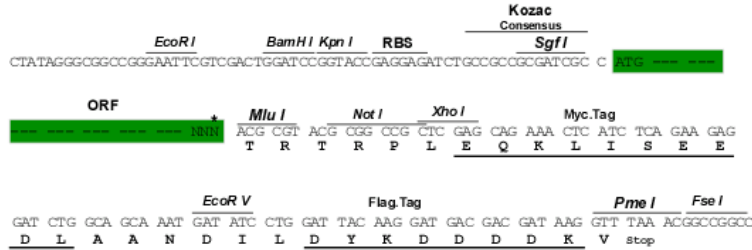
**TR**TRPLEQKLISEEDLAANDILDYKDDDDKV

**Restriction Sites:**

Sgfl-MluI

**Cloning Scheme:**

Cloning sites used for ORF Shuttling:



\* The last codon before the Stop codon of the ORF

**ACCN:** NM\_027315

**ORF Size:** 1266 bp

**OTI Disclaimer:** The molecular sequence of this clone aligns with the gene accession number as a point of reference only. However, individual transcript sequences of the same gene can differ through naturally occurring variations (e.g. polymorphisms), each with its own valid existence. This clone is substantially in agreement with the reference, but a complete review of all prevailing variants is recommended prior to use. [More info](#)
**OTI Annotation:** This clone was engineered to express the complete ORF with an expression tag. Expression varies depending on the nature of the gene.

**Components:** The ORF clone is ion-exchange column purified and shipped in a 2D barcoded Matrix tube containing 10ug of transfection-ready, dried plasmid DNA (reconstitute with 100 ul of water).

**Reconstitution Method:**

1. Centrifuge at 5,000xg for 5min.
2. Carefully open the tube and add 100ul of sterile water to dissolve the DNA.
3. Close the tube and incubate for 10 minutes at room temperature.
4. Briefly vortex the tube and then do a quick spin (less than 5000xg) to concentrate the liquid at the bottom.
5. Store the suspended plasmid at -20°C. The DNA is stable for at least one year from date of shipping when stored at -20°C.

**RefSeq:** [NM\\_027315.4](#), [NP\\_081591.3](#)
**RefSeq Size:** 3081 bp

**RefSeq ORF:** 1269 bp

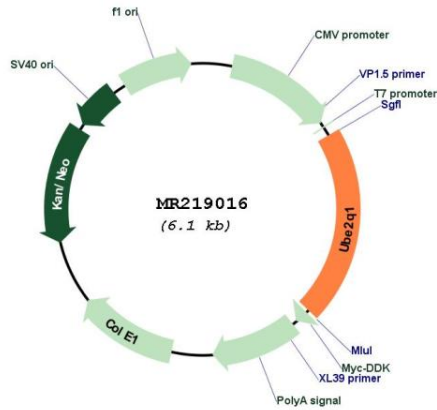
**Locus ID:** 70093

**UniProt ID:** [Q7TSS2](#)
**Cytogenetics:** 3 F1

**MW:** 46.6 kDa

**Gene Summary:** Catalyzes the covalent attachment of ubiquitin to other proteins (By similarity). Involved in female fertility and embryo implantation (PubMed:23108111). May be involved in hormonal homeostasis in females (PubMed:23108111). Involved in regulation of B4GALT1 cell surface expression, B4GALT1-mediated cell adhesion to laminin and embryoid body formation (PubMed:18511602).[UniProtKB/Swiss-Prot Function]

**Product images:**



Circular map for MR219016