

Product datasheet for MR219010

Erc5 (NM_011729) Mouse Tagged ORF Clone

Product data:

Product Type:	Expression Plasmids
Product Name:	Erc5 (NM_011729) Mouse Tagged ORF Clone
Tag:	Myc-DDK
Symbol:	Erc5
Synonyms:	Xpg
Mammalian Cell Selection:	Neomycin
Vector:	pCMV6-Entry (PS100001)
E. coli Selection:	Kanamycin (25 ug/mL)
ORF Nucleotide Sequence:	>MR219010 ORF sequence Red=Cloning site Blue=ORF Green=Tags(s)

TTTTGTAATACGACTCACTATAGGGCGGCCGGGAATTCGTCGACTGGATCCGGTACCGAGGAGATCTGCCGCCGCGATCGCC

ATGGGAGTGCAGGGGCTGTGGAAGCTGCTGGAGTCTCGGGCCACCGGGTCAGCCCGGAGGCGCTGGAGG
GCAAGGTGCTGGCCGTGGATATTAGCATTTGGCTAAACCAAGCACTTAAAGGAGTCCGAGATAGCCATGG
GAATGTGATAGAAAATGCTCATCTTCTCACATTATCCACCGGCTCTGCAAACCTTTGTTTTTTCGTATC
CGCCCTATTTTTGTATTTGATGGTATGCTCCGCTGCTAAAGAAACAGACCTTGGCAAAGAGAAGGCAGA
GGAAGGATTCTGCATCCATTGACTCGAGAAAAACCACCGAGAACTTCTGAAAACCTTTCTGAAGAGACA
GGCTCTGAAAACCTTTTCAGAAGCTCAAGACATGAAGGCCACCCAGTCTCACTCAGGTTCAAAGACAG
GATGACATCTATGTTTTGCCACCTTTACCAGAGGAAGAAAAACACAGTTCAGAAGAGGAAGATGAAAAGC
AATGGCAAGCAAGAATGGATCAAAAACAAGCATTGCGAGGAAGAATTTTTCATAATCCTCAGGCCATAGA
TATCGAGTCTGAGGACTTCAGCAGCCTGCCTCCTGAAGTAAAGCATGAGATCTTGACTGACATGAAAAGAG
TTTACCAAGCGAAGGCGAACACTGTTTGAAGCAATGCCAGAGGAGTCTAATGACTTTTTCACAGTACCAGC
TGAAAGGCTTGTGAAGAAGAACTACCTAAACCAGCACATAGAAAATGTCCAAAAGGAAATGAACCAGCA
GCATTACAGGCAAATCCAGAGGCAATATCAAGATGAGGGAGGCTTTCTGAAGGAAGTGGAGTCCAGGAGA
GTGGTCTCTGAAGACACCTCACATTACATCTTGATAAAAAGTATTCAAGGTAAGAAAGTCATGGATGTGG
ATTCAGAAATCTTCTTCTTCCAGCAACGTACACAGTGTGTCTTCCAACCTGAAGTCATACCCACGA
GAAAGTGAAGCCAGAGAGAGAGCCAGAGCCGCGCCTCCTTCTCCAAGAACTCTACTGGCTATTCAGGCA
GCCATGCTGGGAAGTAGCTCAGAAGATGAGCCAGAGAGTAGAGAGGGAAGGCAGTCTAAGGAGAGGAACT
CAGGGGCCACTGCAGATGCAGGTTCCATCTCACCCGACCCGTGCAGCTATTAGAAAAGCTCTGGATGA
TGATAACGATGAGAAAAGTGTCTGGCAGCAGTGATGATCTAGCAGAGAAAATGCTGCTTGGAAAGTAGGCTG
GAGCAGGAGGAGCATGCTGATGAAACGGCAGAAAAGAGGTGGAGGCGTGCCATTTGACACAGCGCCTCTTA
CACCCAGTGTGACTGAGGTAAGGAGTGTGTAACCAAGTGGCAGCAGTGCAAACGAGCAGACAGACTCAGC
TCATTCATTTACTACCGGAGTACCGATGTGATACTCCAAAAGAAACAGTGTCTCTTGCTCGTGTGTG



[View online >](#)

AAAGAAGCATCTCAGATAAGCAGTGAATGTGAGGTGGAGGGTAGGCCAGCTGCCCTCTCACCAGCATTCA
TAGGAACTCCAAGCAGTCATGTCTCTGGAGTCCTCAGTGAAAGGGAACCCACCCTGGCACCTCCAACGAC
AAGAACACATTCTGATCAGGGGTTAGACATACACCCTGAAGATCCTGAGCTACAAAACGGACTCTACCCA
CCCAGAGCAAGTGAATTCCTCTCGCCTTTCAAGTGACGATGAAACAGAAGGTGGGCAAAAACCTGCTC
CCAAAGCATGTAGTACAGTTCATGTCCCTGCAGAGGCAATGAGTAACTTAGAAAAATGCGTTGCCTTCTAA
TGCTGAAGAACGTGGAGATTTCCAGGAAACCATCCAGCTACGGGAGGTGCCTGAGGCTGCTGCCAGGGAG
CTGATTTTCAGCTCCAAGCCCATGGGACCAATGGAGATGGAGTCTGAAGAAAGCGAGTCTGATGGAAGTT
TCATTGAGGTGCAGAGTGTGGTCAGCAATAGTGAACCTCAAACAGAGTCATCTGAGGCTTCTACACATCT
CTCTGAAAAAGATGCAGAGGAACCAAGAGAAAATCTGGAGGAAGGAACCTCCAGGGACACAGAGTGCCTC
CTACAGGACAGCTCTGACATTGAGGCAATGGAAGGACACAGAGAAGCTGACATAGATGCTGAGGACATGC
CCAACGAATGGCAAGATATTAATTTGGAGGAACTGGATGCCCTGGAAAAGTAACTCTTAGCAGAACAGAA
TTCAGTGAAGCGCAAAAACAGCAGCAAGATCGGATTGCTGCCTCTGTAACAGGCCAGATGTTTCTGGAA
AGCCAGGAACTCTGCGCTGTTGGCGTTCCTACATCCAGGCTCCCATGGAGGCAGAGGCACAGTGTG
CCATGTTGGACCTCACTGACCAGACTTCTGGAACGATTACTGACGATAGTGATATCTGGCTGTTTGGGGC
CCGGCATGTCTATAAGAAATTTTTTAACAAAAACAAGTTGTAGAGTACTATCAATATGTGGACTTTTAC
AGTCAACTAGGACTGGACCGTAACAAGCTAATCAACTGGCCTATCTACTGGGCAGTGACTATACCGAAG
GGATACCAACTGTAGGCTGTGTAAACAGCCATGGAGATTCTCAATGAATTCCTGGACGAGGCCTGGACCC
ACTCCTAAAATTCAGAGTGGTGGCACGAAGCTCAAAATAACAAGAAGTTGCAGAAAAATCCCTATGAC
ACCAAAGTGAAAAAAAATACGGAAGTTGCAGCTGACACCTGGTTTCCCCAACCCGGCAGTTGCAGATG
CTTACCTCAGGCCTGTGGTGGATGACTCCAGGGGATCGTTCCTGTGGGGCAAGCCTGATGTGGACAAGAT
TAGAGAATTTTGTAGAGGTATTTTGGCTGGAACAGGATGAAGACCGATGAATCCCTGTATCCAGTACTA
AAGCACCTGAATGCCATCAGACCCAGCTCCGGATTGATTCCTTTTTTAGACTAGCTCAGCAGGAAAAAC
AAGATGCCAAACTCATAAAGAGTCATAGGCTAAGCAGAGCAGTGACATGTATGCTGAGGAAAGAACGGGA
AGAGAAAAGCTCCTGAGCTGACAAAAGTACTGAGGCCCTGGATGATGCAAAGGAAAAACCCAGAAAAGA
GAGCTACCATATAAAAAAGAGACTTCAGTTCAAAAAGAAGGAGGCCTTCAGGCAATGGTGGTTTCTAG
GGGACCCCTACTGCTCAGAATCACCCCAGGAATCTTCTGTGAGGATGGAGAAGGTTTCTGTGTATGAG
TGCACGACAGAGAAGTGCAGCTGAGTCGTAAAAATCGGCTGCTCAGATGTGCCTGACTTGTGAGAGAC
TCTCCTCATGGGAGGCAAGGCTGTGTCCACTAGTAGCTCCAGTGAGGATGGTGAGGACAAAGCCAAGA
CTGTCTAGTGACTGCTAGACCTGTATTTGGGAAGAAAAACTGAACTAAAGAGTATGAAGAGAAGGAA
AAAGAAAACC

ACGCGTACGCGGCGCTCGAGCAGAACTCATCTCAGAAGAGGATCTGGCAGCAAATGATATCCTGGATT
ACAAGGATGACGACGATAAGGTTTAA

Protein Sequence:

>MR219010 protein sequence
 Red=Cloning site Green=Tags(s)

MGVQGLWKLLECSGHRVSPEALEGKVLAVDISIWLNQALKGVRDSHGNIENAHLLTLFHRLCKLFFRI
 RPIFVFDGDAPLLKKQTLAKRRQRKDSASIDSRKTTTEKLLKTLKROALKTAFRRSRHEAPPSLTQVQRQ
 DDIYVLPPLPEEEKHSSEEEDEKQWQARMQKQALQEEFFHNPQAIDIESEDFSSLPPEVKHEILTDMKE
 FTKRRTTLFEAMPEESNDFSQYQLKGLLKKNYLNQHIENVQKEMNQHSGQIQRQYQDEGGFLKEVESRR
 VVSEDTSHYILIKGIQGGKVMVDVSESLPSSNVHSVSSNLKSSPHEKVKPEREPEAAPPSPRTLLAIQA
 AMLGSSSEDEPESSREGRQSKERNNGATADAGSISPRTRAAIQKALDDDNDKVS GSSDDLAEKMLLGSRL
 EQEEHADETAERGGVFPDAPLTPSVTEVKECVTSGSSANEQTD SAHSFTTASHRC DTPKETVSLARAV
 KEASQISSECEVEGRPAALSPAFIGTPSSHVSGVLSEREPTLAPPTTRTHSDQGLDIHPDEPELQNGLYP
 PESKCNSSRLSSDDETEGGQNPAPKACSTVHVPAEAMSNLENALPSNAEERGDFQETIQREVPEAAARE
 LISAPKPMGPMEMESEESESDGSFIEVQSVVSNSELQTESSEASTHLSEKDAEPPREILEEGTSRDTECL
 LQDSSDIEAMEGHREADIDAEDMPNEWQDINLEELDALESNLLAEQNSLKAQKQQDRI AASVTGMFLE
 SQELLRFLFGVPYIQAPMEAEAQCAMLDLTDQTSGTITDSDIWLFGARHVYKNFFNKNK FVEYYQYVDFY
 SQLGLDRNKLINLAYLLGSDYTEGIPTVGCVTAMEILNEFPGRGLDPLLKFSEWWHEAQNNKVAENPYD
 TKVKKLRLKQLTPGFNPVADAYLRPVVDSRGSFLWGKPDVDKIREFCQRYFGWNRMKTDESLYPVL
 KHLNAHQTLRIDSFRLAQQEAKL I KSHRLSRAVTCMLRKEREKAPELTKVTEALDDAKGKTQKR
 ELPYKETSVPKRRRPSGNGGFLGDPYCESPQESSCEDGEGSSVMSARQRSAAESSKIGCSDVDPDLVRD
 SPHGRQGCVSTSSSEDEGEDKAKTVLVTARPVFGKKLKLKSMKRRKKKT

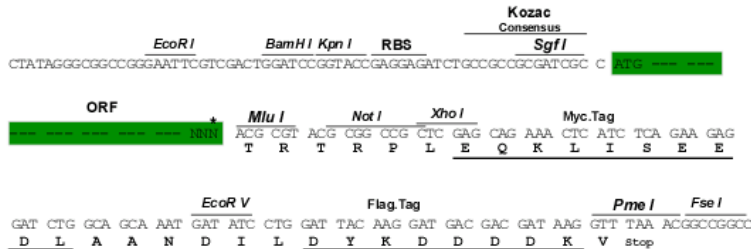
TRTRPLEQKLISEEDLAANDILDYKDDDDKV

Restriction Sites:

Sgfl-MluI

Cloning Scheme:

Cloning sites used for ORF Shuttling:



* The last codon before the Stop codon of the ORF

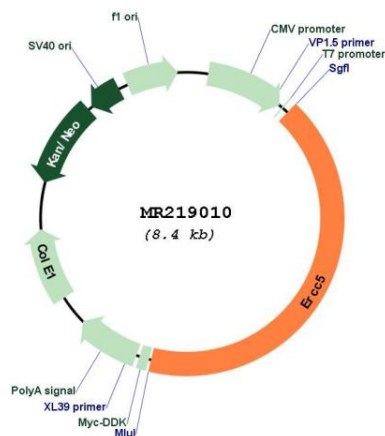
ACCN:

NM_011729

ORF Size:

3513 bp

OTI Disclaimer:	The molecular sequence of this clone aligns with the gene accession number as a point of reference only. However, individual transcript sequences of the same gene can differ through naturally occurring variations (e.g. polymorphisms), each with its own valid existence. This clone is substantially in agreement with the reference, but a complete review of all prevailing variants is recommended prior to use. More info
OTI Annotation:	This clone was engineered to express the complete ORF with an expression tag. Expression varies depending on the nature of the gene.
Components:	The ORF clone is ion-exchange column purified and shipped in a 2D barcoded Matrix tube containing 10ug of transfection-ready, dried plasmid DNA (reconstitute with 100 ul of water).
Reconstitution Method:	<ol style="list-style-type: none"> 1. Centrifuge at 5,000xg for 5min. 2. Carefully open the tube and add 100ul of sterile water to dissolve the DNA. 3. Close the tube and incubate for 10 minutes at room temperature. 4. Briefly vortex the tube and then do a quick spin (less than 5000xg) to concentrate the liquid at the bottom. 5. Store the suspended plasmid at -20°C. The DNA is stable for at least one year from date of shipping when stored at -20°C.
RefSeq Size:	4010 bp
RefSeq ORF:	3513 bp
Locus ID:	22592
Cytogenetics:	1 23.55 cM
MW:	130.9 kDa

Product images:


Circular map for MR219010