

Product datasheet for **MR218963**

Arhgap22 (NM_153800) Mouse Tagged ORF Clone

Product data:

Product Type:	Expression Plasmids
Product Name:	Arhgap22 (NM_153800) Mouse Tagged ORF Clone
Tag:	Myc-DDK
Symbol:	Arhgap22
Synonyms:	B230341L19Rik; p68RacGAP; RHOGAP2
Mammalian Cell Selection:	Neomycin
Vector:	pCMV6-Entry (PS100001)
E. coli Selection:	Kanamycin (25 ug/mL)



[View online »](#)

ORF Nucleotide Sequence:

>MR218963 representing NM_153800
 Red=Cloning site Blue=ORF Green=Tags(s)

TTTTGTAATACGACTCACTATAGGGCGGCCGGAATTCGTCGACTGGATCCGGTACCGAGGAGATCTGCC
 GCC**CGCATCGCC**

ATGCTGCCGACGGCTTCCAGCAAAGAAGAACCTTCGCTGCCAGATACTCACTCGCTCGAAGAGCCTGG
 TGATGGGAGAACAGAGCCGGAGCCAGGGAGGCCCTGGTCCCCACAAGCTGGGCCCTGTACTCAAGGC
 CGGCTGGCTGAGGAAGCAGAGGAGTATCATGAAGAACTGGCAGCAGCGATGGTTTGTCTACGAGGGGAT
 CAGCTCTTCTACTACAAAGACAAAGATGAAAGCAAGCCCCAGGGATTTATTTCTCTACAAGGGACACAAG
 TGACCGAACTTCTCCAGACCCTGAGGACCCAGGAAAGCACCTGTTTGAGATTACGCCAGGTGGTCCAC
 AGAGCGGGAGAAGGTGCCAGCCAACCCGGAGGCGCTCCTGCTCATGGCCAGCTCCAGCGGGATATGGAG
 GACTGGGTGCAGGCCATCCGCCGTGTCTTGGCCCCGCTGGGCAGAGGGATCTTTGGCCAGCGGCTAG
 AGGACACAGTGCACCATGAGCGGAAGTTTGGTCCCCGGCTGGCACCTCTGCTGGTGGAGCAGTGTGTGGA
 CTTTCATCCGGGAGCGAGGACTCAGTGAAGAGGGCCTCTCCGGATGCCTGGCCAGGCCAACCTGGTGGG
 GACCTGCAGGATTCCTTCGACTGTGGGGAGAAGCCGCTGTTTGACAGCACACAGACGTGCACACAGTGG
 CCTCCCTGCTGAAGCTCTACCTTCGGGAGCTCCAGAGCCCGTCATCCCTTTTCGCCAGGTATGAGGACTT
 CCTCAGCTGCGCCAGCTGCTCACCAAGGACGAGGGGGAGGGGACTGTAGAGTTGGCTAAACAAGTGAGC
 AACCTTCTCAGGCCAACTACAACCTGCTCAGATACATCTGCAAGTTTCTGGATGAAGTGACAGGCCACT
 CAGATGTCAATAAGATGAGTGTCCAGAACTTGGCAACTGTCTTTGGTCTAACATTTCTCGGCCACAGAT
 AGAGGATCCAGTAACCATCATGGAAGGCACGTCTCTGGTTCAGCATCTGATGACTGTCTCATCCGCAAA
 CATGGACAGCTCTTTGCTGCAACCTCCCTTGAAGAACCTGCTTACCACATGGCACAGTAGAGTGGGGCT
 CTGAAGAGGTCACCAGGGATCACCGGGGTGAGCCTGGCAGCCCTGGCTTGGCCACACATAGGACTTCATC
 TCTGGATGGGCCAGCTGCAGCAGTGTCTAGAACTTCGCCCGCCGCTTGGCAGCCAACTGGCCCCC
 GCAGCCACCAGCCCTGGGAAGAAGATGCACACTTTCCTGTCTGGAAGTCTTCTTTTCGGCAGCAGGGAT
 CCCGGTCAGAGAGCCCCAAAGGGGTCAACTCATCTTAGAGGTACCCATCATCTCCTCTGGTGGGAACTG
 GCTCATAAACGGGCTATCGTCTCTTCGCAGCCACCGTCGGGCCTCATCGGGGACCGCTTAAAGATACA
 GGCTCGGCACAGAGACTCTCCACCTATGACAATGTGCCGCATCTAGCCAATTTCTAGCACTGCCAGCG
 TGGCCAGCAGTCATGGTCTGTAGCCTCGTCTCCCGAGAGGCCCTGTGCAGCAGCTGCACAGCCTGCCG
 GGCCAGCAACTCTCTGCCTGCAGCTCCTTACACACCGAGTGGGCTCTCGAGCCCTCTCCTCTCCCAGC
 AGCAGTGAGGGCCACCAGTCCCCGACCTGGGCCACAGCCTGGATGAGCCATGTGTGGGCAGTGGCAGCA
 GTGAGCCAATGACCCAGGCAGCCCCACACAGGCCATGTTTCGCCGCTGCCGGGCTCTCCAGGGCCAGGT
 GGCCGAGCTCAGGGCAGAGTTGTGTGTCAGCAGAGGACTGAGTACAAGAGGAGCCTGAAAAGCATCGAGGAG
 GGCAGTGTGACCTGCGGAAGCAGATGTCTCGGTTGGAAGAGGAGCTGGACCAGGAGAGGAAGAAGTATG
 CCATGTCTGGAGATCAAGCTCCGGAACCTCGGAGCGAGCCCCGGGAGGATGCGGAGCGCAGGAACCAGCTGT
 GCAGAGGGAGATGGAGGAGTTCTTCTCCACCCTGGGGAGCTTGACTACAGGGACCAAGGGGTCCAGAGCC
 CCGGAG

ACGCGTACGCGGCCGCTCGAGCAGAACTCATCTCAGAAGAGGATCTGGCAGCAAATGATATCCTGGATT
 ACAAGGATGACGACGATAAGGTTTAA

Protein Sequence: >MR218963 representing NM_153800
Red=Cloning site Green=Tags(s)

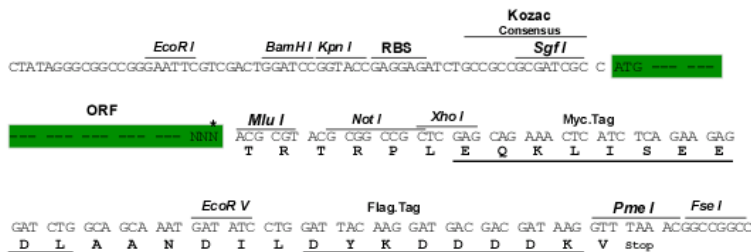
```
MLPTASSKRRTFAARYFTRSKSLVMGEQSRSPGRPLVPHKLGVLKAGWLRKQRSIMKNWQQRWVLRGD
QLFYYKDKDESKPQGFISLQGTQVTELLPDPEDPGKHLFEITPGGATEREKVPANPEALLMASSQRDME
DWVQAIRRVIWAPLGRGIFGQRLDVTVHHERKFGPRLAPLLVEQCVDFIRERGLSEEGLFRMPGQANLVR
DLQDSFDCGEKPLFDSTTDVHTVASLLKLYLRELPEPVIPIFARYEDFLSQAQLLTKDEGEGTVLAKQVS
NLPQANYNLLRYICKFLDEVQAHSDVNKMSVQNLATVFGPNILRPQIEDPVTIMEGTSLVQHLMTVLIRK
HGQLFAATSLEEPASPHGTVEWGSEEVTRDHRGEPGSPGLPTHRTSSLDGPAAAVLSRTSPRLGSQTGP
AATSPGKMHMTLPVWKSSFRQQGSRSESPKGVNSSLEVP IISGGNWLINGLSSLRSHRRASSGDRDKDT
GSAQRLSTYDNVPPSSQFSSTASVASTSWSVASSSREASVSSCTACRASNSACSSLHTEWALEPSPLPS
SSEGHQSPDLGHSLDEPCVSGSGSEPNDPGSPTQAHVRRCRALQGQVAELRAELCQQRTEYKRSLKSEIEE
GSADLRKQMSRLEEELDQERKKYAMLEIKLRNSERAREDAERRNQLLQREMEEFSTLGLSTTGTKGSRA
PE
```

TRTRPLEQKLISEEDLAANDILDYKDDDDKV

Restriction Sites: SgfI-MluI

Cloning Scheme:

Cloning sites used for ORF Shuttling:



ACCN: NM_153800

ORF Size: 2106 bp

OTI Disclaimer: The molecular sequence of this clone aligns with the gene accession number as a point of reference only. However, individual transcript sequences of the same gene can differ through naturally occurring variations (e.g. polymorphisms), each with its own valid existence. This clone is substantially in agreement with the reference, but a complete review of all prevailing variants is recommended prior to use. [More info](#)

OTI Annotation: This clone was engineered to express the complete ORF with an expression tag. Expression varies depending on the nature of the gene.

Components: The ORF clone is ion-exchange column purified and shipped in a 2D barcoded Matrix tube containing 10ug of transfection-ready, dried plasmid DNA (reconstitute with 100 ul of water).

Reconstitution Method:

1. Centrifuge at 5,000xg for 5min.
2. Carefully open the tube and add 100ul of sterile water to dissolve the DNA.
3. Close the tube and incubate for 10 minutes at room temperature.
4. Briefly vortex the tube and then do a quick spin (less than 5000xg) to concentrate the liquid at the bottom.
5. Store the suspended plasmid at -20°C. The DNA is stable for at least one year from date of shipping when stored at -20°C.

RefSeq: [NM_153800.4](#), [NP_722495.3](#)

RefSeq Size: 2598 bp

RefSeq ORF: 2109 bp

Locus ID: 239027

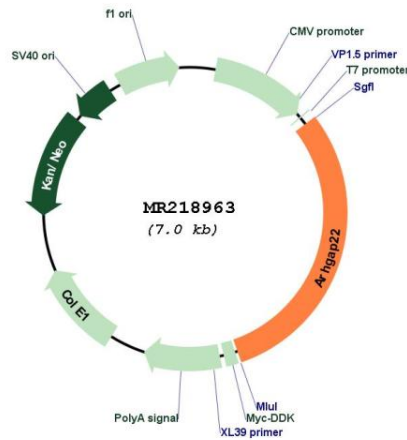
UniProt ID: [Q8BL80](#)

Cytogenetics: 14 B

MW: 78.2 kDa

Gene Summary: Rho GTPase-activating protein involved in the signal transduction pathway that regulates endothelial cell capillary tube formation during angiogenesis. Acts as a GTPase activator for the RAC1 by converting it to an inactive GDP-bound state. Inhibits RAC1-dependent lamellipodia formation. May also play a role in transcription regulation via its interaction with VEZF1, by regulating activity of the endothelin-1 (EDN1) promoter.[UniProtKB/Swiss-Prot Function]

Product images:



Circular map for MR218963