

Product datasheet for MR218912

Prss2 (NM_009430) Mouse Tagged ORF Clone

Product data:

Product Type:	Expression Plasmids
Product Name:	Prss2 (NM_009430) Mouse Tagged ORF Clone
Tag:	Myc-DDK
Symbol:	Prss2
Synonyms:	Ta; Tesp4; Try2; TRY8; TRYP
Mammalian Cell Selection:	Neomycin
Vector:	pCMV6-Entry (PS100001)
E. coli Selection:	Kanamycin (25 ug/mL)
ORF Nucleotide Sequence:	>MR218912 representing NM_009430 Red=Cloning site Blue=ORF Green=Tags(s)

TTTTGTAATACGACTCACTATAGGGCGCCGGGAATTCGTCGACTGGATCCGGTACCGAGGAGATCTGCC
GCC**CGATCGCC**

ATGAGTGCACTTCTGATCCTAGCCCTTGTGGGAGCTGCTGTTGCTTCCCTGTGGATGATGATGACAAGA
TTGTTGGAGGATACACCTGCCGAGAGATTCTGTCCCCTATCAGGTGTCCTAAATGCTGGCTACCACT
CTGTGGAGGTTCCCTCATCAATGACCAGTGGTGGTGTCTGCAGCTCACTGCTACAAATACCGCATCCAA
GTGAGACTGGGAGAGCACAACATCAATGCCTGGAGGGCAATGAGCAGTTTGTGATTCTGCCAAGATCA
TCCGGCACCCCAATTATAATTTCATGGACCCTGGACAATGACATCATGCTGATCAAACCTGGCTTCCCCTGT
GACCCTCAATGCCAGAGTGGCCTCTGTACCTCTGCCAGCTCCTGTGCACCTGCAGGCACTCAGTGCCTC
ATCTCTGGCTGGGCAACACCCTCAGCAATGGTGTGAACAACCCAGACCTGCTCCAGTGTGTTGATGCC
CAGTGTGCCTCAGGCTGACTGTGAGGCCTCTACCCTGGGACATCACCAACAACATGATCTGTGTTGG
CTTCTGGAGGGAGGCAAGATTCTGCCAGGGTACTCTGGTGGCCCTGTGGTCTGCAATGGAGAGCTG
CAGGGCATTGTCTCTGGGGCTATGGCTGTGCCAGCCAGATGCTCCTGGTGTATACCAAGGTCTGCA
ACTACGTGGACTGGATTCAGAACAATGCTGACAAC

ACGCGTACGCGGCCGCTCGAGCAGAACTCATCTCAGAAGAGGATCTGGCAGCAAATGATATCCTGGATT
ACAAGGATGACGACGATAAGGTTTAA



[View online »](#)

Protein Sequence: >MR218912 representing NM_009430
 Red=Cloning site Green=Tags(s)

MSALLILALVGA AVFPVDDDDKIVGGYTCRESSVPYQVSLNAGYHFCGGSLINDQWVVSAAHCYKYRIQ
 VRLGEHNINVLE GNEQFVDSAKIIRHPNYNSWTL DNDIMLIK LASPVTLNARVASVPLPSSCAPAGTQCL
 ISGWGNTLSNGVNNPDL LQCV DAPVLPQADCEASYPGDI TNMIMICVGFLEGGKDCSQGDSGGPVVCNGEL
 QGIVSWGYGCAQPDAPGVYTKVCNYVDWIQNTIADN

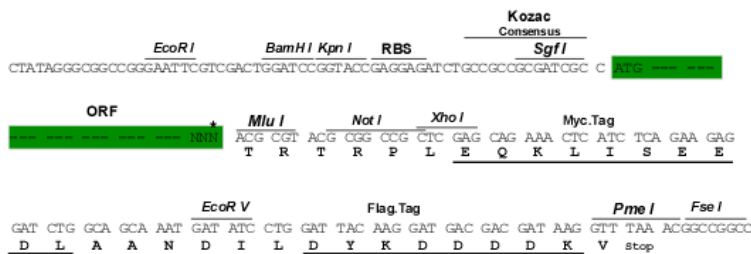
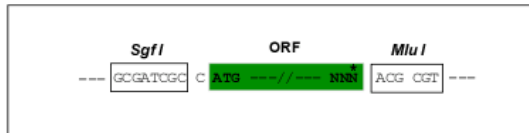
TRTRPLEQKLISEEDLAANDILDYKDDDDKV

Chromatograms: https://cdn.origene.com/chromatograms/mm9076_d06.zip

Restriction Sites: SgfI-MluI

Cloning Scheme:

Cloning sites used for ORF Shuttling:



* The last codon before the Stop codon of the ORF

ACCN: NM_009430

ORF Size: 741 bp

OTI Disclaimer: Due to the inherent nature of this plasmid, standard methods to replicate additional amounts of DNA in E. coli are highly likely to result in mutations and/or rearrangements. Therefore, OriGene does not guarantee the capability to replicate this plasmid DNA. Additional amounts of DNA can be purchased from OriGene with batch-specific, full-sequence verification at a reduced cost. Please contact our customer care team at custsupport@origene.com or by calling 301.340.3188 option 3 for pricing and delivery.

The molecular sequence of this clone aligns with the gene accession number as a point of reference only. However, individual transcript sequences of the same gene can differ through naturally occurring variations (e.g. polymorphisms), each with its own valid existence. This clone is substantially in agreement with the reference, but a complete review of all prevailing variants is recommended prior to use. [More info](#)

OTI Annotation: This clone was engineered to express the complete ORF with an expression tag. Expression varies depending on the nature of the gene.

Components: The ORF clone is ion-exchange column purified and shipped in a 2D barcoded Matrix tube containing 10ug of transfection-ready, dried plasmid DNA (reconstitute with 100 ul of water).

- Reconstitution Method:**
1. Centrifuge at 5,000xg for 5min.
 2. Carefully open the tube and add 100ul of sterile water to dissolve the DNA.
 3. Close the tube and incubate for 10 minutes at room temperature.
 4. Briefly vortex the tube and then do a quick spin (less than 5000xg) to concentrate the liquid at the bottom.
 5. Store the suspended plasmid at -20°C. The DNA is stable for at least one year from date of shipping when stored at -20°C.

RefSeq: [NM_009430.2](#), [NP_033456.1](#)

RefSeq Size: 826 bp

RefSeq ORF: 741 bp

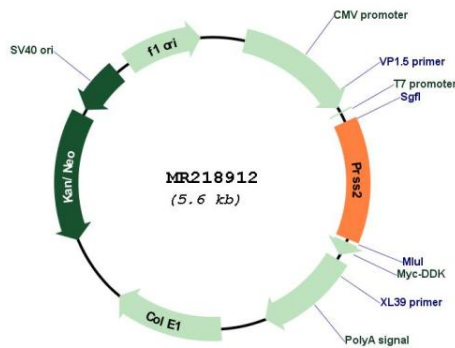
Locus ID: 22072

UniProt ID: [P07146](#)

Cytogenetics: 6 B1

MW: 26.2 kDa

Product images:



Circular map for MR218912