

## Product datasheet for MR218881

### Fam174b (NM\_001162532) Mouse Tagged ORF Clone

#### Product data:

**Product Type:** Expression Plasmids  
**Product Name:** Fam174b (NM\_001162532) Mouse Tagged ORF Clone  
**Tag:** Myc-DDK  
**Symbol:** Fam174b  
**Synonyms:** MGC31276  
**Mammalian Cell Selection:** Neomycin  
**Vector:** pCMV6-Entry (PS100001)  
**E. coli Selection:** Kanamycin (25 ug/mL)  
**ORF Nucleotide Sequence:** >MR218881 representing NM\_001162532  
Red=Cloning site Blue=ORF Green=Tags(s)

TTTTGTAATACGACTCACTATAGGGCGGCCGGAATTCGTCGACTGGATCCGGTACCGAGGAGATCTGCC  
GCC**CGGATCGCC**

ATGAGCGCCCTGCCACCCCAACCGCCGCCACCGCTGCTGCTGCTGCTGCTCGCGCTCCTGGCCGCGCCCG  
CCGCCCTCGCTCGCAGAGCCGAGTCCGCTTCGGCTCCAGCCGAAGCAGAACACCAGCCTCCGCCCG  
TCCGGGAATGCTACCCAGCTGGGATCCGGCATGGCGGGCGGGGAAGCTCCAACAGCAGCGTCGACGCG  
GTGGTGACCCGCATCTCCAGTCTGCTTCGTGACCTGCCTACCCTGAAGGGCAGCGTGATCGTGGCATGTG  
CCTTCAGCGCGTGTCTATCGCCTGTCTGCTGCTGCGCGTCTTCAGGTTGGGAAAAGGTTGAAGAAGAC  
TCGCAAGTATGACATCATCACCACCCTGCGGAACGTGTGAAAATGGCCCACTGAATGAGGAGGACGAT  
GAGGATGAAGACTCTACGATTTTGACATCAAATATAGG

**ACGCGT**ACGCGGCCGCTCGAGCAGAACTCATCTCAGAAGAGGATCTGGCAGCAAATGATATCCTGGATT  
ACAAGGATGACGACGATAAGGTTTAA

**Protein Sequence:** >MR218881 representing NM\_001162532  
Red=Cloning site Green=Tags(s)  
MSALPPQPPPLLLLLLLAAPAALARRAESASASQPEAEHQPPPGPNATQLGSGMAGGGSSNSSVDA  
VVTRISSLLRDLPTLKATVIVACAFSALLIACLLLRVRLGKRLKTRKYDIITPAERVEMAPLNEEDD  
EDEDSTVFDIKYR

**TRTRPLEQKLI**SEEDLAANDILDYKDDDDKV

**Chromatograms:** [https://cdn.origene.com/chromatograms/mm9088\\_a02.zip](https://cdn.origene.com/chromatograms/mm9088_a02.zip)



Restriction Sites: SgfI-MluI

Cloning Scheme:



ACCN: NM\_001162532

ORF Size: 459 bp

OTI Disclaimer: The molecular sequence of this clone aligns with the gene accession number as a point of reference only. However, individual transcript sequences of the same gene can differ through naturally occurring variations (e.g. polymorphisms), each with its own valid existence. This clone is substantially in agreement with the reference, but a complete review of all prevailing variants is recommended prior to use. [More info](#)

OTI Annotation: This clone was engineered to express the complete ORF with an expression tag. Expression varies depending on the nature of the gene.

Components: The ORF clone is ion-exchange column purified and shipped in a 2D barcoded Matrix tube containing 10ug of transfection-ready, dried plasmid DNA (reconstitute with 100 ul of water).

Reconstitution Method:

1. Centrifuge at 5,000xg for 5min.
2. Carefully open the tube and add 100ul of sterile water to dissolve the DNA.
3. Close the tube and incubate for 10 minutes at room temperature.
4. Briefly vortex the tube and then do a quick spin (less than 5000xg) to concentrate the liquid at the bottom.
5. Store the suspended plasmid at -20°C. The DNA is stable for at least one year from date of shipping when stored at -20°C.

RefSeq: [NM\\_001162532.1](#), [NP\\_001156004.1](#)

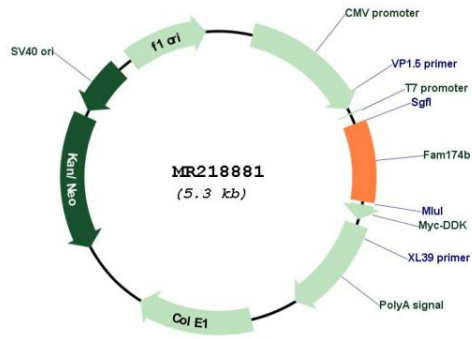
RefSeq Size: 2678 bp

RefSeq ORF: 462 bp

Locus ID: 100038347

UniProt ID: [Q8K064](#)  
 Cytogenetics: 7 D1  
 MW: 16.2 kDa  
 Gene Summary: Essential for Golgi structural integrity.[UniProtKB/Swiss-Prot Function]

**Product images:**



Circular map for MR218881