

Product datasheet for **MR218877**

Scfd2 (NM_001114660) Mouse Tagged ORF Clone

Product data:

Product Type:	Expression Plasmids
Product Name:	Scfd2 (NM_001114660) Mouse Tagged ORF Clone
Tag:	Myc-DDK
Symbol:	Scfd2
Synonyms:	E430013M20Rik; STXBP1L1
Mammalian Cell Selection:	Neomycin
Vector:	pCMV6-Entry (PS100001)
E. coli Selection:	Kanamycin (25 ug/mL)



[View online »](#)

ORF Nucleotide
Sequence:

>MR218877 representing NM_001114660
Red=Cloning site Blue=ORF Green=Tags(s)

TTTTGTAATACGACTCACTATAGGGCGGCCGGAATTCGTCGACTGGATCCGGTACCGAGGAGATCTGCC
GCC**CGGATCGCC**

ATGAGCGCCGCGGCATACTGGCCTTTGCCAGCAAGGCTGGGAGCAGGTGCTGGCCAAAGTGAAGTGGT
CCGTGGTCTACCTGGACGCTGCCTGCGCCGAGAGCCTGCACTGGAGCTGCGGATCCAGCCGGCTTCTGGA
GGCGGTGAAGGGTCTGCGTGTACCTGCGGGAATTTGAACCCAGGCCATTGGCGGGGAGCCAAGCAG
CCCCGGCGGTTTTCTGTTTTGAGCAGCCCGCTGAAAGGCCGATCGTAGACACTCTACAGAGTATCATT
GCCGCAGTCACTTTCAGCACTGTGTGGTGGTACAGCCGTGAGCCACGCAGTCCACCTCACTGCTAACCA
CGTACCGGCCGCTGCAGCGGCCGAGCTCGAGGGGCAGCAGCCGGTGTTCGAACAGCTGGAGGAGAAGCTC
TGTGAGTGGATGGCAACGAGAATAACGCGCCGAGGTGCTCCACGTCCCCTGTTTCTCGCCCCTGTTG
CCTCCCATCTCGTTTTACTCCAGCCTTGTACCTCTTCCCCTGCTACCTCAGGATGCTCCACGCTCT
TAACAGTCCAGACCCGACAAGAGGAGGCTGAGCAGCTTGGGTGAGGTGGATGCCACTGCCCTAACCCCA
GAGCTGCTGCTGTACATCAGATGCCTCGTGTGAGCCCTCAGTTCTCTGTGTGAACATCTAGGGGTACGAG
AGGAGTGTTCGCCGTGGGTCCCCTCAGTCGGGTATCGCTACAGATCTGGCAAATTATGCCCCCGCCAA
GAACAGGAAAAAGACTGCTACAGGCAGGGCTTCTGTGGTCTTTGTGGATAGAACTCTGGATCTCACAGGA
GCGGTTGGACACCACGGAGACAACCTTAGTAGAGAAGATCATGTCAGTGTCTCCACAGCTTCCAGGCCACA
CCCACGACGTGATGGTCAACATGGCCGAGCTCACTGCTGTCCAGGCTGTGGAGGAAAACAGAACGTGAT
TGCACCAGGCTGCCTTCCCCATCCAATGAGGCCCTCAGCCAAGGCCCTGTGGGAAGCCTTACTGAACTCC
AAGCACAAGAGGCAGTATGGAAGTTCGAGACATCTAGTGAAGCAGCCAGCAGAGAGAACCTGCCCA
TCAAGATGAGTATGGGAAGAGTCACTCCAGGCCAGCTCATGTCCATATTTCAACTCTTCAAGAACAACCT
CAGAGCTCTTAGAAATCACTGTGGCTTCTACAGCTTGGGATGGCCACAGTTCAAACCTCTGAAGCACCCA
CAGACTGCCAAGTGGATAAATTCTGGCATTGAAAGGCTCCTTCTACAGAGCCTTGGGATTCAACCA
TGGCTGGTGTGCTAAATCAGCTGCTGCCAATGATTAAGTCTCAAGCCAGAGAACCAGTGACGACCTCAA
CCCTGAGGAACTGCTGATCCTGCTCATATACATTTACTCTGTCCCTGGAGACGTCACGCTGGACAGAGAC
CTGGGAGACGTGGAAGAAAAGGTGAAGAAAGCATTGGCCCATGCTCTCTGAGGAGTCTGAGCTGTCCC
CTTTGCTGCAGAAAATCACAGGCTGTGACTCTGCAGTTGACCTGACGTTGCCAAATCCCAAATTTGCTGT
GAATGATGTCTTCATGGCTCTCCGGGAGATCGCTGGAGCTAGGAATCTCATGAGACAGTTTAAAGTCTGTG
TATGTTCTGGAATAACACCCATCAGGCATCCTATAAGCCGCTGTTGAAGCAGGTTGTGGAGGAAATAT
TTAATCCTGAGAAGTCAATCCTATTGACATTGAACATATGTCCTCAGGCCTCACTGATCTCCTGAAAAC
TGGATTACAGATGTTTATGAAGGTGAGCCGGCCCATCCAGTGACCATCCCCTCTTGATCCTCTTTGTG
GTGGGCGCGCTCACAGTCGCTGAAGCAAAATGGTCAAAGACCTTGTAGCATCTCTGAAGCCAGGAACCC
AGGTGATGGTGTGCTCCACAAGACTCCTGAAGCCGCTTAACATTTCCCGAGCTGCTCTTGAACCTGACCC
GCTACACCCAGACCTCGGCTTC

ACGCGTACGCGGCCGCTCGAGCAGAACTCATCTCAGAAGAGGATCTGGCAGCAATGATATCCTGGATT
ACAAGGATGACGACGATAAGGTTTAA

Protein Sequence: >MR218877 representing NM_001114660
 Red=Cloning site Green=Tags(s)

MSAAGILAF AQQGW EQLAKVKWSVVYLDAACAESLHWSGSSRLLEAVKGPACHLREFEPQAIGGGAKQ
 PRAVFVLS SPLKGRIVDTLQSIICRSHFQHCVVVTAVSHAVHLTANHVPAAAAAELEGQQPVFEQLEEKL
 CEWMGNENYTAEVLHVPLFLAPVASHLAFTPAFATLFP LLPQDVHALNSARPKRRLSSLGEVDATALTP
 ELLLYIRCLV SGLSS LCEHLGVREECF AVGPLSRVIATDLANYAPAKNRKKTATGRASVVFVDR TLDL TG
 AVGHGDNLVEKIMSVLPQLPGH THDVMV NMAELTAVQAVEENQNV IAPGCLAPSNEASAKALWEALLNS
 KHKEAVMEVRRHLVEAASRENLP IKMSMGRVTPGQLMSYIQLFKNNLRALRNHCGLLQLGMATVQTLKHP
 QTAKWDFLAFERLLLQSLGDSTMAGVLNQLLPMIKSSSQRTSDDL NPEELLILLIYIYSVPGDVT LDRD
 LGDVEEKVKALAHV LSEESELP LLQKITGCDSAVDL TPKSQI AVNDVFMALREIAGARNLMRQFKSV
 YVPGNNT HQASYKPL LKQVVEE I FNPEKSDPIDIEHMSSGLTDLLKTGFSMFMKVSRPHPSDHPLLILFV
 VGGVTVAEAKMVKDLVASL KPGTQVMV LSTRLLKPLNIPELLFATDRLHPDLGF

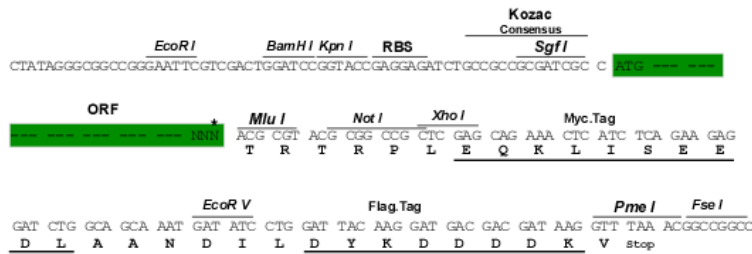
TRTRPLEQKLI SEEDLAANDILDYKDDDDKV

Chromatograms: https://cdn.origene.com/chromatograms/ja2791_c01.zip

Restriction Sites: Sgfl-MluI

Cloning Scheme:

Cloning sites used for ORF Shuttling:



* The last codon before the Stop codon of the ORF

ACCN: NM_001114660

ORF Size: 2055 bp

OTI Disclaimer: Due to the inherent nature of this plasmid, standard methods to replicate additional amounts of DNA in E. coli are highly likely to result in mutations and/or rearrangements. Therefore, OriGene does not guarantee the capability to replicate this plasmid DNA. Additional amounts of DNA can be purchased from OriGene with batch-specific, full-sequence verification at a reduced cost. Please contact our customer care team at custsupport@origene.com or by calling 301.340.3188 option 3 for pricing and delivery.

The molecular sequence of this clone aligns with the gene accession number as a point of reference only. However, individual transcript sequences of the same gene can differ through naturally occurring variations (e.g. polymorphisms), each with its own valid existence. This clone is substantially in agreement with the reference, but a complete review of all prevailing variants is recommended prior to use. [More info](#)

OTI Annotation: This clone was engineered to express the complete ORF with an expression tag. Expression varies depending on the nature of the gene.

Components: The ORF clone is ion-exchange column purified and shipped in a 2D barcoded Matrix tube containing 10ug of transfection-ready, dried plasmid DNA (reconstitute with 100 ul of water).

Reconstitution Method:

1. Centrifuge at 5,000xg for 5min.
2. Carefully open the tube and add 100ul of sterile water to dissolve the DNA.
3. Close the tube and incubate for 10 minutes at room temperature.
4. Briefly vortex the tube and then do a quick spin (less than 5000xg) to concentrate the liquid at the bottom.
5. Store the suspended plasmid at -20°C. The DNA is stable for at least one year from date of shipping when stored at -20°C.

RefSeq: [NM_001114660.2](#), [NP_001108132.1](#)

RefSeq Size: 3680 bp

RefSeq ORF: 2055 bp

Locus ID: 212986

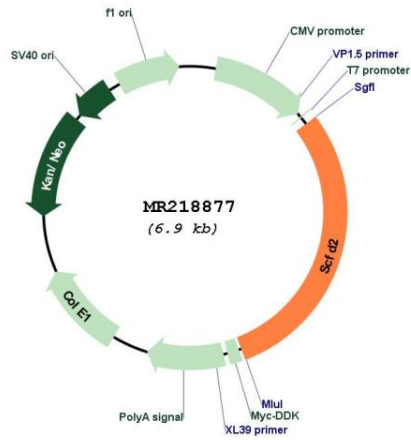
UniProt ID: [Q8BTY8](#)

Cytogenetics: 5 C3.3

MW: 74.8 kDa

Gene Summary: May be involved in protein transport.[UniProtKB/Swiss-Prot Function]

Product images:



Circular map for MR218877