

Product datasheet for **MR218845**

Ttc30b (NM_028235) Mouse Tagged ORF Clone

Product data:

Product Type:	Expression Plasmids
Product Name:	Ttc30b (NM_028235) Mouse Tagged ORF Clone
Tag:	Myc-DDK
Symbol:	Ttc30b
Synonyms:	2510042P03Rik; Tcc30b
Mammalian Cell Selection:	Neomycin
Vector:	pCMV6-Entry (PS100001)
E. coli Selection:	Kanamycin (25 ug/mL)



[View online »](#)

ORF Nucleotide
Sequence:

>MR218845 representing NM_028235
Red=Cloning site Blue=ORF Green=Tags(s)

TTTTGTAATACGACTCACTATAGGGCGGCCGGAATTCGTCGACTGGATCCGGTACCGAGGAGATCTGCC
GCCGCGATCGCC

ATGGCAGGGCTGAGCAGCTCACAGATCCCCGACGGTGAGTTCACAGCAGTGGTGTACAGGCTCATCCGCG
ACTCCCCTACTCAGAGGCGGTGACGCTGCTGAGCGCAGAGCTGCAGAGGAGCTCCCGCAGCCGCGCAGG
GCTGTCGCTGCTGGCCTACTGCTACTACCGCTGCAGGAGTTCGAGCTCGCTGCAGAGTGTATGAGCAG
CTGAGCCAGATGCACCCGGAACCGAGCAGTACCGCTGTACCAGGCCAGGCACTGTACAAGGCCTGCC
TGTATCCAGAGGCCACCAGGGTCGCTTCTCTCTGGACAACCCGCTATCAGACTCGAGTCTTCTGCTCT
CCAGGCTGCTATCAAGTACAGTGAAGGTGACCTCCAGGAGCCAGGAGCCTGGTGGAGCAGCTGCTGAGT
GGGGAAGGTGTAGAGGACAGTGGAGGGGAGAGTGATTATGATGGTCAGATCAACCTAGGTTGTCTGCTCT
ACAAGAGGGACACTATGAAGTCGCTGTTCCAAGTCTTAGCGGCCCTGCAGGCTTCTGGCTACCAGCC
TGACCTTCTCAACTGGCTTTGGCCTATTACAGCAGTCGGCAGTACGCGCCTGCTCTGAAGCATATC
GCTGACATCATTGAGCGTGGCATCCGTCAACACCCAGAACTCGGTGTGGGCATGACCACGGAGGGCATTG
ATGTTTCGAGTGTGGCAACACTATAGTCTTACCAGACTGCTCTGGTGAAGCCTTCAACCTCAAGGC
AGCCATAGAGTACCAGCTGAGAACTACGAGGCAGCCAGGAAGCCCTCACTGACATGCCACCCAGAGCA
GAGGAAGAGCTGGACCCCGTAACCTCCACAACCAGGCTCTGATGAACATGGATGCCAAGCCACAGAGG
GCTTTGAAAAGCTCCAGTTTCTGCTCCAGCAGAACCCCTCCCCCAGAGACCTTTGGCAACCTGCTGCT
GCTCTACTGTAATATGAGTATTTGACCTGGCAGCTGATGTCTGGCAGAAAATGCCCACTTGACTTAC
AAGTTCCTCACACCCTATCTCTATGACTTCTTGGATGCCATGATCACTTGCCAGACAGCTCCTGAAGAGG
CTTTCATTAACCTTGATGGGTTGGCTGGCATGCTGACTGAGCAGCTCCGAAAACCTACCATAACAAGTACA
GGATTCGAAGGCATAGTAGAGATGATGAATCTGCCAAAAAGGCTGTGAATGAATATGATGAAACTCTTGAG
AAGTATATTCCTGTACTGATGGCCAGGCAAAAATCTACTGGAACCTTTGAGAATTACCAATGGTGGAGA
AGATCTTCGCAAACTGTGGAATTCTGTAATGACCATGATGTGTGGAAGCTGAATGTGGCCCATGTCTCT
CTTCATGCAGGAGAACAAGTACAAAGAGGCCATTGGTTTCTATGAGCCATTGTCAAGAAGAATTATGAT
AACATCCTGAGTGTGAGTCTATTGTGTTAGCCAACTCTGTGTTTCTATATCATGACAAGTCAAAATG
AGGAAGCTGAGGAGCTCATGAGGAAGATTGAGAAGGAGGAGGAACAACCTCTTATGGTGACCCAGACAA
GAAAATCTACCACCTTTGCATTGTGAATTTGGTATAGGAACTCTGTATTGTGCCAAAGGAAACTATGAC
TTTGGCATCTCTCGGTTATCAAAAGCCTGGAGCCTTACCATAAAAAGCTAGGCACCGATACATGGTATT
ATGCCAAGAGATGTTTCTGTCCTTACTAGAGAACATGTCAAAGCACACAATTATGCTAAGGGACAGTGT
CATTCAAGAATGTGTGAGTTTCTAGAGCACTGTGAACCTTATGGTAGAAACATTCCAGCTGTTATAGAA
CAGCCCTTGGAGGAAGAAAGAATGCACACTGGGAAGAATACAGTCACATATGAATCAAGAAAGTTGAGGG
CTCTGATTTATGAGATAATTGGATGGAATGTG

ACGCGTACGCGGCCGCTCGAGCAGAACTCATCTCAGAAGAGGATCTGGCAGCAATGATATCCTGGATT
ACAAGGATGACGACGATAAGGTTTAA

Protein Sequence: >MR218845 representing NM_028235
Red=Cloning site Green=Tags(s)

```
MAGLSSSQIPDGEFTAVVYRLIRDSRYSEAVQLLSAELQRSSRSRAGLSLLAYCYRRLQEFELAAECYEQ
LSQMHPLEQYRLYQAQALYKACLYPEATRVAFLLDNPAYQTRVLRQAIAIKYSEGDLPGARSLVEQLLS
GEGVEDSGGESDYDQGQINLGCLLYKEGHYEAACSKFLAALQASGYQPDL SYNLALAYSSRQYAPALKHI
ADIIERGIRQHPELGVGMTTEGIDVRSVGNITIVLHQTALVEAFNLKAAIEYQLRNYEAAQEAL TDMPPRA
EEELDPVTLHNQALMMDAKPTEGFELKQFLLLQQNPFPPETFGNLLLLLYCKYEYFDLAADVLAENAHLY
KFLTPYLYDFLDAMITCQTAPEEAFIKLDGLAGMLTEQLRKLTIQVQDSRHSRDES SAKKAVNEYDETLE
KYIPVLMQAQAIYWNFENYPMVEKIFRKSVEFCNDHDVWKLNVAVHVMQENKYKEAIGFYEPVVKKNYD
NILSVSAIVLANL CVSYIMTSQNEEAELMRKIEKEEQQLSYGDPDKKIYHLCIVNLVIGTLYCAKGN YD
FGISRVIKSLEPYHKKLGTD TWYAKRCFLS LLENMSKHTIMLRDSVIQECVQFLEHCELYGRNIPAVIE
QPLEEERMHTGKNTVTTYESRKL RALIYEIIGWNV
```

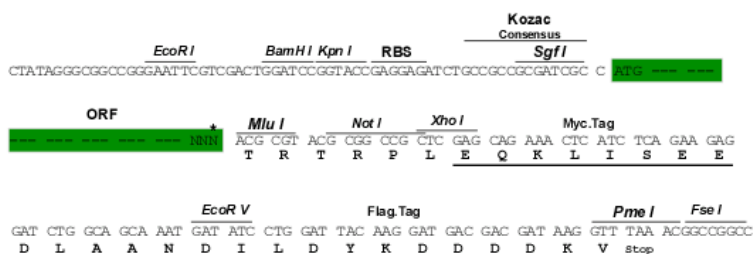
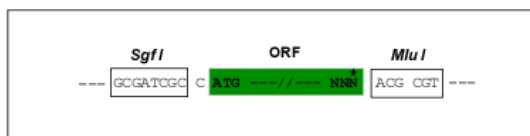
TRTRPLEQKLISEEDLAANDILDYKDDDDKV

Chromatograms: https://cdn.origene.com/chromatograms/mm9079_a03.zip

Restriction Sites: SgfI-MluI

Cloning Scheme:

Cloning sites used for ORF Shuttling:



* The last codon before the Stop codon of the ORF

ACCN: NM_028235

ORF Size: 1992 bp

OTI Disclaimer: The molecular sequence of this clone aligns with the gene accession number as a point of reference only. However, individual transcript sequences of the same gene can differ through naturally occurring variations (e.g. polymorphisms), each with its own valid existence. This clone is substantially in agreement with the reference, but a complete review of all prevailing variants is recommended prior to use. [More info](#)

OTI Annotation: This clone was engineered to express the complete ORF with an expression tag. Expression varies depending on the nature of the gene.

Components: The ORF clone is ion-exchange column purified and shipped in a 2D barcoded Matrix tube containing 10ug of transfection-ready, dried plasmid DNA (reconstitute with 100 ul of water).

Reconstitution Method:

1. Centrifuge at 5,000xg for 5min.
2. Carefully open the tube and add 100ul of sterile water to dissolve the DNA.
3. Close the tube and incubate for 10 minutes at room temperature.
4. Briefly vortex the tube and then do a quick spin (less than 5000xg) to concentrate the liquid at the bottom.
5. Store the suspended plasmid at -20°C. The DNA is stable for at least one year from date of shipping when stored at -20°C.

RefSeq: [NM_028235.1](#), [NP_082511.1](#)

RefSeq Size: 2634 bp

RefSeq ORF: 1995 bp

Locus ID: 72421

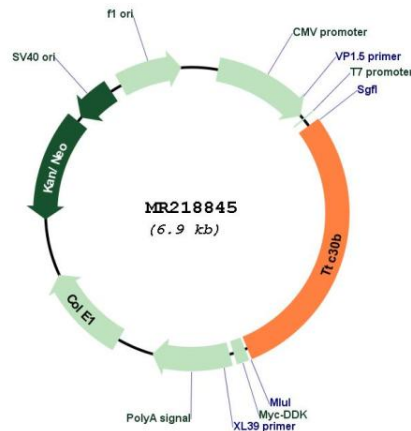
UniProt ID: [Q9CY00](#)

Cytogenetics: 2 C3

MW: 76.1 kDa

Gene Summary: Required for polyglutamylation of axonemal tubulin. Plays a role in anterograde intraflagellar transport (IFT), the process by which cilia precursors are transported from the base of the cilium to the site of their incorporation at the tip.[UniProtKB/Swiss-Prot Function]

Product images:



Circular map for MR218845