

Product datasheet for **MR218833**

Klh17 (NM_026448) Mouse Tagged ORF Clone

Product data:

Product Type:	Expression Plasmids
Product Name:	Klh17 (NM_026448) Mouse Tagged ORF Clone
Tag:	Myc-DDK
Symbol:	Klh17
Synonyms:	2700038B03Rik; D5Ertd363e; SBBI26
Vector:	pCMV6-Entry (PS100001)
E. coli Selection:	Kanamycin (25 ug/mL)
Cell Selection:	Neomycin



[View online »](#)

ORF Nucleotide Sequence:

>MR218833 representing NM_026448
 Red=Cloning site Blue=ORF Green=Tags(s)

TTTTGTAATACGACTCACTATAGGGCGGCCGGAATTCGTCGACTGGATCCGGTACCGAGGAGATCTGCC
 GCC**CGCATCGCC**

ATGCCACCTCCGGCGTGAAAAGAGTAGCAAGAAGAAAAGTGAAGAAGAACTTGGCGCTCGCGAAGAAG
 CCAAGCTGCTGGCGGGTTCATGGCGTCAATGAACAACATGAGGAAACAGAGAACACTGTGTGACGTGAT
 CCTCACTGTCCAGGAAAGAAAGATCCCCGCTCACCAGCTTGTCTGGCTGCAGCCAGTCACTTCTTTAAC
 TTAATGTTCACTAACAATGCTTGAATCTAAGTCCTTTGAAGTAGAACTCAAAGATGCTGAACCTGATA
 TTATTGAACAACGGTGGAAATTTGCTTATACTGCTAGAATTTCTGTGAATAGCAACAATGTTGAGCTTT
 GTTAGATGCAGCAATCAGTACCAGATTGAACCTGTGAAGAAAATGTGTGTTGATTTTTGAAAGAACA
 GTTGATGCTTCAAATTGCTTGGTATAAGTGTGCTTGCAGAGTGTCTGGACTGCTCCTGAAGTAAAGCTA
 CAGCTGATGACTTCAATCATCAGCATTTCACTGAGGTTTACAAAACAGATGAATTCCTGCAGCTTGATGT
 CAAGCGAGTGACACATCTTCTCAGCCAGGACACCCTGACTGTGAGAGCAGAGGACCAGGTTTATGAGCT
 GCCGTGAGGTGGTTGAAATATGATGAGCCTAACCGCCAGCCATTCATGGTTGATATCCTTGTCAAAGTCA
 GTTTTCTCTTATATCGAAGAATTTCTAAGTAAAACAGTACAAGCTGAACCACTTATTCAGATAATCC
 TGAATGCCTTAAATGGTGATAAGTGGAATGAGGTACCATCTGCTGTCTCCTGAGGATCGAGAAGAACTT
 GCAGGTGGCACACGGCTAGAAGAAAGAAACATGATTACCGCATAGCTCTGTTTGGAGGCTCCCAACCAC
 AGTCTGTAGATATTTAAACCAAAGGATTACAGTTGGACAGACATTCGCTGCCCTTTGAAAACGAAAG
 AGATGCAGCATGTGTGTTTGGGACAATGTAGTATACATTTTGGGAGGTTCTCAGCTTTCCCAATAAG
 CGAATGGATTGCTACAATGTTGTAAAGGATAGCTGGTATTCCAACCTGGGCCCTCAACACCTCGAGACA
 GCCTTGCCTGTGCAGCAGAAGGCAAAATTTATACATCTGGAGGTTTCAAGAGTAAAGAACTCGGCCCT
 GTATTTGTTTGAATGCTATGATACAAGGACCGAGAGTTGGCACACGAAGCCAGCATGCTGACTACGGC
 TGCAGCCATGGGATGGTGGAGGCCAATGCCTCATCTATGTTTGTGGTGAAGCTTAGGAAAACATGTTT
 CTGGGAGAGTGCTTAGTTCCTGTGAAGTGTATGATCCTGCCACAGAAACATGGACTGAGCTGTGTTCAAT
 GATTGAGCCAGGAAGATCATGGGCTGGTGTGTTGTAAGGACAAGATATTTGCTGTGCGGTGGTCAGAA
 GGTTTAGGTGGTCTGGACAATGTGAATATTACGATATCAAGTAAATGAATGGAAGATGGTGTACCCGA
 TGCCATGGAGGGGTGTCACGGTGAAGTGTGCAGCAGTTGGCTCTGTCATCTATGCTCCTGGCAGGTTTTCA
 GGGTGTAGGCAGATTGGGCATATCCTTGAGTATAATACTGAAACAGATAAGTGGATCGCCAACCTAAAA
 GTCGGGCTTTCCAGTACAAGTTGTCTAATTTGTGTTGTTGATACTTGTGGAGCAATGAAGAGACCC
 TTGAAACA

ACGCGTACGCGGCCGCTCGAGCAGAAACTCATCTCAGAAGAGGATCTGGCAGCAAATGATATCCTGGATT
 ACAAGGATGACGACGATAAGGTTTAA

Protein Sequence:

>MR218833 representing NM_026448
 Red=Cloning site Green=Tags(s)

MATSGVEKSSKKKTEKLLAAREEAKLLAGFMGMNMRKQRTLCDVILTVQERKIPAHRVVLAASHFFN
 LMF TTNMLESKSFEVELKDAEPDIEQLVEFAYTARISVNSNNVQSLLDANQYQIEPVKMCVDFLKEQ
 VDASNCLGISVLAELDCPELKATADDFIHQHFTEVYKTDDEFLLQDVKRVTHLLSQDTLTVRAEDQVYDA
 AVRWLKYDEPNRQPFMVDILAKVRFPLISKNFLSKTVQAEPLIQDNPECLKMVISGMRYHLLSPEDREEL
 AGGTRPRRKKHRYRIALFGGSQPQSCRYFNPKDYSWTDIRCPFEKRRDAACVFDNVDVYILGGSQLFPIK
 RMDCYNVKDSWYSKLGPPTPRDSLAACAAEGKIYTSGGSEVGNLSALYLFECYDTRTESWHTKPSMLTQR
 CSHGMVEANGLIYVCGGSLGNNVSGRVLSSCEVYDPATEWTWELCSMIEPRKNHGLVFKDKIFAVGGQN
 GLGGLDNVEYYDIKLNWKMVSPMPWRGVTVKCAAVGSVIYVLAGFQGVGRLGHILEYNTETDKWIANSK
 VRAFPVTSCLICVVDTCGANEETLET

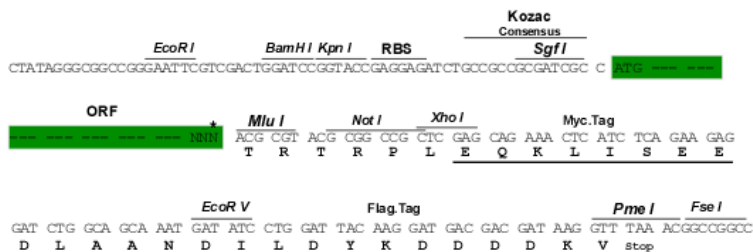
TRTRPLEQKLISEEDLAANDILDYKDDDDKV

Restriction Sites:

SgfI-MluI

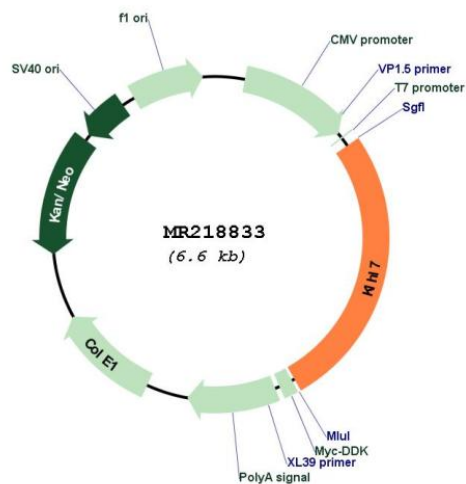
Cloning Scheme:

Cloning sites used for ORF Shutting:



* The last codon before the Stop codon of the ORF

Plasmid Map:



ACCN: NM_026448

ORF Size: 1758 bp

OTI Disclaimer:	The molecular sequence of this clone aligns with the gene accession number as a point of reference only. However, individual transcript sequences of the same gene can differ through naturally occurring variations (e.g. polymorphisms), each with its own valid existence. This clone is substantially in agreement with the reference, but a complete review of all prevailing variants is recommended prior to use. More info
OTI Annotation:	This clone was engineered to express the complete ORF with an expression tag. Expression varies depending on the nature of the gene.
Components:	The ORF clone is ion-exchange column purified and shipped in a 2D barcoded Matrix tube containing 10ug of transfection-ready, dried plasmid DNA (reconstitute with 100 ul of water).
Reconstitution Method:	<ol style="list-style-type: none">1. Centrifuge at 5,000xg for 5min.2. Carefully open the tube and add 100ul of sterile water to dissolve the DNA.3. Close the tube and incubate for 10 minutes at room temperature.4. Briefly vortex the tube and then do a quick spin (less than 5000xg) to concentrate the liquid at the bottom.5. Store the suspended plasmid at -20°C. The DNA is stable for at least one year from date of shipping when stored at -20°C.
RefSeq:	NM_026448.3 , NP_080724.2
RefSeq Size:	3427 bp
RefSeq ORF:	1761 bp
Locus ID:	52323
UniProt ID:	Q8BUL5
Cytogenetics:	5 10.67 cM
MW:	66.4 kDa
Gene Summary:	Substrate-specific adapter of a BCR (BTB-CUL3-RBX1) E3 ubiquitin ligase complex. The BCR(KLHL7) complex acts by mediating ubiquitination and subsequent degradation of substrate proteins. Probably mediates 'Lys-48'-linked ubiquitination (By similarity). [UniProtKB/Swiss-Prot Function]