

Product datasheet for MR218830

Clta (NM_016760) Mouse Tagged ORF Clone

Product data:

Product Type: Expression Plasmids
 Product Name: Clta (NM_016760) Mouse Tagged ORF Clone
 Tag: Myc-DDK
 Symbol: Clta
 Synonyms: AV026556; Lca
 Mammalian Cell Selection: Neomycin
 Vector: pCMV6-Entry (PS100001)
 E. coli Selection: Kanamycin (25 ug/mL)
 ORF Nucleotide Sequence: >MR218830 representing NM_016760
 Red=Cloning site Blue=ORF Green=Tags(s)

TTTTGTAATACGACTCACTATAGGGCGGCCGGAATTCGTCGACTGGATCCGGTACCGAGGAGATCTGCC
 GCCCGATCGCC

ATGGCCGAGTTGGATCCATTCGGCGCTCCCGCCGGTGCGCCGGTGGCCCCGCTCTAGGAAACGGGGTGG
 CGGGCGCCGCGAAGAAGACCCGGCCGGCCTTCTTGGCGCAGCAAGAGAGTGAGATTGCGGGCATCGA
 GAACGATGAGGCCTTCGCCATCCTGGACGGCGGCCCGCCCGCCAGCCACACGGCGAGCCGCCGGGA
 GGTCCGGATGCTGTTGACGGAGTGATGAATGGTGAATACTACCAGGAGAGCAATGGTCCAACAGACAGTT
 ACGCAGCCATTTCAAGTGGATCGATTGCAGTCAGAGCCTGAAAGTATCCGTAAGTGGAGAGAAGAGCA
 GACAGAGCGCCTGGAAGCCCTCGATGCCAATTCTCGGAAGCAAGAAGCGGAGTGGAAAGAAAAGGCGATA
 AAGGAGCTGGAAGAGTGGTATGCGAGGCAGGACGAGCTACAGAAGACAAAGGCAAACAACAGGGTGG
 CAGACGAAGCTTTCTACAAACAACCCCTTCGCTGACCTGATTGGTTATGTGGCAGCAGAAGAAGCCTTTGT
 AAACGACATTGACGAGTCATCCCAGGCACTGAGTGGGAGCGGGTGGCCCCGCTGTGTGACTTTAACCCC
 AAGTCCAGCAAACAGGCCAAAGATGTCTCTCGCATGCGCTCAGTCCTCATCTCCCTGAAGCAGGCCCCCC
 TGGTGAC

ACGCGTACGCGGCCGCTCGAGCAGAACTCATCTCAGAAGAGGATCTGGCAGCAAATGATATCCTGGATT
 ACAAGGATGACGACGATAAGGTTTAA



Protein Sequence: >MR218830 representing NM_016760
Red=Cloning site Green=Tags(s)

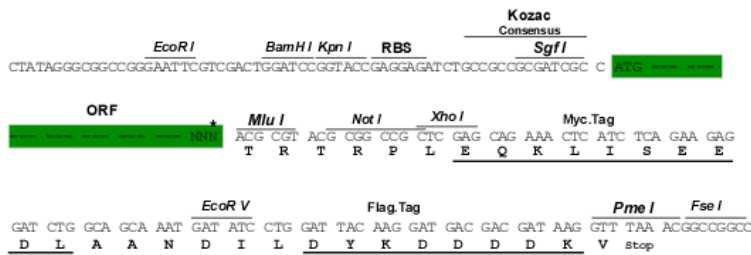
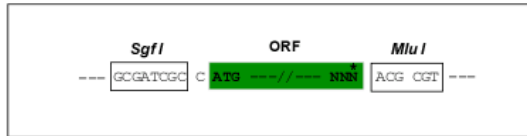
MAELDPFGAPAGAPGGPALGNVAGAGEEDPAAFLAQQESEIAGIENDEAFAILDGGAPGPQPHGPEPPG
 GPDAVDGVMNGEYYQESNGPTDSYAAISEVDRLQSEPESEIRKWREEQTERLEALDANSRKQEAWEKKEAI
 KELEEYARQDEQLQKTKANNRVADEAFYKQPFADLIGYVAAEEAFVNDIDESSPGTEWERVERLCDFNP
 KSSKQAKDVSRMRSVLISLKQAPLVH

TRTRPLEQKLISEEDLAANDILDYKDDDDKV

Restriction Sites: SgfI-MluI

Cloning Scheme:

Cloning sites used for ORF Shuttling:



ACCN: NM_016760

ORF Size: 708 bp

OTI Disclaimer: The molecular sequence of this clone aligns with the gene accession number as a point of reference only. However, individual transcript sequences of the same gene can differ through naturally occurring variations (e.g. polymorphisms), each with its own valid existence. This clone is substantially in agreement with the reference, but a complete review of all prevailing variants is recommended prior to use. [More info](#)

OTI Annotation: This clone was engineered to express the complete ORF with an expression tag. Expression varies depending on the nature of the gene.

Components: The ORF clone is ion-exchange column purified and shipped in a 2D barcoded Matrix tube containing 10ug of transfection-ready, dried plasmid DNA (reconstitute with 100 ul of water).

Reconstitution Method:

1. Centrifuge at 5,000xg for 5min.
2. Carefully open the tube and add 100ul of sterile water to dissolve the DNA.
3. Close the tube and incubate for 10 minutes at room temperature.
4. Briefly vortex the tube and then do a quick spin (less than 5000xg) to concentrate the liquid at the bottom.
5. Store the suspended plasmid at -20°C. The DNA is stable for at least one year from date of shipping when stored at -20°C.

RefSeq: [NM_016760.3](#)

RefSeq Size: 1163 bp

RefSeq ORF: 711 bp

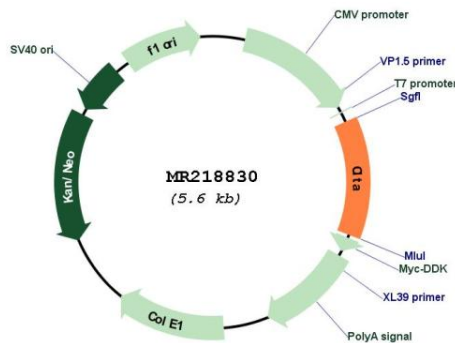
Locus ID: 12757

Cytogenetics: 4 B1

MW: 26.1 kDa

Gene Summary: Clathrin is a large, soluble protein composed of heavy and light chains. It functions as the main structural component of the lattice-type cytoplasmic face of coated pits and vesicles which entrap specific macromolecules during receptor-mediated endocytosis. This gene encodes one of two clathrin light chain proteins which are believed to function as regulatory elements. Alternative splicing results in multiple transcript variants encoding different isoforms. [provided by RefSeq, Jul 2008]

Product images:



Circular map for MR218830