

## Product datasheet for **MR218826**

### Gsdme (NM\_018769) Mouse Tagged ORF Clone

#### Product data:

Product Type:	Expression Plasmids
Product Name:	Gsdme (NM_018769) Mouse Tagged ORF Clone
Tag:	Myc-DDK
Symbol:	Gsdme
Synonyms:	2310037D07Rik; 4932441K13Rik; Dfna5h; EG14210; Fin15
Mammalian Cell Selection:	Neomycin
Vector:	pCMV6-Entry (PS100001)
E. coli Selection:	Kanamycin (25 ug/mL)



[View online »](#)

**ORF Nucleotide Sequence:**

>MR218826 ORF sequence  
 Red=Cloning site Blue=ORF Green=Tags(s)

TTTTGTAATACGACTCACTATAGGGCGGCCGGAATTCGTCGACTGGATCCGGTACCGAGGAGATCTGCC  
 GCC**CGGATCGCC**

ATGTTTGCCAAAGCAACTCGAAATTTTCTAAAGAAGTTGATGCTGGAGGAGACCTGATTCAGTCTCAC  
 ACTTGAACGACTCTGACAAGCTGCAACTTCTAAGTCTGGTGACCAAAAAGAAGAGATACTGGTGCTGGCA  
 GAGACCCAAGTACCAGATTTTATCTGCCACCCTGGAAGATGTA CTACAGAAGGGCACTGTCTCAGTCCA  
 GTGGTTGTGGAGTCACTTCGTGAAATACGAGAGCAAGTGTGAGAACCATAAGAGCGGGGCTATTGGGA  
 CAGTCTGGGGAAAGTCAAGCTGAACGTTGGTGGCAAAGCGTGGTGGAGAGTCACTCTTCGTTTGGAAC  
 CCTGAGGAAGCAGGAGGTGGACGTGCAGCAGCTCATCCAGGATGCCGTCAAGAGAACAGTTAATATGGAC  
 AACCTGGTACTTCAGCAGGTGCTAGAGAGCAGGAACGAGGTCTGTGTGTGCTGACGCAGAAGATCATGA  
 CCACGCAGAAGTGCCTGATTTCTGAGCATGTGCAGTCCGAGGAGACGTGTGGAGGCATGGTGGGGATCCA  
 GACCAAGACTATACAGGTGTCAGCAACGGAGGATGGGACTGTACCACAGACACCAATGTAGTGCTGGAG  
 ATCCCTGCTGCCACCACATTGCCTATGGCATCATGGAGCTGTTGTGAAACAAGATGGCCAGTTTGAAT  
 TCTGCCTCCTCCAAGGAAACATGGTGGCTTCGAGCATGAGAGGAACTAGACTCTGTCTACTTGGACCC  
 CCTGGCCTACAGAGAGTTCGCCTTTCTGGACATGCCGGATGGGGGTCAAGGGATCTCTTCGAGGACGGG  
 CCCCTACGAGTTGTAACAAGCAACCCCTGCACCTAGAGAGGAGTTTCCACCCCTTTGCGGTGTTACCTG  
 CCCAGCAGCAGAGGGCGCTGTTCTGTGTCTGCAGAAAATCCTGTTTGATGAAGAAGTCTTCGGGCCCT  
 GGAGCAAGTGTGTGATGATGTGGCTGGTGGCCTCTGGTCTCACAGGCTGATTGGCAATGGAGGAGCTG  
 ACCGACAGTCAGCAGCAGGACCTCACAGCCTTCTTGCAGCTGGTGGGATACAGGATACAAGGAGAGCATC  
 CTGGCCCCACAGGATGAGGTGAGCAACAGAGCTTTTGAACAGCCTACTTCTGGTCAGCCGACTAGC  
 AGAAATGCCTGATAATGCCACAGTTTTCTGGGACTTGCTGCAAACTCCATGTTATTTCTTCGCTGTGC  
 TGCTTGCTCCATGCTCTGTCTGATGACAGCGTGTGTGATTTTCAACCCACCTTGCTCCTCTGAGAG  
 ACACAGAGAGTTTGGCATTGTGCAGCGATTGTTTGCCTCTGCTGACATTGCCCTGGAGAGGATGCAGTT  
 TTCTGCGAAAGCCACCATCCTGAAGGACTCTTGCATCTTCCCGCTAATTCTTACATCACTCTAAGTGGG  
 CTCAGCACTCTAAGCAAAGAGCATGAGGAAGAGCTTTGTCAGTCAGGACATGCTACAGGTCAAGAC

**ACGCGT**ACGCGGCCGCTCGAGCAGAACTCATCTCAGAAGAGGATCTGGCAGCAAATGATATCTGGATT  
 ACAAGGATGACGACGATAAGGTTTAA

**Protein Sequence:**

>MR218826 protein sequence  
 Red=Cloning site Green=Tags(s)

MFAKATRNFLKEVDAGGDLISVSHLNDSDKLQLLSLVTKKKRYWCWQRPKYQILSATLEDVLTGHC LSP  
 VVVESDFVKYESKCNHKSAGIAGTVVGVKLVNKGKGVVESHSSFTLRKQEVVQQLIQDAVKRTVNMD  
 NLV LQQVLESRNEVLCVLTQKIMTTQKCVISEHVQSEETCGGMVGIQTKTIQVSATEDGTVTTDTNVLE  
 IPAATTIAYGIMELFVKQDGFQFCLLQKHKHGFHERKLDVSYLDPLAYREFAFLDMPDGGQGISSQDG  
 PLRVVKQATLHLERSFHPFAVLPAQQRALFCVLQKILFDEELLRALEQVCDVAGGLWSSQAVLAMEEL  
 TDSQQQDLTAFLQLVGYRIQGEHPGPQDEVSNQKLFATAYFLVSALAEMP DNATVFLGTCKLHVSSLC  
 CLLHALSDDSVCFHNPTLAPLRDTERFGIVQRLFASADIALERMQFSAKATILKDCSIFPLILHITLSG  
 LSTLSKEHEEELCQSGHATGQD

**TRTRPLEQKLI**SEEDLAANDILDYKDDDDKV

**Restriction Sites:**

Sgfl-MluI

**Cloning Scheme:**


**ACCN:** NM\_018769

**ORF Size:** 1539 bp

**OTI Disclaimer:** The molecular sequence of this clone aligns with the gene accession number as a point of reference only. However, individual transcript sequences of the same gene can differ through naturally occurring variations (e.g. polymorphisms), each with its own valid existence. This clone is substantially in agreement with the reference, but a complete review of all prevailing variants is recommended prior to use. [More info](#)

**OTI Annotation:** This clone was engineered to express the complete ORF with an expression tag. Expression varies depending on the nature of the gene.

**Components:** The ORF clone is ion-exchange column purified and shipped in a 2D barcoded Matrix tube containing 10ug of transfection-ready, dried plasmid DNA (reconstitute with 100 ul of water).

**Reconstitution Method:**

1. Centrifuge at 5,000xg for 5min.
2. Carefully open the tube and add 100ul of sterile water to dissolve the DNA.
3. Close the tube and incubate for 10 minutes at room temperature.
4. Briefly vortex the tube and then do a quick spin (less than 5000xg) to concentrate the liquid at the bottom.
5. Store the suspended plasmid at -20°C. The DNA is stable for at least one year from date of shipping when stored at -20°C.

**RefSeq:** [NM\\_018769.1](#), [NM\\_018769.2](#), [NM\\_018769.3](#), [NP\\_061239.1](#)

**RefSeq Size:** 2133 bp

**RefSeq ORF:** 1539 bp

**Locus ID:** 54722

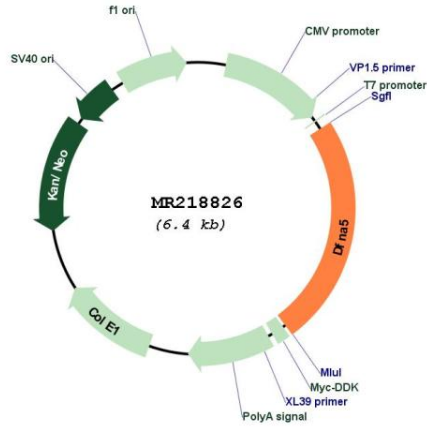
**UniProt ID:** [Q9Z2D3](#)

**Cytogenetics:** 6 B2.3

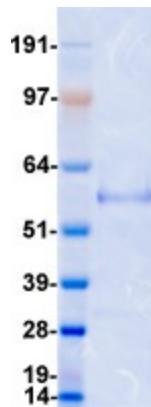
MW: 56.6 kDa

Gene Summary: Plays a role in the TP53-regulated cellular response to DNA damage probably by cooperating with TP53.[UniProtKB/Swiss-Prot Function]

**Product images:**



Circular map for MR218826



Coomassie blue staining of purified Gsdme protein (Cat# [TP518826]). The protein was produced from HEK293T cells transfected with Gsdme cDNA clone (Cat# MR218826) using MegaTran 2.0 (Cat# [TT210002]).