

Product datasheet for **MR218734**

Caprin1 (NM_001111290) Mouse Tagged ORF Clone

Product data:

Product Type:	Expression Plasmids
Product Name:	Caprin1 (NM_001111290) Mouse Tagged ORF Clone
Tag:	Myc-DDK
Symbol:	Caprin1
Synonyms:	AL022980; Caprin-1; Gpiap; Gpiap1; Mmgpip137; P137; rng105
Mammalian Cell Selection:	Neomycin
Vector:	pCMV6-Entry (PS100001)
E. coli Selection:	Kanamycin (25 ug/mL)



[View online »](#)

**ORF Nucleotide
Sequence:**

>MR218734 representing NM_001111290
 Red=Cloning site Blue=ORF Green=Tags(s)

TTTTGTAATACGACTCACTATAGGGCGGCCGGGAATTCGTCGACTGGATCCGGTACCGAGGAGATCTGCC
 GCC**CGGATCGCC**

ATGCCCTCGGCCACCAGCCACAGCGGAAGCGGCAGCAAATCGTCGGGACCGCCGCCCGTCCGGTTCCT
 CCGGGAGTGAGGCGGCCGCCGGGCAGCTGCGCCGGCTTCTCAGCATCCGGCAACCGGCACCGGCCCGT
 CCAGACCAGGCCATGAAGCAGATTCTCGGCGTAAATCGACAAGAACTTCGGAACCTGGAGAAGAAAAAG
 GGTAAACTTGATGATTACCAGGAACGAATGAATAAAGGGGAAAGGCTCAATCAAGACCAGCTGGATGCCG
 TATCTAAGTACCAGGAAGTCACAAATAATTTGGAGTTTGCAAAGGAATTACAGAGGAGTTTCATGGCATT
 AAGTCAAGATATTCAGAAAAAATAAAGAAGACAGCACGTCGGGAACAGCTTATGAGAGAAGAAGCAGAA
 CAGAAGCGCTTAAAACTGTACTTGAGTTACAGTATGTATTGGATAAGCTGGGAGATGATGATGTGAGAA
 CAGATCTGAAACAAGTTTGAGTGGAGTGCCAATATTGTCTGAGGAGGAGTTGTCATTGCTGGATGAGTT
 CTACAAGCTCGTAGATCCTGAGCGTGACATGAGTTTAAAGTTAAATGAGCAGTATGAACATGCCTCAATT
 CACTTGTGGGATTTGCTGGAAGGAAAGAAAAGCCTGTGTGTGGAACAACCTATAAAGCTCTAAAGGAAA
 TTGTTGAGCGTGTTCAGTCAAACACTTTTGATAGCACTCACAAATCATCAAAATGGGTTGTGTGAGGA
 GGAAGAGGCGGCTTCAGCGCCACAGTGGAGGACCAGGTAGTGAAGCTGAACCTGAGCCAGCGGAAGAA
 TACACAGAGCAAAGTGAGGTTGAATCAACAGAGTATGTCAATAGGCAGTTCATGGCAGAAACACAGTTCA
 GCAGTGGTGAGAAGGAGCAAGTGGATGAGTGGACAGTTGAAACAGTTGAGGTTGTAACCTCACTCCAGCA
 GCAACCTCAGGCTGCGTCCCCTTCAGTCCCAGAGCCCCACTCTTTGACTCCAGTGGCTCAGTCAGATCCA
 CTTGTGAGAAGGCAGCGTGTACAAGATCTATGGCACAATGCAAGGGCCCTATAATTTACATACAGACGC
 CCCTCAGGTTTATTCTGAATCTAGACTTGCCCAATCTAATCAAGTTCCTGTACAACCAGAAGCCACACAG
 GTTCCTTTGGTTTCATCCACAAGTGAGGGGTATACAGCATCTCAGCCCTGTACCAGCCATCTCATGCTA
 CGGAGCAGCGGCCGAGAAAGAGCCAATGGATCAGATTCAGGCAACAATATCTTTGAATACAGACCAGAC
 TACAGCATCCTCATCCCTTCTGCTGCTTCTCAGCCTCAAGTGTCCAGGCTGGGACAAGTAAACCTTTG
 CACAGCAGTGGAAATCAATGTAATGCAGCTCCATTCCAGTCCATGCAAACGGTGTCAATATGAATGCTC
 CAGTCCCTCTGCTAATGAACCAGAAACGTTAAAACAACAGAGTCAGTACCAGGCCACTATAACCAGAG
 TTTTTCCAGTCAGCCTCACCAAGTGAACAACAGAGCTTCAACAAGACCAACTGCAAACGGTGGTTGGC
 ACTTACCATGGATCCCAGGACCAGCCTCATCAAGTGCCTGGTAACCACCAGCAACCCCCACAGCAGAACA
 CTGGCTTTCCACGTAGCAGTCAGCCTTATTACAACAGTCGTGGGTATCTCGAGGAGGGTCTCGTGGTGC
 CAGAGGCTTGATGAATGGATACAGGGGCCCTGCCAATGGATTTAGAGGAGGATATGATGGTTACCGCCCT
 TCATTCTCGAACACTCCAACAGTGGTTATTACAGTCTCAGTTCACTGCTCCCCGGGACTACTCTGGTT
 ACCAGCGGGATGGATATCAGCAGAAATTTCAAGCGAGGCTCTGGGCAGAGTGGACCACGGGGAGCCCCACG
 AGGTCGTGGAGGGCCCCAAGACCCAACAGAGGGATGCCGCAATGAACACTCAGCAAGTGAAT

ACGCGTACGCGGCCGCTCGAGCAGAACTCATCTCAGAAGAGGATCTGGCAGCAAATGATATCCTGGATT
 ACAAGGATGACGACGATAAGGTTTAA

Protein Sequence: >MR218734 representing NM_001111290

Red=Cloning site Green=Tags(s)

```
MPSATSHSGSGSKSSGPPPPSGSSGSEAAAGAAAPASQHPATGTGAVQTEAMKQILGVIDKCLRNLKLEKK
GKLDDYQERMNKGERLNQDQLDAVSKYQEVNTNLEFAKELQRSFMALSQDIQKTIKKTARREQLMREEAE
QKRLKTVLELQYVLDKLGDDVVRTDLKQGLSGVPILSEELSLLEFYKLVDPERDMSLRLENEQYEHASI
HLWDLLEGKEKPVCGTTYKALKEIVERVFSNYFDSTHNHQNGLCEEEEEASAPTVEDQVAEAEPEPAEE
YTEQSEVESTYVNRQFMAETQFSSGEKEQVDEWTVETVEVVNSLQQQPQAASPSVPEPHSLTPVAQSDP
LVRRQRVQDLMAQMGGPYNFQITLDPALVSAQPMNPTQNMMPQLVCPQVHSESRLAQSNNQVPVQPEATQ
VPLVSSTSEGYTASQPLVQPSHATEQRPQKEPMDQIQATISLNTDQTTASSSLPAASQPQVFQAGTSKPL
HSSGINVNAAPFQSMQTVFNMNAPVPPANEPETLKQSSQYQATYNQSFSSQPHQVEQTELQDQLQTVVG
TYHGSQDQPHQVPGNHQPPQQNTGFPRSSQPYNSRGVSRGGSRGARGLMNGYRGPANGFRGGYDGYRP
SFNTPNSGYSQSQFTAPRDYSYQRDGYQQNFKRSGSQSGPRGAPRGRGGPPRPNRGMQMNTQQVN
```

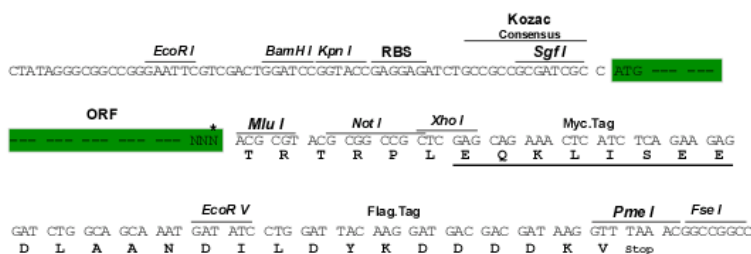
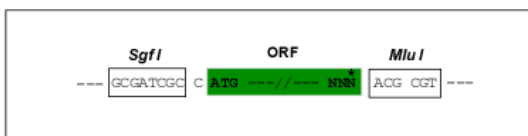
TRTRPLEQKLISEEDLAANDILDYKDDDDKV

Chromatograms: https://cdn.origene.com/chromatograms/mm9035_b02.zip

Restriction Sites: SgfI-MluI

Cloning Scheme:

Cloning sites used for ORF Shuttling:



* The last codon before the Stop codon of the ORF

ACCN: NM_001111290

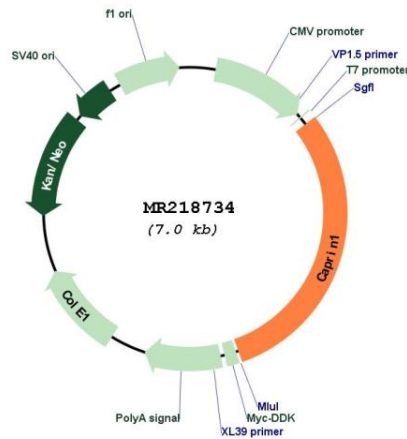
ORF Size: 2094 bp

OTI Disclaimer: The molecular sequence of this clone aligns with the gene accession number as a point of reference only. However, individual transcript sequences of the same gene can differ through naturally occurring variations (e.g. polymorphisms), each with its own valid existence. This clone is substantially in agreement with the reference, but a complete review of all prevailing variants is recommended prior to use. [More info](#)

OTI Annotation: This clone was engineered to express the complete ORF with an expression tag. Expression varies depending on the nature of the gene.

- Components:** The ORF clone is ion-exchange column purified and shipped in a 2D barcoded Matrix tube containing 10ug of transfection-ready, dried plasmid DNA (reconstitute with 100 ul of water).
- Reconstitution Method:**
1. Centrifuge at 5,000xg for 5min.
 2. Carefully open the tube and add 100ul of sterile water to dissolve the DNA.
 3. Close the tube and incubate for 10 minutes at room temperature.
 4. Briefly vortex the tube and then do a quick spin (less than 5000xg) to concentrate the liquid at the bottom.
 5. Store the suspended plasmid at -20°C. The DNA is stable for at least one year from date of shipping when stored at -20°C.
- RefSeq:** [NM_001111290.1](#), [NP_001104760.1](#)
- RefSeq Size:** 6114 bp
- RefSeq ORF:** 2097 bp
- Locus ID:** 53872
- UniProt ID:** [Q60865](#)
- Cytogenetics:** 2 E2
- MW:** 77.5 kDa
- Gene Summary:** May regulate the transport and translation of mRNAs of proteins involved in synaptic plasticity in neurons and cell proliferation and migration in multiple cell types (PubMed:20516077). Binds directly and selectively to MYC and CCND2 RNAs. In neuronal cells, directly binds to several mRNAs associated with RNA granules, including BDNF, CAMK2A, CREB1, MAP2, NTRK2 mRNAs, as well as to GRIN1 and KPNB1 mRNAs, but not to rRNAs (By similarity).[UniProtKB/Swiss-Prot Function]

Product images:



Circular map for MR218734