

Product datasheet for **MR218713**

Scube2 (NM_020052) Mouse Tagged ORF Clone

Product data:

Product Type:	Expression Plasmids
Product Name:	Scube2 (NM_020052) Mouse Tagged ORF Clone
Tag:	Myc-DDK
Symbol:	Scube2
Synonyms:	4932442O19Rik; Cegf1; Cegp1
Mammalian Cell Selection:	Neomycin
Vector:	pCMV6-Entry (PS100001)
E. coli Selection:	Kanamycin (25 ug/mL)



[View online »](#)

ORF Nucleotide Sequence:

>MR218713 representing NM_020052
 Red=Cloning site Blue=ORF Green=Tags(s)

TTTTGTAATACGACTCACTATAGGGCGGCCGGGAATTCGTCGACTGGATCCGGTACCGAGGAGATCTGCC
 GCC**CGGATCGCC**

ATGGGGTTCGCGGTTGCGGTTCGCGCTCGGAAGCCCGGGCGCTGTTGCTGCTGCTGCTGCTGCTGCCG
 CGCTGCTGGCCGCGCCGTCCTCCCGACCGGGTCTCACCAACGGCCGTCGAGGATGTGGATGAGTG
 TGCCCAAGGGCTCGATGACTGCCATGCTGATGCACTGTGTGAGAACACACCCACTTCTACAAGTCTCT
 TGCAAGCTGGTACCAAGGGGAAGGCAGGCACTGTGAGGACATGGATGAATGTGACAACACTCAACG
 GAGGCTGTGCCAGACTGTTAAATATCCAGGCAACTATCGCTGCACCTGTTTCGATGGCTTCATGTT
 GGCTCATGATGGTCATAATTGCTTGATATGGACGAATGCTTGGAGAACAATGGTGGCTGCCAGCACATC
 TGCACCAACGTTATTGGGAGCTATGAATGTCGCTGCAAAGAAGGTTTCTTTCTAAGTGACAATCAGCACA
 CTTGCATTACCCGCTCAGAAGAAGGCTGAGCTGTATGAACAAGGATCATGGCTGTGGTTCACATCTGCAA
 GGAGGCCCAAGAGGCAGCGTTGCTGTGAATGCAGGCTGGTTTTGAACTGGCCAAAACAGAAAGAC
 TGCACTTTGACTTGTAAACCATGGAATGGTGGGTGTCAGCACTCTGTGAAGATACAGCAGAAGGCCCTG
 AGTGTAGTTGCCATCCACGGTATAGGTTGCATGCTGATGGGAGAAGCTGCCTAGAGCAAGAGGGCACTGT
 CTTGGAGGGGACAGAGCAATGCCACATCAGTGGCGGATGGAGATAAACGGGTGAAGCGTCCGGTCTC
 ATGGAAACGTGTGCCGTCACCAACGGAGGCTGCGACCCGACCTGTAAAGACAGTCCACAGGCGTCCACT
 GCAGCTGCCCCACTGGATTCACCTCTCCAGGTGGATGGGAAGACATGTAAGATATCGATGAGTGCCAGAC
 CCGGAATGGAGGTTGTAACCATTTCTGCAAAAACACCGTGGGCAGTTTGGACTGCAGTTGCAAAAAGGA
 TTTAAATTAACAGACGAGAAGTCTTGCCAAGATGTGGATGAATGTTGTTGGAAAGGACCTGTGACC
 ACAGTTGCATCAACCACCTGGCACATTTATTTGCTGCAACCCAGGGTACACTCTCTATAGCTTCCAC
 CCACTGTGGAGACACCAACGAGTGCAGTGTCAACAATGGAGGCTGCCAGCAAGTGTGCATCAACACAGTG
 GGTAGCTACGAATGTCAGTGTACCCAGGGTCAAACCTCACTGGAATAAAAAAGACTGTGTGGAAGTGA
 AGGGCTTCCCGCCACTAGCATGACACCGCGTGTCCCTGCACTGTGGTAAAAGTGGTGGAGGAGACAG
 GTGCTTCCCTCAGATGTCGCTCTGGCATTACCTCTCGTCAGGACTGCAAGAGGCTTACTCTGTCACCTGT
 GGCTTCTCTCTCAGAAGCAAACAGCAAAAATCAAATGACTCTGCCTTTGGGGATGTCGTCCCGTCA
 GGACAAGTGAACCTTAAAGCTAAATGAAGGCAAGTGTAGTTGCAAAAAGGCAAGCTGTCTCCCGAGGG
 TCTACGACCAGCACTACCAGAGAGGCACAGCTCAGTAAAAGAGAGCTTCCAGTACGCAAACTTACATGC
 AGCCCTGGCAAGCAAGTCCCGGAGCCCTTGGCCGACTGAACGCCCTAAGGAAATGTTTATCACGGTTG
 AGTTTGAACGGGAACTTACGAAAAGGAGGTGACAGCTTCTGCAATCTGAGCTGCGTGGTAAAGCGGAC
 AGAGAAGAGACTGCGGAAAGCTCTCCGCACACTCAAGAGAGCTGCCACAGGGAGCAGTTTCATCTGCAG
 CTCTCAGGCATGGACCTCGATATGGCTAAAACGCCCTCCAGAGTGTGAGGACAGCATGAAGAGACCTGTG
 GAGTGGGACAGGGTATGAAGAAAGCCAGTGTGGCCTTTGTCAGCCAGGTGAATATTCAGCAATGGATT
 TGCCCCCTTGCCAGCTCTGTGCCCTGGGCACCTTTCAGCCTGATGTGGGCCGTACATCTTGCCCTCATGC
 GGAGGAGGTCTTCCACCAAACATCTGGGAGCCACTTCCCTCCAGGATTGTGAAACCCGAGTTCAATGCT
 CGCCTGGGCATTTCTACAACACCACACACCCGATGTATCCGATGCCCACTAGGGACATACCAGCCTGA
 ATTTGGAAAAAATAATTGTGTTTCTGCCGGGCAATACTACCACCGACTTGTGATGGCTCCACCAACATA
 ACACAGTGTAAAAACAGAAAGTGTGGAGGGAGCTGGGGGATTTACAGGGTATATTGAATCCCAAACCT
 ACCCTGGGAACTACCCAGCAACTCAGAGTGCACCTGGACCATCAACCCACCCCAACCCGCGGATCCT
 GATTGTGGTCCCTGAGATCTTCTGCCATAGAGGATGACTGCGGTGACTACCTGGTGTGCGGAAAACC
 TCTTCATCAAATCTGTGACCACATATGAAACCTGCCAGACTTATGAACGCCCATCGCCTTACCTCCA
 GGTCAAAGAACTGTGGATTCAAGTCCAATGAAGGGAACAGTGCCCGGGGTTCCAGGTTCCCTA
 TGTGACATACGATGAGGACTACCAGGAGCTCATTGAAGACATAGTTCGAGATGGCAGGCTCTATGCCTCT
 GAGAACCATCAGGAAATACTGAAGGATAAGAACTGATCAAGGCTCTGTTTGTGCTGCTGGCACATCCCC
 AGAACTATTTCAAGTACACAGCCAGGAGTCCCGAGAGATGTTTCAAGATCTTTCATCCGATTGCTACG
 TTCCAAAGTGTCAAGGTTTCTGAGGCCTTACAAA

ACGCGTACGCGGCCGCTCGAGCAGAAACTCATCTCAGAAGAGGATCTGGCAGCAAATGATATCCTGGATT
 ACAAGGATGACGACGATAAGGTTTAA

Protein Sequence: >MR218713 representing NM_020052
 Red=Cloning site Green=Tags(s)

MGVAGCGRPREARALLLLLLLPLLA AVPPDRGLTNGPSEDVDECAQGLDDCHADALCQNTPTS YKCS
 CKPGYQGEGRQCEDMDECDNTLNGGCVHDCLNIPGNYRCTCFDGFMLAHDGHNCLDMDECLENNCGCQHI
 CTNVIGSYECRCKEGFFLSDNQHTCIHRSEEGLSCMNKDHGCGHICKEAPRGSVACECRPGFELAKNQKD
 CILTCNHGNGGCQHSCEDTAEGPECSCHPRYRLHADGRSCLEQEGTVLEGTESNATSVADGDKRVKRRLL
 METCAVNNGGCDRTCKDSTGVHCSCPTGFTLQVDGKTKCKDIDECQTRNGGCNHFCKNTVGSFDCSCKKG
 FKLLTDEKSCQDVDECSLERTCDHSCINHPGTFICACNPGYTLYSFTHCGDGTNECSVNNGGCQQVCINTV
 GSYECQCHPGFKLHWNKDCVEVKGFPPPTSMTPRVSLHCGKSGGDRCFLRCRSGIHLSSGLQEAYSVTC
 GSSSLRSKQQKSNDSAFGDVVTVRTSVTFKLNKGKCSLQKAKLSPEGLRPALPERHSSVKESFYANLTC
 SPGKQVPGALGRLNAPKEMFITVEFERETYEKEVTASCNLSCVVKRTEKRLRKALRTLKRAAHREQFHLQ
 LSGMDLMAKTPSRVSGQHEETCGVQGHEESQCGLCQPGEYSANGFAPCQLCALGTFQPDVGRVTSCLSC
 GGLPTKHLGATSFQDCETRVQCSPGHFYNTTTHRCIRCPLGTYPQPEFGKNNVSCPGNTTDFDGSNTI
 TQCKNRKCGGELGDFGTGYESPNYPGNYPANSECTWTINPPPKRRILIVVPEIFLPIEDDCGDYLVMRKT
 SSSNSVTTYETCQTYERPIAFTSRSKLWIQFKSNEGNSARGFQVPYVTVYDEYQELIEDIVRDGRLYAS
 ENHQEILKDKKLIKALFDVLAHPQNYFKYTAQESREMFPRSFIRLLRSKVSRLRPYK

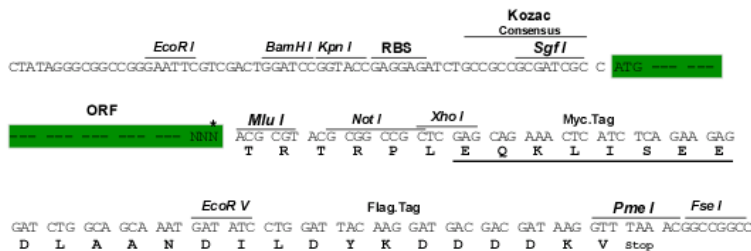
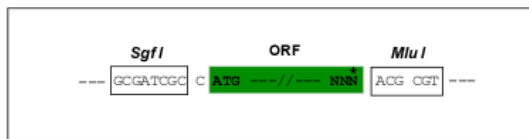
TRTRPLEQKLISEEDLAANDILDYKDDDDKV

Chromatograms: https://cdn.origene.com/chromatograms/mm9002_g05.zip

Restriction Sites: SgfI-MluI

Cloning Scheme:

Cloning sites used for ORF Shuttling:



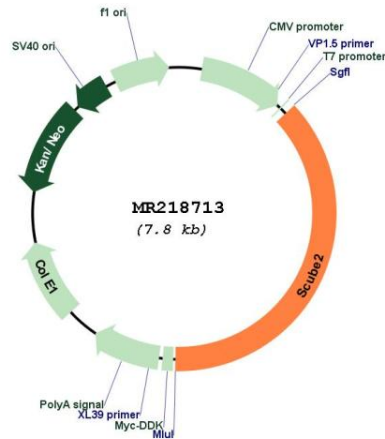
* The last codon before the Stop codon of the ORF

ACCN: NM_020052

ORF Size: 2904 bp

- OTI Disclaimer:** The molecular sequence of this clone aligns with the gene accession number as a point of reference only. However, individual transcript sequences of the same gene can differ through naturally occurring variations (e.g. polymorphisms), each with its own valid existence. This clone is substantially in agreement with the reference, but a complete review of all prevailing variants is recommended prior to use. [More info](#)
- OTI Annotation:** This clone was engineered to express the complete ORF with an expression tag. Expression varies depending on the nature of the gene.
- Components:** The ORF clone is ion-exchange column purified and shipped in a 2D barcoded Matrix tube containing 10ug of transfection-ready, dried plasmid DNA (reconstitute with 100 ul of water).
- Reconstitution Method:**
1. Centrifuge at 5,000xg for 5min.
 2. Carefully open the tube and add 100ul of sterile water to dissolve the DNA.
 3. Close the tube and incubate for 10 minutes at room temperature.
 4. Briefly vortex the tube and then do a quick spin (less than 5000xg) to concentrate the liquid at the bottom.
 5. Store the suspended plasmid at -20°C. The DNA is stable for at least one year from date of shipping when stored at -20°C.
- RefSeq:** [NM_020052.2](#), [NP_064436.2](#)
- RefSeq Size:** 3576 bp
- RefSeq ORF:** 2907 bp
- Locus ID:** 56788
- Cytogenetics:** 7 57.53 cM
- MW:** 107.1 kDa

Product images:



Circular map for MR218713