

## Product datasheet for **MR218701**

### **Nsmaf (NM\_010945) Mouse Tagged ORF Clone**

#### **Product data:**

Product Type:	Expression Plasmids
Product Name:	Nsmaf (NM_010945) Mouse Tagged ORF Clone
Tag:	Myc-DDK
Symbol:	Nsmaf
Synonyms:	AA959567; C630007J05; Fan
Mammalian Cell Selection:	Neomycin
Vector:	pCMV6-Entry (PS100001)
E. coli Selection:	Kanamycin (25 ug/mL)



[View online »](#)

ORF Nucleotide  
Sequence:

>MR218701 ORF sequence  
 Red=Cloning site Blue=ORF Green=Tags(s)

TTTTGTAATACGACTCACTATAGGGCGGCCGGGAATTCGTCGACTGGATCCGGTACCGAGGAGATCTGCC  
 GCC**CGCATCGCC**

ATGGCGTTACCCGGAAGAGGCAGCGCAGCAGCTGCAGCTCTACTCCAAGGAGAGGTTTTCTTAC  
 TGCTTCTCAACTTGAGGAGTACTACTTTGAGCAGCACACAGCGTTCCATGTCCAGCACCAGGGCAGCCA  
 GGAAGAAAGGAAAATCAGAGGCTCCTTAAAGATATGTTCAAATCAGTGATTTTTGAACCAGATGAATA  
 TCTCAGCCATTCTTAAGATTCTTTGAGAGACTGTTAAAAATAGGAAAACATGGAGAAAATGGAGCCA  
 AATAACACTTTGCAAAGGCAAAATCATGGGGTATTTCACTCATTTTCAGTCAGATATACTTTATTAAGGA  
 GCACAACATTGTGGCACCATAAGATAGAGCGGGGAAAAATGGAGTATGTCTTTGAACTGGAAGTTTCT  
 GGGAAAGTGGAAGATGTTGTGGAGACATTGCTACAGCTGCACAGAGCATCCTGCCTTGATAAACTGGTG  
 ACCAAATGGCCATGATAACAGCTATCTTGCACTCAGTCTGGCTAGGACATCATTTGACAAAAACAGGTT  
 CCAAAGTGTCTGAAAAGCTGCACATGGAGTCAAAGCAGAGATGGTAACACCTCTAGTGACGAAACCT  
 GGGCATGTGTGCATTACAGACACCAGCCTGATTTCCAGCCTCTCAATGGGTACCCGAAAACCTGTGGTCC  
 AGATAACACTGCAGGATGTCCGGCGCATTTACAAAAGGAGGCACGGCCTCATGCCTTTGGCTTGGAAAT  
 GTTTTGCACAGATGACGACCTGTGTTCCGACATATACCTAAAGTTCTATGAGCCTCAAGCAGAGATGAT  
 CTCTATTTTTATATCGCCACGTACCTAGAACACCACGCTGCAGAACACACTGCGGAGAGCTACATGCTGC  
 AGTGGCAGCGAGGGCACCTTTCCAACCTACCAGTACCTGCCTCACCTCAACAACCTGGCCGACCGCAGCTG  
 CAATGACCTGTCCAGTACCCTGTGTTCCATGGATAAAGTGATTACTCCAGCCAGAGCTAGATTTG  
 TCAAATCTGCAACCTTCCGAGATCTTAGTAAGCCAGTGGGAGCCCTAAATGCGGAGCAGCTGGAGAGAC  
 TGCTGACTCGATACCAGGAAATGCCTGAGCCAAGATTATGATGAGGAGTCACTACTCTTCCAGGCTA  
 TGTGCTCTTTTACCTCGTTAGGATCGCACAGAGTATATGCTGTGCTACAAAATGGAAGATTTGATAAT  
 GCAGATAGGATGTTTAAACAGTATTGCAGAAACGTGAAAAACTGTTGGATGGTGAACGGATTTTAAAG  
 AGTTGATCCAGAATTCTATGATGAAGACGTGAGCTTTTTGGTCAATAGTCTGAAGCTGGATCTGGGAAA  
 GAGACAAGGCGGGCAGATGGTTGATGACGTGGACCTTCCAGCCTGGGCCTCAAGTCCCAAGACTTCCCTG  
 CAGAAGAAACAAGGATGCCTTGGAAAGCGGTTACGTGTCTGAGCACCTTATGAGTGGATTGATCTGATAT  
 TTGGCTATAAGCAAAAAGGGAGTGAAGCCATAGGGGCCATAACGTGTTTATCCCTGACCTATGAAGG  
 TGGTGTAGACTTGAACAGCATTGAGGATCTGATGAAAAAGTAGCCATGCTGACCCAAATTTTGAATTT  
 GGGCAGACACCAAAACAGCTGTTTGTGACACCACATCCTCGAAGGATCACCCCAAGTTTAAAAGTTTGT  
 CCCAAGCCTCCAGCTACAACGCTTCTCTGACAGACTCCCAAGTTTCTCCAGGGGAGGAGTCTTTGAAGA  
 CCTGACTGAGGAAAGCAGAACTCTGGCCTGGAGTAATATCGCCAAGCTGCAGCTACATGAGCAGTACAAG  
 ATCCACAAAGAGGCGGTTACAGGGATAGCAGTGTCTTGCAATGGCTCTTCACTCTTTACCACCTCCCAAG  
 ATTCCACTTTGAAGATGTTTTCTAAGGAATCCAAAATGCTACAAAGAAGTATATCATTTTCCAATATGGC  
 TTTATCCTCTTGTACTGTTGCCGGGAGACCACTGTGATAAGTTCTTCTTGGGATAACAACGTCTAT  
 TTTTATCCATAGCATTGGAAGACGCCAAGATACACTGATGGGACATGACGATGCTGTCAGTAAGATCT  
 GTTGGCATAACGACAGGCTGACTCTGGATCTTGGGACTCTACTGTGAAGGTGTGGTCCGGTGTCTCTGC  
 AGAAATGCCAGGAACAAAAGACACCAGTTTACTTACTGGCTGAGCTTGAACATGATGTCAGCGTCAAT  
 ACTATCAATTTAAATGCTGTGAGCACACTGTTAGTTTCTGGCACCAAGAAGGCATGGTGAATATTTGGG  
 ACCTCACTACAGCCACTTTATTACACCAGACTTATGCCATTACAGGACAGTATGTGATGCTGCTTTTAG  
 CCCAGATAGTCGCCACATCCTCAGCACGGGCTAGATGGATGTCTCAATGTGATTGATGTGCAGACGGGC  
 ATGCTCATCTCTCCATGGCCTCAGAGGAGCCGCAGAGGTGCTTTGTCTGGGATGGAATTTCTGTCTTAT  
 CTGGAAGTCGGTCTGGTGTGAGCTGCTTGTGGGACCTCCTGGAGCAAAAGTCAGTGAGCGGATTACGGG  
 CCACACTGGTGTGACATGCATGTGGATGAACGAACAGTGTAGCAGTATTATCACCGGAGGGGAAGAC  
 AGACAAATATGTTCTGGAAATTGCAGTAT

**ACGCGT**ACGCGGCCGCTCGAGCAGAAACTCATCTCAGAAGAGGATCTGGCAGCAAATGATATCCTGGATT  
 ACAAGGATGACGACGAT AAGGTTTAA

Protein Sequence: >MR218701 protein sequence  
 Red=Cloning site Green=Tags(s)

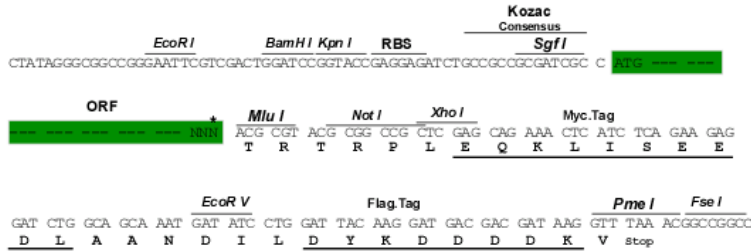
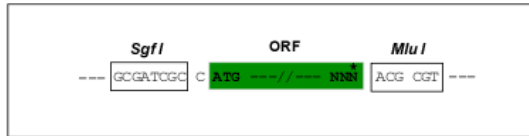
MAFTRKRQREQQQLQLYSKERFSLLLLNLEYYFEQHTAFHVQHQGSQEERKIRGSLKICSKSVIFEPDAI  
 SQPILKIPLRDCLKIGKHGENGANKHF AKA KSWGISLIFSQIYF IKEHNI VAPYKIERGKMEYVFELEVS  
 GKVEDVETLLQLHRASCLDKLGDQMAMITAILQSRLARTSFDKNRFQSVSEKLHMECKAEMVTPLVNTP  
 GHVCITDTSLYFQPLNGYPKPVVQITLQDVRRYKRRHGLMPLGLEVFCTDDDLCSDIYLFYEPQDRDD  
 LYFYIATYLEHHA AEHTAESYMLQWQRGHL SNYQYLLHNLNADRSCNDLSQYPVFPWII SDYSSPELDL  
 SNPATFRDLSKPVGALNAERLERLLTRYQEMPEPRFMYGSHYSSPGYVLFYLVRIAPEYMLCLQNGRFDN  
 ADRMFNSIAETWKNCLDGATDFKELIPEFYDEDVSFLVNSLKL DLGKRQGGQMVDDV DLP AWASSPQDFL  
 QKNKDALESGYVSEHLHEWIDLIFGYKQKGSEAI GAHNVFHLTYEGGVDLNSIEDPDEKVAML TQILEF  
 GQTPKQLFVTPHPRITPKFKSL SQASSYNASL TSPVSPGEE SFEDL TEESRTLAWSNIAKLQLHEQYK  
 IHKEAVTGI AVSCNGSSVFTTSQDSTLKMFSKESKMLQRSISFNMALSSCLLLPGDTTVISSSWDNVY  
 FYSIAFGRRQDTLMGHDDAVSKICWHNDRL YSGSWDSTVKVWVGVAEMP GTRKHQFDLLAELEHDVSVN  
 TINLNAVSTLLVSGTKEGMVNIWDLTTATLLHQT SCHSGTVCDAAF SPDSRHILSTGVDGCLNVIDVQTG  
 MLISSMASEEPQRCFVWDGNSVLSGSRSGELLVWDL LGAKVSERIQGHTGAVTCMMWNEQCSSIITGGED  
 RQIMFWKLQY

TRTRPLEQKLISEEDLAANDILDYKDDDDKV

Restriction Sites: SgfI-MluI

Cloning Scheme:

Cloning sites used for ORF Shuttling:



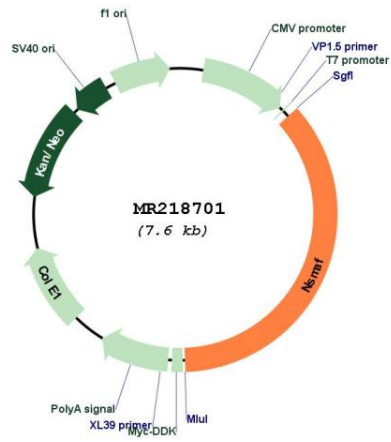
\* The last codon before the Stop codon of the ORF

ACCN: NM\_010945

ORF Size: 2763 bp

<b>OTI Disclaimer:</b>	The molecular sequence of this clone aligns with the gene accession number as a point of reference only. However, individual transcript sequences of the same gene can differ through naturally occurring variations (e.g. polymorphisms), each with its own valid existence. This clone is substantially in agreement with the reference, but a complete review of all prevailing variants is recommended prior to use. <a href="#">More info</a>
<b>OTI Annotation:</b>	This clone was engineered to express the complete ORF with an expression tag. Expression varies depending on the nature of the gene.
<b>Components:</b>	The ORF clone is ion-exchange column purified and shipped in a 2D barcoded Matrix tube containing 10ug of transfection-ready, dried plasmid DNA (reconstitute with 100 ul of water).
<b>Reconstitution Method:</b>	<ol style="list-style-type: none"><li>1. Centrifuge at 5,000xg for 5min.</li><li>2. Carefully open the tube and add 100ul of sterile water to dissolve the DNA.</li><li>3. Close the tube and incubate for 10 minutes at room temperature.</li><li>4. Briefly vortex the tube and then do a quick spin (less than 5000xg) to concentrate the liquid at the bottom.</li><li>5. Store the suspended plasmid at -20°C. The DNA is stable for at least one year from date of shipping when stored at -20°C.</li></ol>
<b>RefSeq:</b>	<a href="#">NM_010945.2</a> , <a href="#">NP_035075.2</a>
<b>RefSeq Size:</b>	3518 bp
<b>RefSeq ORF:</b>	2763 bp
<b>Locus ID:</b>	18201
<b>UniProt ID:</b>	<a href="#">O35242</a>
<b>Cytogenetics:</b>	4 A1
<b>MW:</b>	104.5 kDa
<b>Gene Summary:</b>	Couples the p55 TNF-receptor (TNF-R55 / TNFR1) to neutral sphingomyelinase (N-SMASE). Specifically binds to the N-smase activation domain of TNF-R55. May regulate ceramide production by N-SMASE.[UniProtKB/Swiss-Prot Function]

Product images:



Circular map for MR218701