

## Product datasheet for **MR218680**

### Arhgap6 (NM\_178754) Mouse Tagged ORF Clone

#### Product data:

Product Type:	Expression Plasmids
Product Name:	Arhgap6 (NM_178754) Mouse Tagged ORF Clone
Tag:	Myc-DDK
Symbol:	Arhgap6
Synonyms:	A1504284; RhoGAPX-1
Mammalian Cell Selection:	Neomycin
Vector:	pCMV6-Entry (PS100001)
E. coli Selection:	Kanamycin (25 ug/mL)



[View online »](#)

**ORF Nucleotide Sequence:**

>MR218680 representing NM\_178754  
 Red=Cloning site Blue=ORF Green=Tags(s)

TTTTGTAATACGACTCACTATAGGGCGGCCGGGAATTCGTGACTGGATCCGGTACCGAGGAGATCTGCC  
 GCC**CGGATCGCC**

ATGGGGGACCCGCTCTACAGCGAGAAACCCGCTGCTGACTACGCGGGTGACTTCACCTGGAACAGCATGT  
 CTGGTCGTAGCGTGCCTGAGGTCAGTCCCATCCAGAGCCTCTCAGAGCTGGAGCGGGCACGACTGCA  
 GGAAGTGGCTTTTATCAGTTGCAGCAGGACTGTGACCTGGGCTGTGAGATCACCATCCCCAAAGATGGA  
 CAAAAGAGAAAGAAATCTTTGAGAAAGAACTGGATTCACTAGGGAAGGAAAAGAACAAGACAAAGAAT  
 TCATCCCACAGGCATTTGGAATGCCCTTATCCCAAGTCATTGCTAATGACCGGGCATATAAACTGAAGCA  
 AGACTTGAGAGGGAGGAGCAGAAGGATGCATCATCGATTTTGTGTCTCCCTCTCCATTTGGGAAT  
 AAAAAACAAAACAAGAACTCTCAAGCAGTAACATCTCTCAGCTCAACCTCAGAAACACCAAATGAGT  
 CTACATCACCGAATACTCCAGAACCAGTCTCGGGCCAGGAGAAGGGGCCATGTCCGTGGATCCAT  
 CACTGATCTGGATGACAACCAGTCTGACTCCTAGAAGCTTTACAACCTCTCTTGCTGCTGAGGCTCAG  
 AGTAAAAAAGAAAAGGCCAGAGATAAGAAGCTGAGTCTGAATCCTATTTACAGGCAGTCCCAGGCTGG  
 TGGACAGCTGCTGTCAACATCTGAAAAACATGGCCTCCAGACAGTGGGGATATCCGAGTTGGAAGCTC  
 AAAGAAGAGAGTAAGACAATTGCGTGAAGAATTTGACCGTGGGGTTGATGTCTGTCTGGAAGAGGAGCAT  
 AGTGTTCACGATGTGGCAGCCTTGTAAAGGAGTTCCTTAGAGACATGCCTGACCCCTTCTCACAAGGG  
 AGCTATACACTGCATTTATCAACTCTCTGTGGAGCCTGAGGAACAACCTGGGCACCTTGCAACTCCT  
 CATTTACCTTCTACCTCCCTGCAACTGCGACACCTCCACCGCCTCTACAGTTCCTCTCCATTGTGGCC  
 AGGCATGCTGATGATAATGTGAGCAAGATGGACAAGAGGTTACTGGGAACAAAATGACATCTCTGAAC  
 TAGCCATATATTTGGACCAACCTGCTCCACAAGCAGAAGTCATCAGACAAAGAATATTCTGTTGAGAG  
 CTCAGCCAGAGCTGAGGAGAGCACAGCCATCATAGCTGTGGTACAGAAGATGATTGAAAATTATGAAGCC  
 TTGTTGATGGTTCCCCAGATCTCCAGAATGAAGTGTGATCAGCCTTCTAGAGACAGATCCAGATGTTG  
 TGGACTACTTGCTCAGAAGAAAGGCTTCCCAATCCTCGAGCCCTGACATACTTCAGACGGAAGTTTCCTT  
 TTCCATGGGAGGGAGGCATTCTACAGATTCCAACAAAGCCTCCAGTGGAGACATCTCCCTTATGAC  
 AACAACTCCCCAGTATTGTCTGAGCGCTCCCTGCTGGCTATGCAAGAGGACAGGGCCCGGGGGGCTCGG  
 AGAAGCTTTATAAAGTGCCAGAGCAGTATACACTGGTGGGCCACTTGTGATCGCCAAAGTCAAAGTCAAG  
 AGAAAGTTCTCCTGGACCAAGGCTTGGAAAAGAAATGTCAGAGGAGCCTTCAATATCTGGGGAAGTTGG  
 CATTCAACATTAAGTGGATCCAAGACCCAGGAATGACAGGCTCTTATGGCGACATTTTGAAGCA  
 GCTCCCTCCGACCGAGGCTTGTCTCTTCTCAAGGAACTTTCCCTGAACTGGCCTCGGTGTCAAGG  
 GAGCCCGACAGGGCTGGACAGTGGCACTCAGGTAATTCGGAGGACTCAGACGGCGGCCACCGTGGAGCAG  
 TGCAGTGTCCACCTTCCGGTGTGACGTGTCTGCAGCACTCCCCACATCCAGGACGGCAGCAGGGGACCA  
 GGCGGCTGCAGCCAGCTCTGATCCATTTTGTCCCTAAACAGCACAGAAGATCTAGCTGAGGGCAAGGA  
 GGATGTTGCCTGGCTGCAAAGCCAGGCCGACCTGTGTACCAGAGACCTCAGGAGAGTGGAAAAGATGAC  
 AGGCGCCCCCTCCTCTTACCCGGGTGAGGGAAGCCTGCCACAACCTTGCCAGCTGCCACTAGAGC  
 CTCCCCGTGGAGGCTCCAGAGGCATGAAGAAGGTTGAGAAACAGCTGTGGAAGGAGGCCAGCAGGCCTC  
 AGGGGAGCATCAGACCAGGCCAAAAAACTGAGCAGCGCCTACTCCCTCTCAGCCAGCAGCAGGACAAA  
 CAGAAGTTAGGGGAAGCCAGCTGGCTCGACTGGCAGCGAGAGCGGTGGCAGATCTGGGAGCTTCTATCAA  
 CTGATAACCCCGACGCCCTCCGGAAACCTAGTA

**ACGCGT**ACGCGGCCGCTCGAGCAGAACTCATCTCAGAAGAGGATCTGGCAGCAATGATATCCTGGATT  
 ACAAGGATGACGACGATAAGGTTTAA

**Protein Sequence:** >MR218680 representing NM\_178754  
 Red=Cloning site Green=Tags(s)

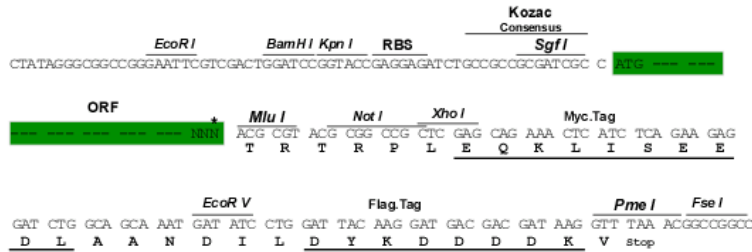
MGDPSYSEKPRLLHYAGDFTWNSMGRSVRLRSVPIQSLSELERARLQEVAFYQLQQDCDLGCQITIPKDG  
 QKRKSLRKKLDSL GKEKNKDKEFIPQAFGMPLSQVIANDRAYKLLKQDLQREEQKDASSDFVSSLLPFGN  
 KKQNKELSSSNSSLSTSETPNESTSPNTPEPAPRARRRGAMSVDSITDLDDNQSRLLLEALQLSLPAEAQ  
 SKKEKARDKKLSLNPIYRQVPRLVDSCCQHLEKHGLQTVGIFRVGSSKKRVRQLREEFDRGVVDCLEEEH  
 SVHDVAALLKEFLRDMPPDLLTRELTYAFINTLLLEPEEQLGTLQLLIYLLPPCNCDTLHRLQLFLSIVA  
 RHADDNVSKDGQEVGTGNKMTSLNLATIFGPNLLHKQKSSDKEYSVQSSARAEESTAIIVVQKMIENYEA  
 LFMVPPDLQNEVLISLLETDPDVVDYLLRRKASQSSSPDILQTEVSFSMGRHSSTDSNKASSGDISPYD  
 NNSPVLSERSLLAMQEDRARGGSEKLYKVPEQYTLVGHLSPPKSKSRESSPGPRLGKEMSEEPFNIWGTW  
 HSTLKSQKDPGKMTGSYGDIFESSLRPRPCSLSQGNLSLNWPRCQGSPTGLDSGTQVIRRTQTAATVEQ  
 CSVHLPVSRVCSTPHIQDGSRGTRRPAASSDPFLSLNSTEDLAEGKEDVAWLQSQARPVYQRPQESGKDD  
 RRRPPPPYPGSGKPATTSACLPLEPPLWRLQRHEEGSETAVEGGQQASGEHQTRPKKLSAYSLSASEQDK  
 QNLGEASWLDWQRERWQIWELLSTDNDALPETLV

TRTRPLEQKLISEEDLAANDILDYKDDDDKV

**Restriction Sites:** Sgfl-MluI

**Cloning Scheme:**

Cloning sites used for ORF Shutting:



\* The last codon before the Stop codon of the ORF

**ACCN:** NM\_178754

**ORF Size:** 2415 bp

**OTI Disclaimer:** The molecular sequence of this clone aligns with the gene accession number as a point of reference only. However, individual transcript sequences of the same gene can differ through naturally occurring variations (e.g. polymorphisms), each with its own valid existence. This clone is substantially in agreement with the reference, but a complete review of all prevailing variants is recommended prior to use. [More info](#)
**OTI Annotation:** This clone was engineered to express the complete ORF with an expression tag. Expression varies depending on the nature of the gene.

**Components:** The ORF clone is ion-exchange column purified and shipped in a 2D barcoded Matrix tube containing 10ug of transfection-ready, dried plasmid DNA (reconstitute with 100 ul of water).

**Reconstitution Method:**

1. Centrifuge at 5,000xg for 5min.
2. Carefully open the tube and add 100ul of sterile water to dissolve the DNA.
3. Close the tube and incubate for 10 minutes at room temperature.
4. Briefly vortex the tube and then do a quick spin (less than 5000xg) to concentrate the liquid at the bottom.
5. Store the suspended plasmid at -20°C. The DNA is stable for at least one year from date of shipping when stored at -20°C.

**RefSeq:** [NM\\_178754.3](#), [NP\\_848869.1](#)

**RefSeq Size:** 4035 bp

**RefSeq ORF:** 2418 bp

**Locus ID:** 11856

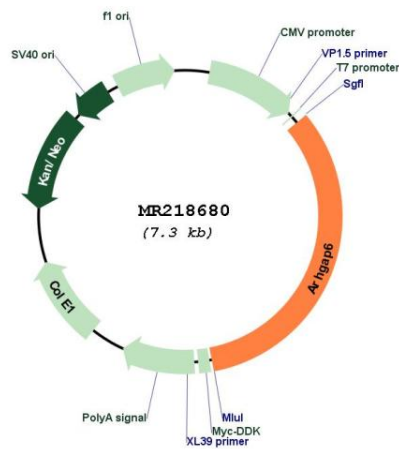
**UniProt ID:** [O54834](#)

**Cytogenetics:** X F5

**MW:** 90.2 kDa

**Gene Summary:** GTPase activator for the Rho-type GTPases by converting them to an inactive GDP-bound state. Could regulate the interactions of signaling molecules with the actin cytoskeleton. Promotes continuous elongation of cytoplasmic processes during cell motility and simultaneous retraction of the cell body changing the cell morphology (By similarity). [UniProtKB/Swiss-Prot Function]

### Product images:



Circular map for MR218680