

Product datasheet for **MR218641**

Trim65 (NM_178802) Mouse Tagged ORF Clone

Product data:

Product Type:	Expression Plasmids
Product Name:	Trim65 (NM_178802) Mouse Tagged ORF Clone
Tag:	Myc-DDK
Symbol:	Trim65
Synonyms:	4732463G12Rik
Vector:	pCMV6-Entry (PS100001)
E. coli Selection:	Kanamycin (25 ug/mL)
Cell Selection:	Neomycin



[View online »](#)

ORF Nucleotide Sequence:

>MR218641 representing NM_178802
 Red=Cloning site Blue=ORF Green=Tags(s)

TTTTGTAATACGACTCACTATAGGGCGGCCGGAATTCGTCGACTGGATCCGGTACCGAGGAGATCTGCC
 GCC**CGGATCGCC**

ATGGCCGCTCAGTTGCTGGAGGAGACGTGGTGACTTGTCCATCTGCTTAGTTCGCTACCGGGACCCGG
 TGACGCTGCCCTGCGGGCACAGCTTCTGCGGGAAGTGCATCCAGGATTCATGGCGTTCTCGGAAAAGTC
 GTGTCCGGAATGTCGCCAGCCCTTCCCCAGGGCGCCAAGCTGTCCCGCAACGTGAAGATGAGCACCTTG
 CTGACAGCGCTGCCCGTTCTGCCGGCGCCGCCCGGTGACTCCGCGCCGGGACTCCGCCACAAGCCACA
 GCGCTCGTGCCTGCGCCACGGGAGGCCGCTCGAGTTCTTGTGTCGACGGAGGGCTCTGCGTGTGACG
 CGCGTGCACGGTGCACGACTGCAGCCACCAGAGCGGGCGCTGCTGGACGTGGAGCGCCGCTGCGCGAG
 GACCAGCTGAGAGCGAGGGTACTGGTTACCCAGCAGCAGTTGCCAGGCAGAGACCCAGCTTCAGGAGC
 TGCAGGAGCAACGCAGTCGGATTGAGAGTTCAGCCTGCACCCTGGCTCGGTGGTCTCCAGGAGATTCAG
 TAGCCTGTTCAGGCGCTGGAGAAGCAGCAGGCCCTCAACTGAGTGATATAGAGGTAGCCAAGAAGCAG
 GCGCTGGGCCAAGTTCTGAATGAGAAAACAGCGGCTGACTGACCACCTAAGGGCCCTGTCTCAGTATGATC
 AGAGTGTCCAGGATTCCTGGCACAGGCGGATGACTGCATCTTCTCCAGGAATTACAGCAGCTCCCTGA
 GCCACAGAGTCCCTCGGGCCACTGACCTCTCCACAGTGAATGAAGAACAGCAGCTGAGCAACGTGAAC
 CAGCTGCTTAGCCCCCTGTGTGAGCTCCTCCTTGAAGAGAAGAGCCTCCCCAAGGTGGCAGCCAAGGCTG
 CAGATGCTGGCCCTTTGGAGACCCTGGTCCCCGGCACCAAGTCCCAGCGCAGTGTGTCCACTGAGGAA
 GAAGCTCTGGCAGAATTATCGAATCTGACCTTTGACCCAGAGACCGCCAACAGTATTTGCACTTGTCT
 CACAAGGACCAGCGGGTGACACACCATTCCAGGCCAGGGCCAGCCAAGTCGGGCAGCTTCGAGCTGT
 GGCAGGTGCAGTGTACCCAGAGTTTTCAGACTGGACAACATTACTGGGAGGTACGTGTCTGTGACTACTC
 TGTCACTCTGGGCGTCACCTACCCAAAGCTATCACGCCAAAAGCTGGGGACCCACACGGATAACATCGGC
 CGTGGACCCTGCTCCTGGGGCCTCTGCATCCAGGAGGACAGTATGCAGGCCTGGCACAATGGCAAATCTC
 AGCGCCTGCGTGGATTGCCCGGACAACCTCTGGGCGTAGATTTGAACTTGACCTCTGGTGCCTCACCTT
 CTACAGCCTGGAGCCACGCACACAGCCGCTGCACACTTCTATGCAGTGTTCAGCCAGCCTCTCTCCCT
 GTCTTCTGGTCTTGGGGGAGGACCCTTACTCTGTGCCATCAGCCTGAGGCCACGCTCCCTGCAAGGC
 CCCAGGAAGAGGCCACAGCACCCAGC

ACGCGTACGCGGCCGCTCGAGCAGAACTCATCTCAGAAGAGGATCTGGCAGCAAATGATATCTGGATT
 ACAAGGATGACGACGATAAGGTTTAA

Protein Sequence:

>MR218641 representing NM_178802
 Red=Cloning site Green=Tags(s)

MAAQLLEEDVVTCSICLGRYRDPVTLPCGHSFCGNCIQDSWRSCEKSCPECRQPFPEGAKLSRNVMSTL
 LQALPVLPAVTPRRDSATSHSARCLRHGRPLEFFCRTEGLCVCSACTVHDCSHHERALLDVERRVRE
 DQLRARVLVTQQVAQAETQLQELQEQRSRIESSACTLASVVSRRFSSLLQALEKQASTLSDIEVAKKQ
 ALGQVLNEKQRLTDHLRALSQYDQSVQDLLAQADDCIFFQELQLPEPTESLGPLTSPQWNEEQQLSNVN
 QLLSPLCELLLEEKSLPKVAAKAADAGPLETLGPLAPVPSAVCPLRKKLWQNYRNLTFDPETANQYLHLS
 HKDQRVTHHFQAQGPAKSGSFELWQVQCTQSFQTGQHYWEVRSVSDHVSVTLGVYTPKLSRQKLGHTDNIG
 RGPCSWGLCIQEDSMQAWHNGKSQRLRGLPGQLLGVLDLNLTSGLTFYSLEPRTQLHTFYAVFSQPLFP
 VFWLLEGRRTLTLCHQPEATLPAQPQEEATAPS

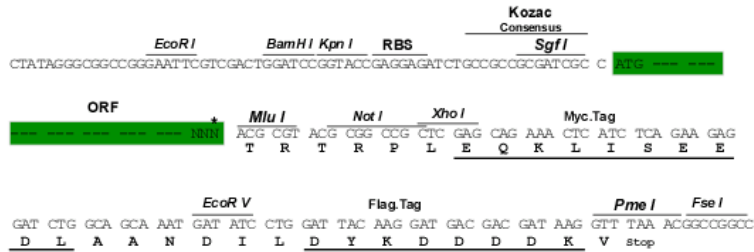
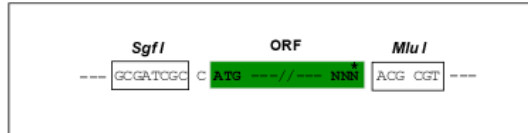
TRTRPLEQKLISEEDLAANDILDYKDDDDKV

Restriction Sites:

SgfI-MluI

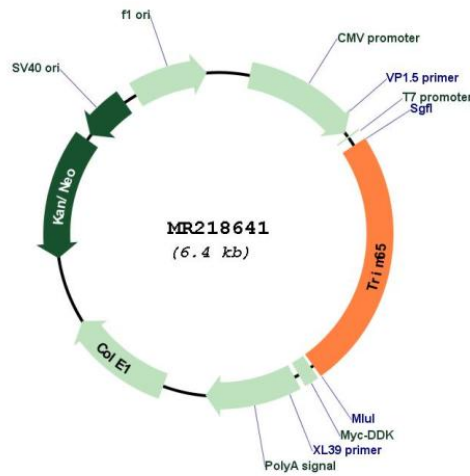
Cloning Scheme:

Cloning sites used for ORF Shuttling:



* The last codon before the Stop codon of the ORF

Plasmid Map:



ACCN:	NM_178802
ORF Size:	1566 bp
OTI Disclaimer:	<p>Due to the inherent nature of this plasmid, standard methods to replicate additional amounts of DNA in E. coli are highly likely to result in mutations and/or rearrangements. Therefore, OriGene does not guarantee the capability to replicate this plasmid DNA. Additional amounts of DNA can be purchased from OriGene with batch-specific, full-sequence verification at a reduced cost. Please contact our customer care team at custsupport@origene.com or by calling 301.340.3188 option 3 for pricing and delivery.</p> <p>The molecular sequence of this clone aligns with the gene accession number as a point of reference only. However, individual transcript sequences of the same gene can differ through naturally occurring variations (e.g. polymorphisms), each with its own valid existence. This clone is substantially in agreement with the reference, but a complete review of all prevailing variants is recommended prior to use. More info</p>
OTI Annotation:	This clone was engineered to express the complete ORF with an expression tag. Expression varies depending on the nature of the gene.
Components:	The ORF clone is ion-exchange column purified and shipped in a 2D barcoded Matrix tube containing 10ug of transfection-ready, dried plasmid DNA (reconstitute with 100 ul of water).
Reconstitution Method:	<ol style="list-style-type: none"> 1. Centrifuge at 5,000xg for 5min. 2. Carefully open the tube and add 100ul of sterile water to dissolve the DNA. 3. Close the tube and incubate for 10 minutes at room temperature. 4. Briefly vortex the tube and then do a quick spin (less than 5000xg) to concentrate the liquid at the bottom. 5. Store the suspended plasmid at -20°C. The DNA is stable for at least one year from date of shipping when stored at -20°C.
RefSeq:	<u>NM_178802.4, NP_848917.2</u>
RefSeq Size:	3050 bp
RefSeq ORF:	1569 bp
Locus ID:	338364
UniProt ID:	<u>Q8BFW4</u>
Cytogenetics:	11 E2
MW:	58.9 kDa