

## Product datasheet for **MR218621**

### **Rspo3 (NM\_028351) Mouse Tagged ORF Clone**

#### Product data:

**Product Type:** Expression Plasmids  
**Product Name:** Rspo3 (NM\_028351) Mouse Tagged ORF Clone  
**Tag:** Myc-DDK  
**Symbol:** Rspo3  
**Synonyms:** 2810459H04Rik; AW742308; Cristin1; Thsd2  
**Mammalian Cell Selection:** Neomycin  
**Vector:** pCMV6-Entry (PS100001)  
**E. coli Selection:** Kanamycin (25 ug/mL)  
**ORF Nucleotide Sequence:** >MR218621 representing NM\_028351  
**Red=Cloning site Blue=ORF Green=Tags(s)**

TTTTGTAATACGACTCACTATAGGGCGGCCGGAATTCGTCGACTGGATCCGGTACCGAGGAGATCTGCC  
GCC**CGATCGCC**

ATGCACTTGCAGCTGATTTCTTGTTTTTTATCATTTTGAACTTTATGGAATACATTGGCAGCCAAAACG  
CCTCCCGAGGAAGGCGCCAGCGAAGAATGCATCCTAATGTCAGTCAAGGCTGCCAAGGAGGCTGTGCAAC  
GTGTTTCAGATTACAATGGCTGTTTGTTCATGTAAGCCAGACTGTTTTTGTCTGGAAAGGATTGGCATG  
AAGCAGATAGGAGTGTGCTCTCTTCGTGTCCAAGTGGATATTACGGAACCTCGATATCCAGATATAAATA  
AATGTACAAAATGCAAAGTTGACTGTGATACCTGTTTCAACAAAATTTCTGCACAAAGTGTAAAAGTGG  
ATTTTACTTACACCTTGGAAAGTGCCTTGACAGTTGCCAGAGGGTTAGAAGCCAAACAATCATACTATG  
GAATGTGTCAGTATTGTACACTGTGAGGCCAGTGAATGGAGTCCATGGAGTCCATGTATGAAGAAAGGAA  
AAACATGTGGCTTCAAAAGGGGACTGAAACACGGGTCCGAGATATACTACAGCATCCTTCAGCCAAAGGG  
TAACCTGTGCCCCCAACCAGCGAGACAAGAACTTGTATAGTACAAAGAAAGAAAGTGTTCAAAGGGAGAG  
CGAGGAAAAAGGGAAGAGAGAGAAAACGAAAAAACTGAATAAAGAAAGAAAGAAAGAAACAAGCTCCT  
CCTCTGACAGCAAAGTTGGAGTCCAGCATTGAGACCCAGACCAGCAGGAAAAACAAAGAGGCGCAGCA  
GCAGCAGAAGAGAAGAGCCCGAGACAAGCAACAGAAATCGGTATCAGTCAGCACTGTACAC

**ACGCGT**ACGCGGCCGCTCGAGCAGAACTCATCTCAGAAGAGGATCTGGCAGCAAATGATATCCTGGATT  
ACAAGGATGACGACGATAAGGTTTAA



[View online »](#)

**Protein Sequence:** >MR218621 representing NM\_028351  
 Red=Cloning site Green=Tags(s)

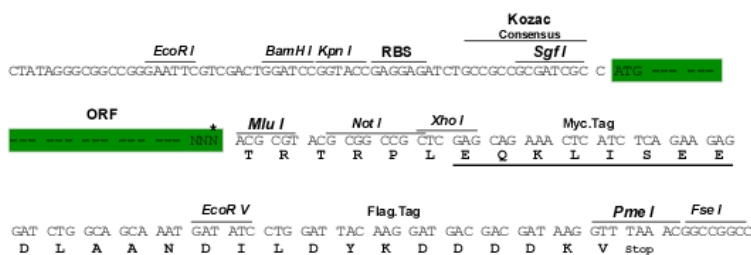
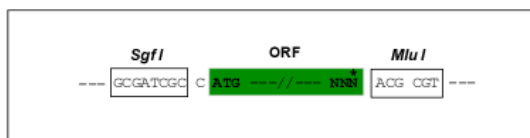
MHLRLISCFIILNFMEYIGSQNASRGRQRMRHPNVSQGCQGGCATCSDYNGCLSCKPRLFFVLERIGM  
 KQIGVCLSSPCSGYYGTRYPDINKCTKCKVDCDTCFNKNFCTKCKSGFYHLHGKCLDSCPEGLEANNHTM  
 ECVSIVHCEASEWSPWSPCMKKGKTCGFKRGTE TRVRDILQHPSAKGNLCPPTSETRTRCIVQRKKCSKGE  
 RGKKGRERKRKLNKEERKETSSSSDSKGLESSIETPDQQENKERQQQKRRARDKQQKSVSVSTVH

TRTRPLEQKLISEEDLAANDILDYKDDDDKV

**Restriction Sites:** SgfI-MluI

**Cloning Scheme:**

Cloning sites used for ORF Shuttling:



\* The last codon before the Stop codon of the ORF

**ACCN:** NM\_028351

**ORF Size:** 831 bp

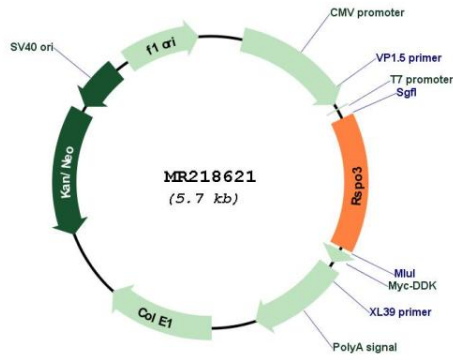
**OTI Disclaimer:** Due to the inherent nature of this plasmid, standard methods to replicate additional amounts of DNA in E. coli are highly likely to result in mutations and/or rearrangements. Therefore, OriGene does not guarantee the capability to replicate this plasmid DNA. Additional amounts of DNA can be purchased from OriGene with batch-specific, full-sequence verification at a reduced cost. Please contact our customer care team at [custsupport@origene.com](mailto:custsupport@origene.com) or by calling 301.340.3188 option 3 for pricing and delivery.

The molecular sequence of this clone aligns with the gene accession number as a point of reference only. However, individual transcript sequences of the same gene can differ through naturally occurring variations (e.g. polymorphisms), each with its own valid existence. This clone is substantially in agreement with the reference, but a complete review of all prevailing variants is recommended prior to use. [More info](#)

**OTI Annotation:** This clone was engineered to express the complete ORF with an expression tag. Expression varies depending on the nature of the gene.

<b>Components:</b>	The ORF clone is ion-exchange column purified and shipped in a 2D barcoded Matrix tube containing 10ug of transfection-ready, dried plasmid DNA (reconstitute with 100 ul of water).
<b>Reconstitution Method:</b>	<ol style="list-style-type: none"><li>1. Centrifuge at 5,000xg for 5min.</li><li>2. Carefully open the tube and add 100ul of sterile water to dissolve the DNA.</li><li>3. Close the tube and incubate for 10 minutes at room temperature.</li><li>4. Briefly vortex the tube and then do a quick spin (less than 5000xg) to concentrate the liquid at the bottom.</li><li>5. Store the suspended plasmid at -20°C. The DNA is stable for at least one year from date of shipping when stored at -20°C.</li></ol>
<b>RefSeq:</b>	<u><a href="#">NM_028351.3</a></u> , <u><a href="#">NP_082627.3</a></u>
<b>RefSeq Size:</b>	2411 bp
<b>RefSeq ORF:</b>	834 bp
<b>Locus ID:</b>	72780
<b>UniProt ID:</b>	<u><a href="#">Q2TJ95</a></u>
<b>Cytogenetics:</b>	10 A4
<b>MW:</b>	31.9 kDa
<b>Gene Summary:</b>	Activator of the canonical Wnt signaling pathway by acting as a ligand for LGR4-6 receptors, which acts as a key regulator of angiogenesis (PubMed:16543246, PubMed:21693646, PubMed:26766444). Upon binding to LGR4-6 (LGR4, LGR5 or LGR6), LGR4-6 associate with phosphorylated LRP6 and frizzled receptors that are activated by extracellular Wnt receptors, triggering the canonical Wnt signaling pathway to increase expression of target genes. Also regulates the canonical Wnt/beta-catenin-dependent pathway and non-canonical Wnt signaling by acting as an inhibitor of ZNRF3, an important regulator of the Wnt signaling pathway. Acts as a ligand for frizzled FZD8 and LRP6. May negatively regulate the TGF-beta pathway (PubMed:16543246, PubMed:21693646). Acts as a key regulator of angiogenesis by controlling vascular stability and pruning: acts by activating the non-canonical Wnt signaling pathway in endothelial cells (PubMed:26766444, PubMed:16543246, PubMed:21693646). Can also amplify Wnt signaling pathway independently of LGR4-6 receptors, possibly by acting as a direct antagonistic ligand to RNF43 and ZNRF3 (By similarity).[UniProtKB/Swiss-Prot Function]

Product images:



Circular map for MR218621