

Product datasheet for **MR218608**

Gemin5 (NM_172558) Mouse Tagged ORF Clone

Product data:

Product Type:	Expression Plasmids
Product Name:	Gemin5 (NM_172558) Mouse Tagged ORF Clone
Tag:	Myc-DDK
Symbol:	Gemin5
Synonyms:	AA407055; AA407208; AI451603; BB194447; C330013N08
Vector:	pCMV6-Entry (PS100001)
E. coli Selection:	Kanamycin (25 ug/mL)
Cell Selection:	Neomycin
ORF Nucleotide Sequence:	>MR218608 ORF sequence Red=Cloning site Blue=ORF Green=Tags(s)

TTTTGTAATACGACTCACTATAGGGCGCCGGGAATTCGTCGACTGGATCCGGTACCGAGGAGATCTGCC
GCC**GCGATCGCC**

ATGAAGCCGGAGCCGCGGACGCTGCCGCCGTCCCCAACTGGTACTGCTCAGCTGCAGCGACGCGGGCC
CCGGAGGCATCTTTGGCTTCGCTGCGCGGACCTCCGTCTTCTCGTCCGCGTGGTCCGGTCCGGGGCC
GAGCCCAGGGGCGCCCCGTTTCGAGTGGTAGGAGAGTTGGTGGGACACACTGAAAGAGTATCTGGTTTC
ACTTTTTCTCATACCCTGGACAATACAACCTCTGTGCCACCAGCTCAGACGATGGAAGTGAAGGTTT
GGGATGTAGAGACCAAGACTGTAGTGACAGAACACACTCCATCAGCATAACAATATCAGCACTGCATTG
GTCTCCGACAGTTAAGGACTTAATAGTCTCTGGGGATGAAAAGGAGTCGTTTTCTGTTACTGGCTTAAC
AGAAATGACAGCCAGCACCTCTTACAGAGCCAGGACCATATTCGTCTGACGTGTTACCTCATCACG
AAAATCTAGTAGCCATTGGCTACAAAGATGGCATAGTGGTTATCATTGACATCAGTAAAAGGGAGAAGT
TATTCACAGACTTCGAGGCCACGATGACGAGATCCACTCCATAGCCTGGTGTCTCTGTCTGGTGAAGAC
TGCTTATCCATCAGCCAAGAGGAAAACCGAAGAACCTGACATTCCCAATGGGAAGCTTATAGCAGAAA
CCCCATCACAAAAGGCTGCTACTTAGCCACAGGAAGCAAGATCAGACCATTGGAATCTGGAGCTGTTT
CCGCGGCCGGGTGTAATGGTTTTGAAATTGCCCTTCTGAAGAGAAGAAGTGGGGGTGGACCCAACA
GTTAAAGAACGGCTTTGGTTGACACTTCATTGGCCTAAGAACCAACCAACACAGCTGGTATCCAGTTGTT
TTGGAGGTGAGCTGCTGCTATGGGACCTCACCCAGTCATGGAGGCGGAAGTACACGCTCTTCAGCACCTC
AGCAGAAGGGCACAATCATTCCAGAATTGTCTTCAATCTGTGTTCTCTGAAGACTGAAGATGGCAAGCAG
CTGCTACTGTCCACATCCATGGATAGAGATGTAATAATGTTGGGACATGGCCACCCTGGAGTGTGCTGGA
CATTGCCCTTCTTGGAGTTTTGCCTACAGCCTGGCCTTTTCTCTGTGGACGTGGGCTCCCTGGCCAT
AGGTGTTGGGGACGGCATGATCCGGGTGTGGAATACACTCTCCATAAAGAACAACACGACGTGAAAAAC
TTCTGGCAAGGAGTCAAGTCCAAGGTCACAGCGCTATGCTGGCACCAACAAGGAAGGCTGCTTAGCCT
TCGGGACCAGTACGGAAAAGTGGGATTGTATGACACCTGCTCCAACAAACCTCCACAGATTTCAAGCAC
GTATCATAAGAAGACCGTGTATAGGTTGGCTTGGGGGCCACCAGTCCCCCATGTCACTTGGAGGGGAA
GGAGACAGGCCTCCCTCACCTGTACAGCTGTGGAGGGGAAGCGTGTGTCTACAGCATAACCCCTGGA



AGCTCAGTGGAGAGGCCCTTCGACATCAACAACTCGTGAGGGACACCAACTCCATTAGATACAACTGCC
CGTGCACACAGAGATCAGCTGGAAGGAGATGGCAAAGTCCTGGCTCTTGGGAATGAAGATGGATCAATA
GAAATATTCAAAGTCCCCAATTGAGGCTGCTGTGCACCATCCAGCAGCACCACAAGCTTGTGAACGCCA
TAGTCTGGCACCATGAGCATGGCAGCCGTCCAGAGCTGAGCTGTCTCCTTGTCTTGGCTCCAACAATGC
AGTCATCTACGTGCACAACCTGAAAGCAGTCCTAGAAAGCAATCCTGAGTCTCCAATAACCATCACAGAG
CCCTACCGCACCCCTCTCGGGGCACACAGCCAAGATTACCAGTCTGGCATGGAGCCACATCATGACGGAA
GGCTGGTATCTGCTTGTACGATGGCAGCTCAGGTGTGGATGCCCTCCGGGAAGACCTTTGTTCAA
TTTCCGAGGACATCGAGGCCGGCTGCTATGTGTGCGGTGGTCCCAAGTGGATCCAGAATGCATCTACTCA
GGTGCAGATGACTTCTGTGTCTACAGGTGGCTGACTTCCATGCAGGACCATTCCCGGCTCCTCAAGGGA
AAAAATGTATTGAACTAGAGAAAAACGACTCTCTCAATTTAAGCCAAAGCTTAAAAAGAAGAAAAAC
TACCTTGCAGCTGCCTGTAAAGCAGGATTCATCCGTTGGCAATGAAGATGAGAGTGTAAAGGAGAACTCT
GGACCTGCTGAGAACGGCTTGTGCGACCAGGATGGTGAGGAGGAAGCCAGGAGCCAGAGCTGCCTCCCT
CTCCTGTAGTTTGTGTAGAACCTGTTTCTGTACTGACATTTGCTCAGGCTTTGAAAAGTCAAAGTAC
TGTTAGTAGCAAAGCCACCTCACTGAAAAAGGAGCCAGCTAAAGAGAAACCAGAAGCCTTGTCAAGAAG
AGGAAGGCTCGCTCCATGCTCCCTGAGCACCAGCTTAGACCACAGGTCAAAGAGGAGCTCCATCGAG
ACTGCTTGGTACTAGCAACTGCAACACAGGCCAAAGCAGAGCTAAATGAAGATGTGTCTGCCGACCTTGA
GGAACGATTCCACTTGGGCCTTTTACAGACAGGGCTACTCTATACAGGATGATGAAAACAGAAGGGAAA
GGTCACTTGGAAAGTGGCCACCCGAGCTTTTTACCAGCTCATGCTCTGGAAAGGAGATCTGAAGGGTG
TTCTCCAGGCTGCAGCAGAGAGAGGGCAGCTGACAGACAGTCTCGTGGCTGTGGCACCAGTGGCTGGCTA
CAGTGTATGGCTGTGGGCTGTGGAAGCCTTTGCCAAGCAGCTGTGTTCCAGGACCAGTACGTCAAGGCT
GCCTCTTATCTGCTATCCATCCACAAAGTGTACGAAGCTGTGGAACCTTCTCAAGTCAAACCATCTCTACA
GAGAAGCTATTGCAGTTGCCAAGGCTCGGCTGCGCCCTGAGGACCCTGTCTGAAGGAATATACCTCAG
CTGGGGGTCCATCCTGGAGAGAGATGGCCACTATGCTATTGAGCCAAGTGTACTTAGGAGCCACTTCC
GCCTATGATGCAGCCAAAGTTCTGGCCAGAAAGGAGATGCAGCCCTCACTTAGAAGAGCTGCAGAGCTGG
CTGCCATAGCAGGAGAACATGAGCTGGCTGCTTCCCTGGCTCTTAGATGTGCCAAGAGCTGCTTCTGAT
GAAGAAGTGGGTGGTGCACAAGAAGCATTGGGACTGCATGAAAGCCTGCAGGGCCAGAGACTGGTCTTC
TGCTCCTTGAACCTTCTATGCCGACCTGGAGGAAAAACAGCCTCTAGAGGTGAGAGGCCCTCTTCCA
TTTACCACAGTGGGCCACAGGTTCTGAGGGAACCTTGGTGCAGAGAGTAACCGGTGTGTGGCGCAGCGC
CTTCAGTGTGGACACCCCGAGCAGTGTGAGGCCCTTACAGAAGCTGCAGGATGTCAAGTACCCATCA
GCAACAAGTAACACTCCCTTACAGACAGCTGCTGCTTATGTCTGCCATGACCTGACCTTGGCAATGCTGA
GCCAGCAGGCTGCTGCCGGGAGGAGGAGTGCCTGCTGCTGCAGGCTGTGGTTCGGAGCTATACCTC
AGGGAAGTACCCCTCATGCAGGAAATCTACTAGCCTTTCTCCAGGTGGCTGTGACCCTACGAGAC
AACTGGGTGACCTCTCTCCTGCCATGGCAGCTTACAAAAGCTTAGAGGCCTTTTGTATTATGGGCAAC
TGATGAAGTCTGGTGGTCTGCTCGGGCCTGGCCCTGAGTCAAGCGTCTGGGTGTTGTGAGTGAAGG
CACGGTCTCTGATAAACAGAGCAAGCCAGAGGACAGTGCAGTGTGAGGACATGGAACAGCCTCCAGGC
CCGGGCCCGAGGCTCAGTGCAGAGAGTGAAGCTTGTGAGTGCCTGCAAGGAGCTTTTCTCAGAACGGC
ATGCCAGCCTGCAGACCTCCAGAGGACTGTAGCCGAAGTCCAAGAGACTGGCAGAAATGATCCGCCA
GCACAAAAGAGTCAAGCTCTGCAAGGCCACAACAAATGGTCCCAGCAGAGATGAACCCAGCAGAGATGAA
CCCAGCCAGGAAGCAGAGCGGGCTCCTTCTCAGCCTCCGAGCCCAACAGAAGAAAGAAATGCACCATGT
CTCTCCCTGAACTAACCAAGGCTCACAGAGGCAATGAGAGGATAGCAGAGTTTCCAGAGAGTGTAAA
GGCCTGGCCCTTCCAGATGTGCTGGAGTGTGCTCGTCTTGTCTCACATTGGGTCCCAGTGTCTGAC
GCTGTGGACCCTGAGATGCAGCAACAGGCCAGGAGCTCCTTACAAGTATGGGCACACTCGAGCTTACA
GAAGACACTGCCAGAGTCGGCACAG

ACGCGTACGCGGCCGCTCGAGCAGAACTCATCTCAGAAGAGGATCTGGCAGCAATGATATCCTGGATT
ACAAGGATGACGACGATAAGGTTTAA

Protein Sequence:

>MR218608 protein sequence
 Red=Cloning site Green=Tags(s)

```

MKPEPRTLPPSPNWCYCSRCSAAPGGIFGFAARTSVFLVRVGPAGASPGAPPFRVVGELVGHTERVSGF
TFSHHPGQYNLCATSSDDGTVKVWDVETKTVVTEHTLHQHTISALHWSPTVKDLIVSGDEKGVVFCYWLK
RNDSQLHFTPEPTIFCLTCSPHHENLVAIGYKDGIVVIIDISKKGEVIHRLRGHDDEIHSIAWCPLSGED
CLLSISQEENSEEPPDIPNGKLI AETPITKGCYLATGSKDQTI RIWCSRGRGVMVLKLPFLKRRSGGVDPT
VKERLWLT LHWPKNQPTQLVSSCFGGELLWDLTQSWRRKYTLFSTSAEGHNHSRI VFNLC SLKTEDGKQ
LLLSTSMDRDVKCWDMALECCWTLPSLGGFAYSLAFSPVDVGS LAIGVGDGMIRVWNTLSIKNNYDVKN
FWQGVKSKVTALCWHPNKEGCLAFGTDDGKVL YDTC SNKPPQISSTYHKKTVYRLAWGPPVPPMSLGGE
GDRPSL TLYSCGGEVVLQHNPWKL SGEAFDINKLVRDTNSIRYKLPVHTEISWKGDGKVLALGNEDGSI
EIFQVPNLRL LCTIQQHKL VNAIVWHHEHGRPEL SCLLASGSNNAVIYVHNLKAVLESNPESITITE
PYRTL SGHTAKITSLAWSPHHDGRLVSAC YDGT AQVWDALREPLFNFRGHRGRLLCVAWSPVDEPCIYS
GADDFCVYRWL TSMQDHSRPPQGGK CIELEKKRL SQFKPKLKKKKKPTLR LPPVKQDSSVGNEDSVKENS
GPAENGLSDQDGE EEAQEP ELPSPVVCVEPV SCTDICS GF EKSKVTVSSKATSLKKEPAKEKPEALLKK
RKARSMLPLSTSLDHR SKEELHRDCLVLATATHAKAELNEDVSADLEERFHLGLF TDRATLYRMMETEGK
GHLESGHP E L FHQLMLWKGDLKGV LQAAAERGELTDSL VAVAPVAGYSVWL WAVEAF AKQLCFDQDYVKA
ASYLLS I HKVYEA V ELLKSNHL YREAI AVAKARLRPEDPVLKEL YL SWGSIL ERDGHYA IAAKCYLGATS
AYDAAKVLARKGDAASLR TAAELAAIAGEHELAASLALRCAQELLLMKNWVGAQEALGLHESLQQQLVF
C LLELLCRHLEEKQPLEVRGPSS IYHQWATGSEGLVQRVTGVWRS AFSDVTPEQCQAALQKLQDVKYPS
ATSNT PFRQLLLHVCHDL TAML SQAAAWE EAVPALLQAVVRSYTSGNFTLMQE IYSAFLPGGCDHLRD
KLGDL SPAMAAYKSL EAFCIY GQLYEVWWSL CGPGPESSVWVLSAESTVSDKQSKPEDSASAEDMEQPPG
PGPRL SAESERLLSACKEL F SERHASLQTSRRTVAEVQETLAEMIRQH QKSQLCKATTNGPSRDEPSRDE
PSQEAERAPSQPPSPTEERNAPVSLPEL TRRL TEANERIAEF PESYKAWPFPDVLECC L VLLHIGSQCPD
AVDPEMQQAQELLHKYGHTRAYRRHCQSRHT
    
```

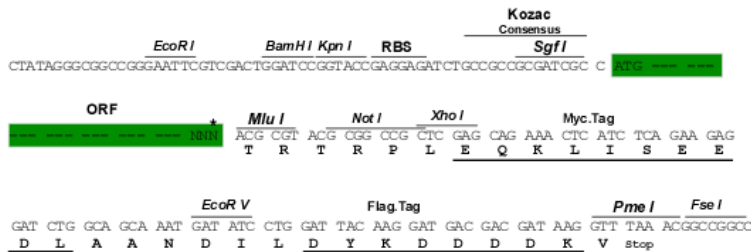
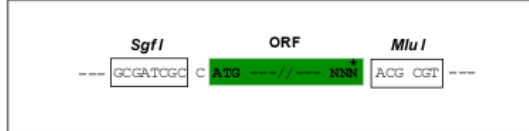
TRTRPLEQKLISEEDLAANDILDYKDDDDKV

Restriction Sites:

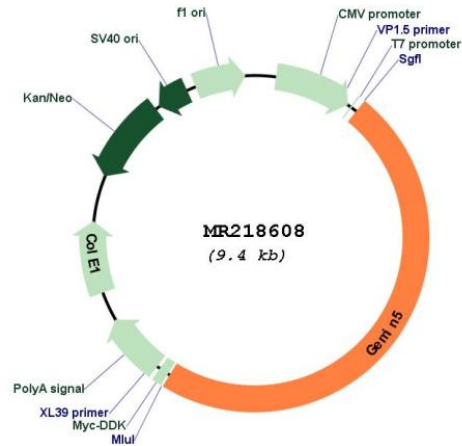
SgfI-MluI

Cloning Scheme:

Cloning sites used for ORF Shuttling:



* The last codon before the Stop codon of the ORF

Plasmid Map:


ACCN: NM_172558

ORF Size: 4506 bp

OTI Disclaimer: The molecular sequence of this clone aligns with the gene accession number as a point of reference only. However, individual transcript sequences of the same gene can differ through naturally occurring variations (e.g. polymorphisms), each with its own valid existence. This clone is substantially in agreement with the reference, but a complete review of all prevailing variants is recommended prior to use. [More info](#)

OTI Annotation: This clone was engineered to express the complete ORF with an expression tag. Expression varies depending on the nature of the gene.

Components: The ORF clone is ion-exchange column purified and shipped in a 2D barcoded Matrix tube containing 10ug of transfection-ready, dried plasmid DNA (reconstitute with 100 ul of water).

Reconstitution Method:	<ol style="list-style-type: none">1. Centrifuge at 5,000xg for 5min.2. Carefully open the tube and add 100ul of sterile water to dissolve the DNA.3. Close the tube and incubate for 10 minutes at room temperature.4. Briefly vortex the tube and then do a quick spin (less than 5000xg) to concentrate the liquid at the bottom.5. Store the suspended plasmid at -20°C. The DNA is stable for at least one year from date of shipping when stored at -20°C.
RefSeq Size:	6226 bp
RefSeq ORF:	4509 bp
Locus ID:	216766
UniProt ID:	Q8BX17
Cytogenetics:	11 B1.3
MW:	166.6 kDa
Gene Summary:	<p>Required for the assembly of the SMN complex that plays a catalyst role in the assembly of small nuclear ribonucleoproteins (snRNPs), the building blocks of the spliceosome. Thereby, plays an important role in the splicing of cellular pre-mRNAs. Most spliceosomal snRNPs contain a common set of Sm proteins SNRPB, SNRPD1, SNRPD2, SNRPD3, SNRPE, SNRPF and SNRPG that assemble in a heptameric protein ring on the Sm site of the small nuclear RNA to form the core snRNP. In the cytosol, the Sm proteins SNRPD1, SNRPD2, SNRPE, SNRPF and SNRPG are trapped in an inactive 6S pICln-Sm complex by the chaperone CLNS1A that controls the assembly of the core snRNP. Dissociation by the SMN complex of CLNS1A from the trapped Sm proteins and their transfer to an SMN-Sm complex triggers the assembly of core snRNPs and their transport to the nucleus. GEMIN5 acts as the snRNA-binding protein of the SMN complex. Binds to the 7-methylguanosine cap of RNA molecules (By similarity). Binds to the 3' UTR of SMN1 mRNA and regulates its translation; does not affect mRNA stability (PubMed:25911097). May play a role in the regulation of protein synthesis via its interaction with ribosomes (By similarity).[UniProtKB/Swiss-Prot Function]</p>