

## Product datasheet for **MR218554**

### Zp1 (NM\_009580) Mouse Tagged ORF Clone

#### Product data:

Product Type:	Expression Plasmids
Product Name:	Zp1 (NM_009580) Mouse Tagged ORF Clone
Tag:	Myc-DDK
Symbol:	Zp1
Mammalian Cell Selection:	Neomycin
Vector:	pCMV6-Entry (PS100001)
E. coli Selection:	Kanamycin (25 ug/mL)



[View online »](#)

**ORF Nucleotide Sequence:**

>MR218554 representing NM\_009580  
 Red=Cloning site Blue=ORF Green=Tags(s)

TTTTGTAATACGACTCACTATAGGGCGGCCGGGAATTCGTCGACTGGATCCGGTACCGAGGAGATCTGCC  
 GCC**CGCATCGCC**

ATGGCCTGGGTTGTTTTGTGGTCTGCTTCTGCTGGCGGCAGCTCCCCTGAGATTGGGTACAGCCTGCTG  
 ATCTCGAGCCTGGCTTTGAATACAGCTATGACTGTGGGTACGGGCATGCAGCTGCTGGTGTCCCTAG  
 GCCAAACCAGACTGTCCAATTCAAGGTGCTGGATGAATTTGGGAACCGTTTGAGGTGAATAACTGCTCT  
 ATCTGCTACCACTGGGTGACCAGTGAGGCCAGGAGCACACAGTATTCTCAGCTGATTACAAAGGCTGCC  
 ACGTTCTAGAGAAGGATGGGCGTTCCACCTGAGGGTGTTCATACAAGCCGTCCTACCCAATGGCCGTGT  
 GGATATAGCACAAGATGTACACTGATCTGTCCAAACCAGACCACCCGTGACTCCGGACCCTACCTG  
 GCTCCACCACACCTGAGCCTTTACACCTCATGCTTTGCCCTTACCCCCATCCCTGACCACCT  
 TGGCTGGGTCTGGCCACACTGGTCTCACTACGTTGTACCCAGAACAGAGCTTCATCCATCCAACCTCTGC  
 TCCGCCATCCCTAGGACCTGGACCTGCTGGATCCACTGTACCTCACTCCCAATGGGGCAGCTGGAGCCC  
 TGGGAATTGACTGAGCTGGATTCTGTAGGTACCATCTGCCCCAGGAGCGGTGCCAGGTAGCCTCCGGGC  
 ACATCCCATGCATGGTAAATGGAAGTTCCAAGGAAACCTGTCAGCAGGCTGGCTGCTGCTATGACAGTAC  
 CAAAGAAGAGCCCTGTTACTATGGCAACACAGTCACTCTCCAGTGTTTCAAAGTGGCTACTTTACCTTG  
 GTCATGTCACAAGAAACAGCCTTGACACATGGAGTCTGCTAGACAATGTCCACCTGGCCTATGCCCCCA  
 ACGGATGCCCCCTACCCAGAAGACAAGTGCTTTTGTGGTCTTCCATGTCCTCTCACCTCTGTGGAAC  
 AGCAATCCAGGTGGTCGGCAACAACCTCATCTATGAGAACCAGCTGGTGTCTGACATTGATGTCCAAAAG  
 GGGCCACAGGTTCCATCACTCGGACAGTGCCTCCGGCTTCATGTTGCTGCATCTTCAATGCTAGCC  
 ATTTCTGCCCATCCAGGCATCTATCTTCTCACCCCAACCACCTGCCCTGTGACTCAATCTGGACCCCT  
 GAGGCTGGAGCTGAGGATTGCCACGGATAAGACTTTTCAGCTCCTACTATCAGGGGAGTACTATCCCTT  
 GTGAGACTGCTCCGGGAACAGTCTATGTAGAGTCCGACTCCTGCAGAGAACTGATCCAGTCTGGTTC  
 TGGTGCTACACCAGTGTGGCCACGCCACCACCAGCCCTTTGAGCAGCCCAATGGCCTATTCTGTC  
 AGATGGGTGTCCTTTCAAGGGTGACAACACAGAACACAAGTAGTGGCCGACAGAGGGAGGCGCTTCCC  
 TTCTGGTCCCACTATCAGCGCTTACCATCACACCTTCATGCTCCTGACTCCAGCTCCAGAATGCC  
 TTAGGGGACAGGTCTATTTCTTGTAGTGCCTGCTGCCACCCTCTGGGTCTGATACATGCTCTAC  
 TACGTGTGACTCTGGGATAGCAAGGCGTCGACGATCCTCTGGTACCACAACATCACTCTCCGGGCCCTG  
 GATATTGTAAGCTCTCCAGGGCAGTGGGCTTTGAGGATGCTGCTAAACTTGAGCCCTCAGTTCCAGCA  
 GGAACCTCAGCTCAAGAATGCTGCTCCTGCTGCTGGCCATCACCTAGCCCTGGCGGCCGGATCTTTGT  
 GGGTCTGATCTGGCCTGGGCCAGAAGCTCTGGGAAGGCATCAGATAT

**ACGCGT**ACGCGGCCGCTCGAGCAGAACTCATCTCAGAAGAGGATCTGGCAGCAAATGATATCCTGGATT  
 ACAAGGATGACGACGATAAGGTTTAA

**Protein Sequence:**

>MR218554 representing NM\_009580  
 Red=Cloning site Green=Tags(s)

MAWGCFVLLLLAAAPLRLGQRLHLEPGFEYSYDCGVRGMQLLVFPRPNQTVQFKVLDEFGNRFVFNCS  
 ICYHWVTSEAQEHTVFSADYKGVLEKDRFHLRVFIQAVLPNGRVDIAQDVTLICPKPDHTVTPDPYL  
 APPTTPEPFTPHAFALHPIPDHTLAGSGHTGLTTLYPEQSF IHPTAPPPLSGPGPAGSTVPHSQWGTLEP  
 WELTELDVSGTHLPQERCQVASGHIPCMVNGSSKETCQQAGCCYDSTKEEPCYYGNTVTLQCFKSGYFTL  
 VMSQETALTHGVLLDNVHLAYAPNGCPPPTQKTSFVVFHVPLTLCGTAIQVVGQQLIYENQLVSDIDVQK  
 GPQGSITRDSAFRLHVRICIFNASDFLPIQASIFSPQPPAPVTQSGPLRLELRIATDKTFSSYYQGSYPL  
 VRLLREPYYVEVRLLQRTDPSLVVLHQCWATPTTSPFEQPQWPILSDGCPFKGDNYRTQVVAADREALP  
 FWSHYQRFITITFMLLDSSSQNALRGQVYFFCSASACHPLGSDTCTTCDSGIARRRRSSGHHNITLRAL  
 DIVSSPGAVGFEDA AKLEPSGSSRNSSRMLLLLLLAILALAAAGIFVGLIWAWAQKLWEGIRY

**TR**TRPLEQKLISEEDLAANDILDYKDDDDKV

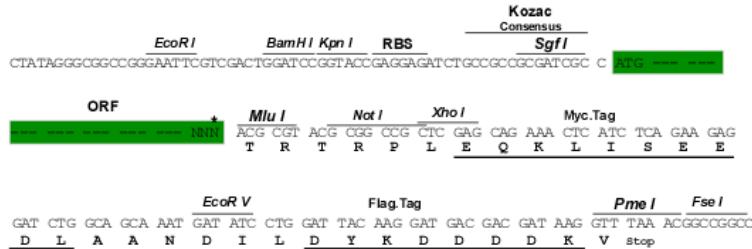
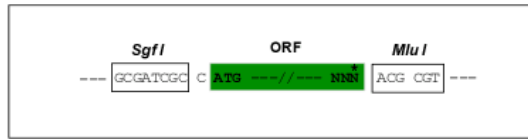
**Chromatograms:**

[https://cdn.origene.com/chromatograms/mm9014\\_d10.zip](https://cdn.origene.com/chromatograms/mm9014_d10.zip)

Restriction Sites: SgfI-MluI

Cloning Scheme:

Cloning sites used for ORF Shuttling:



\* The last codon before the Stop codon of the ORF

ACCN: NM\_009580

ORF Size: 1869 bp

OTI Disclaimer: The molecular sequence of this clone aligns with the gene accession number as a point of reference only. However, individual transcript sequences of the same gene can differ through naturally occurring variations (e.g. polymorphisms), each with its own valid existence. This clone is substantially in agreement with the reference, but a complete review of all prevailing variants is recommended prior to use. [More info](#)

OTI Annotation: This clone was engineered to express the complete ORF with an expression tag. Expression varies depending on the nature of the gene.

Components: The ORF clone is ion-exchange column purified and shipped in a 2D barcoded Matrix tube containing 10ug of transfection-ready, dried plasmid DNA (reconstitute with 100 ul of water).

Reconstitution Method:

1. Centrifuge at 5,000xg for 5min.
2. Carefully open the tube and add 100ul of sterile water to dissolve the DNA.
3. Close the tube and incubate for 10 minutes at room temperature.
4. Briefly vortex the tube and then do a quick spin (less than 5000xg) to concentrate the liquid at the bottom.
5. Store the suspended plasmid at -20°C. The DNA is stable for at least one year from date of shipping when stored at -20°C.

RefSeq: [NM\\_009580.2](#), [NP\\_033606.2](#)

RefSeq Size: 1925 bp

RefSeq ORF: 1872 bp

Locus ID: 22786

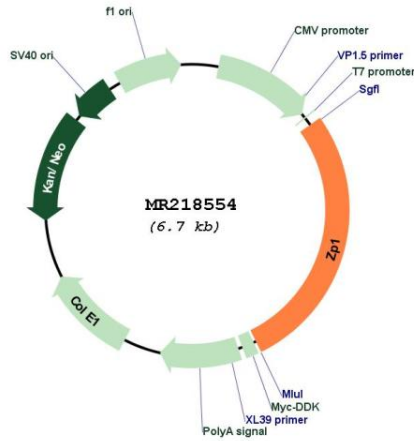
UniProt ID: [Q62005](#)

**Cytogenetics:** 19 7.36 cM

**MW:** 69.2 kDa

**Gene Summary:** The mammalian zona pellucida, which mediates species-specific sperm binding, induction of the acrosome reaction and prevents post-fertilization polyspermy, is composed of three to four glycoproteins, ZP1, ZP2, ZP3, and ZP4. ZP1 ensures the structural integrity of the zona pellucida.[UniProtKB/Swiss-Prot Function]

**Product images:**



Circular map for MR218554