

Product datasheet for MR218532

Prex2 (NM_029525) Mouse Tagged ORF Clone

Product data:

Product Type:	Expression Plasmids
Product Name:	Prex2 (NM_029525) Mouse Tagged ORF Clone
Tag:	Myc-DDK
Symbol:	Prex2
Synonyms:	6230420N16Rik; AI316880; AI553603; C030045D06Rik; D430013K02; Depdc2; P-Rex2
Mammalian Cell Selection:	Neomycin
Vector:	pCMV6-Entry (PS100001)
E. coli Selection:	Kanamycin (25 ug/mL)
ORF Nucleotide Sequence:	>MR218532 representing NM_029525 Red=Cloning site Blue=ORF Green=Tags(s)

TTTTGTAATACGACTCACTATAGGGCGGCCGGAATTCGTCGACTGGATCCGGTACCGAGGAGATCTGCC
GCCCGGATCGCC

ATGAGCGACGAAAGCGCCAGGGAAGTAGACAAGCAGCTTCGCCTGCGCGTGTGCGTGCTCAGCGAGCTGC
AGAAGACCGAGCGCGACTACGTGGGCACGCTGGAGTTCCTGGTGTGCGCCTTCTTGCATCGAATGAACCA
ATGTGCAGCAGCAAAGGTTGATAAAAATGTGACGGAGGAAACAGTGAAGATGTTATTCTCCAATATCGAG
GAGATCCTCATCGTTCATAAGGAGTTCCTGAAAGTTGTAGAAGAATGCTTATATCCGGAACCCAGTGCTC
AGCAGGAAGTGGGAGCCTGCTTCTTCACTTTAAGGACAAGTTTCGTATCTATGATGAATATTGCAGCAA
CCATGAAAAGGCACAAAATTGCTTCTTGAAGTGAACAAAATAAGAACAAATCCGGACATTTCTTCTGAAC
TGCATGCTGCTTGGAGGTGCGAAGAATACAGACGTTCCCTGGAAGGATATTTAGTGACACCAATTCAGA
GGATATGCAAGTACCCTCTTCTTTGAAGGAATTAAGAGCGGACTCCACGGAGACATAGTGACTACAC
AGCAGTGATGGAAGCACTCCAAGCCATGAAAGCCGTGTGTTCCAACATTAATGAGGCCAAGAGACAGATG
GAGAACTGGAAGTTTTAGAAGAGTGGCAGGCACACATTGAAGGCTGGGAGGGTCCAACATTAAGTACA
CCTGTACTGAGATGCTGATGTGTGGAGTCTAATGAAAATTTCTCCGGAATATTAAGAACGAGTGTT
TTTTCTTTTTGATAATCTTTTAGTATACTGCAAAAAGAAAACACAGACGGCTGAAGAATAGTAAGGCATCC
ACAGATGGGTATCGGTATGTCTTTGAGGGCGGATCAATACTGAGGTGATGGAAGTGGAAAATGTGGATG
ACGGCACAGCTGATTTTACAGCAGTGGGCATATTGTTGTGAATGGGTGGAAGATACACAACACAGCAAA
AAATAAATGTTTTGATGATGCTGCTAAAAGCCCTGAAGAAAAGCATGAGTGGTTTTGAAGCTATTTTGAAA
GAAAGAGAACGTCGAAAGGGTTAAAAGTGAAGTGAACAAGACACCTGGGTAATGATCTCTGAGCAGG
GTGAGAAATTGTATAAATGATGTGCAAAACAGGGAAATCTGATCAAAGACAGAAAAGAAAAGTACCAC
ATTTCTAAGTGCTTCTGGGAAGTGAATTTGTCTCATGGCTATTGAAAATGGAGAGATTCACAGGCC
GAAGAAGTGTTCACTTAGGACAAGCGCTTTAGAGAATGGGATCATCCACCATGTTACCGATAAGCACC
AGTTCAAACCGGAGCAAATGCTATACCGATTCCGTTATGACGATGGTACATTTTACCCAGGAGTGAGAT
GCAGGACGTGATTTCTAAGGGTGAAGGCTCTACTGTCGCTTTCATAGTCTGTTTACCCAGTGGTCAGA



[View online >](#)

GATAAAGATTACCATTTAAGAACTTACAAATCTGTTGTCATGGCCAACAAATTGATAGACTGGTTAATTG
CACAGGTTGATTGCCGTACCAGGGAAGAGGCAATGATATTTGCTGTTGGGCTCTGTGACAATGGATTTAT
GCATCAGTCCTAGAAAAAGTGAATTCAAAGATGAGCCTCTACTTTTCCGCTTTTTTGTGATGAGGAA
ATGGAAGGATCAAATATGAAGCATAGGCTTATGAAACATGACTTGAAGGTTGTGGAGAATGTCATAGCTA
AGTCACTGTTGATTAATCCAACGAAGGCAGCTATGGCTTTGGCCTAGAAGACAAAAACAAAGTTCCAAT
AATAAAATTAGTGAAAAGGGGTGCAATGCCGAGATGGCTGGCATGGAAGTTGGGAAGAAGATATTTGCC
ATTAATGGTGACCTTGTTTTTCTGAGACCTTTTCTGAAGTCGATTGCTTCTGAAATCGTGCTTAAACA
GCAGAAAGCCACTGAGAGTCCTCGTGAGCACAAGCCAAGAGAGACCGTTAAGATTCCAGATTCTGCAGA
CGGGCTTGGTTTTCCAGATCAGAGGCTTTGGACCTTCAGTTGTGCATGCGGTGGGAAGAGGTTACTGTGGCT
GCAGCAGCTGGCCTTCATCCAGGACAGTGTATTATCAAAGTGAATGGAATCAATGTCAGCAAAGAGACAC
ATGCCAGTGTATCGCACATGTCACAGCCTGCCGAAATACAAACGGCCAATGAAGCAAGATTCCATACA
GTGGGTCTACGACAGTCTTGAAGTGTCTCAGGAAGACATTCAGAAGTCCCACTCAAAGCCCCCTGGAGAC
GGGGCTGGAGATGCTTTGAGTGCAAAGTAGAAGATGTCATTGACAAGTCAACACCATGGCTATTATTG
ATGGCAAGAAGGAGCATGTGAGTCTGACGGTGGACAACGTCCACCTCGAGTATGGGGTGTATATGAGTA
TGATAGCACGGCGGCACAAAGTCAATGTGGTGGAGAAGATGGTGGAGCCAAAGGGTTCTTCAGCCTA
ACTGCCAAGATTCTGGAAGCCCTAGCAAAAAGTACGAACATTTTGTCCAAAACCTGCACCAGCCTTAATT
CTCTGAATGAAGTGATCGCCACTGATCTTCAGAGTAAATTCACCAGCATGTGCAGTGAGAGAATCGAACA
TGTGTGTACAGAATATCCAGCTATGGGAGGTTCTCTCGGGTGTGAAGAACAGAGCCTGGCCACCTTT
AAGCAGGCCAAACCTAAGATCTCCCACTGCACAGCAGTATTTCTGCCAACCAACTGCCACGTCAATG
TGATGGAAGTTTCTTATCCGAAAACATCAACTTCCTGGGGAGTGCCTTCGGTGTGCAGCTAGATAGCAG
AAAACATAATTCTCAGATAAAGAAAATAAATCTGTGAGCCAGGGAACTGAGCCCCATGGTGTATATT
CAGCACACAATCACAACCATGGCAGCGCCTTCGGGCTGTCACTGGGACACAAGGATGGGCTGGCCTCC
AGTATTTGCTGAAAGAAGAAGACTTAGAACTCAAGATATCTATCACAACCTTCTGGGCAAGCTGCAGAC
TGCACTGAAGGAGGTAGAGATGAGCGTTTGTCAAATTGATGACCTTCTGTCTTCAATAACATATTCTCT
AAATTGGAACGTAAAGACAACAGAGTGTGTGACACCAATGGACAGTGACAACGAGAAGGGAGAGAGAATA
GCAAACGTGTCTGTTTTAATGTAGCAGGGGATGAGCAAGAGGATTGAGGCCATGATACAGTCAGCAACAG
AGACTCTTACAGTGACTGCAACAGCAACAGGAATTCCATTGCTTCTTCCAGAGTATCTGCAGCAGCCAG
TGCAGTTCCTACTTCCACAGTGTGAGATGGACTCAGGTGATGAGCTTCTATCAGTGTCCGGATATCTC
ATGATAACAAGACAAGATCCCACTTGCCTGGAACAGCTTTCAGCCAGATTGATTCAATAATCAACCT
CTTGAAAGGACAAGCTGTTATAAGAGCCTTTGAGCAGACCAAGTATCTCACACGGGTGAGGATTGCAA
GAATTC AACAGGAAATGGAGGCAAAGCTGAGTTGCCCAAGGAGTTGCGGCTCCATCTCAAGCAGGACC
CCTGGAATCTTCCAGCAGCATCCAGGCCTTGCACAGAGCATCAGAAAACATGCTGAAGAAGTGAAGTG
CCGCATACTACTGGCTCTCCTTGAATACTCAGACAGTGAACCCAACTCCGGAGAGACATGGTTTTCTGT
CAAAGTCTTGTGGCCACTGTCTGTGCCTTCTGTGAGCAGCTCATGGCTGCCTTAAACCAGATGTTTGACA
ACAGCAAGGAAAAATGAAATGGAGACTTGTGAAGCCAGCAGGAGGTGGCTGGACCAGATTGCAAAATGCTGG
TGTGCTTTTTCACTTCCAGTCACTTCTGTACCAAATTTGAAAGATGAACAAGCCATGCTTGAGGATACA
CTGGTTGCCCTGTTTGAATTTGAAAAAGTTTCTTCTTCTTCAAACCATCAGAAGAGGATCCACTGGTTG
CAATGTCCCTCTTACCTACCAAGTGAAGGAAGCAGGCAGGCTCTGAAAGTTTACTTCTACATGGATAG
TTACCATTTTGGCAGCTGCCCAACGGTTGAAGAATGGAGGAGGTTTTAAAATTCATCCTGTTCTCTTT
TCACAAGCATTTGAGAGATGGAAGGATATTGCTATAGAGACAACATCTCTGTGGAAGAGTTTCAAGCAC
AAATAAACACAGCCTCCCTGAAAAGGTCAAACAGTACAATCAGAAGCTCAGGGCATTCTACTTGGACAA
GTCAAATTCACCACCAATACCACATCTAAAGCTGCCTACATAGATAAGCTCATGAAGCCTCTCAATGCT
TTAGATGAACTTTACCGGCTGATCACCTCATTTATCAGATCCAAACGCATCGCTGCCTGTGTGAACACAC
CTTGCAGCGCCTTGGAGTCGGACTGCTGTGAGTTTCTTCCAGAGCTGTGTGACAGGCTCGGTGCCTGTCA
CATCATCATGTGCAGCAGTGGTGTGCACCGGTGCACCCTGAGTGTGACACTAGAGCAAACCATCACTTTA
GCAAGAAGCCATGGGCTCCCTCCTGGTACATTATGCAGGCCATGGATGTGATGAGAAAGCAGGGTGCAA
GAGTTCAGAACACAGCTAAAACTTGGGCGTTAGAGACCGGACTCCTCAGTCAGTCCAAGGCTGTACAA
GCTCTGCGAGCCACCCTCCAGTAGGAGAAGAA

ACGCGTACGCGGCCGCTCGAGCAGAACTCATCTCAGAAGAGGATCTGGCAGCAAATGATATCCTGGATT
ACAAGGATGACGACGATAAGGTTTAA

Protein Sequence: >MR218532 representing NM_029525
 Red=Cloning site Green=Tags(s)

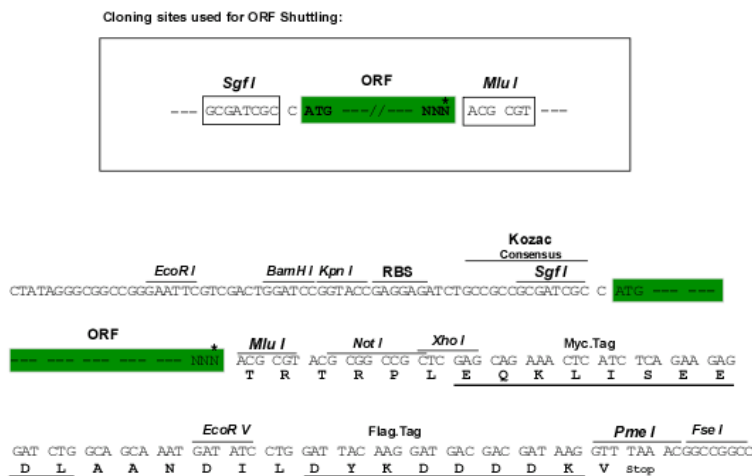
MSDESAREVDKQLRLRVCVLSLQKTERDYVGTLEFLVSAFLHRMNQCAAQKVDKNVTEETVKMLFSNIE
 EILIVHKEFLKVVVECLYPEPSAQQEVGACFLHFKDKFRIYDEYCSNHEKAQKLLLELNKIRTIRTFLLN
 CMLLGGKNTDVPLEGYLVTPIQRIQKYPKLLKELLKRTPRRHSYDTAVMEALQAMKAVCSNINEAKRQM
 EKLEVLLEEWQAHIEGWECSNITDCTEMLMCGVLMKISSGNIQERVFLFDNLLVYCKRKHRLKMSKAS
 TDGYRYVFRGRINTEVMEVENVDGDTADFHSSGHIIVVNGWKIHNTAKNKWFCMAKSPEEKHEWFEAILK
 ERERRKGLKLGMEQDTWVMISEQGEKLYKMCKQGNLIKDRKRKLTFPKCFLGSEFVSWLLEIGEIHRP
 EEGVHLGQALLENGI IHHVTDKHQFKPEQMLYRFYDDGTFYPRSEMQDVISKGVRLYCRHSLFTPVVR
 DKDYHLRTYKSVVMANKLIDWLIAQGD CRTREEAMIFAVGLCDNGFMHHVLEKSEFKDEPLFRFFADEE
 MEGSNMKHRLMKHDLKVVENVIAKSLLIKSNESYGFGLLEDKNKVP I I K L V E K G S N A E M A G M E V G K K I F A
 INGDLVFLRPFPEVDCFLKSCLSNRKPLRVLVSTKPRETVKIPDSADGLGFQIRGFGPSVVHAVGRGTVA
 AAAGLHPGQCI I K V N G I N V S K E T H A S V I A H V T A C R K Y K R P M K Q D S I Q W V Y D S L E S A Q E D I Q K S H S K P P G D
 GAGDAFECKVEDVIDKFNTMAI IDGKKEHVSL TVDNVHLEYGVVVEYDSTAGTKCNVVEKMVEPKGFFSL
 TAKILEALAKSDEHFVQNTSLNSLNEVIATDLQSKFTSMCSERIEHVCHRIS SYGRFSRVLKNRAWPTF
 KQAKPKI SPLHSSDFCPTNCHVNVMEVSYPKTSTSLGSAFGVQLDSRKHNSHDKENKSVPEPKLSPMVYI
 QHTITTTMAAPSGLSLGHKDGHLQYLLKEEDLETQDIYHKLLGKLQTALKEVEMSVQCIDDLLSSITYS
 KLERKTTCEVTPMDSNNEKGERNSKRVCNFVAGDEQEDSGHDTVSNRDSYSDCNRNRSIASFTSICSSQ
 CSSYFHSDEMDSGDELPISVRISHDKQDKIHTCLEQLFSQIDSI INLLKGQAVIRAFEQTKYLT PGRGLQ
 EFQQEMEAKLSCPRLRLHLKQDPWNLPSIIQALAQSIKHAEEVKCRILLALLEYSDSETQLRRDMVFC
 QSLVATVCAFSEQLMAALNQMFDNSKENEMETCEASRRWLDQIANAGLVFHFQSLSPNLKDEQAMLEDT
 LVALFDLEKVSFFFKPSEEDPLVANVPLTYQVEGSRQALKVYFYMSYHFEQLPQRLKGGGFKIHPVLF
 SQALESMEGYCYRDNISVEEFQAQINTASLEKVKQYNQKLR AFYLDKSNSPNTT SKAAYIDKLMKPLNA
 LDELRYLITSFIRSKRI AACVNTPCSASGVLLSVSSELCDRLGACHIIMCSSGVHRCTLSVTLEQTITL
 ARSHGLPPRYIMQAMDVMRKQGARVQNTAKNLGVRDRTPQSAPRLYKLCPPPPVGE

TRTRPLEQKLISEEDLAANDILDYKDDDDKV

Restriction Sites:

SgfI-MluI

Cloning Scheme:



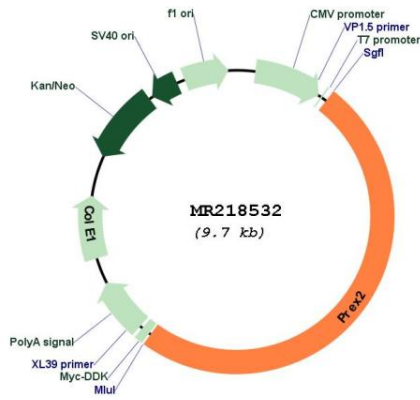
* The last codon before the Stop codon of the ORF

ACCN: NM_029525

ORF Size: 4794 bp

OTI Disclaimer:	The molecular sequence of this clone aligns with the gene accession number as a point of reference only. However, individual transcript sequences of the same gene can differ through naturally occurring variations (e.g. polymorphisms), each with its own valid existence. This clone is substantially in agreement with the reference, but a complete review of all prevailing variants is recommended prior to use. More info
OTI Annotation:	This clone was engineered to express the complete ORF with an expression tag. Expression varies depending on the nature of the gene.
Components:	The ORF clone is ion-exchange column purified and shipped in a 2D barcoded Matrix tube containing 10ug of transfection-ready, dried plasmid DNA (reconstitute with 100 ul of water).
Reconstitution Method:	<ol style="list-style-type: none"> 1. Centrifuge at 5,000xg for 5min. 2. Carefully open the tube and add 100ul of sterile water to dissolve the DNA. 3. Close the tube and incubate for 10 minutes at room temperature. 4. Briefly vortex the tube and then do a quick spin (less than 5000xg) to concentrate the liquid at the bottom. 5. Store the suspended plasmid at -20°C. The DNA is stable for at least one year from date of shipping when stored at -20°C.
RefSeq:	NM_029525.1 , NP_083801.1
RefSeq Size:	11057 bp
RefSeq ORF:	4797 bp
Locus ID:	109294
UniProt ID:	Q3LAC4
Cytogenetics:	1 A2
MW:	181.7 kDa
Gene Summary:	Functions as a RAC1 guanine nucleotide exchange factor (GEF), activating Rac proteins by exchanging bound GDP for free GTP. Its activity is synergistically activated by phosphatidylinositol 3,4,5-trisphosphate and the beta gamma subunits of heterotrimeric G protein. Mediates the activation of RAC1 in a PI3K-dependent manner. May be an important mediator of Rac signaling, acting directly downstream of both G protein-coupled receptors and phosphoinositide 3-kinase (By similarity).[UniProtKB/Swiss-Prot Function]

Product images:



Circular map for MR218532