

Product datasheet for MR218459

Stxbp5l (NM_001114613) Mouse Tagged ORF Clone

Product data:

Product Type:	Expression Plasmids
Product Name:	Stxbp5l (NM_001114613) Mouse Tagged ORF Clone
Tag:	Myc-DDK
Symbol:	Stxbp5l
Synonyms:	9430094L02; A830015P08Rik; LLGL4; T2dm1; t2md1; tomosyn-2
Vector:	pCMV6-Entry (PS100001)
E. coli Selection:	Kanamycin (25 ug/mL)
Cell Selection:	Neomycin
ORF Nucleotide Sequence:	>MR218459 representing NM_001114613 Red=Cloning site Blue=ORF Green=Tags(s)

TTTTGTAATACGACTCACTATAGGGCGGCCGGAATTCGTCGACTGGATCCGGTACCGAGGAGATCTGCC
GCCGCGATCGCC

ATGAAGAAGTTTAATTTCCGAAAAGTTTTGGATGGCTTAAGTGCCTCTTCCCCTGGCAGTGGTAGCAGCA
GTGGCAGTAACAGTGGTGGGCTGGAAGTGCTCTGTCCATCCAGGAGGACTGCAGGGCTCCGAGAGA
GGAAATTCAGGAAAGCCTGACTTCAGACTATTTCCAGATTTGCAAGACAGTTCGGCATGGGTTTCCTTAT
CAGCCACAGCATTGGCCTTTGATCCAGTCCAGAAAATCTTAGCTATTGGAACAAGAACAGGTGCTATAC
GAATACTTGGGAGGCCTGGTGTGACTGTTACTGCCAACATGAAAGTGGTGGCGGTGCTTTGCAGCTCCA
ATTCCTCATCAATGAGGGCGCGTTGGTCACTGCGAGTTCAGATGACACGCTTCATTTGTGGAATCTGAGA
CAGAAAAGGCCGCCATTCTCCATTCTCTAAATTTAACAGAGAACGAATTACTTACTGTACCTACCTT
TCCAGAGTAAATGGCTCTATGTTGGAACAGAAAGAGGAAATACACATATTGTAATATTGAATCTTTTCA
TCTTTCTGGATATGTCATCATGTGGAACAAGGCAATTGAACTCTCCACCAAGACTCATCCAGGCCAGTT
GTACATTTAAGTATAGCCCAAGAGATGAAGGAAAAGTAAATAGGTTACGAGAATGGCACTGTGGTGT
TCTGGGACTTGAATCTAAAAGAGCAGAACTGAGAGTTTATTATGATGAGGCTATTCATCAATTGATTG
GCATCATGAGGGCAAACAATTCATGTGCAGCCACTCAGATGGTAGCTTTATGGAACCTGAAAAGC
CCAAGCCGCCCTTTCAAACCACAGTCCACATGGAAAAAGTCAAAGAGAAGGAAGAAAGTCTGAGTCTT
GTAACCTATTCTAAAGTAGAATACAAAACGTGCAGGAACAGTGAACCTTTATAATTTCTCTGGCGG
GCTGTATATGACAAAGCTTGCAGAAGACCAAGTTTAAACCATCATGCATGGGAAAGCAATTACAGTGCTT
GAGATGGATCATCTATTGTTGAGTTTCTAACGTTATGTGAAACGCCCTATCCAATGAATTTCAAGAAC
CCTATGCTGTTGCTGACTTCTAGAGAAAGATCTCATCGTAGTTGACCTGACACAAACCAATTTTCCAAT
CTTTGAAAATCCATATCCAATGGACATTCATGAGTCACCTGTTACATGCACAGCATATTTTGCCGATTGC
CCTCCAGATTTGATTCTAGTACTCTATTCTATAGGAGTCAAGCATAAAAAACAAGGATACAGTAATAAGG
AATGGCCAGTCAGTGGAGGAGCTTGGAACCTCGGAGCACAACTTATCCAGAAATTTATTACTGGTCA
TGCTGATGGAACAATAAAATTTGGGATGCTTCAGCAATGACACTGCAGATGTTGTACAAGCTAAAAACT
TCCAAAGTGTGAAAAGCAGAAGGCAGGAGAAGGCAACAGACGTGTGAACTTGTAGAGGAAGATCCCT



[View online »](#)

TTGCTGTGCAGATGATCTACTGGTGTCCAGAGAGCAGAATATTTTGTGTCTCTGGAGTCTCTGCATATGT
 CATAATTTATAAATTCAGCAGACATGAAGTCACAACAGAAATAGTGTACTAGAGGTACGACTTCAGTGT
 GATGTTGAAGACATTATTACTCTGAGCCAGAAACAAGCCCTCCATTTCCAGATCTCTCCTCAACTTC
 CTCCTTCAAGGAGTCTTTCTGGAAGCACTAATACTGTGTCTAGTGAAGGAGTGACAAAGGACAGCATCCC
 GTGCCCTCAGTGTAAAACACGGCCAGTACGAATGCCGCCGGGCTATCAAGCAGATCTTGTATTTCAGTTG
 GTGTGGGTAGATGGTGAAGCTCCTCAGCAAATACCAGCCTTTCTATAAGCTCAGCATATGAATAGTGG
 CATTGGAACTGCAGTGGGCTGGTGTGGTGGATTTCATACAGAAGACAGTGTATTAAGCATAGGGGAC
 CATTGACCTCTATAGATCAAGTACCTGTACCAGCGACAGCCCCGGTCTCCTCGAAAGAACAGGCAGTTC
 ATTGACAGACAACCTTTGTCATGCGTGGGCTGTCTAACTTTTATCCTGATTTAACGAAACGGATCCGTA
 CCTATCAGAGCTTAACAGAGCTGAATGATAGTCCAGTTCCTGGAACCTGAGCGCTGCAAGTCCCCAC
 CTCAGAAACCCGAGAGAATTCCTATAATCGCTCCAGGAGCTCTAGCATCTCCAGTATTGACAAAGATTCT
 AAAGAAGCAATTACAGCTTTATACTTTCATGGAATCCTTTGACCGGAAAAATGACTCTACCGTTTCCCCTT
 GTCTGTTTGTGGAACTAGTCTGGGAATGGTAGTACTCATCTCCCTAAATCTACCATCATCAGATGAACA
 AAGGTTTACAGAGCCGGTGGTATTGCCAAGTGGTACATTCTCTCACTGAAAGGAGCAGTGTAAACA
 TTTTCTGCATGGACAGAAGTGGCAGTTAATGCAGCCTCCATACGAAGTATGGAGAGATCCAAACAACA
 CAGATGAAAAATGAAAAAAGCTGGAAAAGGAAATGGTTCATGAAGTACTCGTCTTCCATCCCAAGAGATGGG
 AGACCATCAGTATACGATAATCTGCTCAGAAAAACAAGCCAAAGTCTTCTCACTGCCTTCCAGACCTGC
 CTTTATGTTTACAAACATCACCGAGACGTCGTTTCAATTGCAAGCAGATGTGGTGGTTCATGTGCAACAGTG
 CCTGCCTGGCCTGCTTTTGTGCAAAATGGGCATATCATGATAATGAGCTTACCTAGTCTTCGCCCAATGTT
 GGATGTTAATTTTGGCACTGACAGACATGAGAATAGCACGGACATTTTGTTTTACTAATGAAGGACAG
 GCATTATACCTCGTCTCTCCACTGAAATTCACCGTTAACATATAGCCAAGAAATGTGTGATAATTC
 AGGACATGTTAGCGGATTTGTTTACTCCCATAGAGACACCAGAAGCCAAAATAGAGGCTTTCTCAAGGG
 ACTATTTGGTGGAAAGTGGACAGACATTCGACAGAGAAGAACTCTCGGGGAAGCCTCAGCAGGAAAAGCA
 TCCCGAAGCCTCGACAGCAGCATCCCTGGCCAGGTAGTATAGAAGGGATGAAAGGTGCTGCTGGCGGGG
 TGATGGGAGAGCTGACCCGAGCCGGATTGCACTTGATGAGAGAGGGCAGCGTCTGGCGAGCTGGGAAGA
 GAAGACTGCGGGCATGATGACCAGCGCAGAAGCGTTTTTCCAAGCAGCAGCATGAGCTAATGCTGAAGTAT
 AAGGATAAGAAGTGGTACCAGTTC

ACGCGTACGCGGCCGCTCGAGCAGAACTCATCTCAGAAGAGGATCTGGCAGCAAATGATATCCTGGATT
 ACAAGGATGACGACGATAAGGTTTAA

Protein Sequence:

>MR218459 representing NM_001114613
 Red=Cloning site Green=Tags(s)

MKKFNFRKVL DGLTASSPGSGSSSSGNSGGAGSGSVHPGGTAGLPREEIQESLTSDFYQICKTVRHGFPY
 QPTALAFDPVQKILAIIGTRTGAIIRILGRPGVDCYQHESGA AVLQLQFLINEGALVSASSDDTLHLWNL R
 QKRPAIHLHSLKFN RERITYCHLPFQSKWLYVVGTERGNTHIVNIESFILSGYVIMWNKAIELSTKTHPGPV
 VHLSDSPRDEGKLLIGYENGT VVFWDLKSKRAELRVYYDEAIHSDWHHEGKQFMCSHSDGSLTLWNLKS
 PSRPFQTTVPHGKSQREGRKSECKPILKVEYKTCRNSEPFIIIFSGGLSYDKACRRPSLTI MHGKAITVL
 EMDHPIVEFLTL CETPYPNEFQEPYAVAVLLEKDLIVVDLTQTNFPIFENPYPMDIHESPV TCTAYFADC
 PPDLLILVLYSIGVKHKKQGYSNKEWPVSGGAWNLGAQTYPEIIITGHADGTIKFWDASAMTLQMLYK LKT
 SKVFEKQKAGEGKQTC E LVEEDPFVAVQMIYWCPE SRIFCVSGVSAYV I IYKFSRHEVTTEIVSLEVR LQC
 DVEDIITPEPETSPPFPDLSSQLPPSRSLSGSTNTVSSEGVTKDSIPCLSVKTRPVRMPPGYQADLVIQL
 VVWDGEP PQQITSLSISSAYGIVAFGNCTGLVVVDFIQKTVLLSMGTIDLYRSSDLYQRQPRSPRKNRQF
 IADNFCMRGLSNFY PDLTKRIRTSYQSLTELNDSPVPLELERCKSPTSETRENSYNRSRSSSISSIDKDS
 KEAITALYFMESFARKNDSTVSPCLFVGTSLGMVVLISLNLPSDEQRFTEPVVVLPSGFTLSLKGAVLT
 FSCMDRTGSLMQPPYEVWRDPNNTDEN EKTWKRKLVMNYSSSSQEMGDHQYTIICSEKQAKVFLSPSQT
 LYVHNITETSFILQADVVMCN SACLACFCANGHIMIMSLPSLRPMLDVNYLPLTDMRIARTFCFTNEGQ
 ALYLVSPTEIQR LTYSQEMCDNIQDMLGDLFTP IETPEAQNRGFLKGLFGGSGQTFDREELFGEASAGKA
 SRSLAQHIPGPGSIEGMKGAAGGVMGELTRARIALDERGQRLGELEEKTAGMMTSAEAFSKHAHELM LKY
 KDKKWKYQF

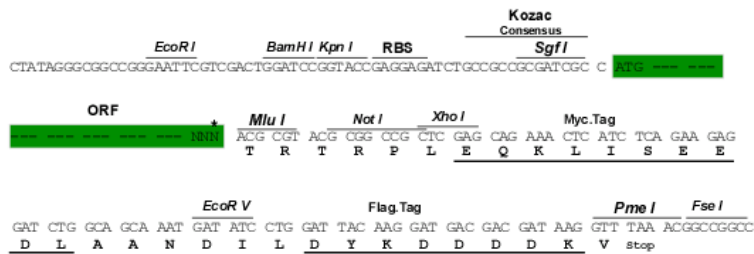
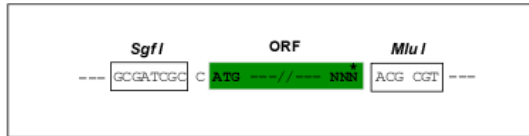
TRTRPLEQKLISEEDLAANDILDYKDDDDKV

Restriction Sites:

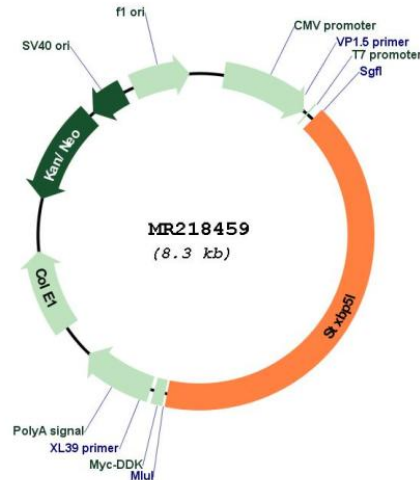
SgfI-MluI

Cloning Scheme:

Cloning sites used for ORF Shuttling:



* The last codon before the Stop codon of the ORF

Plasmid Map:


ACCN: NM_001114613

ORF Size: 3384 bp

OTI Disclaimer: The molecular sequence of this clone aligns with the gene accession number as a point of reference only. However, individual transcript sequences of the same gene can differ through naturally occurring variations (e.g. polymorphisms), each with its own valid existence. This clone is substantially in agreement with the reference, but a complete review of all prevailing variants is recommended prior to use. [More info](#)

OTI Annotation: This clone was engineered to express the complete ORF with an expression tag. Expression varies depending on the nature of the gene.

Components: The ORF clone is ion-exchange column purified and shipped in a 2D barcoded Matrix tube containing 10ug of transfection-ready, dried plasmid DNA (reconstitute with 100 ul of water).

Reconstitution Method:

1. Centrifuge at 5,000xg for 5min.
2. Carefully open the tube and add 100ul of sterile water to dissolve the DNA.
3. Close the tube and incubate for 10 minutes at room temperature.
4. Briefly vortex the tube and then do a quick spin (less than 5000xg) to concentrate the liquid at the bottom.
5. Store the suspended plasmid at -20°C. The DNA is stable for at least one year from date of shipping when stored at -20°C.

RefSeq: [NM_001114613.1](#), [NP_001108085.1](#)

RefSeq Size: 11893 bp

RefSeq ORF: 3387 bp

Locus ID: 207227

UniProt ID: [Q5DQR4](#)

Cytogenetics: 16 B3

MW: 126.3 kDa

Gene Summary: Plays a role in vesicle trafficking and exocytosis inhibition (PubMed:25002582). In pancreatic beta-cells, inhibits insulin secretion probably by interacting with and regulating STX1A and STX4, key t-SNARE proteins involved in the fusion of insulin granules to the plasma membrane (PubMed:21998599). Plays also a role in neurotransmitter release by inhibiting basal acetylcholine release from axon terminals and by preventing synaptic fatigue upon repetitive stimulation (PubMed:24744148). Promotes as well axonal outgrowth (By similarity). [UniProtKB/Swiss-Prot Function]