

Product datasheet for MR218416

Nhs1 (NM_173390) Mouse Tagged ORF Clone

Product data:

Product Type:	Expression Plasmids
Product Name:	Nhs1 (NM_173390) Mouse Tagged ORF Clone
Tag:	Myc-DDK
Symbol:	Nhs1
Synonyms:	5730409E15Rik; A630035H13Rik; A730096F01; BC013565; D10Bwg0940e; mKIAA1357
Vector:	pCMV6-Entry (PS100001)
E. coli Selection:	Kanamycin (25 ug/mL)
Cell Selection:	Neomycin
ORF Nucleotide Sequence:	>MR218416 representing NM_173390 Red=Cloning site Blue=ORF Green=Tags(s)

TTTTGTAATACGACTCACTATAGGGCGCCGGAATTCGTCGACTGGATCCGGTACCGAGGAGATCTGCC
GCCGCGATCGCC

ATGAAAAAGGACGGCTCCTCAGGTTCTTCGGAATCAAGGCAAGCCAGGCTCCCTCTCACGTGCTGTGA
GTTGGATAAATTTCTCCTCCCTGTCCAGGCAGACAAAGAGGCTGTTCCGAGTGATGGAGAGCTGTCCGT
TTGTGGGCACCAGGTGGAAGCCGATGATGAGAAGTGGATATACAGGACCCAGCCAGAAAAGCGGTTTCC
AACTTGGACGAGGAGAGTCGATGGACTGTCCACTACACGGCACCATGGCATCAGCAAGAGAATGTGTCC
TTCCCGCCACAAGACCCCTGTGTTGAGGACCTGCACCGCCAAGCCAAGCTCAACCTCAATCAGTGCT
GAGGGAATGTGACAAGCTGAGGCAAGATGGCTGCCGAAGTTCTCAGTACTATTCTCAGGGACCCACCTTT
GCAGCCGGCTCCAGCCCTGCGACGATTATCAAGATGAAGACACAGAAGCAGACCCGAAAGTGCTCTCTCT
CTTCATCTGAAGAAGAAAGATTTATCGGAATCAGGAGACCTAAAACGCCAACCTCAGGTGACTTCTCCGA
CCTTCATACTCAGACAACTGGACCAAGTCCCTGCCGCTGCCAACACCAGAAGAGAAGACGCGGCAGCAA
GCCCAGACGGTCCAGGCTGACGTGGTTCCTATAAACATAACTGCATCAGCCACTGGCCAAGATGATGATG
GTAGTGCCCATTCGCTGTACGTCCAGACCACTACTCTACGTTAGGAAGGCTTGATAGTTATCGGTCCAC
CGGGCAATGCTTGAAACCAGGGACACCAGCTGTGAGCCGAAGACGTGAAGGTCATCCACCATCAATG
AGAAGGATCAGGGCTCACAAGGGGTAGGCGTTGCTGCCAGATGAGCCACCTCTCAGGTTCTCAGGCA
ACATGTCTGTGCTGAGTGACTCAGCCGGTGTGTTGCCATCTCGCCTCAGTAACGATACTGGTTTCCA
CAGTCTTCCACGTACCGGCCGAGAGCAAGCACCTATTACTGGAGGGAAGGATGGGTGCCCTGGGCTCT
ACTGAAGATACGGATGACACTTCTCCCTACCAGGGGGTAGCTTACAGGGGCATGAAAACCTTTCGCGATT
TAGGAGGTGCGTCGAGTACTGGGATGCTTTCGAGGCCAAATCCCAGCAGTTGAGGTTTTGGAGAGTCC
AGCATGTGTGGTTTACCTCATGCAGCCTACTCTACCAGTGTATCCCAAATGCCAGGCTACTGTCTCT
TCAGAGGTTATTGTCATTACACTGCTCAGAGTGCAGGACAGCTGGACAGTAGAACACCCGGTTCATCTT
CATATTTAAAAATAAAACCCAGAGACCGTCCCACACCCAGATGTTCTGTGAAAGATGACCATCAGTCCCC
CCGTCATCACTGGAACGAGGGTCATCTCATTATTACGGGCTTTAGCCTCCTGTCCCTGGTGCCACC
ACGCTGTTATCCCTCCATGATTCAGAGGCTCTCTAAATGCCCCAGCAAACAGGGAAAATGGATCCCAAG



CCATACTCTATCATTGTAGAAACAACCCAAGCTTTCCTGACCACCCTTCAGATGTGGATGGCAAGAGCGA
 GTGTAGTTATTCGGGGACAGGGGATGTGGCAGTTCTGAGCCCTGGGAATATAAACCTCCAGCAATGGG
 CGGGCATCCCCACTGAAGCCACACCTGGCCACTCCTGGTTGCTCTACTCCCACAAGTAACGTGAGCAGCT
 GCAGTTTGGACCAAAATCTCTCAAGGGTGATACCAGGTCCTGTGTTTCCAGAGGACCATGATGGTTACTA
 TACTACCACTCACGAGGCTGGAACTGTACACTCTCAGTGATGGCTTGGGAACCCAGGCACAGCATG
 GTCAATGTTTTGATGGAAGGGCTCAGAGAAGCAAGGGGATCAGGCCGCTCACCAGGATAAAATCCTTT
 CGAGAAACATCTCTGAAGAAAGCAAGAAACACCCCTGCCACCATCCCGGACCGATTCTCTGCGAAG
 GATTCCTCCAAAAAGAAACCAACAGACAAACGGTCAGGTGCTCAATGAGAGCCTGATCGCCTCCGCTCCAGCAT
 TCACTGCAGCTAAGCCTCCCTGGCAAGGGCGCAGCTCCCTTCCAGAGCCCTGCAGTGACTTTGAGG
 AACCTGGCTCCCAGGTCCAGAAGCCAGAGCATTGTTAGCGAGGGTAGTAGCTTGACCTCCACCACCAC
 TCCCAACGTGATTCTCTGTGTGGGCTACTCCGTCAGAGCGACACAAGTAGCGTCAAGTCGGAATAC
 ACGGACCCTTGGGGTACTACATTGACTACACGAGCTTGCAAGGATCCAGGAAACCCACCGGGGCT
 GCTCAGCAACTGAGGCAGCAACTGAAACGGGCCAGTACGCCACATCCAGGAGGGTGCAGAGTCCC
 AGTGCCCAAGTCCGGGCTGCTCAGTTAGACCAAGATCGCCTCACCAGAGAAGTACAGAGAGTACC
 TCTCCATCCAGTGGGTATTCTAGCCAGTGAATACACCCACAGCACTCACCCCTGTGCTGTGTTTTAA
 AATCAATGTACCAGCAATGAAAGGGGAAGGCCAAGCCAAGTACCAGAAAGAAAATCGTCTCTGAT
 CTCTTCTATGTCCATCTCATCATCGTCCACTTCTCTCTTCTAATACTTCTACCGAAGGAAGTGGGACC
 ATGAAGAACTGGATACAACCTGGCCTCGGCCCTTGCCCTCCCTCCTCTTCCCTCTGCCTT
 CTCCGTGTCTGGCAGACAAGTCCCTTTCTTCCACCCTCCTCCTCTAGCAGATTGCTCCGAGGGCTC
 TCCTCTGCCGCCCTCTCCCATGTTCCCTCCACCACCAAGCCCTGTTCCCTTCTGCTCCCCACC
 GACGGTGCCTTTCTCCTTCTCCACAGCAGTTAGCCCTCTCTTCAAGATCCTGCCTCCTGTGCCAG
 CACCTCCACCTTTCTTCCCTCATCAGAACCCCGCCGCTCCGCTCTGGACCCCAACTCATGAAGA
 AAACAGGCCCTTTTCAAAAACCTAGCCACCGAATCCTCTAGGGAGGCCCTCAGGCCGCTCCCAAC
 AAGGAGGAGGGCTGCCGACCCCATGCCCTGATCACCACAGAAGCTTTCAGATGGTGCAGTTGAGGC
 CAGTGAGGAAGAACTCAGGTGCCGGGCGAGTCTGTTTTCTGAACCATCAGCTCAGGAACACGAATCC
 GACTGCTCCACAGTATCACTTAAAGCCATCTGCTTTCTCAAATCCCGAAATAGCATAAATGAAATGGAG
 AGTGAAAGCCAGGCTGCCTCTGTGACGAGCTCGCTTCCGATGCCTGCCAAGAGCCAGAGTCAAGGTGACC
 ATGACAGTGCAGTAGAGCGTGGCGGCTTCCGAGCTGCAGCGATGGAGCTCCAGGCCGGTCCCAGCCT
 CAGGACCACTCTGCTCCCAGACTTTCACCAGCAGGAAGCCACCCCTCCTCTAAGAAGCCAAACTG
 TTCTGTGGTACCACCTCCGACAGAGATTTACAGCGGAGCCACAGAGAACGGGAGCGAAGCTTTCC
 CAGGGCTGCCAGCCCTACCAGGCAGAGGGGAAGCTGTGCGGAGCCAAGAGGAGAAATCCAGCCAGC
 ATCCCAGACTGGCTCTCATGCTACGGCCCCACCCCGGAGTCCGGCTCTAGAACCAGGAACTGCAGGG
 TCCTTATCCTCTAGCATTGTGGAAGCCAATGTCCCATGGTCCAACCTAATACATCACGGGCCCCACAC
 AGGAAGAGTCAAGCGAGAACAGTGTGGATGGTGAGAGAAATGCGAAGAGCTGCCTGTCTCAACAGGGCAG
 AGAAGCTGGCTTGTGGAACCAACACAGCTGCTTCTCTTCCAGACCCGTTGGATGTATCTAAGGAAGAG
 GGAAGCGATGAGGTGCTGACTCCGACTAAACCCAGGACAACAGAAGACCTGTTTGCAGCCATTACAGAT
 CTAAAAGGAAAGTCTTGGCCGAAAGACTCAGAAGACGATCACACTCGAAATCACTCTCCCTCCCCGCC
 TGTGACACCCACGAGTGTGCCCTAACCTGGCTCTCAAAGCAAGTAGGGTCTATCCAGAGAAGCATA
 AAAAAGAGCACTACCAGCAGTGACAACCTCAAAGCTCTGCTGCTAAAGAAGGGGAGTCCGTCGGACACCA
 GCCTCGCATGTACGGCTGAGATGCTCAAGTCTACGGACCCTCGCTTCCAGAGATCTAGGTCCGAGCC
 TTCCGACAGACAGCCCGACAGCCATCCAGCTGCTCCCCAACAAAGAACAGGAGAGCTCAGGAAGAGTGG
 GCCAAGAACGAAGGCCTGATGCCTCGGAGTCTGTCTTTTTCGGGCCCTCGGTACAGCCGACGAGGACGC
 CACCCTCTGCGGCCAGCAGCAGGTACAGCATGCGGAACCGCATCCAGAGCAGCCCATGACCGTCTCTC
 CGAGGGAGAGGGAGAACCTGCTGAGCCAGCGGACAACAAGCACGAGGGCCCTGGATGCTACCAGGGT
 TGCTCTCTGGACAGACTGACGGTCAAGAGATGGACCAGGCCAGCCTCCTCTGTAGCGAGGAGCCTGCCT
 CTGTGGATGGGATAGGAAGGGCTGAGGGCAACGGTCCCTCGGAGCAGTGTGGGGTACGGAACAGAAGAG
 T

ACGCGTACGCGGCCGCTCGAGCAGAACTCATCTCAGAAGAGGATCTGGCAGCAAATGATATCCTGGATT
 ACAAGGATGACGACGATAAGGTTTAA

Protein Sequence: >MR218416 representing NM_173390
 Red=Cloning site Green=Tags(s)

MKKDGGSSGSGFIKASPGSLSRVSWINFSSLRQTKRLFRSDGELSVCGHQVEADENWIYRTQPRKAVS
 NLDEESRWTVHYTAPWHQQENVFLPATRPPCEDLHRQAKLNLSVLRECDKLRQDGCRRSQYYSQGPTF
 AAGSSPCDDYQDEDEADRKCSLSSSEERF IGIRRPKTPTSGDFSDLHTQTNWTKSLPLPTPEEKTRQQ
 AQTVDADVVPINITASATGQDDGSAHSLYVPDHYSTLGRLDYSYRSTGQCLETDRDTSQTEDEVKVIPPSM
 RRIRAHKGVGVAAQMSHLSGSSGNMSVLSDSAGVVFPSRLSNDTGFHSLPRTGPRASTYSLEGRMGALGS
 TEDTDDTSPYQGGSLQGHENFAHLGGASSTGMLSRPKSQQLRFLLESPACVVSPHAAYSTSVIPNATLLSS
 SEVIVIHTAQSAGQLDSRTPGSSSYSKI KPRDRPTPRCSVKDDHQSPRHWNHGLIHSRALASSVPGAT
 TLLSLHDSEVSLNAPANRENGSQA ILYHCRNNSFPDHPDSDVDGKSECSYSGDRGCSSEPEWYKTSNG
 RASPLKPHLATPGCSTPTSNVSSCSLDQTS LKGDTRSLCEDHDGYTTT THEAGNLYTLDG LGNPRHSM
 VNVFDGRAQRSQGDQAAHQDKILSRNLSLKKAKKPPLP SRTDSLRRIPKNNQTNQV LNESLIASLQH
 SLQLSLPGKGGSSPSQSPCDFEFPWLP RSRSQSIVSEGSSTSTTTPNVYSLCGVTPSQDTS SVKSEY
 TDPWGYIDYTS LQEDPGNPTGGCSANTEAATGNGPVRHIQEGSRVVPVQVPGCSVRPKIASPEKSQRVT
 SPSSGYSSQSNTPTALTVPVFLKSMSPANGK GKAKPKVPERKSSLISSMSISSSTLS SNTSTEGSGT
 MKKLDTLASALAPPPPLPPLPSPCLADKSPFLPPPPLADCSEGSPLPPSPMFP PPPPEALVPFCST
 DGCLSPSPTAVSPSLPRSLPPVPAPPPFLP SSEPAPPLDPKLMKENRPFKNSQSSESSREALRRPAN
 KEEGCRPPMLITTEALQMVQLRPVRKNSGAGAVLFSEPSAQEQRTPTAPQYHLKPSAFLKSRNSINEME
 SESQAASVTSSLPMPAKSQSQGDHDSAVERGGLPSCSDGAGPGPSLRTLLPDSSPSRKPPPISKPKL
 FLVPPPQRDFTAEPTENGSEAFPGVPSPTRAEGEAVRSQEEKSSPASRAGSHATPTPGSPALEPGTAG
 SLSSSIVEANVPMVQNTSPGPTQEESEGENSV DGERNAKSLSQGREAGLLEPNTAASSSDPVDYSKEE
 GSDEVLTPTKPRTTEDLFAAIHRSKRKVLGRKDEDDHTRNHSPSPVPTPTSAAPNLASPKQVGSIQRSI
 KKSTTSDNFKALLLKKGSRSDTSARMSAAEMLKSTDPFRQSRSEPSADSPDPSPCSPNKNRRAQE EW
 AKNEGLMPRSLSFGPRYSRRTPPSAASSRYSMRNRIQSSPMTVI SEGEGEPAEPADNKARRALDATRV
 CSLDRLTGQEMDQASLLCSEEPASVDGIGRAEENG PSEQCGGTEQKS

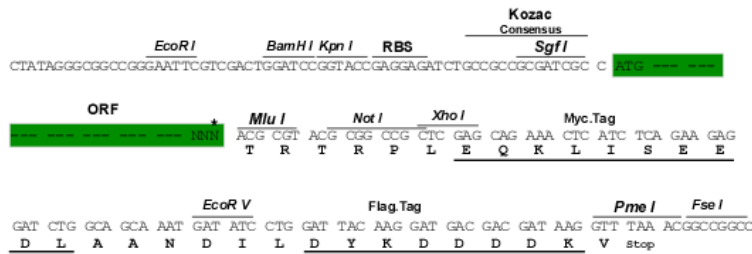
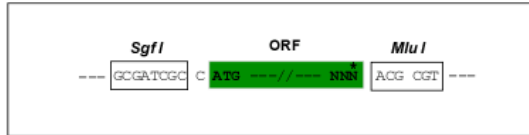
TRTRPLEQKLISEEDLAANDILDYKDDDDKV

Restriction Sites:

SgfI-MluI

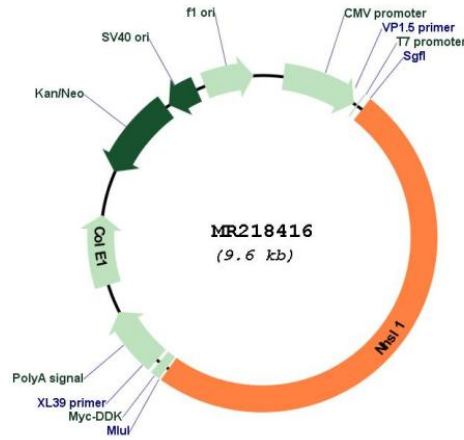
Cloning Scheme:

Cloning sites used for ORF Shuttling:



* The last codon before the Stop codon of the ORF

Plasmid Map:



ACCN: NM_173390

ORF Size: 4761 bp

OTI Disclaimer: The molecular sequence of this clone aligns with the gene accession number as a point of reference only. However, individual transcript sequences of the same gene can differ through naturally occurring variations (e.g. polymorphisms), each with its own valid existence. This clone is substantially in agreement with the reference, but a complete review of all prevailing variants is recommended prior to use. [More info](#)

OTI Annotation: This clone was engineered to express the complete ORF with an expression tag. Expression varies depending on the nature of the gene.

Components: The ORF clone is ion-exchange column purified and shipped in a 2D barcoded Matrix tube containing 10ug of transfection-ready, dried plasmid DNA (reconstitute with 100 ul of water).

Reconstitution Method:

1. Centrifuge at 5,000xg for 5min.
2. Carefully open the tube and add 100ul of sterile water to dissolve the DNA.
3. Close the tube and incubate for 10 minutes at room temperature.
4. Briefly vortex the tube and then do a quick spin (less than 5000xg) to concentrate the liquid at the bottom.
5. Store the suspended plasmid at -20°C. The DNA is stable for at least one year from date of shipping when stored at -20°C.

RefSeq: [NM_173390.3](#), [NP_775566.3](#)

RefSeq Size: 7335 bp
RefSeq ORF: 4764 bp
Locus ID: 215819
UniProt ID: [Q8CAF4](#)
Cytogenetics: 10 7.65 cM
MW: 169.9 kDa