

## Product datasheet for **MR218327**

### Rasa3 (NM\_009025) Mouse Tagged ORF Clone

#### Product data:

Product Type:	Expression Plasmids
Product Name:	Rasa3 (NM_009025) Mouse Tagged ORF Clone
Tag:	Myc-DDK
Symbol:	Rasa3
Synonyms:	A1326412; C86362; E130011G04; GAPIII; h1b381; scat
Mammalian Cell Selection:	Neomycin
Vector:	pCMV6-Entry (PS100001)
E. coli Selection:	Kanamycin (25 ug/mL)



[View online »](#)

**ORF Nucleotide Sequence:**

>MR218327 ORF sequence  
 Red=Cloning site Blue=ORF Green=Tags(s)

TTTTGTAATACGACTCACTATAGGGCGGCCGGGAATTCGTCGACTGGATCCGGTACCGAGGAGATCTGCC  
 GCC**CGGATCGCC**

ATGGCGGTGGAGGAAGAGGGACTGCGGGTCTTCCAGAGCGTGAGGATCAAGATTGGTGAAGCCAAGAATC  
 TTCTTCTACCCGGGGCCAAACAAGATGAGGGACTGCTACTGCACTGTGAACCTGGACCAGGAGGAGGT  
 TTTCCGGACAAAATTGTCGAGAAGTCACTCTGCCCTTTTACGGAGAGGACTTTTACTGTGAAATCCCT  
 CGGAGTTTCCGCCACCTGTCTTTTACATTTTTGATAGAGATGTTTTCCGAAGGGACTCCATCATAGGCA  
 AGGTGGCCATCCAGAAGGAAGACTTGCAGAGGTACCACAACAGGGACACATGGTTCCAGCTGCAGCACGT  
 GGACGCAGACTCAGAGGTGCAGGGCAAGGTCCACCTGGAGCTGAGACTAAGTGAGGTCATTACGGACACT  
 GGTGTCGCTGCCACAACTCGTGCACGCATCTCGAGTGCCAGGGTCTCCCCATTGTGAACGGGCAGT  
 GTGACCCTTACGCCACAGTGACGCTGGCCGGACCCTTCAGGTCTGAAGCAAAGAAAACGAAGGTGAAGAA  
 GAAAACCAACAACCCCCAGTTTACGAGGTGTTTTATTTTGGAGTGACCAGACCCTGCAGCTACAGCAA  
 AAGTCCCCTTTGACTTTGAGGAAGAGGACGTGGACAAACTTGAATCCGAGTTGACCTCTGGAACGCCA  
 GCAACCTGAAGTTTGGGGATGAGTTTCTCGGGAACTGAGGCTTCTCTCAAGATTCTGCGACACTCGAG  
 CTCTTATGAAGCCTGGTACTTCTCCAGCCCCGAGACAACGGCAATAAGAGCCTGAAGCCAGATGACTTG  
 GGGTCTCTGAGGTTAAATGTCGTTTATACAGAAGACCATGTCTTCTCTCTGAGTACTACAGCCCCTGC  
 GTGACCTGTTACTGAAGTCTGCAGATGTGGAGCCTGTCTCAGCCTCAGCAGCTCACATCTGGGTGAGGT  
 GTGCAGAGACAAGCAAGAGGCAGCCATCCCCTGGTACGGCTCCTGCTGCACTATGGCAGGTAAGTCCCC  
 TTCATCAGTGCCATCGCTAGCCAGAGGTGAAGAGGACCCAGGACCCCAATACCATCTCCGAGGAAACT  
 CACTGACATCCAAGTGCATAGATGAGAGCATGAAGTGGCAGGCATGCACTATCTCCATGTGACCCCTGAA  
 GCCCACCATTGAGGAGATCTGCCAGAGCCACAAGTCTGTGAGATCGACCCTGTGAAACTGAAAGACGGC  
 GAAAACCTCGAGAACAACATGGAGAGCCTGAGGCAGTATGTGGATCGCATCTTCACTGTCATCACCAGT  
 CCGGGGTGAGTGCCCCACCGTCATGTGTGACATCTTTTTCTCCTTGGGGAGGGCGGCTGCCAAGCGCTT  
 CCAAGATGACTTGGATGTGAGGTACACGGCCGTGAGCAGCTTCTCTTCTCAGGTTCTTCGCCCCCTGCC  
 ATCCTGTCCCCAACCTTTTCCAGCTGACACCCACCACCGGATCCACAGACTTCTAGAACCCTGACAC  
 TTATCTCAAAGACGATCCAGACCCTCGGCAGCTTGTCCAAGTCCAAGTCTGCCAGTTTTAAGGAGTCGTA  
 CATGGCGACATTCTATGAATCTTCAATGAGCAGAAGTATGCAGATGCTGTAAAAATTTTCTGGATTTG  
 ATCTCATCTCGGGGAGAAGGGACCCCAAGAGCATAGAGCAGCCATCCTGCTTAAAGAAGGTTTCATGA  
 TCAAGCGGGCCAGGGAAGGAAACGGTTTGAATGAAGAATTTCAAGAAGAGGTGGTTTCGCTGACGAA  
 CCACGAGTTCACCTACCAGAAAAGCAAAGGTGATCAGCCACTCTGCAACATCCCCATCGAGAACATCTTG  
 GCTGTGGAGAGGCTAGAGGAGGAGTCTTCCGAATGAAAAACATGTTCCAGGTATCCAGCCAGAGCGTG  
 CCCTGTACATCCAGGCCAACACTGTGTGGAGGCCAAGGACTGGATCGACATCCTCACCAAAGTGAGCCA  
 GTGCAACCAGAAGCGGCTCACCGTCTTCCACCCGTCGGCTACCTGAACGGCCACTGGCTCTGCTGCAGG  
 GCCTCCTCAGACACGGCTGCTGGCTGCACTCCCTGCACTGGTGGGCTCCCGGCCAACATCCAGCTGGACA  
 TTGATGGGACCCTGAAACAGAGCGCATCTACTCTCTTTAACCTGTACATGGGCAAGCTGAAAAAGAT  
 GCAGGAGGCTGCGGCAGCAAGTCTGTGTATGACGGCCCTGAGCAGGAGGAGTACTCAACGTTTCGTCATC  
 GACGACCCCAAGGAGACGTACAAGACGCTGAAGCAGGTATCGCTGGGGTGGGGACCCTTGAGCAGGAGC  
 ACGCACAGTACAGGAGAGACAAGTTCAAGAAGACGAGATACGGGAGCCAGGAGCACCCCTATTGGAGACAA  
 GAGCTTCCAGAACTACATCCGGCAGCAGTCTGAGATCTCCACCCATTCCATT

**ACGCGT**ACGCGGGCCGCTCGAGCAGAACTCATCTCAGAAGAGGATCTGGCAGCAAATGATATCCTGGATT  
 ACAAGGATGACGACGATAAGGTTTAA

**Protein Sequence:**

>MR218327 protein sequence  
 Red=Cloning site Green=Tags(s)

MAVEEEGLRVFQSVRIKIGEAKNLPSYPGNKMRDCYCTVNLDQEEVFRTKIVEKSLCPFYGEDFYCEIP  
 RSFRHLSFYIFDRDVFRRDSIIGKVAIQKEDLQRYHNRDTWFQLQHVADSEVQGVHLELRLSEVITDT  
 GVVCHKLAARIFECQGLPIVNGQCDPYATVTLAGPFRSEAKTKVKKKTNNPQFDEVFYFEVTRPCSYSK  
 KSHDFEEEDVDKLEIRVDLWNASNLKFGDEFLGELRLPLKILRHSSSYEAWYFLQPRDNGNKS LKPDLL  
 GSLRLNVVYTEDHVFSSSEYYSPLRDLLLKSADVEPVASAAHILGEVCRDKQEAAPLVRLLLHYGRVVP  
 FISAIASAEVKRTQDPNTIFRGNSLTSKCIDETMKLAGMHYLVTLKPTIEEICQSHKSCEIDPVKLDG  
 ENLENNMESLRQYVDRIFTVITKSGVSCPTVMCDIFFSLREAAAKRFQDDL DVRYTAVSSFI FLRF FAPA  
 ILSPNLFQLTPHHTDPQTSRTLTLISKTIQTLGSLSKSKSASFKESYMATFYEFFNEQKYADAVKNFLDL  
 ISSSGRRDPKSIEQPILLKEGFMKRAQGRKRFGMKNFKKRWFRLTNHEFTYQKSKGDQPLCNIP IENIL  
 AVERLEEEESFRMKNMFQVIQPERALYIQANNCVEAKDWIDILTKVSQCNOQKRLTVFHPSAYLNHWLCCR  
 ASSDTAAGCTPCTGGLPANIQLDIDGDRETERIYSLFNL YMGKLEKMQEACGSKSVYDGPEQEEYSTFVI  
 DDPQET YKTLKQVIAGVGTLEQEHAQYRRDKFKKTRYGSQEHPIGDKSFQNYIRQQSEISTHSI

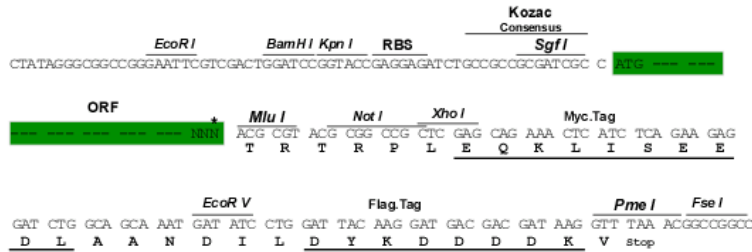
TRTRPLEQKLI SEEDLAANDILDYKDDDDKV

**Restriction Sites:**

Sgfl-Mlul

## Cloning Scheme:

Cloning sites used for ORF Shuttling:



\* The last codon before the Stop codon of the ORF

- ACCN:** NM\_009025
- ORF Size:** 2505 bp
- OTI Disclaimer:** The molecular sequence of this clone aligns with the gene accession number as a point of reference only. However, individual transcript sequences of the same gene can differ through naturally occurring variations (e.g. polymorphisms), each with its own valid existence. This clone is substantially in agreement with the reference, but a complete review of all prevailing variants is recommended prior to use. [More info](#)
- OTI Annotation:** This clone was engineered to express the complete ORF with an expression tag. Expression varies depending on the nature of the gene.
- Components:** The ORF clone is ion-exchange column purified and shipped in a 2D barcoded Matrix tube containing 10ug of transfection-ready, dried plasmid DNA (reconstitute with 100 ul of water).

**Reconstitution Method:**

1. Centrifuge at 5,000xg for 5min.
2. Carefully open the tube and add 100ul of sterile water to dissolve the DNA.
3. Close the tube and incubate for 10 minutes at room temperature.
4. Briefly vortex the tube and then do a quick spin (less than 5000xg) to concentrate the liquid at the bottom.
5. Store the suspended plasmid at -20°C. The DNA is stable for at least one year from date of shipping when stored at -20°C.

**RefSeq:** [NM\\_009025.2](#), [NP\\_033051.2](#)

**RefSeq Size:** 4118 bp

**RefSeq ORF:** 2505 bp

**Locus ID:** 19414

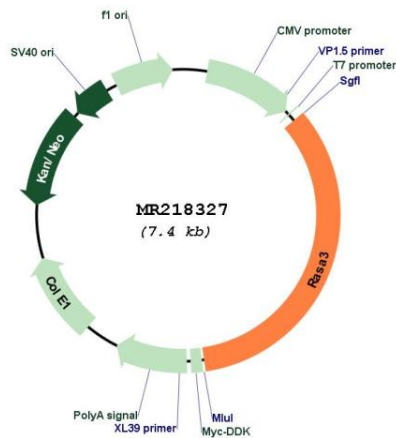
**UniProt ID:** [Q60790](#)

**Cytogenetics:** 8 6.29 cM

**MW:** 96 kDa

**Gene Summary:** Inhibitory regulator of the Ras-cyclic AMP pathway. May bind inositol tetrakisphosphate (IP4). [UniProtKB/Swiss-Prot Function]

### Product images:



Circular map for MR218327