

Product datasheet for **MR218256**

Chsy3 (NM_001081328) Mouse Tagged ORF Clone

Product data:

Product Type:	Expression Plasmids
Product Name:	Chsy3 (NM_001081328) Mouse Tagged ORF Clone
Tag:	Myc-DDK
Symbol:	Chsy3
Synonyms:	4833446K15Rik; AI662215
Mammalian Cell Selection:	Neomycin
Vector:	pCMV6-Entry (PS100001)
E. coli Selection:	Kanamycin (25 ug/mL)



[View online »](#)

ORF Nucleotide Sequence:

>MR218256 representing NM_001081328
 Red=Cloning site Blue=ORF Green=Tags(s)

TTTTGTAATACGACTCACTATAGGGCGGCCGGGAATTCGTCGACTGGATCCGGTACCGAGGAGATCTGCC
 GCC**CGGATCGCC**

ATGGCCGTGCGCTCCCGCCGCCATGGGTGAGCGTGGCATTGGGGTTGGTCTGGGCTTACCGCCGCGT
 CCTGGCTCATCGCCCCGGGTGGCCGAGCTGAGCGAGAAGAGGCGACCGGGCTCCAGTCTTTGCTCCTA
 CTACGGCCGCTCGGCTACCGGGCCCGCGGAGCGCAGCAGCTGCTCCCCAACCCAGTCCCGGCCG
 CGGCTAGAGCAGTCGCCGCCCTGCCAGCCAGGCTCCCGGTCTCAGCAGCCGGAGGCGGCCCG
 GAGGTCCAGTTTTCGGAGCAGCCCTGCCAGCAGCCGGCTCTGTTGCCGAGAGGAGGCGAGGACAC
 GCCGAAGGTGCGACGGCGCTTCCCGGCTCCGGCTGCCAAAGGGGAACCAGAGGAGGAGATGGGGC
 GCGGCTGACCCTCGAAGGTGGCCGGCCGGGAGCAGCCACAACGGCAGCGGGGACGGGGTCCGCTG
 TCCCGACTCCGGACCCGGGACTTCTGTACGTGGGTGTGATGACCGCACAGAAGTACCTGGGCAGTCC
 CGCGCTGGCCGCGCAGCGGACTGGGCGCGCTTATCCCTGGCCGCGTGGAGTTCTTTCCAGTCAGCAA
 TCTCCAGTGTGCGCTTGGCCAGCCCCGCCACCTTTGCTGTATCGCGCTGCCAGGGTTCGACGATT
 CCTACCCTCCCCAGAAAAGTCTTTCATGATGATCAAGTACATGCACGACCCTATCTGGACAAGTATGA
 GTGGTTTATGCGCGCCGACGACGATGTCTACATCAAAGGTGATAAGTTAGAAGATTTCTAAGATCCCTA
 AATAGCAGCAAGCCTCTTACCTGGGACAGACGGCCCTGGGCAATACTGAAGAACTTGGAAAAGTGGGGC
 TGGAGCCCGGGGAGAAGTCTGCATGGGAGGACCTGGCATGATCTTCAGCAGAGAGGTTCTCAGGCGGAT
 GGTGCCTCATATCGGCGAATGCCTCCGAGAGATGTACACCACACGAAGACGTAGAAGTAGGAAGGTGT
 GTTCGCGTTCGCGGGACGAGTGTGTCTGGTCTTATGAGATGCAGCAGCTGTCCATGAAAATACG
 AACACAATCGCAAGGTTACATCCAAGACTCCACAACAGCAAAATCCACGCAGCCATCACGCTCCATCC
 GAACAAAAGGCCCGCTACCAAGTACAGACTTATAACTACATGCTCAGCCGCAAGATCTCCGAGCTCCGC
 TACCGCACCATCCAGCTCCACCGGAGAGCGCTCTCATGAGCAAGCTCAGCAACAGTGAAGTGAAGAAAG
 AGGACCAACAGCTGGGAAGGACGCGCTCTTCAACCCTTCCAGCCTCGGGAGAGAAATGAAGTATGGA
 GTGGGAGTTCTGACGGGAAGCTGCTTACTCAGCTGCAGAGAACCAGCCTCCTCGACAGAGCATCAAC
 AGCATCTAAGGTCAGCTCTGGATGACTGTCTGCAGGTGATGGAGATGATCAACGAGAATGCCAAGA
 GTAGGGCCGACTCATCGACTTCAAGGAAATTCAGTATGGCTACCGCAGGTTGATCCCATGCACGGGT
 TGAGTACATATTGACCTGCTACTCTGTACAAAAGGCACAAAGGAAGGAACTGACTGTGCTGTGAGG
 CGCATGCCTATCTTACGAGCCATTTAGCAAGCCTTTCTCAGAGAGGTGGAAGAACTCGACGTCAACC
 GTCTGGTGAGAGTATCAACAGCGGTACACAGTATTCTCGTTATATCCAATTCTAAAAATCTCTC
 TTCTCTCAAGAGGCCAAAGACATAGGAGGGCACAATGAAAAGAAAGTACACATTCTCGTCCACTCGTT
 GGAAGGTACGACATTTTCTTGGATTATGAAAAATTTGAAAGTACGTGTCTTATCCAAAGCAAAATG
 TCAAGCTTGTATCATCTTTTACGAGGGATGCTGGCCAAGAGTCCATCAAGCATTGAGCTGATACA
 AGAATATCAGAGCAGGTATCCAGTGCAGAAATGATGCTATCCCATGAAGGGAGAGTTTTCCAGAGGT
 CTTGGTCTTGAATGGCTTCTCCAGTTTGACAATGACACATTGCTGCTATTTTGTGATGTTGACTTGA
 TTTTCAGAGGAGACTTCTCAACGCTGTGAGACAATACAGTTCAGGGACAACAGGTATATTACCCCAT
 CATCTTTAGCCAGTATGACCCAAAGGTACCCATATGAGAAATCCTCCACAGAGGGTACTTTGTATTC
 TCAAAGGAAACTGGGTTTTGGAGAGACTATGGCTACGGAATCACATGCATTTACAAAAGCGATCTACTGG
 GTGAGGTGGATTTGATACCTCAATACAAGGCTGGGACTGGAAGATGTAGATCTCTATAATAAAGTCAT
 CCTATCTGGCTTACGGCCCTCAGAAGTCAAGAAGTGGGAGTGGTGCATATTTCCATCCTGTTCTTGT
 GATCCTAACTGGACCCTAAGCAGTATAAGATGTGCTTAGGATCCAAAGCAAGTACTTTTGCCTCAACCA
 TGCAACTGGTGAAGTCTGGTTAGAAAACATTTGGGTGTGAGGATAATCGAAGTCTCTCC

ACGCGTACGCGGCCGCTCGAGCAGAACTCATCTCAGAAGAGGATCTGGCAGCAATGATATCTGGATT
 ACAAGGATGACGACGATAAGGTTTAA

Protein Sequence: >MR218256 representing NM_001081328
 Red=Cloning site Green=Tags(s)

MAVRSRRPWVSVALGLVLGFTAASWLIAPRVAELSEKRRRGSSLCSSYGRSATGPRADAQQLLPQPQSRP
 RLEQSPPPASHELPGPQQPEAAPGGPSFRSSPWQFPALLPQRRRGHTPEGATALPGAPAAKGEPEEEDGG
 AADPRKGGRPGSSHNHSGDGGAAVPTSGPGDFLYVGVMTAQKYLGSRALAAQRTWARFIPGRVEFFSSQQ
 SPSAALGQPPPLPVIALPGVDDSYPPQKKSFMMIKYMHDHYLDKYEFWFRADDDVYIKGDKLEEFRLSL
 NSSKPLYLGQTGLGNTTEELGKLGLEPGENFCMGGPGMIFSRVLRMRMVPHIGECLREMYTTHEDEVGRC
 VRRFGGTQCVWSYEMQQLFHENYEHNRKGYIQDLHNSKIHAAILLHPNKRPAQYRHLHNYMLSRKISELR
 YRTIQLHRESALMSKLSNSEVSKEDQQLGRTPSFNHFQPRERNEVMEWFLTGKLLYSAAENQPPRQSN
 SILRSALDDTVLQVEMINENAKSRGRLIDFKEIQYGYRRVDPMHGVEYILDLLLLYKRHKGRKLTVPVR
 RHAYLQQPFSKPFREVEELDVNRLVESINSGTQSFVINSLSKILSSLQEAKDIGGHNEKKVHILVPLV
 GRYDIFLRFMENFESTCLIPKQNVKLVILFSRDAGQESIKHIELIQEYQSRYPSEMMIPMKGEFSRG
 LGLEMASSQFDNDTLLFCVDVLI FRGDFLQRCRDNTVQGQVYYPYIIFSQYDPKVTHMRNPTEGDFV
 SKETGFWRDYGITCIYKSDLLGAGGFDTSIQGWGLEVDLYNKVILSGLRPFRSQEVGVVHIFHPVHC
 DPNLDPKQYKMLGSKASTFASTMQLAELWLEKHLGVRDNRRLS

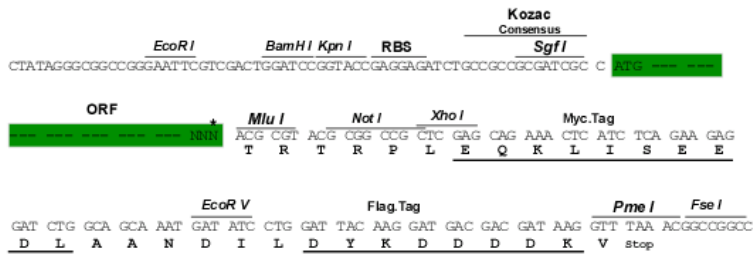
TRTRPLEQKLISEEDLAANDILDYKDDDDKV

Chromatograms: https://cdn.origene.com/chromatograms/mm9012_f05.zip

Restriction Sites: SgfI-MluI

Cloning Scheme:

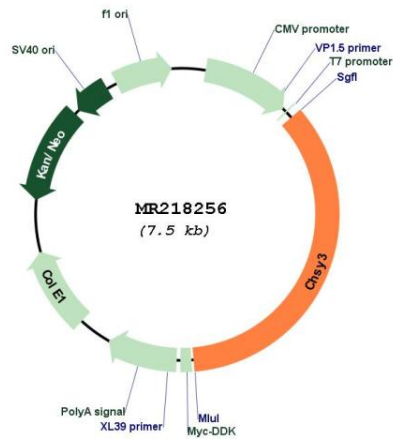
Cloning sites used for ORF Shuttling:



* The last codon before the Stop codon of the ORF

ACCN:	NM_001081328
ORF Size:	2652 bp
OTI Disclaimer:	The molecular sequence of this clone aligns with the gene accession number as a point of reference only. However, individual transcript sequences of the same gene can differ through naturally occurring variations (e.g. polymorphisms), each with its own valid existence. This clone is substantially in agreement with the reference, but a complete review of all prevailing variants is recommended prior to use. More info
OTI Annotation:	This clone was engineered to express the complete ORF with an expression tag. Expression varies depending on the nature of the gene.
Components:	The ORF clone is ion-exchange column purified and shipped in a 2D barcoded Matrix tube containing 10ug of transfection-ready, dried plasmid DNA (reconstitute with 100 ul of water).
Reconstitution Method:	<ol style="list-style-type: none">1. Centrifuge at 5,000xg for 5min.2. Carefully open the tube and add 100ul of sterile water to dissolve the DNA.3. Close the tube and incubate for 10 minutes at room temperature.4. Briefly vortex the tube and then do a quick spin (less than 5000xg) to concentrate the liquid at the bottom.5. Store the suspended plasmid at -20°C. The DNA is stable for at least one year from date of shipping when stored at -20°C.
RefSeq:	NM_001081328.1 , NP_001074797.1
RefSeq Size:	3882 bp
RefSeq ORF:	2655 bp
Locus ID:	78923
UniProt ID:	Q5DTK1
Cytogenetics:	18 D3
MW:	100.5 kDa
Gene Summary:	Has both beta-1,3-glucuronic acid and beta-1,4-N-acetylgalactosamine transferase activity. Transfers glucuronic acid (GlcUA) from UDP-GlcUA and N-acetylgalactosamine (GalNAc) from UDP-GalNAc to the non-reducing end of the elongating chondroitin polymer. Specific activity is much reduced compared to CHSY1.[UniProtKB/Swiss-Prot Function]

Product images:



Circular map for MR218256