

Product datasheet for MR218232

Gpr19 (NM_001167700) Mouse Tagged ORF Clone

Product data:

Product Type:	Expression Plasmids
Product Name:	Gpr19 (NM_001167700) Mouse Tagged ORF Clone
Tag:	Myc-DDK
Symbol:	Gpr19
Mammalian Cell Selection:	Neomycin
Vector:	pCMV6-Entry (PS100001)
E. coli Selection:	Kanamycin (25 ug/mL)
ORF Nucleotide Sequence:	>MR218232 ORF sequence Red=Cloning site Blue=ORF Green=Tags(s)

TTTTGTAATACGACTCACTATAGGGCGGCCGGAATTCGTCGACTGGATCCGGTACCGAGGAGATCTGCC
GCC**CGATCGCC**

ATGGATAACGACCAGCCGCCTGTGGTACTGCCACCCTGCTGGTGCCCTTCAGAACAGCAGCTGCGCGG
AAGCAGCTGAGGCCCTGCTGCCCATGGCTGATGGGATTGCATGAGGAGCACAGCTGGATGAGCAACAG
GACAGAGCTTCAGTACGAGCTGAACCTGGAGAGGTGGCCACCGCCAGCATCTTCTTTGGCGCTTTGTGG
TTGTTCTCCATCTTTGGCAATCCCTGGTATGTCTGGTCATCCACCGAGCCGGAGGACTCAGTCCACCA
CCAACTACTTCGTGGTGTCCATGGCGTGTGCTGACCTTCTCATCAGCGTGGCCAGCACGCCGTTTGTGCGT
GCTGCAGTTCACCACCGGAGGTGGACCTGGGTAGCGCCATGTGCAAGGTGGTCCGCTACTTCCAGTAC
CTCACCCCGGCGTGCAGATCTACGTGCTGCTCTCCATCTGCATCGACCGCTTCTATACCATCGTCTACC
CGCTGAGCTTCAAGGTGTCCCGAGAGAAGGCCAAGAAAATGATTGCAGCCTCCTGGATCTTGGACGCGGC
CTTCGTGACGCCTGTCTTCTTTTCTACGGCTCTAACTGGGATAGTCACTGTAACACTTCTCCTCCCTCCC
TCCTGGGAGGGAAGTGCCTATACCGTCATCCACTTCTTGGTGGGCTTCGTGATCCCTCCATCCTCATAA
TCCTGTTTTACCAGAAGTGCATAAAGTATATCTGGAGAATAGGCACGGACGGCGGACGCTGAGAAGGAC
GATGAACATTGTCCCAGGACAAAGGTGAAAACGGTCAAGATGTTCTGCTCTTGAACCTAGTGTTCCTG
TTCTCCTGGCTACCTTTCATGTGGCTCAGCTCTGGCATCCCCATGAGCAAGACTACAAGAAGAGCTCCC
TTGCTTTCACGGCAGTCACGTGGGTATCTTTCAGCTCTTCAGCCTCGAAACCCACTCTGTACTCTATTTA
TAATGCCAATTTTCGGAGAGGGATGAAAGAGACATTCTGCATGTCCTCGATGAAATGCTACCGCAGCAAT
GCCTACACCATCAGACCAGCTCACGGATGGCCAAAAGAACTATGTGGGCATTTTCGAAAATCCCTCCCG
TGAGCAGGACCATAACCAAAGACTCCATCTATGACTCATTTGACCGGAGGCCAGGGAGAAGAAGCTCGC
CTGGCCATCAACTCAAACCTCCAAACACTTTTGTC

ACGCGTACGCGGCCGCTCGAGCAGAACTCATCTCAGAAGAGGATCTGGCAGCAATGATATCCTGGATT
ACAAGGATGACGACGATAAAGGTTTAA



[View online »](#)

Protein Sequence: >MR218232 protein sequence
Red=Cloning site Green=Tags(s)

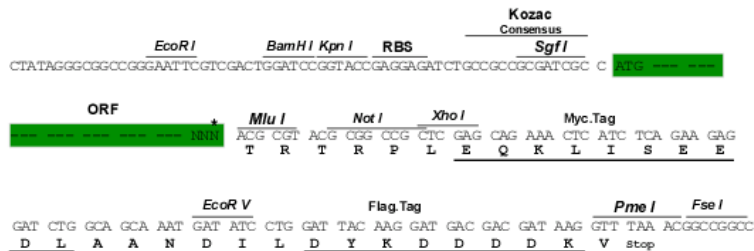
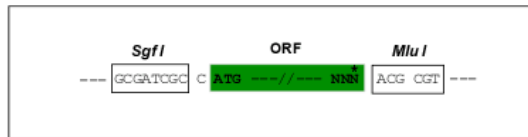
MDNDQPPVVTATLLVPLQNSSCAEAAEALLPHGLMGLHEEHSWMSNRTELQYELNPGEVATASIFFGALW
 LFSIFGNLSVCLVIHRSRRTQSTTNYFVVSMACADLLISVASTPFVVLQFTTGRWTLGSAMCKVRYFYQY
 LTPGVQIYVLLSICIDRFYTIVYPLSFKVSREKAKKMIAASWILDAAFVTPVFFFYGSNWDSHCNVFLPP
 SWEGTAYTVIHFLVGFVIP SIL IILFYQKVIKYIWRIGTDGRTLRRMTNIVPRTKVKTVMFLLNLVFL
 FSWL PFHVAQLWHPHEQDYKSSLVFTAVTWVSFSSASKPTLYSIYNANFRRGMKETF CMSSMKCYRSN
 AYTI TSSRMAKRN YVGI SEIPPVSRITKDSIYDSFDREAREKKLAWPINSNPPNTFV

TRTRPLEQKLISEEDLAANDILDYKDDDDKV

Restriction Sites: SgfI-MluI

Cloning Scheme:

Cloning sites used for ORF Shuttling:



* The last codon before the Stop codon of the ORF

ACCN: NM_001167700

ORF Size: 1227 bp

OTI Disclaimer: The molecular sequence of this clone aligns with the gene accession number as a point of reference only. However, individual transcript sequences of the same gene can differ through naturally occurring variations (e.g. polymorphisms), each with its own valid existence. This clone is substantially in agreement with the reference, but a complete review of all prevailing variants is recommended prior to use. [More info](#)

OTI Annotation: This clone was engineered to express the complete ORF with an expression tag. Expression varies depending on the nature of the gene.

Components: The ORF clone is ion-exchange column purified and shipped in a 2D barcoded Matrix tube containing 10ug of transfection-ready, dried plasmid DNA (reconstitute with 100 ul of water).

Reconstitution Method:

1. Centrifuge at 5,000xg for 5min.
2. Carefully open the tube and add 100ul of sterile water to dissolve the DNA.
3. Close the tube and incubate for 10 minutes at room temperature.
4. Briefly vortex the tube and then do a quick spin (less than 5000xg) to concentrate the liquid at the bottom.
5. Store the suspended plasmid at -20°C. The DNA is stable for at least one year from date of shipping when stored at -20°C.

RefSeq: [NM_001167700.2](#)

RefSeq Size: 1843 bp

RefSeq ORF: 1230 bp

Locus ID: 14760

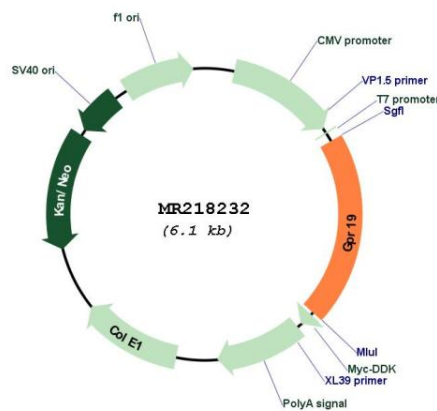
UniProt ID: [Q61121](#)

Cytogenetics: 6 G1

MW: 46.8 kDa

Gene Summary: Orphan receptor.[UniProtKB/Swiss-Prot Function]

Product images:



Circular map for MR218232