

Product datasheet for **MR218168**

Sik2 (NM_178710) Mouse Tagged ORF Clone

Product data:

Product Type:	Expression Plasmids
Product Name:	Sik2 (NM_178710) Mouse Tagged ORF Clone
Tag:	Myc-DDK
Symbol:	Sik2
Synonyms:	G630080D20Rik; Snf1lk2
Mammalian Cell Selection:	Neomycin
Vector:	pCMV6-Entry (PS100001)
E. coli Selection:	Kanamycin (25 ug/mL)



[View online »](#)

ORF Nucleotide Sequence:

>MR218168 representing NM_178710
 Red=Cloning site Blue=ORF Green=Tags(s)

TTTTGTAATACGACTCACTATAGGGCGGCCGGAATTCGTCGACTGGATCCGGTACCGAGGAGATCTGCC
 GCC**CGCATCGCC**

ATGGTCATGGCGGATGGCCCGAGGCACTTGCAGCGCGGGCCAGTCCGGTGGGGTCTACGACATCGAGG
 GCACGCTGGGCAAGGGCAACTTTGCCGTGGTGAAGCTGGGGCGGCACCGATCACCAAGACGGAGGTGGC
 TATAAAAATAATAGACAAGTACAGCTGGATGCAGTAAACCTTGAGAAAATCTACCGAGAAGTACAGATA
 ATGAAAATGCTCGACCATCCTCACATCATTAACTGTATCAGGTAATGGAGACAAAAGTATGTTGTACC
 TTGTGACAGAATATGCCAAAAATGGAGAAATTTTGGATTATCTTGCTAATCATGGCCGATTAATGAATC
 TGAAGCCAGGAGAAAATCTGGCAAATCTGTCTGCTGTTGATTATTGCCATGGCCGGAAGGTAGTGCAC
 AGAGACCTGAAGGCTGAAAATCTCTGTGGATAACAACATGAATATCAAAATAGCAGATTTCCGGCTTTG
 GAAATTTCTTTAAACTGGTGAAGTCTGGCAACATGGTGTGGCAGCCCCCTTATGCAGCCCCAGAAGT
 CTTTGAAGGGCAGCAGTATGAAGGACCACAGCTGGATATATGGAGCATGGGAGTTGTTCTTTATGCCTT
 GTCTGTGGAGCTCTACCTTTTGTATGGACCAACTCTCCCTATTTTGAAGCAGAGGGTTTTAGAAGGAAGT
 TCCGGATTCTTATTTTATGTCAGAAGATTGTGAACACCTCATTAGAAGGATGTTGGTCTAGATCCTTC
 CAAACGGCTAAGCATAGCTCAAATCAAGGAGCACAAAGTGGATGCTCATAGAGGTTCTGTACAGAGGCT
 ATTCTCTACCCACAAGAACAGGAAAACGAGCCGTCATTGGGAAATTTAATGAGCAGGTTCTTCGACTGA
 TGCACAGCCTTGGGATTGATCAGCAGAAGACTGTTGAGTCTTTGCAAAAACAAGAGCTATAATCACTTTGC
 TGCCATTTATTTCTTGTGGTGGAACTGCTAAAATCACATAGGAGCAGTTTTCTGTGGAGCAGAGACTT
 GATGGCCGCCAGCGTCGGCCTAGCACCATTGCTGAACAAACAGTGGCAAGGCACAACTGTGGGGCTGC
 CAGTGACCTTGCATCCACCGAACGTGAGACTGATGCGATCTACCTCCTCCACAGGCATCCAATGTGGA
 GGCTTTTTCATTTCCAACATCCAGCTGTCAAGCAGAAGCTGCCTTTATGGAGGAAGAGTGTGTCGACACT
 CCAAAGGTGAATGGCTGCCTGCTTGACCTGTGCCCTGTCTGTTGAGGAAGGATGCCAGTCACTGC
 CCAGCAGTATGATGGAGACCTCCATTGATGAAGGCTTGGAGACAGAAGGAGAGGCTGAGGAAGACCCAG
 TCAGGCCCTTGAAGCTTTCAGGCCACACGAGTGGCAGCGACGGCACACTCTGTGAGAAGTACTAAC
 CAATTGGTTGTGATGCCCGGGCAGGAAAATGTTCTCCATGAGTGATAACCCCTCCCTTGAAGTGTGG
 ACTCTGAGTATGATATGGGGTCTGCCAGAGGGACCTGAACTTTCTGGAAGACAGCCCTTCTTGAAGGA
 CATCATGTTAGCCAATCAGCCGTCACCCCGCATGACATCTCTTTCATAAGCCTCAGACCTGCCAACCCA
 GCCATGCAGGCTCTGAGCTCACAGAAGCGTGGAGCCACAACCGTCCCCGTGAGCTTCGAGAAGGCC
 GCAGAGCATCAGATACGTCCTTACACAAGGAATTGTAGCATTTAGACAACATCTTCAGAATCTTGCTAG
 AACCAAAGGAATTCTGGAGTTGAACAAAGTACAATTGCTGTATGAACAAATGGGATCAAACGCAGACCT
 ACCTTAACATCAACTGCTCCTCAGCTCCAAGACCTTTCGAGCAGTTGCCCTCAGGAGGAAATCTCCAGC
 AGCAGGAAAGTGTCTCCAGCCTGTCTGCCAGCATGCACCTCAGCTCTCACACAGCAAAGCTTGGAAAC
 CCAGTACCTACAGCATCGACTCCAGAAGCCAACTTCTGCCAAAGGCCAGAGTCTTGTCCAGTGTAT
 TGTAAGAGCCACCTCGGAGCCTGGAACAGCAGCTACAGGAGCATAGGCTCCAACAGAAGCGACTTTC
 TCCAGAAGCAGTCTCAGCTGCAAGCATATTTAATCAGATGCAGATAGCAGAGAGCTCTACCTGGACC
 AAGTCAGCAGCTGGCTCTTCCCCACCAGGAGACTCCACTGACATCCAGCAGCCCCATCATTAGCCTG
 ACCCAGGCCCTGAGTCTGTCTCGAGCCCTTCTGAGCAGATGCAATTTAGCTTTTCTCAGCCAAT
 ACCCAGAGATGCAGTTGCAGCCACTGCCCTCTACTCCCGCCCCAGGCTCCACCTCCCTTACCCTCACA
 ATTGACAGCAACATCAGCAGCCACCACCCACCACCCCTCCACCACAGCAGCCAGGAGCTGCTCCA
 ACCTCCTTACAGTTCTCCTATCAGACTTGTGAGCTGCCAAGCACCCTTCTTGTACCAAATATCCTG
 CTTCTGTCACTATCCTGTGGATGGAGCCAGCAGCAACCTCACAGGGCGGACTGTCCAGGAGCTC
 AGGACTTCAGGACACCGCATCTAGCTATGACCCACTGGCCCTCTCTGAGCTCCCTGGACTCTTTGATTGT
 GAAATGGTAGAAGCTGTGGATCCACAACACAATGGGGTGTGAGCTGCTTAGCCCCGGAGACC

ACGCGTACGCGGCCGCTCGAGCAGAAACTCATCTCAGAAGAGGATCTGGCAGCAAATGATATCCTGGATT
 ACAAGGATGACGACGAT AAGGTTTAA

Protein Sequence: >MR218168 representing NM_178710
 Red=Cloning site Green=Tags(s)

MVMADGPRHLQRGPVVRVGFYDIEGLGKGNFAVVKLGRHRITKTEVAIKIIDKSQLDVAVNLEKIYREVQI
 MKMLDHPHI IKL YQVME TKSM LYL VTEYAKNGE IFDYLANHGRLNESEARRKFWQILSAVDYCHGRKVVH
 RDLKAENLLLDNNMNIKIADFGFNGFFKTGELLATWCGSPPYAAPEVFEGQQYEGPQLDIWSMGVLYVL
 VCGALPFDGPTLPILRQRVLEGRFRIPYFMSEDCEHLIRRMLVLDPSKRLSIAQIKEHKWMLIEVPVQRP
 ILYPQEQENEPSIGEFNEQVLRMLMHS LGIDQKTVESLQNKSYNHFAAIYFLLVERLKSHRSSFPVEQRL
 DGRQRRPSTIAEQTVAKAQTVGLPVTLHPPNVRLMRSTLLPQASNVEAFSFTSSCQAEAAFMEEECVDT
 PKVNGCLLDPVPPVLRKGCQSLPSSMMETSIDEGLETEGEAEEDPSQAFEAFQATRSQQRHRTLSEVTN
 QLVVMPGAGKMFMSMDNPSLESVDSEYDMGSAQRDLNLFEDSPSLKDIMLANQSPRMTSPFISLRPANP
 AMQALSSQKREAHNRSPVSFREGRRASDTSLTQGIVAFRQHLQNLARTKGILELNKVQLLYEQMGSNADP
 TLTSTAPQLQDLSSSCPQEEISQQQESVSSLASMHQPQLSPQQSLETQYLQHRLQKPNLLPKAQSPCPVY
 CKEPFRSLEQQLQEHRLQKRLFLQKQSQLQAYFNQMQUIAESSYPGPSQQLALPHQETPLTSQQPPSFL
 TQALSPVLEPSSEMQMFSFLSQYPEMLQPLPSTPGPQAPPPLPSQLQHQPPPPPPPPPPPPPPQPGAAP
 TSLQFSYQTCELPSTTSSVPNYPASCHYPVDGAQQSNLTGADCPRSSGLQDTASSYDPLALSELPLGDFC
 EMVEAVDPQHNGVVSLARET

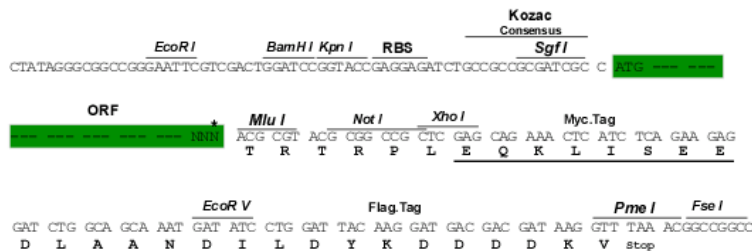
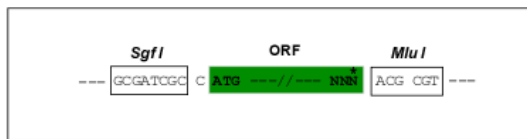
TRTRPLEQKLISEEDLAANDILDYKDDDDKV

Chromatograms: https://cdn.origene.com/chromatograms/ja1377_e07.zip

Restriction Sites: SgfI-MluI

Cloning Scheme:

Cloning sites used for ORF Shuttling:



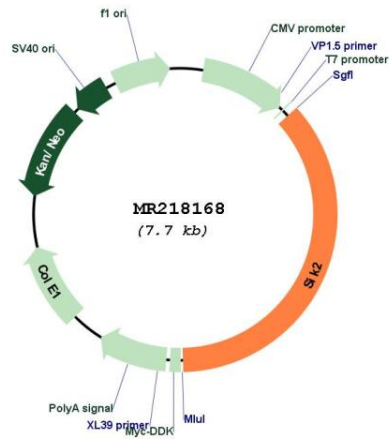
* The last codon before the Stop codon of the ORF

ACCN: NM_178710

ORF Size: 2793 bp

OTI Disclaimer:	The molecular sequence of this clone aligns with the gene accession number as a point of reference only. However, individual transcript sequences of the same gene can differ through naturally occurring variations (e.g. polymorphisms), each with its own valid existence. This clone is substantially in agreement with the reference, but a complete review of all prevailing variants is recommended prior to use. More info
OTI Annotation:	This clone was engineered to express the complete ORF with an expression tag. Expression varies depending on the nature of the gene.
Components:	The ORF clone is ion-exchange column purified and shipped in a 2D barcoded Matrix tube containing 10ug of transfection-ready, dried plasmid DNA (reconstitute with 100 ul of water).
Reconstitution Method:	<ol style="list-style-type: none">1. Centrifuge at 5,000xg for 5min.2. Carefully open the tube and add 100ul of sterile water to dissolve the DNA.3. Close the tube and incubate for 10 minutes at room temperature.4. Briefly vortex the tube and then do a quick spin (less than 5000xg) to concentrate the liquid at the bottom.5. Store the suspended plasmid at -20°C. The DNA is stable for at least one year from date of shipping when stored at -20°C.
RefSeq:	NM_178710.3 , NP_848825.2
RefSeq Size:	3561 bp
RefSeq ORF:	2796 bp
Locus ID:	235344
UniProt ID:	Q8CFH6
Cytogenetics:	9 A5.3
MW:	104.6 kDa
Gene Summary:	Phosphorylates 'Ser-789' of IRS1 in insulin-stimulated adipocytes, potentially modulating the efficiency of insulin signal transduction. Inhibits CREB activity by phosphorylating and inhibiting activity of TORCs, the CREB-specific coactivators, like CRTC2/TORC2 and CRTC3/TORC3 in response to cAMP signaling (PubMed:29211348).[UniProtKB/Swiss-Prot Function]

Product images:



Circular map for MR218168