

Product datasheet for **MR218120**

Dram2 (NM_026013) Mouse Tagged ORF Clone

Product data:

Product Type: Expression Plasmids
Product Name: Dram2 (NM_026013) Mouse Tagged ORF Clone
Tag: Myc-DDK
Symbol: Dram2
Synonyms: 2010305N14Rik; 2610318G18Rik; AI647667; Tmem77
Mammalian Cell Selection: Neomycin
Vector: pCMV6-Entry (PS100001)
E. coli Selection: Kanamycin (25 ug/mL)
ORF Nucleotide Sequence: >MR218120 representing NM_026013
Red=Cloning site Blue=ORF Green=Tags(s)

TTTTGTAATACGACTCACTATAGGGCGGCCGGAATTCGTCGACTGGATCCGGTACCGAGGAGATCTGCC
GCC**CGATCGCC**

ATGTGGTGGTTTCAGCAAGGCCTCAGTTTTCTCCGTCGGCCCTTGAATTTGGACATTTGCTACCTTCA
TATTCTCATATCACTGCAATAAACTCCACCATGTTGACCCTGCATTGCCTTATATCAGCGACACAGG
GACAATACCTCCTGAAAGATGCCTCTTTGGAGTAATGCTAAATATCGCTGCAGTTTTAGGCATTGCTACC
ATGTATGTTTCGTTACAAGCAAGTTCATGCACTGAACCCGAAGAGAACCTTATCATCAAATTAACAAGG
CTGGCCTTGACTTGGGATACTGAGTTGTTTAGGACTTCCCTTGTGGCAAATTTCCAGAAATCAACT
ATTTATTGTACATGTGTGTGGAGCTGTCCTTGCCTTTAGTATGGGCTCATTTTACATGTTTGTTCAGACA
ATCCTTTCCTACCAAATGCAGCCCAAATTCACAGCAAACAAGTCTTCTGGGTCCGACTACTGTTGGTTA
TCTGGTGTGGAGTAAGTGCACTTAGCATGATGACTTGCTCATCAATTTTGTACAGTAGTGATTTTGGTCC
TGATGTAGTACAGAACTACACTGGAACCCGGAGGACAAAGGCTATGTGCTTACCTGGTTACTACGGCA
GCAGAAATGGTCCATGTCATTTTCTTTTTGGATTTTTCTTACTTATATTCGTGATTTTCAGAAAATTA
CTTTGCGGGTGAAGCCAATTTACATGGATTAACCCTCTATGACTGTTCCTTGCCTGTTAAACAATGA
AAGAACCACCTGCTTTCCAGAGATTTTCAG

**ACGCGTACGCGGCCGCTCGAGCAGAACTCATCTCAGAAGAGGATCTGGCAGCAAATGATATCCTGGATT
ACAAGGATGACGACGATAAGGTTTAA**



[View online »](#)

Protein Sequence: >MR218120 representing NM_026013

Red=Cloning site Green=Tags(s)

```
MWWFQQLSFLPSALVIWTFATFIFSYITAITLHHVDPALPYISDTGTIPPERCLFGVMLNIAAVLGIAT
MYVRYKQVHALNPEENLIIKLNKAGLVLGILSCLGLSLVANFQKSTLFIHVHCGAVLAFSMGSFYMFVQT
ILSYQMOPKIHSKQVFWVRLLLVIWCGVSALSMMTCCSSILYSSDFGPDVVQKLHWNPEDKGYVLLHVVTA
AEWSMSFSFFGFFLTYYIRDFQKITLRVEANLHGLTLYDTPVPCVNNERTPLL SRDFQ
```

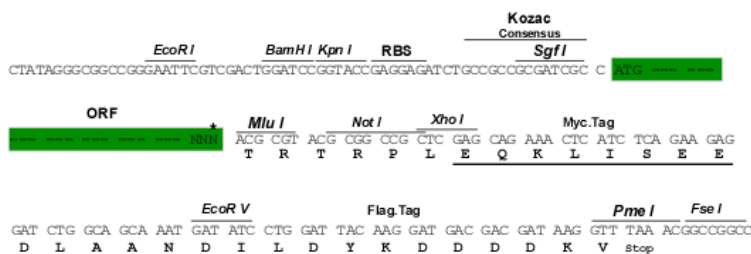
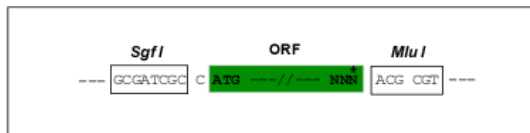
TRTRPLEQKLISEEDLAANDILDYKDDDDKV

Chromatograms: https://cdn.origene.com/chromatograms/mm9028_h05.zip

Restriction Sites: SgfI-MluI

Cloning Scheme:

Cloning sites used for ORF Shuttling:



* The last codon before the Stop codon of the ORF

ACCN: NM_026013

ORF Size: 801 bp

OTI Disclaimer: The molecular sequence of this clone aligns with the gene accession number as a point of reference only. However, individual transcript sequences of the same gene can differ through naturally occurring variations (e.g. polymorphisms), each with its own valid existence. This clone is substantially in agreement with the reference, but a complete review of all prevailing variants is recommended prior to use. [More info](#)

OTI Annotation: This clone was engineered to express the complete ORF with an expression tag. Expression varies depending on the nature of the gene.

Components: The ORF clone is ion-exchange column purified and shipped in a 2D barcoded Matrix tube containing 10ug of transfection-ready, dried plasmid DNA (reconstitute with 100 ul of water).

Reconstitution Method:

1. Centrifuge at 5,000xg for 5min.
2. Carefully open the tube and add 100ul of sterile water to dissolve the DNA.
3. Close the tube and incubate for 10 minutes at room temperature.
4. Briefly vortex the tube and then do a quick spin (less than 5000xg) to concentrate the liquid at the bottom.
5. Store the suspended plasmid at -20°C. The DNA is stable for at least one year from date of shipping when stored at -20°C.

RefSeq: [NM_026013.3](#), [NP_080289.1](#)

RefSeq Size: 2722 bp

RefSeq ORF: 804 bp

Locus ID: 67171

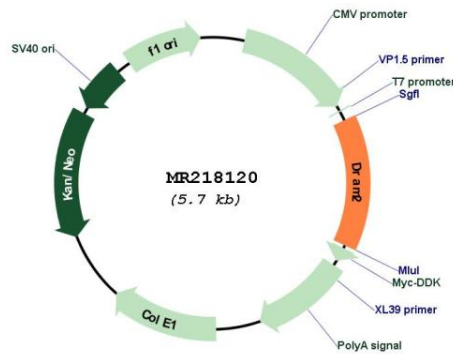
UniProt ID: [Q9CR48](#)

Cytogenetics: 3 F2.3

MW: 30.7 kDa

Gene Summary: Plays a role in the initiation of autophagy. In the retina, might be involved in the process of photoreceptor cells renewal and recycling to preserve visual function. Induces apoptotic cell death when coexpressed with DRAM1.[UniProtKB/Swiss-Prot Function]

Product images:



Circular map for MR218120