

Product datasheet for MR218105

Crls1 (NM_001024385) Mouse Tagged ORF Clone

Product data:

Product Type: Expression Plasmids
Product Name: Crls1 (NM_001024385) Mouse Tagged ORF Clone
Tag: Myc-DDK
Symbol: Crls1
Synonyms: 0610009I22Rik; 4930557M15Rik; 5730490M08Rik
Mammalian Cell Selection: Neomycin
Vector: pCMV6-Entry (PS100001)
E. coli Selection: Kanamycin (25 ug/mL)
ORF Nucleotide Sequence: >MR218105 representing NM_001024385
 Red=Cloning site Blue=ORF Green=Tags(s)

TTTTGTAATACGACTCACTATAGGGCGGCCGGAATTCGTCGACTGGATCCGGTACCGAGGAGATCTGCC
 GCC**CGGATCGCC**

ATGTTGGCTTGGCGCGTGGCGCGCGCGCGTGGGGCCCTCTTCGCGTGGCCCTCCGGCCTCCGGGGGCGC
 GGCTCGGCAGGGGCGGCTCCCGCAGGGCCCTGCTGCCGCCGCGGCCTGCTGCCTCGGCTGCCTGGCTGA
 GCGCTGGCGGCTGCGGCCGGCCGCTTCGCCTTGGCGTGCCTCGCGCGCCGCCCGCGGACCCACTGCTCG
 GCGCGGGGAAGGCAGCCCGGAGCCCGCGCCGAGGAGGAGGTGCCGCGCGCAGGCCCCAGCGCCC
 GATGGGTCCCGGCGAGCGCCAGCTCGTATGAAAATCCATGGACAATCCAAAATTTGTTGTCAATGAC
 AAGAATTGGCCTGGCCCCGTGTTGGGCTACCTGATTCTTGAAGAAGACTTTAATGTTGACTAGGTGTT
 TTTGCTTTAGCCGGGCTAACGGATTTGTTGGATGGATTTATTGCTCGAACTGGGCCAACAAAAATCAG
 CTTTGGGAAGTGCTCTTGATCCACTTGCTGATAAAGTTCTTATCAGCATCTTATATATTAGCTTGACCTA
 TGCAGATCTTATCCAGTCCCACTCACTTACATGATAATTTCAAGAGATGTAATGTTGATCGCTGCTGTG
 TTTTATGTCAGATACCGAACTCTGCCAACCCGGAACACTAGCTAAGTACTTCAATCCTTGCTATGCCA
 CGGCTAGGTTAAAACCAATTCATCAGCAAGGTAATAACAGCAGTCCAGTTAATTTTGGTGGCAGCTTC
 TTTGGCAGCTCCAGTTTCAATTATGCTGACAGCATTTATCTTCAGATACTATGGTGTTCACAGCATTTC
 ACTACAGCTGCATCAGCATACAGTTATTACTATGGTCGAAAACCTGTTCCAGGTGATAAAGGGCAA

ACGCGTACGCGGCCGCTCGAGCAGAAAACCTCATCTCAGAAGAGGATCTGGCAGCAAATGATATCCTGGATT
 ACAAGGATGACGACGATAAGGTTTAA



[View online »](#)

Protein Sequence: >MR218105 representing NM_001024385
Red=Cloning site Green=Tags(s)

MLAWRVARGAWGPLRVALRPPGARLGRGGSRRALLPPAACCLGCLAERWLRPAAFALRLPGAGPRTHCS
 GAGKAAPEPAAGGGGAAAQAPSARWVPSAASSYENPWTIPNLLSMTRIGLAPVLGYLILEEDFNVALGV
 FALAGLTDLLDGF IARNWANQKSALGSALDPLADKVLISILYISLTYADLIPVPLTYMIISRDMVLI
 AAVFYVRYRTLPTPRTLAKYFNPCYATARLKPTFFISKVNTAVQLILVAASLAAPVFNYADSIYLQILWCCTAF
 TTAASAYSYYHYGRKTVQVIKGG

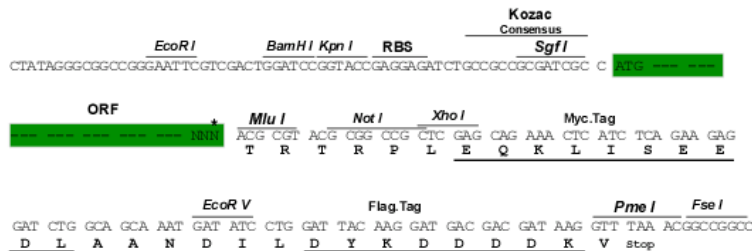
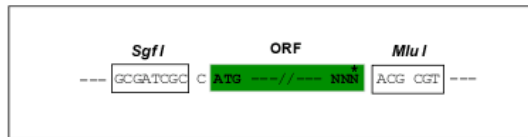
TRTRPLEQKLISEEDLAANDILDYKDDDDKV

Chromatograms: https://cdn.origene.com/chromatograms/mm9023_f05.zip

Restriction Sites: SgfI-MluI

Cloning Scheme:

Cloning sites used for ORF Shuttling:



* The last codon before the Stop codon of the ORF

ACCN: NM_001024385

ORF Size: 909 bp

OTI Disclaimer: The molecular sequence of this clone aligns with the gene accession number as a point of reference only. However, individual transcript sequences of the same gene can differ through naturally occurring variations (e.g. polymorphisms), each with its own valid existence. This clone is substantially in agreement with the reference, but a complete review of all prevailing variants is recommended prior to use. [More info](#)

OTI Annotation: This clone was engineered to express the complete ORF with an expression tag. Expression varies depending on the nature of the gene.

Components: The ORF clone is ion-exchange column purified and shipped in a 2D barcoded Matrix tube containing 10ug of transfection-ready, dried plasmid DNA (reconstitute with 100 ul of water).

Reconstitution Method:

1. Centrifuge at 5,000xg for 5min.
2. Carefully open the tube and add 100ul of sterile water to dissolve the DNA.
3. Close the tube and incubate for 10 minutes at room temperature.
4. Briefly vortex the tube and then do a quick spin (less than 5000xg) to concentrate the liquid at the bottom.
5. Store the suspended plasmid at -20°C. The DNA is stable for at least one year from date of shipping when stored at -20°C.

RefSeq: [NM_001024385.1](#), [NP_001019556.1](#)

RefSeq Size: 1939 bp

RefSeq ORF: 912 bp

Locus ID: 66586

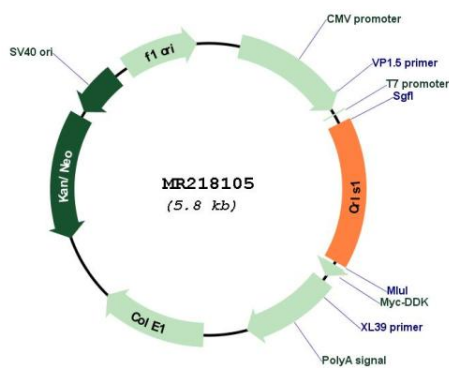
UniProt ID: [Q80ZM8](#)

Cytogenetics: 2 F2

MW: 33 kDa

Gene Summary: Catalyzes the synthesis of cardiolipin (CL) (diphosphatidylglycerol) by specifically transferring a phosphatidyl group from CDP-diacylglycerol to phosphatidylglycerol (PG). CL is a key phospholipid in mitochondrial membranes and plays important roles in maintaining the functional integrity and dynamics of mitochondria under both optimal and stress conditions. [UniProtKB/Swiss-Prot Function]

Product images:



Circular map for MR218105