

Product datasheet for MR218065

Clec4a2 (NM_011999) Mouse Tagged ORF Clone

Product data:

Product Type: Expression Plasmids
Product Name: Clec4a2 (NM_011999) Mouse Tagged ORF Clone
Tag: Myc-DDK
Symbol: Clec4a2
Synonyms: Clec4a; Clecsf6; DCIR; Dcir1
Mammalian Cell Selection: Neomycin
Vector: pCMV6-Entry (PS100001)
E. coli Selection: Kanamycin (25 ug/mL)
ORF Nucleotide Sequence: >MR218065 representing NM_011999
 Red=Cloning site Blue=ORF Green=Tags(s)

TTTTGTAATACGACTCACTATAGGGCGGCCGGAATTCGTCGACTGGATCCGGTACCGAGGAGATCTGCC
 GCC**CGATCGCC**

ATGGCTTCAGAAATCACTTATGCAGAAGTGAAGTTCAAGAATGAATCCAACCTCTTGCACACCTACTCAG
 AATCTCCTGCAGCTCCCAGAGAGAAACCTATCCGTGATCTAAGAAAGCCTGGTCCCCCTACTGCTTCT
 TACATCCCTGATGCTACTTCTCCTGCTGCTGGCAATCACATTCTTAGTTGCTTTTATCATTTATTTCAA
 AAGTACTCTCAACTTCTGAAGAAAAAAGCTGCAAAAAATATAATGCACAATGAATTGAAGTGCACAA
 AAAGTGTTCACCCATGGAAGACAAAGTCTGGAGCTGTTGCCAAAGGATTGGAGGCTATTTGGTTCCCA
 CTGCTACTTGGTCCACAGTTTCTTCATCAGCATCTTGAACAAGAGTGAAGGAGAACTGCTCCCGCATG
 GGTGCTCATCTAGTGGTATCCAAAGCCAGGAAGAGCAGGATTTTCATCACTGGGATCTTGGACACTCATG
 CTGCTTATTTTATAGGGTTGTGGGATACAGGCCATCGGCAATGGCAATGGGTTGATCAGACACCATATGA
 AGAAAGTATCACATTCTGGCACAATGGTGAAGCCAGCAGTGGCAATGAAAAATGTGCTACAATAATTTAC
 CGTTGGAAGACTGGATGGGGCTGGAACGATATCTTGCAGTCTTAAACAGAAGTCAGTTTGCAGATGA
 AGAAAAAACTTA

ACGCGTACGCGGCCGCTCGAGCAGAAACTCATCTCAGAAGAGGATCTGGCAGCAAATGATATCTGGATT
 ACAAGGATGACGACGATAAGGTTTAA



[View online »](#)

Protein Sequence: >MR218065 representing NM_011999
 Red=Cloning site Green=Tags(s)

MASEITYAEVKFKNESNSLHTYSESPAAPREKPIRDLRKPGSPSLLLTSMLLLLLLITFLVAFIIFYQ
 KYSQLLEEKKAANKIMHNELNCTKSVSPMEDKVVWSCCPKDWRLFSGHCYLVPVSSASWNKSEENC SRM
 GAHLVVIQSQEEQDFITGILDTHAAYFIGLWDTGHRQWQWVDQTPYEESITFWHNGEPSSGNEKCATIYY
 RWKTGWGWNDISCSLKQKSVQMKKINL

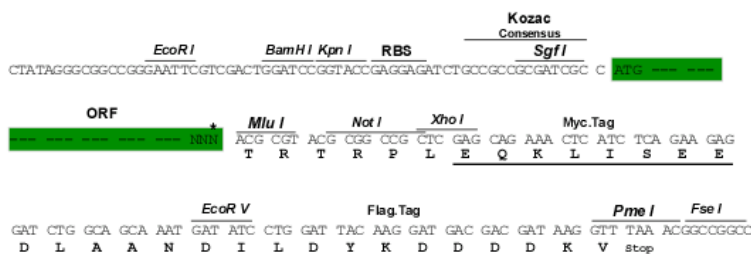
TRTRPLEQKLISEEDLAANDILDYKDDDDKV

Chromatograms: https://cdn.origene.com/chromatograms/mm9028_h04.zip

Restriction Sites: SgfI-MluI

Cloning Scheme:

Cloning sites used for ORF Shuttling:



* The last codon before the Stop codon of the ORF

ACCN: NM_011999

ORF Size: 714 bp

OTI Disclaimer: The molecular sequence of this clone aligns with the gene accession number as a point of reference only. However, individual transcript sequences of the same gene can differ through naturally occurring variations (e.g. polymorphisms), each with its own valid existence. This clone is substantially in agreement with the reference, but a complete review of all prevailing variants is recommended prior to use. [More info](#)

OTI Annotation: This clone was engineered to express the complete ORF with an expression tag. Expression varies depending on the nature of the gene.

Components: The ORF clone is ion-exchange column purified and shipped in a 2D barcoded Matrix tube containing 10ug of transfection-ready, dried plasmid DNA (reconstitute with 100 ul of water).

Reconstitution Method:

1. Centrifuge at 5,000xg for 5min.
2. Carefully open the tube and add 100ul of sterile water to dissolve the DNA.
3. Close the tube and incubate for 10 minutes at room temperature.
4. Briefly vortex the tube and then do a quick spin (less than 5000xg) to concentrate the liquid at the bottom.
5. Store the suspended plasmid at -20°C. The DNA is stable for at least one year from date of shipping when stored at -20°C.

RefSeq: [NM_011999.4](#), [NP_036129.1](#)

RefSeq Size: 2481 bp

RefSeq ORF: 717 bp

Locus ID: 26888

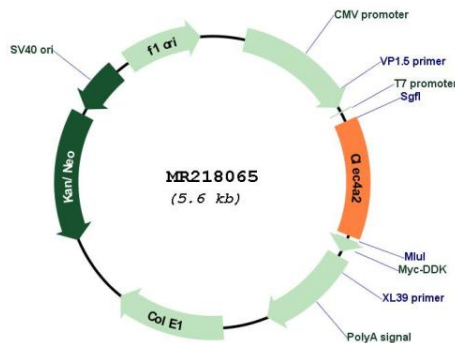
UniProt ID: [Q9QZ15](#)

Cytogenetics: 6 58.18 cM

MW: 27.8 kDa

Gene Summary: May be involved in regulating immune reactivity. May play a role in modulating dendritic cells (DC) differentiation and/or maturation (By similarity). May be involved in the inhibition of B-cell-receptor-mediated calcium mobilization and protein tyrosine phosphorylation. [UniProtKB/Swiss-Prot Function]

Product images:



Circular map for MR218065