

Product datasheet for MR218013

Arap1 (NM_001040112) Mouse Tagged ORF Clone

Product data:

Product Type:	Expression Plasmids
Product Name:	Arap1 (NM_001040112) Mouse Tagged ORF Clone
Tag:	Myc-DDK
Symbol:	Arap1
Synonyms:	2410002L19Rik; Centd2; mKIAA0782
Vector:	pCMV6-Entry (PS100001)
E. coli Selection:	Kanamycin (25 ug/mL)
Cell Selection:	Neomycin
ORF Nucleotide Sequence:	>MR218013 representing NM_001040112 Red=Cloning site Blue=ORF Green=Tags(s)

TTTTGTAATACGACTCACTATAGGGCGGCCGGGAATTCGTCGACTGGATCCGGTACCGAGGAGATCTGCC
GCC**GCGATCGC**C

ATGGCAGAGGGTTACGATGCCGACTGTCTGTAGCTGAGTGGCTGCGGGCACTTCACCTGGAGCAGTACA
CGGCACCTTTGAGCAGCACGGACTGGTGTGGCCACCGAGTGCCAAGGCCTCAGCGATGCTGGCCTGCT
GGACATGGGCATGCACCTCCCCGGCCACCGCCCGCATCCTGGCTGGTCTTCACCGCGCCCATGCACCC
CCGGTCCCTCTGCCTCGCCCCGCCACGGCCCGTGGCGATGAAGCGACACATCTCCGTTACACCACTG
TGCCCGTCACTCCACCAGAGCCGCCGCCACAGCTGGAGAGGATGAGGGTCTGCCTGCCGCTCCACCTAT
CCCACCCCGCAGGAGCTGCCTCCACCTGCCTGCTTCACTCCGACATCCACAGCCGCCCCAGATCCTGTG
CTGCCCCCACTGCCTGCCAAGAGACACTTGGTAGAATCCAGCGTTCCTCCTGTCCCTCCTCGAACCCGGAC
CCCCCTACCCACAGGCCAGCCTTCTTGCTAAGGAGGAGTTACTGCTGCCATCAGTGTACCCCGGTCCCA
ACCAGAGCCTGCAGAGACTCCGTCACCCCTCCTGCCTGCCTTTCCCCAGGGGCCCTGCAGCCTCCGTCT
CCTCCTCCCTGTCTCCTGTGATCCCTCCCAAGCCTCCTCGCTGCTCCCTGAGTTTGACGACTGTGACT
ATGATGATGTCCCGAGGAGGGGCCAGGGGCCAGCCAGTGTGATGACCAAGGAGGAGCCCTGCCGAG
CCGAGTCCACCGGGTGTGCGTGTGGCTAGTCTGCTGAGCGAGGGGAGGAGCTGTCTGGGGATGATGCG
GAAGATGACGATGACCATGCCTATGAGGGTATCCCAATGGTGGGTGGCCAACGAGTGGCCTGAATCCAC
CCTTACGAGCCTGATCCCTGATCTCCCACTGCACCCCATGGATGAGTTGCCTGGGGTCCCACCCCAT
CACACCTGTCAAGGCTGGCTGGCTGGACAAGAACCACACAGGGGTCTTATATCTATCAGAAGCGA
TGGGTGAGACTGGACGCTGATTACCTGCGATACTTTGACAGTAACAAGGACGCCTACTCTAAGCGCTTTG
TTCTGTGGCCTGCATCTGCCGAGTAGCTCCTATTGGAGACCAGAAGTTGAAGTATCACAATAATCG
GACCTTCGCTTCCGGGAGAGAGTGTGTGGAGCGGAACGAGTGGATGCAGGCCCTGCAGCAGGCAGTA
GTTGAGCATCGAGCCGTTTTTCGGCTTTCTAGTGCTTCTGTGTTGGGAGTCCGAGGCTCCGAGCAGCCTG
ACCGTGTGGCAGCCTGGAGCTACGAGGCTTCAAGAATAAGCTTTACGTGGCTGTGACTGGGGACAAAGT
ACAGCTCTATAAGAATCTGGAGGAATCCATCTGGGCATTGGTATCACCTTTATCGACATGAATGTGGGC
AATGTCAAAGGAGTGGATCGGCCGAGCTTTGACCTCACTACCCCTACCGCATCTTCAGTCTCTCGGCTG



View online »

ATTCAGAGTTAGAGAAGGAACAGTGGCTGGAGGCCATGCAGGGAGCCATCGCAGAGGCCCTATCTACCTC
AGAGGTGGCTGAGCGCATCTGGGCCGACGCCCCAACAGGTTCTGTGCCGACTGTGGGGCCGCCAGCCT
GACTGGGCCTCCATCAACCTCTGCGTTGTATCTGCAAGCGCTGTGCAGGGGAGCACCCGCGCTGGGTG
CAGGAGTGTCCAAGGTGCGGAGTTTGAAGATGGACAGGAAGGTGTGGACAGAAGCACTCATCCAGCTCTT
CTTACATCTGGGCAATGGCCCCGGAACCACTTCTGGGCTGCTAATGTGCCTCCTAGTGAGGCCCTGGAG
CCCAGCAGCAGCCCTGGTGCCCCGGGTATCACCTGGAGGCCAAGTACAGAGAGGGCAAGTACCCGCCCT
ACCATCCGCTCTTTGGCAACCAAGAGGAACTGGACAAGGCCCTGTGTGCTGCAGTTACTACCCTGACCT
GGCTGAGACCCAGGCACTCCTGGGCTGTGGGGCTGGGGTCAGCTGCTTCTCAGGGGACCCAGCAGCTCCC
ACACCCCTGGCTCTTGCTGAGCAGGCCGACAGACTCTGCAGATGGAGTTTCTACGGAATAATCAGAGTA
CAGAGGTCCCTCGGTTGGACTCAGTGAAGCCCTTGAAAAGCACTACTCCGTTACCCTGCCAACTGTGAG
CCACAGCGGCTTCTGTACAAAAGTCTTCTGCCGCAAACCTCTGCAGGACCCGCTGCCCGGGAAGAG
TTCAGCCGGCGTGGTGTCTGAGTGTGGGTCCTGAGCTACTATGAAAACGAACGGGCAGTGACAC
CCAATGGGGAGATTCGGGCCAGCGAGATAGTAGCCTAGCAGTTTCCCCTCTGGACCCCATGGCTTTGA
GCACACCTTTGAGGTGTACACAGAGGGAGAACGGCTGTACCTGTTTGGGCTGGAGAATGCAGAGCTGGCT
CATGAGTGGGTCAAGTGCATTGCCAAGGCGTTCGTGCCCTCCCCTGGCTGAGGACCTGCTAGCCCCGGACT
TTGAACGTCTTGGGCGCCTACCCTGTAAAGCTGGCCTGAGCCTTCAGCAGGCTCAGGAAGGCTGGTTTGC
CTTGACTGGCTCTGAGCTCCGGGCTGTCTTCCCAGAGGGGCCCTGGGAAGAGCCGCTGCAGCTCCGAAA
CTGCAAGAGCTTTCTATCCAAGGAGACAGCGAGAACCAAGTGTGGTGGTGGAGCGGAGGAGACAC
TGTACATCCAGGGTGAGCGGGGCTGGACTTTCATGGCTGGCTAGGGGTCCATCCAGAAAGCAGCAGCCAG
CTTGGGAGACACACTATCAGAACAACAGCTTGGGGACTCGGACATCCCAGTGATTGTGTACCCGCTGTGTG
GACTACATCACGCAGTGTGGCTTGACCTCAGAGGGTATCTATCGAAAGTGTGGTCAGACCTCCAAGACTC
AGAGACTGCTAGACAGCCTCCGGCAGGACGCACGCTCTGTGCACCTAAAGGAGGGAGAACAGCACGTGGA
CGACGTCTCCTCTGCACTCAAACGCTTCTCAGGGACCTGCCCGATGGGCTCTTACCGTGGCAGCGC
CTGGCCTGGCTGGAGGCCTCTGAGATCGAGGATGAGGAAGAAAAGATCTCCAGGTATCGAGAGCTTTGG
TGCATCTGCCCTGTCAACCGGCCACTGTGAAGGCCCTTATCAGCCATCTGTACTGTGTACAGTGCTT
CTCAGACACAAACCAATGAACACACACAACCTGGCTATCGTGTTTGGGCTACACTCTTCCAGACAGAC
GGGAGGACTACAAGGCCGCAAGGTGGTGAAGACCTCATCAACCACTACGTGGTGGTGTTCAGTGTGG
ACGAGGAGGAGCTGAGGAAGCAGAGGGAGGAAGTACGGCCATCGTGAAGATGCGAGTGGCTGGCACTGC
CAGTGGGACCCAGCATGCTGGCGACTTCATCTGCACAGTCTACCTGGAGGAGAAGAAGGTGGAGACTGAA
CAGCATGTTAAGATCCCAGCATCCATGACTGCAGAGGAGCTTACTCTGGAGATTCTGGACCCCGCAATG
TGAGCATCAGGGAGAAGGACTACTGGACTTGTCTTGGAGTCAACGAGAAGGAGGAGGAGGAGCGCCGCT
GCACTTTCAGAGAAGGTGCTGCCATTGTCCATGGGCTGGGCATAGACAGCCATCTGGTGGTGAAGAAG
TACCAGTCCATGGAGGCCATGCTGTTGACTTGGCCAGCCGTGTGGGTGACACCAAGCATGGTATGATGA
AGTTCGGTGAAGACCGCAGCCTCCTGGGCTGCGGGCTACCTTCGGGTGGCTTCCACGATCGTACTTTCAT
TCTCAACAGCAGCTGCCACGGCTCTACAAGGAGGTCCGGAGTACCCGGCCTGAGAAGGAGTGGCCTGTC
AAGAGCCTCAAAGTCTACCTGGGTGTAAGAAGAAACTGCGGCCACCTACTTGTGGGGCTTACCGGTGG
TGCACGAGACAGAAAAGCAGGAGAAGCAGCAGTGGTACCTCTGCTGTGACACGCAGATGGAACCTCGAGA
GTGTTTGGCACCTTCTCTCTGTGCAGCAGATGGCCTGGTGTGGCCCTCCGAGCCATCTCGAGTGTCC
CGGGCAGTGCCCTGAGGTCCGGATGGGCAGTGTATCGCTGATCCCTCTACGAGGCAGTGAAAATGAAATGC
GCCGGAGTGTGGCAGCCTTCACTGCTGACCCCTTCCCTTCTCCGCCATGTC

AGCGGACCGACGCGTACGCGCCGCTCGAGCAGAACTCATCTCAGAAGAGGATCTGGCAGCAAATGATATCC
TGGATTACAAGGATGACGACGATAAGGTTTAA

Protein Sequence: >MR218013 representing NM_001040112
 Red=Cloning site Green=Tags(s)

```

MAEGYDAAL SVAEWL RALHLEQY TAFEQHGL VWATECQGL SDAGLLDMGMHLP GHRRRRILAGLHRAHAP
PVPLPRPAPRPVPMKRHIFRSPVPVTPPEPPPTAGEDEGLPAAPPIPRRRSCLPACFTPTSTAAPDPV
LPPLPAKRHLVESSVPPVPPRTGPPYPQASLLAKEELLPSVSPRSQPEPAETPSTLLPAFPQGPLQPPS
PPPCPPVIPPKPRLPEFDSDYDDVPEEGPAPASVMTKEEPLSRVPRAVRVASLLSEGEELSGDDA
EDDDDHAYEGIPNGGWPTSGLNPPLRSLIPDLPLHPMDELPGGPTPITPVIKAGWLDKNPPQGSYIYQKR
WVRLDADYLRYFDSNKDAYSKRFVPVACICRVAPIGDQKFEVITNNRTFAFRAESDVERNEWMQALQQAV
VEHRARFRLSSASVLGVRGSEQPDRAGSLELRGFKNKL YVAVTGDKVQLYKNLEEFHLGIGITFIDMNVG
NVKEVDRRSFDL TTPYRIF SFSADSELEKEQWLEAMQGAIAEALSTSEVAERIWAAPNRF CADCGAAQP
DWASINL CVVICKRCAGEHRGLGAGVSKVRS LKMDRVWTEAL IQLFLHLGNGPGNHFWAANVPSEALE
PSSSPGARRYHLEAKYREGKYRYYHPLFGNQEELDKALCAAVTTDLAETQALLGCGAGVSCFSGDPAAP
TPLALAEQAGQTLQMEFLRNNQSTEVPRLDSVKPLEKHYSVTLPTVSHSGFLYKTASAGKPLQDRRAREE
FSRRWCVLSDGVL SYYENERAVTPNGEIRASEIVCLAVSPLDTHGFEHTFEVYTEGERLYLFGLENAELA
HEWVKCIAKAFVPLAEDLLARDFERLGRLPCKAGLSLQQAQEGWFAL TGSELRAVFPPEGPWEEPLQLRK
LQELSIQGDSENQVLV LVERRRTLYIQGERRLDFMAWLGV IQKAAASL GDTLSEQQLGSDIPVIYRVCY
DYITQCGLTSEGIYRKCQTSKTQRLDLSLRQDARSVHLKEGEQHVDDVSSALKRFLRDLDPGLFTRAQR
LAWLEASIEDEEEKISRYRELLVHLPVNRATVKALISHLYCVQCFSDTNQMNTHNLAI VFGPTLFQTD
GQDYKAGKVVEDL INHYVVVFSVDEEELRKQREEVTAIVKMRVAGTASGTQHAGDFICTVYLEEKKVETE
QHVKIPASMTAEEL TLEILDRRNVSIREKDYWTCFEVNEKEEAERPLHFAEKVLPVHGLGIDSHLVVKK
YQSMEAMLLYLASRVGDTKHGMMKFREDRSLGLGLPSGGFHDRYFILNSSCLRLYKEVRSRHRPEKEWPV
KSLKVYLVGVKKLRPPTCWGFTVVHETEKHEKQQWYLC CDTQMELREWFATFLSVQHDGLVWPSEPSRVS
RAVPEVRMGSVSLIPLRGENEMRRSVA AFTADPLSLLRHV
    
```

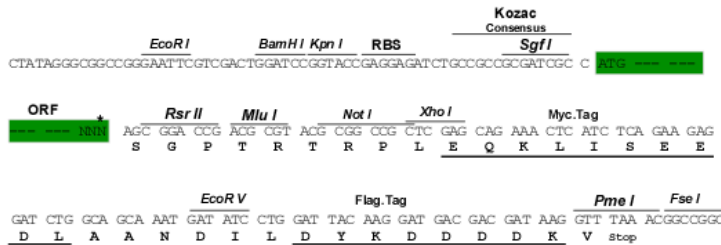
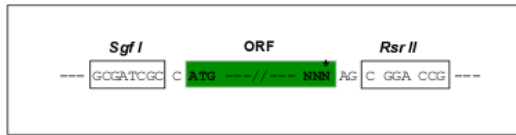
SGPTRRRL**EQKLI**SEEDLAANDILDYKDDDDK**V**

Restriction Sites:

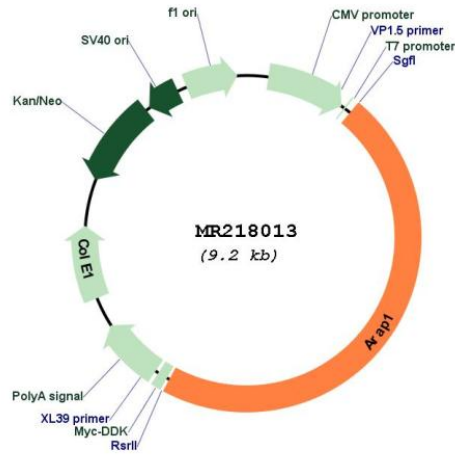
SgfI-RsrII

Cloning Scheme:

Cloning sites used for ORF Shuttling:



* The last codon before the Stop codon of the ORF

Plasmid Map:


ACCN: NM_001040112

ORF Size: 4323 bp

OTI Disclaimer: The molecular sequence of this clone aligns with the gene accession number as a point of reference only. However, individual transcript sequences of the same gene can differ through naturally occurring variations (e.g. polymorphisms), each with its own valid existence. This clone is substantially in agreement with the reference, but a complete review of all prevailing variants is recommended prior to use. [More info](#)

OTI Annotation: This clone was engineered to express the complete ORF with an expression tag. Expression varies depending on the nature of the gene.

Components: The ORF clone is ion-exchange column purified and shipped in a 2D barcoded Matrix tube containing 10ug of transfection-ready, dried plasmid DNA (reconstitute with 100 ul of water).

Reconstitution Method:	<ol style="list-style-type: none">1. Centrifuge at 5,000xg for 5min.2. Carefully open the tube and add 100ul of sterile water to dissolve the DNA.3. Close the tube and incubate for 10 minutes at room temperature.4. Briefly vortex the tube and then do a quick spin (less than 5000xg) to concentrate the liquid at the bottom.5. Store the suspended plasmid at -20°C. The DNA is stable for at least one year from date of shipping when stored at -20°C.
RefSeq Size:	5314 bp
RefSeq ORF:	3582 bp
Locus ID:	69710
UniProt ID:	Q4LDD4
Cytogenetics:	7 E2
MW:	135.1 kDa
Gene Summary:	Phosphatidylinositol 3,4,5-trisphosphate-dependent GTPase-activating protein that modulates actin cytoskeleton remodeling by regulating ARF and RHO family members. Is activated by phosphatidylinositol 3,4,5-trisphosphate (PtdIns(3,4,5)P3) binding. Can be activated by phosphatidylinositol 3,4-bisphosphate (PtdIns(3,4,5)P2) binding, albeit with lower efficiency. Has a preference for ARF1 and ARF5 (By similarity).[UniProtKB/Swiss-Prot Function]