

## Product datasheet for **MR217991**

### **Papd5 (NM\_001164497) Mouse Tagged ORF Clone**

#### **Product data:**

Product Type:	Expression Plasmids
Product Name:	Papd5 (NM_001164497) Mouse Tagged ORF Clone
Tag:	Myc-DDK
Symbol:	Papd5
Synonyms:	5730445M16Rik; 5830428A09
Mammalian Cell Selection:	Neomycin
Vector:	pCMV6-Entry (PS100001)
E. coli Selection:	Kanamycin (25 ug/mL)



[View online »](#)

ORF Nucleotide  
Sequence:

>MR217991 representing NM\_001164497  
 Red=Cloning site Blue=ORF Green=Tags(s)

TTTTGTAATACGACTCACTATAGGGCGGCCGGGAATTCGTCGACTGGATCCGGTACCGAGGAGATCTGCC  
 GCC**CGGATCGCC**

ATGTTCCGCTCGGGGAGCGCCACTGGCGGCCTCGCCGTGCCCGGGAGCAGCGGGACTTCTGCCCC  
 TGGAGACGACCAACAACAACAACATCACCACCAGCCGGCGGCCTGGGCACGGCGGGCATCGGCGGGCCC  
 CTGCGCGTCGCCGGTCCCATCGGCTCCCTCGTCCCGCGACCGCGGCCCACTCCCGCCTCCGAGTCT  
 ACCGACCCGGCCTCGGGCAGCAGCAACAAGAGGAAACGTGACAACAAGGCCAGCACCTACGGACTCAACT  
 ACAGCCTGCTGCAGCCAGCGGAGGGCGCGCGGCCGGAGCGGACGGGCGGACGGCGGGGGCGTGTA  
 CAGCGGGACCCCGTGAAGCGACGGAACACAACCAGGGAGTCTGGGTCTGCATGAAGAAATCAGTGAT  
 TTTTATGAGTACATGTCTCCAGACCCGAGGAAGAGAAGATGCGGATGGAGGTAGTGAGCAGGATCGAGA  
 GTGTGATTAAGAGCTCTGGCCAGTGTGATGCCAGATATTTGGAAGTTTTAAACTGGCCTGTATTT  
 ACCTACCAGTGACATCGATCTTGTGGTGTGGGAAGTGGGAGAACCTGCCTCTCTGGACCTGGAAGAA  
 GCCCTTCGGAAACACAAAGTCGCTGACGAGGATTCGCTGAAAAGTTCTAGACAAAGCAACGGTTCCTATTA  
 TAAATTAACAGATTCTTTACTGAAGTAAAAGTTGATATCAGCTTTAATGTCCAGAATGGCGTGAGAGC  
 AGCAGACCTCATTAAAGATTTTACTAAGAAATATCCTGTATTGCCATACTTGGTTTTAGTATTGAAACAG  
 TTCTTATTACAGAGGGACCTTAATGAAGATTTACAGGTGGAATTGGTCTTATAGTCTCTTTTTAATGG  
 CAGTCAGTTTCTTCAGTTACATCCAGGGAAGATGCTTGATCCCAATACAACTATGGTGTCTCTT  
 AATAGAGTTTTTTGAATTATATGGACGGCACTTCAATTAAGACTGGCATCCGGATAAAGGATGGT  
 GGTTCTATGTGGCCAAAGATGAAGTACAGAAAAATATGCTTGATGGCTACCGGCCGTCATGCTTTATA  
 TCGAAGATCCTTTACAACCAGTAATGATGTTGGAAGGATTCCTATGGGGCCATGCAGTGAAACAGGC  
 CTTTGATTATGCCTATGTGGTATTGAGTCATGCAGTGTCACCGATTGCAAAGTACTATCCAACAATGAA  
 ACAGAGAGCATATTAGGTAGAATAATTAGAGTGACGGATGAAGTTGCCACGTATAGAGATTGGATATCAA  
 AACAGTGGGGCTTGCAGAATAGGCCGAGCCATCATGCAACGGAATGGTGTACCTTGATAGTAGATAC  
 TCAGCAGTTAGATAAGTGAATAATAATCTGTCTGAAGAAAAGGAAGCCCTTGGAAAATGTAGAAGTAAC  
 GCCTCGGAACCTTTAGTAAACTCTTCAAACCTTTCATCAGGTCCAGTGTCTCTCTCTGCCACGC  
 AGTCCAGCTCTAGTGACGTGATTCTGTGCAACGCCATGCAAAACCCCAACAGCTGCTCTGCCGTCC  
 ACCCACTGTACCCGGTAGGCTCACAGGATGTCTCTTGGAGGTCTCTCAGGCAGTTGGGAAAATGCAG  
 AGCACTCAAACCTAACAACACCCAACAACGCCAACAATCACAGCATGGATCAGCAAGGCTCTTCCGTT  
 CTCCAGCAAAGGCTTCCAAGGTACAGCTCAAACCAAGCCATGGGGCCTTGATGACAAGCAAACAGCATCA  
 AGGCAAATCCAATACTCAGTATTACCATGGCAAAAAGAGGAGACACAAGAGGGACGCGCCCTCTCAGAG  
 CTTGTAGA

**ACGCGT**ACGCGGCCGCTCGAGCAGAAACTCATCTCAGAAGAGGATCTGGCAGCAATGATATCCTGGATT  
 ACAAGGATGACGACGATAAGGTTTAA

**Protein Sequence:** >MR217991 representing NM\_001164497  
Red=Cloning site Green=Tags(s)

```
MFRSGERPLGGLAVPAEQRDFLPLETTNNNNHHQPAAWARRASAGPSASPVPSPASSPRPAAALPASES
TDPASGSSNKRRDNKASTYGLNYSLQLPSGGRAAGGGRADGGGGVYSGTPWKRRNRYNQGVVGLHEEISD
FYEYMSRPEEEKMRMEVVSRIESVIKELWPSADVQIFGSFKTGLYLPTSDIDL VVFGKWENLPLWTL EE
ALRKHKVADEDSVKVLDKATVPIIKLTDSFTEVKVDISFNVQNGVRAADLIKDFTKKYPVLPYLVLVLKQ
FLLQRDLNEVFTGGIGSYSLFLMAVSFLQLHPREDACIPNTNYGVLLIEFFELYGRHFNYLKTGIRIKDG
GSYVAKDEVQKNMLDGYRPSMLYIEDPLQPGNDVGRSSYGAMQVKQAFDYAYVVL SHAVSPIAKYYPNNE
TESILGRIIRVTDEVATYRDWISKQWGLQNRPEPSCNGVTLIVDTQQLDKCNNNLSEEKEALGKCRSN
ASEPLSKHSSNSSSGPVSSSSATQSSSSDVSDATPCKTPKQLL CRPPTVTRVGSQDVSLEVSQAVGKMQ
STQTTNTPNNANKSQHGSARLFRSSSKGFQGTATSHGALMTSKQH QGKSNTQYYHGKRRRHKRDAPLSE
LCR
```

TRTRPLEQKLISEEDLAANDILDYKDDDDKV

**Restriction Sites:**

SgfI-MluI

**Cloning Scheme:**



**ACCN:** NM\_001164497

**ORF Size:** 2040 bp

**OTI Disclaimer:** The molecular sequence of this clone aligns with the gene accession number as a point of reference only. However, individual transcript sequences of the same gene can differ through naturally occurring variations (e.g. polymorphisms), each with its own valid existence. This clone is substantially in agreement with the reference, but a complete review of all prevailing variants is recommended prior to use. [More info](#)

**OTI Annotation:** This clone was engineered to express the complete ORF with an expression tag. Expression varies depending on the nature of the gene.

**Components:** The ORF clone is ion-exchange column purified and shipped in a 2D barcoded Matrix tube containing 10ug of transfection-ready, dried plasmid DNA (reconstitute with 100 ul of water).

**Reconstitution Method:**

1. Centrifuge at 5,000xg for 5min.
2. Carefully open the tube and add 100ul of sterile water to dissolve the DNA.
3. Close the tube and incubate for 10 minutes at room temperature.
4. Briefly vortex the tube and then do a quick spin (less than 5000xg) to concentrate the liquid at the bottom.
5. Store the suspended plasmid at -20°C. The DNA is stable for at least one year from date of shipping when stored at -20°C.

**RefSeq Size:** 4642 bp

**RefSeq ORF:** 2043 bp

**Locus ID:** 214627

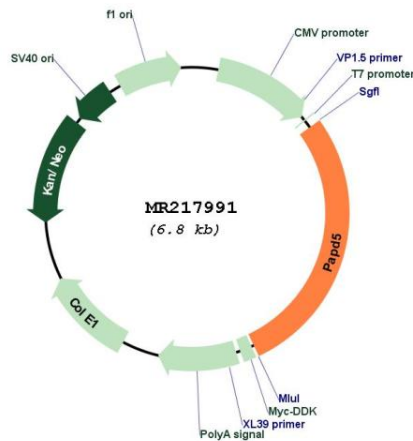
**UniProt ID:** [Q68ED3](#)

**Cytogenetics:** 8 C3

**MW:** 74.7 kDa

**Gene Summary:** Terminal nucleotidyltransferase that catalyzes preferentially the transfer of ATP and GTP on RNA 3' poly(A) tail creating a heterogeneous 3' poly(A) tail leading to mRNAs stabilization by protecting mRNAs from active deadenylation (By similarity). Also functions as a catalytic subunit of a TRAMP-like complex which has a poly(A) RNA polymerase activity and is involved in a post-transcriptional quality control mechanism. Polyadenylation with short oligo(A) tails is required for the degradative activity of the exosome on several of its nuclear RNA substrates. Doesn't need a cofactor for polyadenylation activity (in vitro). Plays a role in replication-dependent histone mRNA degradation, probably through terminal uridylation of mature histone mRNAs. May play a role in sister chromatid cohesion (By similarity).[UniProtKB/Swiss-Prot Function]

**Product images:**



Circular map for MR217991