

Product datasheet for **MR217926**

Nrg2 (NM_001167891) Mouse Tagged ORF Clone

Product data:

Product Type:	Expression Plasmids
Product Name:	Nrg2 (NM_001167891) Mouse Tagged ORF Clone
Tag:	Myc-DDK
Symbol:	Nrg2
Synonyms:	Don1; NTAK
Mammalian Cell Selection:	Neomycin
Vector:	pCMV6-Entry (PS100001)
E. coli Selection:	Kanamycin (25 ug/mL)



[View online »](#)

ORF Nucleotide
Sequence:

>MR217926 representing NM_001167891
Red=Cloning site Blue=ORF Green=Tags(s)

TTTTGTAATACGACTCACTATAGGGCGGCCGGGAATTCGTCGACTGGATCCGGTACCGAGGAGATCTGCC
GCC**GCGATCGCC**

ATGCGGCAGGTTTGTCTGCTCAGCGCTGCCGCCCACTGGAGAAGGCTCGGTGCAGCAGCTACAGCTACA
GTTACAGCGACAGCAGCAGCAGCACACCAGCAGCAGCAGAAGCAGCAGCAGCAGCAGCAAACAG
CAGCAGCAGCAACAGCAGCAGCAGCAGCAGCAGCAGCAGCAGCAGCAGCAGCAGCAGCAGCAGCAG
GCTGCGCCCCAGAGCCGCGCCGCGCAGCCACAGCCGCGAGCCCCGAGCCCCGAGCCGGAGAGCCGCCG
CCCGCTCGCGAGCCGAGCCGCCGGCGGCATGAGGCGGACCCGGCCCCGGCTTCTCGATGCTGCTCTT
CGGTGTGCTACTCGCTGCTACTCGCCAGCCTCAAGTCGGTGCAGGACCAGGCGTACAAGGACCCCGTG
GTGGTGGAGGGCAAGGTACAGGGACTGGCCCCGGCAGGCGGTTCCAGCTAACAGCACCCGAGAGCCGC
CCGCCCTCGGGTCGGGTGGCGCTGGTGAAGGTGCTGGACAAGTGGCCGCTCCGGAGCGGGGGGCTGCAGCG
CGAGCAGGTGATCAGCGTGGGCTCCTGTGCGCCGCTCGAAAGGAACCAGCGCTACATCTTTTCTGGAG
CCCACCGAGCAGCCCTTAGTTTTAAGACAGCCTTTGCCCGGTGACCCCTAACGGCAAAAAACATCAAGA
AAGAGGTGGGCAAGATCCTGTGCTACTGCGCCACCCGGCCCAAGCTGAAGAAGATGAAGAGCCAGAC
AGGAGAGGTGGGTGAGAAGCAGTCGCTCAAGTGTGAGGCAGCGCGGAAACCCCGACCCCTCTATCGC
TGGTTCAAGGATGGCAAGGAACCTCAACCGAGTCGTGATATTCCGATCAAGTATGGCAATGGCAGAAAGA
ACTCACGGCTACAGTTCAACAAAGTGAAGGTGGAGGATGCCGGGGAGTACGTCTGTGAGGCCGAGAATC
CCTTGGGAAGGACACCGTGAGGGGCCACTCCATGTCAACAGCGTGAGCACCCTCTGTCTCTGGTGG
GGCATGCCCGGAAGTGAATGAGACCCCAAGTCCCTACTGTGTAATGGAGCGTGTGCTACTACATCGC
TTTGCATTGTACATGCCAGATCCTAAGCAAAAGGCTGAGGAGCTGTACCAGAAGAGAGTGTGACTGACAATT
ACTGGTATCTGTGTGGCCCTGCTGGTGTGGGATCGTGTGTTGGTTCGCTACTGCAAGACCAAAAAAC
AGAGGAGGCAGATGCATCATCTCCGGCAGAACATGTGCCAGCCACCAGAACCAGCCTGGCCAA
CGGGCCACGCCACCTCGCTGGACCTGAGGAGATCCAGATGGCAGATTACATCTCAAAAAATGTGCCA
GCTACAGACCACGTGATCCGGAGGGAAGCTGAGACCAGTTCTCTGGGAGCCACTCTGTTACCTTCTC
ACCACTGCTCCACAGCCACGCCACCTCCAGCCACAGACATGAGAGCCACACGTGGAGCCTGGAACGTT
AGAGAGCCTGACCTCGGATTCCCAGTCAGGCATCATGCTATCATCAGTAGGACCCAGCAAGTGAACAGC
CCAGCATGTGTGGAGGCACGGGCGGGAGGGCAGCAGCCTACAGCCAGGAGGAGCGGCGCAGGGCTGCCA
TGCCACCCTACCATGACTCCATAGACTCGCTGCGTACTCTCCACACAGTGAAAGGTACGTGTCAGCCTT
GACCACGCCCGCTCGCCTCTCGCCCGTGGACTTCCACTACTCGCTGGCCACGCAGGTGCCGACTTTCGAG
ATCACGTGCGCCAACTCTGCGCATGCCGTGTGCTGTCGCTGCCGCCCGCCGCGCCATCAGCTACCGCTGGCGG
AGCAGCAGCCGCTCCTGCGGCATCCAGCGCCGCGGCGCCGGGGCGGGGTCGGGCGCCGGAGCGGACAT
GCAGCGCAGCTACGACAGCTACTACTACCTGCGGCGGGCCCGGGCGCGGCGCAGCGCCTGCGCGCTG
GGAGGCAGCTTGGGACAGCTGCCCGCCAGCCCCCTCCGCATCCCGGAGGACGACGAGTACGAGACCACGC
AGGAGTGCGCGCCCCGCGCGCCGCGGCGCGCACGCGCGGCGCTCCCGCAGGACGTGCGCGGGGCC
GCGGCGCTGGCGGCGCTCCCGGCTCAACGGTTGGCGGCGCAGCGCGCACGCGCGCGGGACTCGCTG
TCATTGAGCAGCGGTTTCGGGTGCGGCTCGGCGTCCGCGCTCGGACGACGCGGACGACGCGGAGCGGGG
CGCTGGCGGCGGAGAGCACGCCATTCTCGGCTGCGAGCGGCGCACGACGCGTTGCGCTCGGACTCGCC
GCCGCTGTGCCCGCGGCCGACAGCAGGACTTACTACTCCTGGACAGCCACAGCACGCGCGCCAGCAGC
AGACACAGCCGGGGCCGCCACAGGGCCAAGCAGGACTCGGGGCCCTC

AG**CGGACCG**ACGCGTACGCGGCCGCTCGAGCAGAACTCATCTCAGAAGAGGATCTGGCAGCAAATGATATCC
TGGATTACAAGGATGACGACGATAAGGTTTAA

Protein Sequence: >MR217926 representing NM_001167891
Red=Cloning site Green=Tags(s)

MRQVCCSALPPPLEKARCSSYSYSYSDSSSTTSSSRSSSSSSSRNSSSSNSSSESSGSNSGSSSIFRP
 AAPPEPRPQPQPQRSPAARRAAARSRAAAAGGMRRDPAPGFSMLLFGVSLACYSPLKSVQDQAYKAPV
 VVEGKVQGLAPAGGSSSNSTREPPASGRVALVKVLDKWPLRSGGLQREQVISVGCAPLERNQRYIFFLE
 PTEQPLVFKTAFAPVDPNGKNIKKEVGIKILCTDCATRPKLKMKKMQTGEVGEKQSLKCEAAAGNPQPSYR
 WFKDGKELNRSRDIRIKYGNRKNRSLQFNKVRVEDAGEYVCEAENILGKDTVGRGLHVNSVSTLSSWS
 GHARKCNETAKSYCVNGGVCIYIEGINQLSCKCPNGFFGQRCELEKPLRLYMPDPKQKAEELYQKRVLTI
 TGICVALLVVGIVCVVAYCKTKKQRRQMHHHLRQNMCPAHQNRSLANGPSPRLDPEEIQMADYISKNPV
 ATDHVIRREAETTFSGSHSCSPSHHCSTATPTSSRHESHWSLERSSELTSDSQSGIMLSSVGTSKCNS
 PACVEARARRAAAYSQEERRRAAMPYHDSIDSLRDSPHSERYVSAL TTPARLSPVDFHYSLATQVPTFE
 ITSPNSAHAVSLPPAAPISYRLAEQQPLL RHPAPPGP GSGPGADMQRSYDSYYP AAGPGRRSACAL
 GGSLSLSPASFRIPEDDEYETTQECAPPPPPRPRTRGASRRTSAGPRRWRRSRLNGLAAQRARAARDSL
 SLSSGSGCGSASASDDDADDADGALAAESTPFLGLRAAHDALRSDSPPLCPAADSRTYYSLSHSTRASS
 RHSRGPTRAKQDSGPL

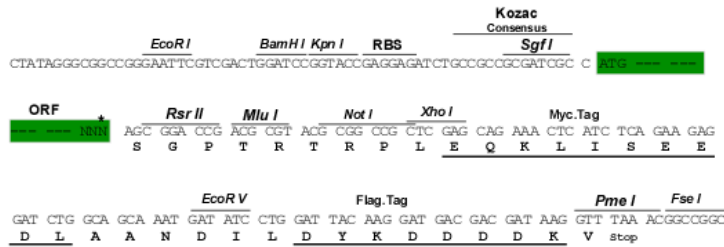
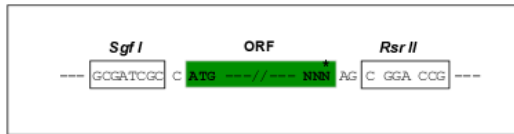
SGPTRTRRLEQKLI SEEDLAANDILDYKDDDDKV

Chromatograms: https://cdn.origene.com/chromatograms/ja1294_c01.zip

Restriction Sites: SgfI-RsrII

Cloning Scheme:

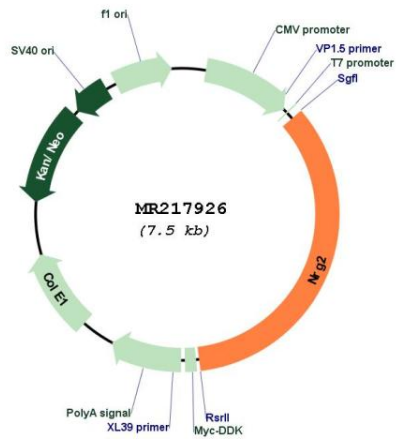
Cloning sites used for ORF Shuttling:



* The last codon before the Stop codon of the ORF

ACCN:	NM_001167891
ORF Size:	2571 bp
OTI Disclaimer:	<p>Due to the inherent nature of this plasmid, standard methods to replicate additional amounts of DNA in E. coli are highly likely to result in mutations and/or rearrangements. Therefore, OriGene does not guarantee the capability to replicate this plasmid DNA. Additional amounts of DNA can be purchased from OriGene with batch-specific, full-sequence verification at a reduced cost. Please contact our customer care team at custsupport@origene.com or by calling 301.340.3188 option 3 for pricing and delivery.</p> <p>The molecular sequence of this clone aligns with the gene accession number as a point of reference only. However, individual transcript sequences of the same gene can differ through naturally occurring variations (e.g. polymorphisms), each with its own valid existence. This clone is substantially in agreement with the reference, but a complete review of all prevailing variants is recommended prior to use. More info</p>
OTI Annotation:	This clone was engineered to express the complete ORF with an expression tag. Expression varies depending on the nature of the gene.
Components:	The ORF clone is ion-exchange column purified and shipped in a 2D barcoded Matrix tube containing 10ug of transfection-ready, dried plasmid DNA (reconstitute with 100 ul of water).
Reconstitution Method:	<ol style="list-style-type: none"> 1. Centrifuge at 5,000xg for 5min. 2. Carefully open the tube and add 100ul of sterile water to dissolve the DNA. 3. Close the tube and incubate for 10 minutes at room temperature. 4. Briefly vortex the tube and then do a quick spin (less than 5000xg) to concentrate the liquid at the bottom. 5. Store the suspended plasmid at -20°C. The DNA is stable for at least one year from date of shipping when stored at -20°C.
RefSeq:	NM_001167891.3
RefSeq Size:	2839 bp
RefSeq ORF:	2574 bp
Locus ID:	100042150
Cytogenetics:	18 19.38 cM
MW:	93 kDa

Product images:



Circular map for MR217926