

## Product datasheet for MR217900

### Foxr2 (NM\_001034894) Mouse Tagged ORF Clone

#### Product data:

Product Type:	Expression Plasmids
Product Name:	Foxr2 (NM_001034894) Mouse Tagged ORF Clone
Tag:	Myc-DDK
Symbol:	Foxr2
Synonyms:	EG436240; Foxn6
Mammalian Cell Selection:	Neomycin
Vector:	pCMV6-Entry (PS100001)
E. coli Selection:	Kanamycin (25 ug/mL)
ORF Nucleotide Sequence:	>MR217900 ORF sequence Red=Cloning site Blue=ORF Green=Tags(s)

TTTTGTAATACGACTCACTATAGGGCGGCCGGAATTCGTCGACTGGATCCGGTACCGAGGAGATCTGCC  
GCC**CGATCGCC**

ATGGATGTAAAGGTAATAAATCGGGACTTCTGGTACAGTCTCCATGGCCAAGTCCCTGGGATGCTGGATT  
GGGACATGGGGAATGAATTTTCTGCCTGTACCATGGATCAGTGCTCTTTCGCTGAGCAGAGTCTCGC  
CAAATATAAAATCCAACGACAAAACACCTGCACTGCCTCAGAAGAAGAAATCCAATTTTGATGATGAT  
GGTCTCCCGCTGAACCCAGCTTGTGGATGTGGTGAATCCCAACATTGTGTGCCCATCAACAGCAAGG  
AGGCTCCAAATACCATTCATAAAATCTGCCAAGTGCACCATTCCACAGACTGGCGAGTCTGACTACTT  
AGGGACCCAGAGAATGGTACAATCCCTGTCTGTTCTCCACACTGAGCATCATCAGCAACAAAAGCTGCTC  
ATTTACTCCACTGCCCTGATTTTCATAGAAGAGGAGACTAAGGAACAGGAATGTACATCCTCCAAGAAAT  
ACTCCAAGAAACACACAGTGTGCCATGGCCCCACCGGAGAAGGAGTCTGGCCACGCCCTCCACTCAA  
CTACAGCCATCTAGTTGCTCTAGCATTAAAAAGCAGCCCTTCTGTGGCCTCAATGTGCAACAGATCTAC  
AATTTTACTCGACAACATTTCCCTTATTTTCGGACAGCACCAGAGGGCTGGAAAAACACCATTGCCCCA  
ACCTCTGCTCCCTGACCTGCTTTGAAAAGGTGCCAGTCGACCTTGAAGATGAGCCAGATGGAAAACTCG  
CTCTTTCTTTGGAAGCTCACTGATGAGGAAACCGATTCTTTCAGGAGGACACCCGTGTCTTGGCCTAT  
GCTCGAAGGGAGAGCATCAAACAGAGCATGCGCCAACAGAGCTGATAGACCTCCTTTTCATCTT

**ACGCGT**ACGCGGCCGCTCGAGCAGAAACTCATCTCAGAAGAGGATCTGGCAGCAAATGATATCCTGGATT  
ACAAGGATGACGACGATAAGGTTAA



[View online »](#)

**Protein Sequence:** >MR217900 protein sequence  
 Red=Cloning site Green=Tags(s)

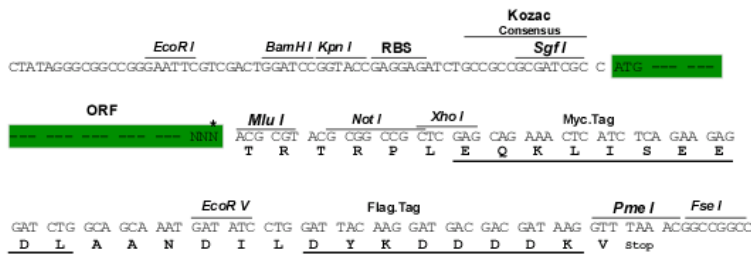
MDVKVKNRDFWYSLHGQVPGMLDWDMGNEFFLPCTMDQCSFAEQSLAKYKIQLTKPPALPQKKKSNFDDD  
 GPPAEPSSLWMWVNPNI VCPINSKEAPNTIHKILPSAPFPQTGESDYLGTQRMVQSLSVLHTEHHQQKLL  
 IYSTAPDFIEEETKEQECTSSKKYSKKHTVCHGPHREKESWPRPLNYSHLVALALKSSPSCGLNVQIY  
 NFTRQHFPYFRTAPEGWKNTIRHNLCSLTCFEKVPVDLEDEPDGKPRSFLWKLTDEGNRFFQEDTRVLAY  
 ARRESIKQSMRQPELIDLLFHL

TRTRPLEQKLISEEDLAANDILDYKDDDDKV

**Restriction Sites:** SgfI-MluI

**Cloning Scheme:**

Cloning sites used for ORF Shuttling:



\* The last codon before the Stop codon of the ORF

**ACCN:** NM\_001034894

**ORF Size:** 909 bp

**OTI Disclaimer:** The molecular sequence of this clone aligns with the gene accession number as a point of reference only. However, individual transcript sequences of the same gene can differ through naturally occurring variations (e.g. polymorphisms), each with its own valid existence. This clone is substantially in agreement with the reference, but a complete review of all prevailing variants is recommended prior to use. [More info](#)

**OTI Annotation:** This clone was engineered to express the complete ORF with an expression tag. Expression varies depending on the nature of the gene.

**Components:** The ORF clone is ion-exchange column purified and shipped in a 2D barcoded Matrix tube containing 10ug of transfection-ready, dried plasmid DNA (reconstitute with 100 ul of water).

**Reconstitution Method:**

1. Centrifuge at 5,000xg for 5min.
2. Carefully open the tube and add 100ul of sterile water to dissolve the DNA.
3. Close the tube and incubate for 10 minutes at room temperature.
4. Briefly vortex the tube and then do a quick spin (less than 5000xg) to concentrate the liquid at the bottom.
5. Store the suspended plasmid at -20°C. The DNA is stable for at least one year from date of shipping when stored at -20°C.

**RefSeq:** [NM\\_001034894.3](#), [NP\\_001030066.1](#)

**RefSeq Size:** 3208 bp

**RefSeq ORF:** 909 bp

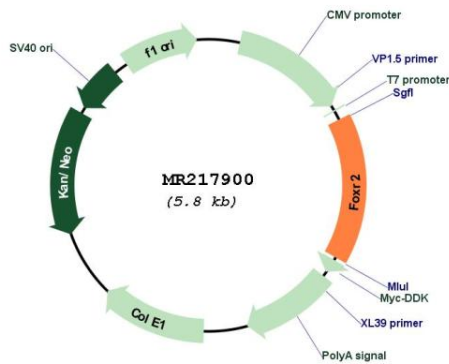
**Locus ID:** 436240

**UniProt ID:** [Q3UM89](#)

**Cytogenetics:** X F3

**MW:** 35 kDa

**Product images:**



Circular map for MR217900