

Product datasheet for MR217833

Clasp1 (NM_177548) Mouse Tagged ORF Clone

Product data:

Product Type:	Expression Plasmids
Product Name:	Clasp1 (NM_177548) Mouse Tagged ORF Clone
Tag:	Myc-DDK
Symbol:	Clasp1
Synonyms:	1700030C23Rik; 5730583A19Rik; B130045P17Rik; mKIAA0622
Vector:	pCMV6-Entry (PS100001)
E. coli Selection:	Kanamycin (25 ug/mL)
Cell Selection:	Neomycin
ORF Nucleotide Sequence:	>MR217833 representing NM_177548 Red=Cloning site Blue=ORF Green=Tags(s)

TTTTGTAATACGACTCACTATAGGGCGCCGGAATTCGTCGACTGGATCCGGTACCGAGGAGATCTGCC
GCC**CGATCGCC**

ATGGAACCGAGAATGGAGTCTGTCTGGCCAGGTGCTGCAGAAGGATGTGGAAAGCGGCTGCAGGTTG
GCCAGAACTCATAGACTATTTCTCAGACAGACAGAAGTCTGCTGACCTTGAGCAGCAGCAGACCCTGTT
GGATAAGCTTGTGGATGGACTCGCTACCTTTGGGTGAAGTCTAGCAATTACAAGTGGTCTCTTTGGGC
ATGGACATCCTGTCCGACTGGTACTAGGCTGCAGGACCGTTCAAGGCGCAAATCGGCACAGTGTTC
CAAGTCTAATAGACAGACTGGGAGATGCTAAAGACTCCGTGAGGGAGCAAGACCAAACCTGCTGCTAAA
GATCATGGATCAAGCTGCTAATCCCAAGTATGTGTGGACAGAATGCTCGGAGGCTTCAAACACAAGAAC
TTCCGCACAAGAGAGGGCATCTGCCTCTGCCTTATTGCAACACTCAATGCCTCTGGGGCCAGACTCTAA
CACTAAGCAAGATTGTGCCACATATATGTAACCTACTGGGAGATCCCAACAGCCAGGTTCCGAGACGCAGC
AATAAACAGTCTGGTGGAGATTTATAGACATGTAGGTGAAGTGTGAGGGCAGACCTCAGTAAGAAAGGA
CTGCCACAGTCCCGTTGAATGTCATTTTTACAAAATTTGATGAAGTCCAAAAGTCTGGAATATGATAC
AGTCTGCAAATGAAAAAATTTGATGATGAAGATTCTGTGGATGGCAACAGGCCCTTCTTCTGCCAGCTC
CTCATCATCCAAGCCCCATCAAGTTCCCGGAGGAATGTTAACCTGGGGACCACCCGTAGGCTCATGTCA
TCCAGTCTGGATCTAAGTCTTCAAGCTGCAAAAAGAAGGCGCTGGTGTGTGGATGAAGAGGATTTTATTA
AAGCCTTTGATGATGTACCTGTAGTGCAGATTTACTCCAGCCGAGACCTCGAGGAATCCATAAACAAAAAT
CAGAGAAATCCTGTCAGATGACAAGCATGACTGGGAGCAGAGAGTAAATGCTCTAAAAAAGATTAGATCG
TTACTCTTGGCTGGGCTGCTGAGTACGATAACTTCTTTCAACACTTGCCTCTTCTGGACGGGGCCTTTA
AACTCTCTGCTAAGGACCTGCGGTCTCAGGTAGTGCAGGAAAGCTTGTATCACATTGGGGCATCTGTCATC
AGTTCTGGGAAAATAAGTTTATGATCATGGAGCTGAAGCCATTATGCCAACTATCTTTAATTTAATCCCGAAC
AGTGCCAAAATTATGGCTACTTCTGGTGTGTAGCTGTTAGGCTAATCATTCCGGCACACTCACATCCCTC
GGCTGATCCCTGTCATAACCAGCAACTGTACCTTAAGTCTGTCGCCGTGAGAAGGCGCTGTTTTGAATT
TTTAGATTTGCTTTTACAAGAATGGCAGACACATTCACTAGAAAGACATATATCAGTATTAGCTGAAACA
ATAAAGAAAGGAATACACGACGCTGATTCTGAAGCGAGAATAGAAGCCAGGAAGTCTACTGGGTTTCC



[View online »](#)

ACAGTCACTTCAGCCGAGAAGCAGAACACCTGTACCACACTTTGGAGTCCTCGTATCAGAAGGCCCTACA
GTCCCCTTGAAGAACTCGGACAGCATCGTGTCTCTGCCCCAGTCAGACCGATCCTCTTCCAGCTCTCAA
GAGAGTCTCAACCGGCCACTTTTCAGCCAAAAGAAGTCCCCTGCGAGCACTGCATCCAGAGGCTCTACAG
TTAGTACCAAATCTGTGTCGACGACAGGATCTCTCCAGCGATCTCGAAGTGATATTGATGTGAACGCAGC
AGCCAGTGCCAAATCCAAAGTCTCTCATCCTCAGGATCCCCGCCTTCAGCTCTGCAGCAGCACTGCC
CCAGGATCCTATGCGTCCCTAGAGTCCAGACACATGAGGGAAGACTTGGAGTACGTAGGCCTGGATGCAG
GTCCGATCCGCACGACGGCAGAGCTCGGGGAGCACCACCAATGTCGCCCTCCACACCCCTCCGACCGCTG
GGCCCGCAGTCGCGCCAAAGTGGTTTACAGTCTCAGCCTGGCAGCCGGTCAAGTTCCTCCCTGGGAAGCTT
TTGGGAAGTGACTTGTGGGGTTCTCCAGAGGCCACCAGGTAACACCATCCTCAGAAAAACGGAGCA
AGATCCCCAGGAGTCAGGGATGTAGCCGAGAAACAAGTCTAACCGGATTGGATTAGATCGGTTTGGGCT
GGGCCAGTCAGGACGAATCCCTGGTTCTGTGAACGCCATGAGAGTCTTGGTACCAGCACTGACCTGGAA
GCAGCAGTGGCTGACGCTCTGAAGAAGCCTGTGAGAAGGAGATACGAGCCCTATGGAATGTACTCTGATG
ATGATGCCAACAGTGATGCCTCCAGCGTGTCTGAGCGCTCATATGGTCCAGGAATGGTGGCATTCC
CCATTATCTGCGCAGACTGAAGATGTAGCAGAGGTTCTCAACCATTGTGCCAGTCCAACCTGGTCAGAA
CGAAAGAGGGGCTCCTGGCCCTGCAGAACTTACTGAAGGCCAAAGAACACTGAGTCGAGTAGAATTGA
AGAGACTGTGAGATTTTACCCGAATGTTTGGCCAGCCTCACAGCAAGAGAGTTCAGTATGTTTTT
GGAGACCTCGTGGATTTATAATCATTATAAGGATGACTTGAAGACTGGCTCTTCGCTCTTCTCACA
CAACTACTTAAGAAAATGGGAGCAGACTTACTTGGATCTGTGCAAGCAAAAGTTCAGAAGGCTCTCGATG
TCACCAGGGATTCCTTTCCATTTGATCAACAATTAACATTTTGTGAGATTTATTGTTGGATCAGACTCA
AACTCCAAACCTCAAGGTCAAAGTAGCAATCCTGAAATACATCGAATCTCTAGCCAGACAGATGGACCCC
ACAGATTTTGTAAATCCAGCGAAACAAGACTAGCTGTTTCTAGGATCATAACATGGACTACAGAACCAA
AGAGTTCAGACGTGAGAAAGGCAGCACAAATTTGCTCATCTCTGTTTGAAGTGAACACGCCTGAATT
TACCATTACTTGGTGCCTTGCCAAAAACATTCAGGATGGTGCCACCAAACCTCTGCATAACCACTC
AAGAACTCCAGTAACACCGGTGTGGATCTCCAAGCAATACAATTGGCCGGACACCTTCCCGCCACCCCA
GCAGCAGGACCAGCCCCGACCTCACCCACCAACTGTTCCCATGGGGACTATCTCCAAGCATGCTGGA
CTATGATACAGAGAACCTGAACTCTGAAGAAATCTACAGCTCTTTGCGTGGAGTTACAGAAGCCATTGAA
AAGTTCAGCTTCCGAAGCCAGGAGGATCTAAATGAGCCAATCAAACGAGATGGCAAGAAGGATTGTGATA
TCGTGTCCCGAGATGGGGGAGCAGCCTCACCTGCCACCGAGGGCCGGGAGGTAGTGAGATAGAAGGAGG
CAGGATGGCTTTGGACAACAAGACCTCCCTGCTCAACACGCAGCCTCCACGTGCCTTTCCGGGGCCAAGA
GCACGGGAATATAACCCGTATCCCTACTCCGACACCATCAACACCTATGACAAGACGGCTCTGAAGGAAG
CAGTGTGTTGACGATGACATGGAGCAGCTCCGAGATGTGCCATTGACCACTCAGACCTGGTGGCTGACTT
GCTGAAAGAGCTATCTAACCCACAACGAGCGTGTGGAGGAGCGGAAGGGCGCACTGCTGGAGTTGCTCAAG
ATCACCCAGGGAGGACAGCCTGGGCGTGTGGGAGGAGCACTTCAAGACCATCCTGTGCTGCTGCTGGAAA
CTCTCGGAGACAAAGACCATTCCATTGAGCTCTGGCACTGAGAGTTTTACGGGAAATCTGAGAAACCA
GCCAGCAAGATTCAAAACTATGCAGAACTGACGATCATGAAGACTCTGGAAGCCCAAAAGACTCCAC
AAGGAGGTGGTGAAGCGGCCGAGGAAGCTGCATCCACGCTAGCCAGCTCAATCCACCCAGAGCAGTGCA
TCAAAGTGTGTCCAATCATCCAGACAGCCGACTACCCCATCAACCTGGCTGCTATCAAGATGCAGAC
AAAGTGGTGGAGAGGATCACAAGGAGTCTTGTGTCAGCTCCTCGTCGACATCATCCCGCCCTGCTG
CAGGGTTACGACAACCCGAGAGCAGTGTACGGAAAGCCAGTGTGTTTTGCTTAGTGGCAATCTATTCCG
TAATCGGAGAAGATCTGAAACCTCACCTCGCACAGCTCACGGGGAGCAAGATGAAGCTGCTGAACCTATA
TATAAAGAGGGCCAGACTACCAACAGCAACAGCAGCTTTCCTCTGATGTGTCCACACACAGC

ACGCGTACGCGGCCGCTCGAGCAGAACTCATCTCAGAAGAGGATCTGGCAGCAATGATATCCTGGATT
ACAAGGATGACGACGATAAGGTTTAA

Protein Sequence: >MR217833 representing NM_177548
 Red=Cloning site Green=Tags(s)

```
MEPRMESCLAQVLQKDVGKRLQVGQELIDYFSDRQKSADLEHDQTLDDKLV DGLATSWVNSSNYKVLLG
MDILSALVTRLQDRFKAQIGTVLPSLIDRLGDAKDSVREQDQTL LLLKIMDQAANPQYVWDRMLGGFKHKN
FRTREGICLCL IATLNASGAQTLT LSKIVPHICNLLGDPNSQVRDAAINSLVEIYRHVGERVADL SKKG
LPQSRLNVIFTKFDEVQKSGNMIQSANEKNFDDSDVDGNRPSSASSSSSKAPSSRRNVNLGTT RRLMS
SSLGSKSSAAKEGAGAVDEEDFIKAFDDVPVQIYSSRDLEESINKIREILSDDKHDWEQVRNALKKIRS
LLLAGAAEYDNFFQHRLLLDGAFKLSAKDLRSQVVREACTITLGHLSVVLGNKFDHGAEAIMPTIFNLIPN
SAKIMATSGVVAVRLIIRHTHIPRLIPVITSNCTSKSVAVRRRCFEFLDLLLQEWQTHSLERHISVLAET
IKKGIHDADSEARIEARKCYWGFHSHFSREAEHLYHTLESSYQKALQSHLKNSDSIVSLPQSDRSSSSSQ
ESLNRPLSAKRSPTGSTASRGSTVSTKSVSTTGS LQRSRSDIDVNAASAKSKVSSSSGSPAFSSAAALP
PGSYASLESRHMRDLEYVGLDAGRIRTRRQSSGTTNVASTPSDSRGRSRAKVVVSQSQPGRSSSSPGKL
LGSGLAGSSRGPPVTPSSEKRSKIPRSQGC SRETS PNRIGLDRFGLGQSGRIPGSV NAMRVLSTSTDL E
AAVADALKKPVR RRYEPYGMYSDDDANSDASSVCSERSYSRNGGIPHYLRQTEDVAEVLNHCASSNWSE
RKEGLLGLQNLK SQRTL SRVELKRLCEIFTRMFADPHSKRVFSMFL ETLVDFII IHKDDLQDWL FVLLT
QLLKKMGADLLGSVQAKVQKALDVTRDSFPFDQQFNILMRFIVDQTQTPNLKVKVAILKYIESLARQMDP
TDFVNSSETRLAVSRIITWTTEPKSSDVRKAAQIVLISL FELNTP EFTMLLGALPKTFQDGATKLLHNHL
KNSNTGVGSPSNTIGRTPSRHPSRTSPLTSP TNC SHGGLSPSMLDYD TENLNSEEIYSSLRGVTEAIE
KFSFRSQEDLNEPIKRDGKKDCDIVSRDGGGA SPATEGRGGSEIEGGRMALDNKTSLLNTQPPRAFPGPR
AREYNPYPSDTINTYDKTALKEAVFDDMEQLRDVPI DHDSDLVADLLKELSNHNERVEERKGALLELLK
ITREDSLGVWEEHFKTILLLLLETLGDKDHSIRALALRVLREILRNQPARFKNYAELTIMKTLEAHKDSH
KEVVRAAEAAASTLASSIHPEQCIKVLCP I IQTADY PINLAAIKMQTKVVERITKESLLQLLVDIIPGLL
QGYDNTESSVRKASVFCLVAIYSVIGEDLKPHLAQLTGSKMKLLNLYIKRAQTTNSSSSSSDVSTHS
```

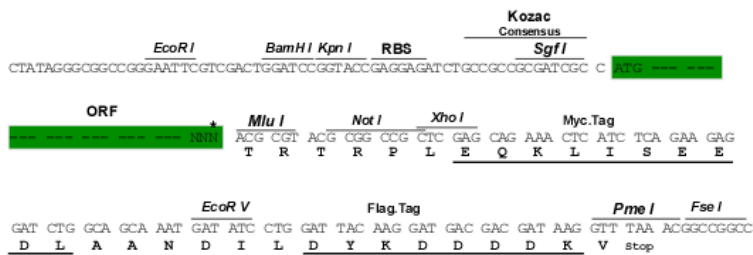
TRTRPLEQKLISEEDLAANDILDYKDDDDKV

Restriction Sites:

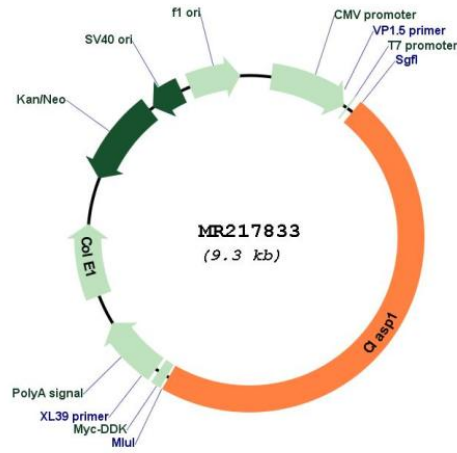
SgfI-MluI

Cloning Scheme:

Cloning sites used for ORF Shuttling:



* The last codon before the Stop codon of the ORF

Plasmid Map:


ACCN: NM_177548

ORF Size: 4404 bp

OTI Disclaimer: The molecular sequence of this clone aligns with the gene accession number as a point of reference only. However, individual transcript sequences of the same gene can differ through naturally occurring variations (e.g. polymorphisms), each with its own valid existence. This clone is substantially in agreement with the reference, but a complete review of all prevailing variants is recommended prior to use. [More info](#)

OTI Annotation: This clone was engineered to express the complete ORF with an expression tag. Expression varies depending on the nature of the gene.

Components: The ORF clone is ion-exchange column purified and shipped in a 2D barcoded Matrix tube containing 10ug of transfection-ready, dried plasmid DNA (reconstitute with 100 ul of water).

Reconstitution Method:

1. Centrifuge at 5,000xg for 5min.
2. Carefully open the tube and add 100ul of sterile water to dissolve the DNA.
3. Close the tube and incubate for 10 minutes at room temperature.
4. Briefly vortex the tube and then do a quick spin (less than 5000xg) to concentrate the liquid at the bottom.
5. Store the suspended plasmid at -20°C. The DNA is stable for at least one year from date of shipping when stored at -20°C.

RefSeq: [NM_177548.2](#), [NP_808216.2](#)

RefSeq Size: 7623 bp

RefSeq ORF: 4407 bp

Locus ID: 76707

Cytogenetics: 1 E2.3

MW: 162.6 kDa

Gene Summary: Microtubule plus-end tracking protein that promotes the stabilization of dynamic microtubules. Involved in the nucleation of noncentrosomal microtubules originating from the trans-Golgi network (TGN). Required for the polarization of the cytoplasmic microtubule arrays in migrating cells towards the leading edge of the cell. May act at the cell cortex to enhance the frequency of rescue of depolymerizing microtubules by attaching their plus-ends to cortical platforms composed of ERC1 and PHLDB2. This cortical microtubule stabilizing activity is regulated at least in part by phosphatidylinositol 3-kinase signaling. Also performs a similar stabilizing function at the kinetochore which is essential for the bipolar alignment of chromosomes on the mitotic spindle (By similarity).[UniProtKB/Swiss-Prot Function]