

Product datasheet for **MR217806**

Map4k5 (NM_201519) Mouse Tagged ORF Clone

Product data:

Product Type:	Expression Plasmids
Product Name:	Map4k5 (NM_201519) Mouse Tagged ORF Clone
Tag:	Myc-DDK
Symbol:	Map4k5
Synonyms:	4432415E19Rik; GCKR; KHS; MAPKKKK5
Mammalian Cell Selection:	Neomycin
Vector:	pCMV6-Entry (PS100001)
E. coli Selection:	Kanamycin (25 ug/mL)



[View online »](#)

ORF Nucleotide Sequence:

>MR217806 representing NM_201519
 Red=Cloning site Blue=ORF Green=Tags(s)

TTTTGTAATACGACTCACTATAGGGCGGCCGGAATTCGTCGACTGGATCCGGTACCGAGGAGATCTGCC
 GCC**CGCATCGCC**

ATGGAGGCCCGCTGAGGCCTGCCGCCACATCCTGAGACGGAACCCGCAGCAGCTACGAGCTGGTGC
 AGAGGGTCGGCAGCGGCACCTACGGGGACGTGTACAAGGCCAGAAATGTACATACAGGAGAATTAGCTGC
 AGTAAAGATCATCAAGTTGGAGCCTGGTATGATTTTTCTTTGATTTCAGCAAGAGATATTTATGGTTAAA
 GAATGTAAGCATTGCAACATCGTAGCCTACTTTGGGAGCTATCTCAGTAGGGAGAAGCTGTGGATTTGCA
 TGGAGTACTGGGTGGCGGATCACTTCAAGATATCTATCACGTGACTGGGCCATTATCTGAAATGCAAAAT
 AGCCTACGTCTGCAGAGAGACCTTACAGGGTCTTGCCACTTGCATACTAAAGGCAAAATGCATAGAGAT
 ATCAAAGGTGCAAAATCTTATTAACAGACCATGGTGTGTAATAATAGCTGATTTTGGTGTGGCTGCAA
 AAATTACAGCTACCATTGCAAAGAGGAAGTCCTTCATCGGCACCCCTTACTGGATGGCTCCAGAAGTTGC
 AGCAGTGGAAAAGAAATGGTGGCTACAACCAACTCTGTGATATCTGGGCCGTCGGAATAACAGCAATCGAG
 CTGGGAGAACTGCAGCCGCTATGTTTGACCTGCATCCAATGAGGGCTCTCTTCTTAATGTCAAAAAGTA
 ATTTCCAGCCTCCAAAGCTAAAGGACAAAATAAATGGTCATCGACATCCATAATTTTGTCAAAAATAGC
 ACTAACTAAAAACCCCAAGAAAAGCAACTGCTGAAAGGCTTCTGACTCACACTTTTGTGGGCAGCCA
 GGCCTGTCTCGGGCGCTCGCGGTTGAGCTGTTGGACAAGGTGAGCAATCCGGACAACCATGCTCCCTACA
 GTGAGGGCGATGAGGACGACTTGGAGCCCCACGCAATCATTTCGCATACCATTAGATCAACAAACAGGAA
 TTCCAGAGCGGAGCGGACAGCTTCAGAAATAAACTTTGACAAATTACAATTTGAACTCCTCTGAGAAAA
 GAAACAGAAGCCCGGGATGAAATGGGATTATCATCAGAGCCAACTTTATATTACATTGGAATCCTTTTG
 TGGATGGAGCAAAATACAGGCAGATCAACCTCTAAGCGTGCAATACCACCTCCGCTACCTCCTAAGCCGAG
 GGTCAACACTTACCCTGAAGACAGCCTCCAGATGAAGAAAAATCATCAACCATCAAACGTTGCCCTGAT
 CTGGAGGCGAGAGCACCTCAGGTCTCAGAAGACAGAGTAGCCCAAGTTGTTCCTGTGGCGGAGACAT
 CCTCCTCTATAGGAAATGGTGTGGTATTTCAAACTGATCAGTAAAAATACAGAGGGATCCGCACAAGC
 TCCGCAGTTACCTCGAAAAAGGACAAGCGGGACTTCCCAAAACCAACCATCAATGGCCTTCCACCCACC
 CCAAAAGTACTGATGGGAGCATGTTTTTCAAAAGTATTTGATGGCTGCCCTTTGAAAAATTAATTGTGCAA
 CATCCTGGATACACCCTGATACAAAAGATCAGTATATTATTTTGGAACTGAAGATGGTATTTACACATT
 GAATCTCAATGAGCTACATGAAGCAACTATGGAACAGTATTTCCACGGAATGTACGTGGCTCTACGTC
 ATCAATAATACACTGATGTCATTATCAGAAGGAAAAACCTTTCAGCTCTACTCTCACACCTTATTGCTT
 TGTTTGAACAAGCAAAAAACCAGGGTTAGCCGCCACATCCAAACTCACAGTTTCTGACCGCATTCT
 GCCAAGAAAAATTTGCCTTAACTAAGATTCCCGATACAAAAGGCTGCCACAAATGCTGCATAGTTAGA
 AACCTTACACGGGACATAAGTACCTCTGTGGAGCTTTGAGTCTGGCATCGTTCTGCTTCAAGTGGTATG
 AGCCGATGCAGAAATTCATGCTGATAAAGCATTTCGATTTTCTTTACCAAGTCCACTGAATGTTTTTGA
 AATGCTGGTATCCCAGAGCAGGAGTACCCATGGTTTGTGTGGCTATCAGCAAAGGCTCGGACTCCAGC
 CAAGTAGTTCAAGTTGAGACAATCAACTTGAATTCTGCATCTTCTGGTTTACAGAAATGGTGCAGGCA
 GCCAACAGCTGGATTCCATTATGTGACACAGTTGGAGAGAGATACTGTTTTGGTGTGTTAGACAAATT
 TGTAATAATGTAATCTACAAGGAAAGCTGAAGTCCAGTAAGAAGCTGGCATCTGAGCTCAGTTTTGAC
 TTCCGCATTGAGTCTGTGGTGTGCCTTCAAGACAGCGTGTGGCTTTCTGGAAACACGGGATGCAGGGTA
 AAAGCTTCAAATCAGATGAGTTACCCAGGAAATTTAGATGAGACCAGGGTTTTCCGCCTGCTGGGATC
 AGACAGGGTGGTGGTTTTGGAAAGCCGGCCAACAGAAAACCTGCAGCACACAGCAATCTCTACATCCTG
 GCTGGACATGAAAACAGTTAC

ACGCGTACGCGGCCGCTCGAGCAGAACTCATCTCAGAAGAGGATCTGGCAGCAATGATATCCTGGATT
 ACAAGGATGACGACGATAAGGTTTAA

Protein Sequence: >MR217806 representing NM_201519
 Red=Cloning site Green=Tags(s)

MEAPLRPAADILRRNPQHLYELVQRVSGTYGDVYKARNVHTGELAAVKIIKLEPGDDFSLIQQEIFMVK
 ECKHCNIVAYFGSYLSREKLWICMEYCGGSLQDIYHVTGPLSEMQUIAYVCRETLQGLAYLHTKGMHRD
 IKGANILLTDHGDVKLADFGVAAKITATIAKRKSFIGTPYWMapeVAAVEKNGGYNQLCDIWAvgITAIE
 LGELQPPMFDLHPMRALFLMSKSNFQPPKLKDKTKWSSTFHNFVKIALTKNPKKRPTAERLLTHTFVGQP
 GLSRALAVELLDKVSNPDNHAPYSEGEDDLEPHAIIRHTIRSTNRNSRAERTASEINFDKLFEPPLRK
 ETEARDEMGLSSEPNFILHWNPFVDGANTGRSTSKRAIPPLPPKPRVNTYPEDSLPDEEKSSSTIKRCPD
 LEARAPQVLRQSSPSCVPVAETSSSIGNGDGISKLISENTEGSAQAPQLPRKDKRDFPKPTINGLPPT
 PKVLMGACFSKVFdGcPLKINCATSWIHPDtkDQYIIFGTEDGIYTLNLNELHEATMEQLFPRKCTWLYV
 INNTLMSLSEGKTFQLYSHNLIALFEQAKKPLAAHIQTHRFPDRILPRKFALTTKIPDTKGCHKCCIVR
 NPYTGHKYLCGALQSGIVLLQWYEPMQKFMlikHFDfPLPSPLNvfEMLVIPEQEYPMVCVAISKGSDSS
 QVVQFETINLSASSWFTEIGAGSQQLDSIHVTQLERDTVLVCLDKFVKIvNLQgKlKSSKklASELSFD
 FRIESVCLQDSVLAfwKHGMQgKsFKSDEVTQEISDETRVFRLLGSDRVVvLESrPTENpAAHSNLYIL
 AGHENSY

TRTRPLEQKLISEEDLAANDILDYKDDDDKV

Restriction Sites:

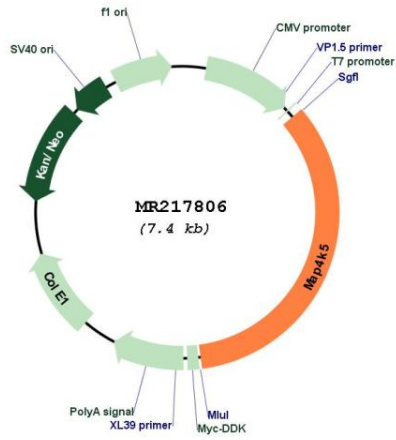
Sgfl-MluI

Cloning Scheme:



ACCN:	NM_201519
ORF Size:	2541 bp
OTI Disclaimer:	The molecular sequence of this clone aligns with the gene accession number as a point of reference only. However, individual transcript sequences of the same gene can differ through naturally occurring variations (e.g. polymorphisms), each with its own valid existence. This clone is substantially in agreement with the reference, but a complete review of all prevailing variants is recommended prior to use. More info
OTI Annotation:	This clone was engineered to express the complete ORF with an expression tag. Expression varies depending on the nature of the gene.
Components:	The ORF clone is ion-exchange column purified and shipped in a 2D barcoded Matrix tube containing 10ug of transfection-ready, dried plasmid DNA (reconstitute with 100 ul of water).
Reconstitution Method:	<ol style="list-style-type: none">1. Centrifuge at 5,000xg for 5min.2. Carefully open the tube and add 100ul of sterile water to dissolve the DNA.3. Close the tube and incubate for 10 minutes at room temperature.4. Briefly vortex the tube and then do a quick spin (less than 5000xg) to concentrate the liquid at the bottom.5. Store the suspended plasmid at -20°C. The DNA is stable for at least one year from date of shipping when stored at -20°C.
RefSeq:	NM_201519.2 , NP_958927.2
RefSeq Size:	4490 bp
RefSeq ORF:	2544 bp
Locus ID:	399510
UniProt ID:	Q8BPM2
Cytogenetics:	12 C2
MW:	95.5 kDa
Gene Summary:	May play a role in the response to environmental stress. Appears to act upstream of the JUN N-terminal pathway (By similarity).[UniProtKB/Swiss-Prot Function]

Product images:



Circular map for MR217806