

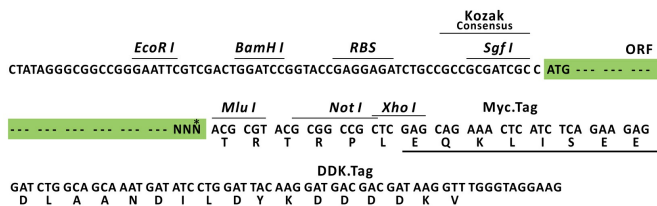
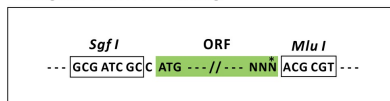
Product datasheet for MR217768L3

Ksr1 (NM_013571) Mouse Tagged Lenti ORF Clone

Product data:

Product Type:	Expression Plasmids
Product Name:	Ksr1 (NM_013571) Mouse Tagged Lenti ORF Clone
Tag:	Myc-DDK
Symbol:	Ksr1
Synonyms:	AW492498; B-KSR1; D11Bhm183e; D11Bhm184e; hb; Ksr; mKSR1; RSU2
Mammalian Cell Selection:	Puromycin
Vector:	pLenti-C-Myc-DDK-P2A-Puro (PS100092)
E. coli Selection:	Chloramphenicol (34 ug/mL)
ORF Nucleotide Sequence:	The ORF insert of this clone is exactly the same as(MR217768).
Restriction Sites:	SgfI-MluI
Cloning Scheme:	

Cloning sites used for ORF Shuttling:



* The last codon before the Stop codon of the ORF.

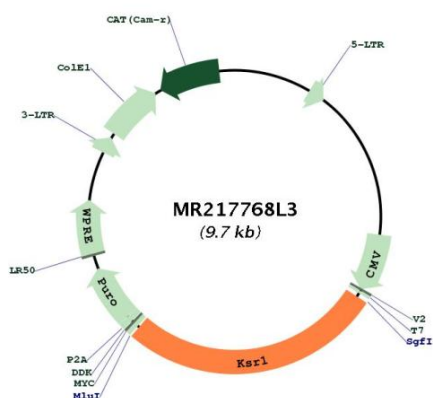
ACCN:	NM_013571
ORF Size:	2619 bp



[View online »](#)

OTI Disclaimer:	The molecular sequence of this clone aligns with the gene accession number as a point of reference only. However, individual transcript sequences of the same gene can differ through naturally occurring variations (e.g. polymorphisms), each with its own valid existence. This clone is substantially in agreement with the reference, but a complete review of all prevailing variants is recommended prior to use. More info
OTI Annotation:	This clone was engineered to express the complete ORF with an expression tag. Expression varies depending on the nature of the gene.
Components:	The ORF clone is ion-exchange column purified and shipped in a 2D barcoded Matrix tube containing 10ug of transfection-ready, dried plasmid DNA (reconstitute with 100 ul of water).
Reconstitution Method:	<ol style="list-style-type: none">1. Centrifuge at 5,000xg for 5min.2. Carefully open the tube and add 100ul of sterile water to dissolve the DNA.3. Close the tube and incubate for 10 minutes at room temperature.4. Briefly vortex the tube and then do a quick spin (less than 5000xg) to concentrate the liquid at the bottom.5. Store the suspended plasmid at -20°C. The DNA is stable for at least one year from date of shipping when stored at -20°C.
RefSeq:	NM_013571.2
RefSeq Size:	4087 bp
RefSeq ORF:	2622 bp
Locus ID:	16706
UniProt ID:	Q61097
Cytogenetics:	11 46.74 cM
Gene Summary:	Scaffolding protein that is part of a multiprotein signaling complex. Promotes phosphorylation of Raf family members and activation of downstream MAP kinases (PubMed:10409742, PubMed:12932319, PubMed:21102438). Promotes activation of MAPK1 and/or MAPK3, both in response to EGF and to cAMP (PubMed:21102438). Does not have kinase activity by itself (Probable).[UniProtKB/Swiss-Prot Function]

Product images:



Circular map for MR217768L3