

Product datasheet for **MR217768**

Ksr1 (NM_013571) Mouse Tagged ORF Clone

Product data:

Product Type:	Expression Plasmids
Product Name:	Ksr1 (NM_013571) Mouse Tagged ORF Clone
Tag:	Myc-DDK
Symbol:	Ksr1
Synonyms:	AW492498; B-KSR1; D11Bhm183e; D11Bhm184e; hb; Ksr; mKSR1; RSU2
Mammalian Cell Selection:	Neomycin
Vector:	pCMV6-Entry (PS100001)
E. coli Selection:	Kanamycin (25 ug/mL)



[View online »](#)

ORF Nucleotide Sequence:

>MR217768 representing NM_013571
 Red=Cloning site Blue=ORF Green=Tags(s)

TTTTGTAATACGACTCACTATAGGGCGGCCGGGAATTCGTCGACTGGATCCGGTACCGAGGAGATCTGCC
 GCC**CGGATCGCC**

ATGGATAGAGCGCGTTGCGCGCGGCAGCGATGGCGGAGAAAAAGGAGGGCGCGCGGGGGCGCCGCGG
 CGGACGGGGGCGCAGGGGCCCGCTCAGCCGGGCGCTGCAGCAGTGCGGCCAGCTGCAGAAGCTCATCGA
 TATCTCCATCGGCAGTCTGCGCGGGCTGCGCACCAAGTGCTCAGTGTCTAACGACCTCACACAGCAGGAG
 ATCCGGACCCTAGAGGCAAAGCTGGTGAATACATTTGCAAGCAGCAGCAGAGCAAGCTTAGTGTGACCC
 CAAGCGACAGGACCGCCGAGCTCAACAGCTACCCACGCTTCAGTGACTGGCTGTACATCTTCAACGTGAG
 GCCTGAGGTGGTGCAGGAGATCCCCAAGAGCTCACACTGGATGCTCTGCTGGAGATGGACGAGGCCAAA
 GCCAAGGAGATGCTGCGGCGCTGGGGGGCCAGCACGGAGGAGTGCAGCCGCTACAGCAAGCCCTTACCT
 GCCTTCGGAAGGTGACTGGCCTGGGAGGGGAGCACAAAATGGACTCAGGTTGGAGTTCAACAGATGCTCG
 AGACAGTAGCTTGGGGCCTCCCATGGACATGCTTTCCTCGCTGGGCAGAGCGGGTCCAGCACTCAGGGA
 CCCCCTTCCATCTCCGTGTCGGCCCTGCCTGCCTCAGACTCTCCGGTCCCGGCCCTCAGTGAGGGCCTCT
 CGGACTCCTGTATCCCCTTGACACCAGCGGCCGGCTGACCCCCGGGCCCTGCACAGCTTCATCACGCC
 CCCTACCACACCCAGCTACGACGGCACGCCAAGCTGAAGCCACCAAGGACACCCCAACCGCAAGCCGC
 AAGGTCTTCCAGCTGCTCCCGAGCTTCCCACACTCACACGGAGCAAGTCCCACGAGTCCAGCTGGGAA
 ACCGAATCGACGACGTCACCCCGATGAAGTTTGAACCTCCATGGATCCCACAGCTGGTACGAAGGGA
 TATCGGGCTCTCGGTGACGCACAGGTTCTCCACAAAGTCATGGTTGTACAGGTGTGCAACGTGTGCCAG
 AAGAGCATGATTTTTGGCGTGAAGTGCAAACACTGCAGGTTAAATGCCATAACAAGTGCACAAAGGAAG
 TCCCCGCTGCAGGATCACCTTCTCCACTGGCCAGGTTTCGGAGGACAGAGTGTCCCGTCAGATGAT
 CAACAACCCAGTGACAGAGCAGCAGAGCCCATTTTGGAAACCTTCCCAAGGCCCTGACAAAGAAGGAG
 CACCCTCCAGCCATGAACCTGGACTCCAGCAGCAACCCATCCTCCACCAGTCTCCACACCCTCATCGC
 CGGCACCTTCTGACCTCATCTAATCCCTCCAGTGCCACCACGCCTCCCAACCCGTACCTGGCCAGCG
 GGACAGCAGGTTGAGTTCAGCTTCCAGACATTTAGCCTGTTCTCAGGCAGCCCGCTGTCCAGCACAGCCGAC
 AGTACACGGCTCGACGACCAGCCAAAACAGATGTGCTAGGTGTTACGAAGCAGAGGCTGAGGAGCCTG
 AGGCTGGCAAGTCAGAGGACAGGATGACGAGGAGGATGAGGTGGACGACCTCCCAGCTCCCGCCGGCC
 CTGGAGGGGCCCATCTCTGAAAGGCCAGCCAGACCAGGTTTACCTGCAAGAGTGGGACATCCCCTTT
 GAACAGGTGGAAGTGGGCGAGCCATTGGACAGGTCGCTGGGGCCGGTGCACCAGGCCGTTGGCATG
 GCGAGGTGGCCATTCGGCTGCTGGAGATGGACGGCCACAATCAGGACCACCTGAAGCTGTTCAAGAAAGA
 GGTGATGAACTACCGGCAGACGGCGCATGAGAAGTGGTGTCTTTCATGGGGCCTGCATGAACCCACCT
 CACCTGGCCATTATCACCAGCTTCTGCAAGGGCGGACATTGCATTATTCGTGAGGGACCCCAAGACGT
 CTCTGGACATCAATAAGACTAGGCAGATCGCCCAGGAGATCATCAAGGGCATGGGTTATCTTCATGCAAA
 AGGCATCGTGACAAGGACCTCAAGTCCAAGAATGTCTTCTATGACAACGGCAAAGTGGTCATCACAGAC
 TTCGGGCTGTTTGGGATCTCGGGTGTGGTCCGAGAGGAACGGCGCGAGAACCAACTGAAACTGTCACATG
 ACTGGCTGTGCTACCTGGCCCCGAGATCGTACGAGAAATGATCCCGGGCGGGACGAGGACCAGCTGCC
 CTTCTCCAAAGCAGCCGATGTCTATGCATTCCGGACTGTGTGATGAACTACAGGCAAGAGACTGGCCC
 TTTAAGCACACAGCTGCTGAGGCCTTGATCTGGCAGATTGGAAGTGGGGAAGGAGTACGGCGCTCCTGG
 CATCCGTGAGCCTGGGAAGGAAGTCCGGCAGATCCTGTCTGCCTGCTGGGCTTTCGATCTGCAGGAGAG
 ACCCAGCTTACGCTGCTGATGGACATGCTGGAGAGGCTGCCAAGCTGAACCGGCGGCTCTCCACCCT
 GGGCACTTTTGAAGTCCGGCTGACATTAACAGCAGCAAAGTCATGCCCGCTTTGAAAGTTTGGCTGG
 GGACCCTGGAGTCCGGTAATCCAAGATG

ACGGTACGCGGCCGCTCGAGCAGAACTCATCTCAGAAGAGGATCTGGCAGCAATGATATCTGGATT
 ACAAGGATGACGACGATAAGGTTTAA

Protein Sequence: >MR217768 representing NM_013571
 Red=Cloning site Green=Tags(s)

MDRAALRAAMGEKKEGGGGAAADGGAGAAVSRALQCCGQLQKLIIDISIGSLRGLRTKCSVSNLDTQQE
 IRTLEAKLVKYICKQQSKLSVTPSDRTAELNSYPRFSDWLYIFNVRPEVVQEI PQELTLDALLEMDEAK
 AKEMLRWGWASTEEC SRLQAL TCLRKVTGLGGEHKMDSGWSSTDARDSSLGPPMDMLSSLGRAGASTQG
 PRSISVSALPASDSPV PGLSEGLSDSCIPLHTSGRLTPRALHSF ITPPTTPQLRRHAKLKPRTPPPPSR
 KVFQLLPSFP TLRKSHESQLGNRIDDVTPMKFELPHGSPQLVRRDIGLSVTHRFSTKSWLSQVCNVCQ
 KSMIFGVKCKHCRLKCHNKCTKEAPACRITFLPLARLRRTESVPSDINNPDRAAEPHFGLTPKALTKKE
 HPPAMNLDSSSNPSSTTSSTPSSPAPFLTSSNPSSATTPNPSPGQRDSRFSFPDISACSQAAPLSSTAD
 STRLDDQPKTDVLGVHEAEAEPEAGKSEAEDDEEVEDDLSSRRPWRGPI SRKASQTSVYLQEWDI PF
 EQVELGEP IGGQGRWGRVHRGRWHGEVAIRLLEMDGHNQDHLKLFKKEVMNYRQTRHENNVLFMGACMNP
 HLAIIITFCCKGRTLHSFVRDPKTS LDINKTRQIAQEIIKGMGYLHAKGIVHKDLKSKNVFYDNGKVVITD
 FGLFGISGVVREERENQLKLSHDWLCYLAPEIVREMIPGRDEDQLPFSKAADVYAFGTVWYELQARDWP
 FKHQPAEALIWQIGSGEGVRRVLASVSLGKEVGEILSACWAFDLQERPSFLLMDMLERLPKLNRRLSHP
 GHFWKSADINSSKVMRFRERFGLGTLESGNPKM

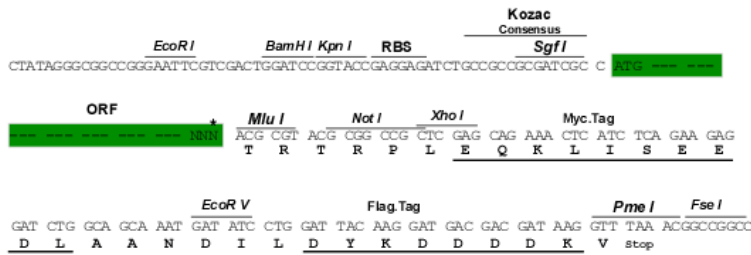
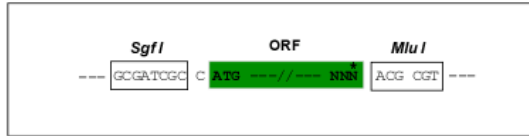
TRTRPLEQKLISEEDLAANDILDYKDDDDKV

Chromatograms: https://cdn.origene.com/chromatograms/mm9009_e06.zip

Restriction Sites: SgfI-MluI

Cloning Scheme:

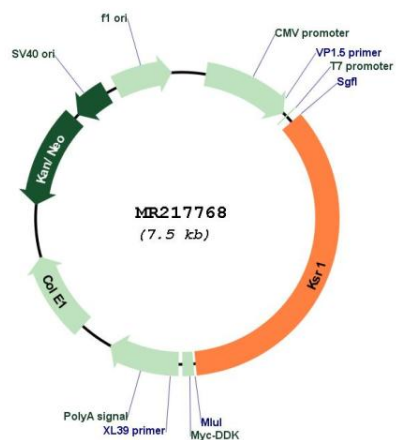
Cloning sites used for ORF Shuttling:



* The last codon before the Stop codon of the ORF

ACCN:	NM_013571
ORF Size:	2619 bp
OTI Disclaimer:	The molecular sequence of this clone aligns with the gene accession number as a point of reference only. However, individual transcript sequences of the same gene can differ through naturally occurring variations (e.g. polymorphisms), each with its own valid existence. This clone is substantially in agreement with the reference, but a complete review of all prevailing variants is recommended prior to use. More info
OTI Annotation:	This clone was engineered to express the complete ORF with an expression tag. Expression varies depending on the nature of the gene.
Components:	The ORF clone is ion-exchange column purified and shipped in a 2D barcoded Matrix tube containing 10ug of transfection-ready, dried plasmid DNA (reconstitute with 100 ul of water).
Reconstitution Method:	<ol style="list-style-type: none">1. Centrifuge at 5,000xg for 5min.2. Carefully open the tube and add 100ul of sterile water to dissolve the DNA.3. Close the tube and incubate for 10 minutes at room temperature.4. Briefly vortex the tube and then do a quick spin (less than 5000xg) to concentrate the liquid at the bottom.5. Store the suspended plasmid at -20°C. The DNA is stable for at least one year from date of shipping when stored at -20°C.
RefSeq:	NM_013571.3
RefSeq Size:	4087 bp
RefSeq ORF:	2622 bp
Locus ID:	16706
UniProt ID:	Q61097
Cytogenetics:	11 46.74 cM
MW:	97.2 kDa
Gene Summary:	Scaffolding protein that is part of a multiprotein signaling complex. Promotes phosphorylation of Raf family members and activation of downstream MAP kinases (PubMed:10409742, PubMed:12932319, PubMed:21102438). Promotes activation of MAPK1 and/or MAPK3, both in response to EGF and to cAMP (PubMed:21102438). Does not have kinase activity by itself (Probable).[UniProtKB/Swiss-Prot Function]

Product images:



Circular map for MR217768