

Product datasheet for MR217753

Ppm1k (NM_175523) Mouse Tagged ORF Clone

Product data:

Product Type:	Expression Plasmids
Product Name:	Ppm1k (NM_175523) Mouse Tagged ORF Clone
Tag:	Myc-DDK
Symbol:	Ppm1k
Synonyms:	2900063A19Rik; A930026L03Rik; PP2Cm
Mammalian Cell Selection:	Neomycin
Vector:	pCMV6-Entry (PS100001)
E. coli Selection:	Kanamycin (25 ug/mL)
ORF Nucleotide Sequence:	>MR217753 representing NM_175523 Red=Cloning site Blue=ORF Green=Tags(s)

TTTTGTAATACGACTCACTATAGGGCGCCGGGAATTCGTCGACTGGATCCGGTACCGAGGAGATCTGCC
GCC**CGATCGCC**

ATGTTATCAGCGGCCCTTCATTACTTTGTTGAGAAGTGGTGGGAATCAGGTGAAGAAGAGAGTGTGTTAA
GCTCCATCCTCTGCAGGACCACAGGCAGGCGACTCTGCCTGCTACTTCTCCACTTCAGAGGCCAGGTG
TTCTCGGTTTGATCCAGATGGAAGTGGGCAGCCAGCCACTTGGGACAATTTGGGATCTGGGATAACCGC
ATTGATGAGCCAATTCTGCTGCCACCTAGCATCAAGTACGGCAAACCAATCCCAAAATTAGCCTGGAGA
ACGTGGGCTGTGCCTCTCTCATTGGCAAACGAAAGAAAACGAAGATCGATTTGGGTTTGCACAGCTGAC
AGAAGAGGTGCTATACTTCGCAGTCTATGATGGACATGGGGGCCCTGCAGCCGCTGACTTCTGTCACACA
CACATGGAGAAATGTGTTATGGATTTGCTTCTCGGGAGAAAGACTTGGAAACTGTCCTGACCTTGGCCT
TTCTAGAAATAGATAAAGCCTTCGCGAGTTATGCCACCTGTCTGCAGATGCAAGCCTCCTGACCTCTGG
GACTACTGCAACAGTAGCCCTGTTGAGAGATGGTGTGAACTGGTGGTAGCCAGTGTGGAGACAGCCGG
GCTCTTTGTGTAGAAAAGGAAAACCATGAAGCTGACCACTGACCATACCCAGAAAAGAAAAGATGAGA
AAGAAAGGATCAAGAAATTCGGTGGGTTGTAGCTTGAATAGTTGGGACAGCCCCATGTAATGGCAG
ACTTGAATGACAAGGAGTATCGGAGATTTGGATCTTAAAGCCAGTGGGTAATTGCAGAACCTGAGACA
ACAAGGATTAAGCTCTACCATGCTGACGACAGTTTCTGGTCTTACCACAGATGGGATTAACCTCATGG
TGAATAGTCAAGAGATCTGCGACTTTGTCAACCAAGTCCACGATCCTAAAGAAGCAGCTCATTCCGGTGAC
TGAGCAGGCAATACAGTACGGTACCGAAGACAACAGCACTGCAGTGTGGTGCCTTTGGTCTTGGGGA
AAATACAAGAACTCTGAAATTACCTTCTCATTACGAGAAAGCTTTGCCTCCAGTGGGAGATGGGCC

ACGCGTACGCGGCCGCTCGAGCAGAAACTCATCTCAGAAGAGGATCTGGCAGCAATGATATCCTGGATT
ACAAGGATGACGACGATAAGGTTTAA



[View online »](#)

Protein Sequence: >MR217753 representing NM_175523
Red=Cloning site Green=Tags(s)

MLSAAFITLLRSGGNQVKRVLSSILLQDHRQATPACYFSTSEARCSRFDPDGSQPATWDFNGIWDNR
 IDEPILLPPSIKYGKPIPKISLENVGCASLIGKRKENERDFGFAQLTEEVLYFAVYDGHGGPAAADFCHT
 HMEKCVMDLLPREKDLETVLTLAFLAFLAFLAFLAFLAFLAFLAFLAFLAFLAFLAFLAFLAFLAFLAFLA
 ALLCRKGGKPMKLTDDHTPERKDEKERIKKFGGFVAWNSLGQPHVNGRLAMTRSIGDLDLKASGVIAEPET
 TRIKLYHADDNFLVLTDDGINFMVNSQEICDFVNQCHDPKEAAHSVTEQAIQYGTEDNSTAVVVPFGAWG
 KYKNSEITFSRSRFASSGRWA

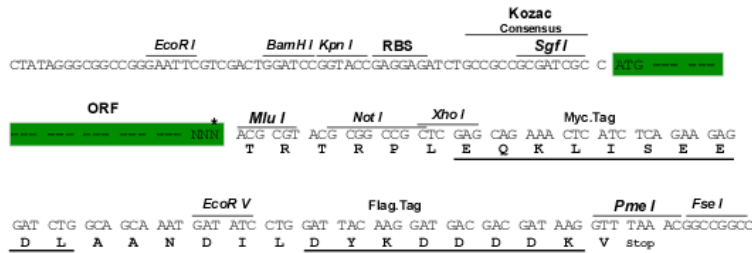
TRTRPLEQKLISEEDLAANDILDYKDDDDKV

Chromatograms: https://cdn.origene.com/chromatograms/mm9065_e02.zip

Restriction Sites: SgfI-MluI

Cloning Scheme:

Cloning sites used for ORF Shuttling:



* The last codon before the Stop codon of the ORF

ACCN: NM_175523

ORF Size: 1116 bp

OTI Disclaimer: The molecular sequence of this clone aligns with the gene accession number as a point of reference only. However, individual transcript sequences of the same gene can differ through naturally occurring variations (e.g. polymorphisms), each with its own valid existence. This clone is substantially in agreement with the reference, but a complete review of all prevailing variants is recommended prior to use. [More info](#)

OTI Annotation: This clone was engineered to express the complete ORF with an expression tag. Expression varies depending on the nature of the gene.

Components: The ORF clone is ion-exchange column purified and shipped in a 2D barcoded Matrix tube containing 10ug of transfection-ready, dried plasmid DNA (reconstitute with 100 ul of water).

Reconstitution Method:

1. Centrifuge at 5,000xg for 5min.
2. Carefully open the tube and add 100ul of sterile water to dissolve the DNA.
3. Close the tube and incubate for 10 minutes at room temperature.
4. Briefly vortex the tube and then do a quick spin (less than 5000xg) to concentrate the liquid at the bottom.
5. Store the suspended plasmid at -20°C. The DNA is stable for at least one year from date of shipping when stored at -20°C.

RefSeq: [NM_175523.5](#)

RefSeq Size: 5560 bp

RefSeq ORF: 1119 bp

Locus ID: 243382

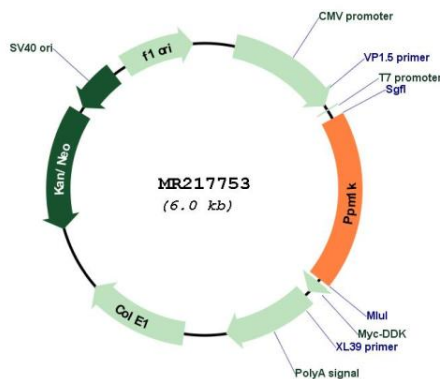
UniProt ID: [Q8BXN7](#)

Cytogenetics: 6 B3

MW: 40.9 kDa

Gene Summary: Regulates the mitochondrial permeability transition pore and is essential for cellular survival and development.[UniProtKB/Swiss-Prot Function]

Product images:



Circular map for MR217753