

## Product datasheet for MR217715

### Sgce (NM\_001130191) Mouse Tagged ORF Clone

#### Product data:

Product Type:	Expression Plasmids
Product Name:	Sgce (NM_001130191) Mouse Tagged ORF Clone
Tag:	Myc-DDK
Symbol:	Sgce
Synonyms:	e-SG
Vector:	pCMV6-Entry (PS100001)
E. coli Selection:	Kanamycin (25 ug/mL)
Cell Selection:	Neomycin
ORF Nucleotide Sequence:	>MR217715 representing NM_001130191 Red=Cloning site Blue=ORF Green=Tags(s)

TTTTGTAATACGACTCACTATAGGGCGCCGGAATTCGTCGACTGGATCCGGTACCGAGGAGATCTGCC  
GCC**CGGATCGCC**

ATGCTATTATTCTGGTGGTGGGAGCTGGGAGACCCTTGCTTGGACGGGAAAGGGTCGGGGGACACTCA  
AGATGAGCCCCGCGACCACTGGCACATTCTACTGACAGTGTACACTCTTTCTCCAAGGTGCACCTGA  
CCGGAACGTGTACCCATCTGCAGGTGTCCTCTTTGTTTCATGTGTTGGAGAGAGAGATTTAAAGGGTGAA  
TTTCCACCTTATCCAAAGCCTGGGGAGGTTAGTAATGATCCATAACATTTAACACAAATTAATGGGCT  
ACCCAGATAGACCTGGATGGCTTCGATATATCCAAAGGACCCCGTACAGTGTGGAGTCCCTGTATGGGTC  
TCCAACAGCTGAAAATGTGGGAAACCAACTATTATTGAGATAACTGCCTACAATAGACGTACCTTTGAG  
ACTGCAAGGCATAACTTGATAATTAATAATGTCAGCAGAAGAATCCCGTTGCCATATCAAGCAGAAT  
TCTTCATCAAAAATATGAATGTGGAAGAAATGTTGCCAGCGAGGTTCTTGGAGACTTTCTCGGGGCTGT  
AAAAATGTGTGGCAGCCAGAGCGCCTCAACGCCATAACATCACGTACGCCCTGGATAGGGGTGGCAGA  
GTGCCGCTTCTTATTAATGACATGAAGGAGGGTGTATGTCATGGTTGGTGCCGATGTTGCATTTTCTT  
CTTGTTTACGAGAAGTTGAAAATCCACAGAATCAGTTAAGATGCAGTCAAGAAATGGAGCCTGTGATAAC  
ATGCGACAAAAAGTTCCGAACACTTTTCATATCGACTGGTGCAAGATTTCACTGGTTGACAAAAACAAAG  
CAAGTGTCCACCTATCAGGAAGTAGTTCGTGGCGAGGGCATTTCGCCGACGCGGGGAGTACAAGCCCC  
CTTCGGATTCTTTGAAAAGCCGAGACTATTACACGGATTTCCTCGTTACCCTGGCTGTGCCCTCGCGGT  
AGCACTGGTGCTTTTCTAATACTCGCTTATATCATGTGCTGCCGACGGGAAGGAGTTATCCAGCTTGTC  
CATCACAGCTCGATTAGAAATCTACCAAGGAGCTTCGAGACATGTCCAAAAACAGAGAGATTGCATGGC  
CCCTGTCTACCCTGCCGTTCCACCCTGTAAGTGGAGAGGTTATACCTCCCACGCACACAGACAATA  
CGACAGCACCAACATGCCGTTGATGCAGGCACAGCAGAATTTGCCACACCAGACTCAGATCCCTCAACCG  
CAGACTACAGAGTTATCTCTTATTACTGCTCTCGGGAATT

**ACGCGT**ACGCGGCCGCTCGAGCAGAAACTCATCTCAGAAGAGGATCTGGCAGCAAATGATATCCTGGATT  
ACAAGGATGACGACGATAAGGTTTAA



[View online »](#)

Protein Sequence: >MR217715 representing NM\_001130191  
 Red=Cloning site Green=Tags(s)

MLLFWWWELGDPICAWTGKGRGTLKMPATTGTFLLTVYTLFSKVHSDRNVYPSAGVLFVHVLEREYFKGE  
 FPPYKPGEVSNDFITFNTLMGYDPRPGWLRYSIQRTPYSDGVL YGSPTAENVGKPTIIIEITAYNRRTFE  
 TARHNLIIINIMSAEEFPLPYQAEFFIKNMNVEMLASEVLGDFLGAVKNVWQPERLNAINITSALDRGGR  
 VPLPINDMKEGVYVMVGADVAFFSSCLREVENPQNQLRCSQEMEPVITCDKKFRTHFHIDWCKISLVKTK  
 QVSTYQEVVRGEGILPDGGEYKPPSDSLKSRDYDTDFLVTLAVPSAVALVFLILAYIMCCRREGVIQLV  
 HHSSIQKSTKELRDMSKNREIAWPLSTLPVFHPVTGEVIPPHTDNYDSTNMPLMQAQQNLPHTQIPQP  
 QTTELSPLLLLSGI

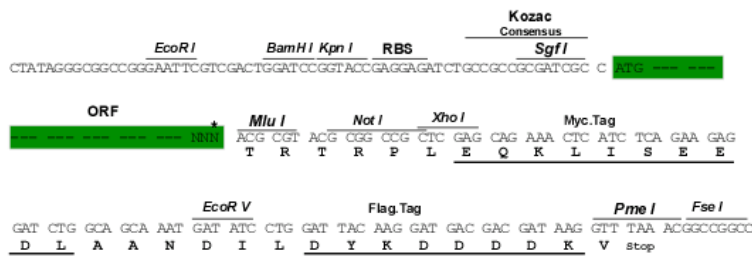
TRTRPLEQKLISEEDLAANDILDYKDDDDKV

Restriction Sites:

SgfI-MluI

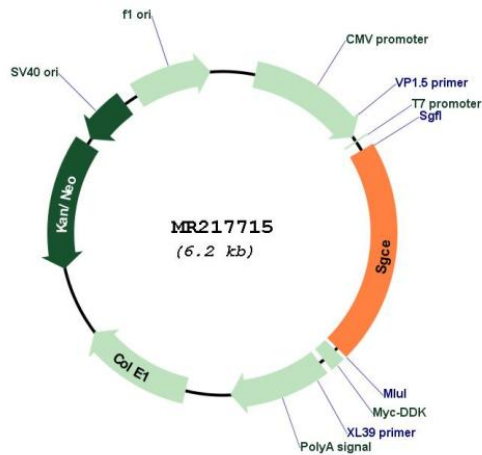
Cloning Scheme:

Cloning sites used for ORF Shuttling:



\* The last codon before the Stop codon of the ORF

Plasmid Map:



ACCN:

NM\_001130191

<b>ORF Size:</b>	1302 bp
<b>OTI Disclaimer:</b>	The molecular sequence of this clone aligns with the gene accession number as a point of reference only. However, individual transcript sequences of the same gene can differ through naturally occurring variations (e.g. polymorphisms), each with its own valid existence. This clone is substantially in agreement with the reference, but a complete review of all prevailing variants is recommended prior to use. <a href="#">More info</a>
<b>OTI Annotation:</b>	This clone was engineered to express the complete ORF with an expression tag. Expression varies depending on the nature of the gene.
<b>Components:</b>	The ORF clone is ion-exchange column purified and shipped in a 2D barcoded Matrix tube containing 10ug of transfection-ready, dried plasmid DNA (reconstitute with 100 ul of water).
<b>Reconstitution Method:</b>	<ol style="list-style-type: none"><li>1. Centrifuge at 5,000xg for 5min.</li><li>2. Carefully open the tube and add 100ul of sterile water to dissolve the DNA.</li><li>3. Close the tube and incubate for 10 minutes at room temperature.</li><li>4. Briefly vortex the tube and then do a quick spin (less than 5000xg) to concentrate the liquid at the bottom.</li><li>5. Store the suspended plasmid at -20°C. The DNA is stable for at least one year from date of shipping when stored at -20°C.</li></ol>
<b>RefSeq:</b>	<a href="#">NM_001130191.1</a> , <a href="#">NP_001123663.1</a>
<b>RefSeq Size:</b>	1755 bp
<b>RefSeq ORF:</b>	1305 bp
<b>Locus ID:</b>	20392
<b>Cytogenetics:</b>	6 1.81 cM
<b>MW:</b>	49.6 kDa
<b>Gene Summary:</b>	Component of the sarcoglycan complex, a subcomplex of the dystrophin-glycoprotein complex which forms a link between the F-actin cytoskeleton and the extracellular matrix. [UniProtKB/Swiss-Prot Function]