

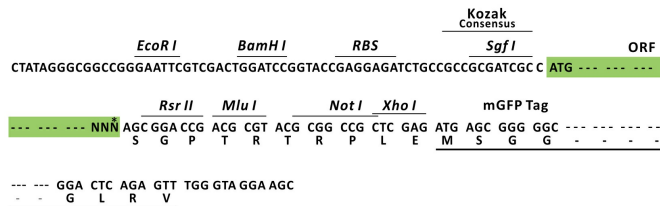
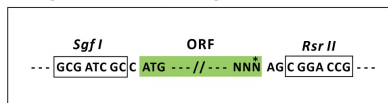
## Product datasheet for MR217700L4

### Sestd1 (NM\_175465) Mouse Tagged Lenti ORF Clone

#### Product data:

Product Type:	Expression Plasmids
Product Name:	Sestd1 (NM_175465) Mouse Tagged Lenti ORF Clone
Tag:	mGFP
Symbol:	Sestd1
Synonyms:	1500031J16Rik; A930010O20; Solo/Trio8
Mammalian Cell Selection:	Puromycin
Vector:	pLenti-C-mGFP-P2A-Puro (PS100093)
E. coli Selection:	Chloramphenicol (34 ug/mL)
ORF Nucleotide Sequence:	The ORF insert of this clone is exactly the same as(MR217700).
Restriction Sites:	SgfI-RsrII
Cloning Scheme:	

Cloning sites used for ORF Shuttling:



\* The last codon before the Stop codon of the ORF.

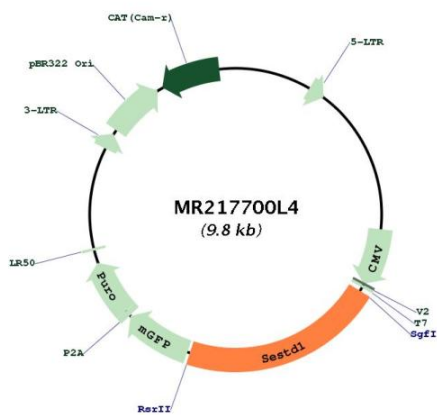
ACCN:	NM_175465
ORF Size:	2088 bp



[View online »](#)

<b>OTI Disclaimer:</b>	The molecular sequence of this clone aligns with the gene accession number as a point of reference only. However, individual transcript sequences of the same gene can differ through naturally occurring variations (e.g. polymorphisms), each with its own valid existence. This clone is substantially in agreement with the reference, but a complete review of all prevailing variants is recommended prior to use. <a href="#">More info</a>
<b>OTI Annotation:</b>	This clone was engineered to express the complete ORF with an expression tag. Expression varies depending on the nature of the gene.
<b>Components:</b>	The ORF clone is ion-exchange column purified and shipped in a 2D barcoded Matrix tube containing 10ug of transfection-ready, dried plasmid DNA (reconstitute with 100 ul of water).
<b>Reconstitution Method:</b>	<ol style="list-style-type: none"><li>1. Centrifuge at 5,000xg for 5min.</li><li>2. Carefully open the tube and add 100ul of sterile water to dissolve the DNA.</li><li>3. Close the tube and incubate for 10 minutes at room temperature.</li><li>4. Briefly vortex the tube and then do a quick spin (less than 5000xg) to concentrate the liquid at the bottom.</li><li>5. Store the suspended plasmid at -20°C. The DNA is stable for at least one year from date of shipping when stored at -20°C.</li></ol>
<b>RefSeq:</b>	<a href="#">NM_175465.6</a> , <a href="#">NP_780674.1</a>
<b>RefSeq Size:</b>	8951 bp
<b>RefSeq ORF:</b>	2091 bp
<b>Locus ID:</b>	228071
<b>UniProt ID:</b>	<a href="#">Q80UK0</a>
<b>Cytogenetics:</b>	2 C3
<b>Gene Summary:</b>	May act as the primary docking protein directing membrane turnover and assembly of the transient receptor potential channels TRPC4 and TRPC5. Binds phospholipids such as phosphatidylinositol monophosphates, phosphatidylinositol diphosphates (PIP2s) and phosphatidic acid, but not less polar lipids including phosphatidylcholine, phosphatidylserine, and phosphatidylinositol. The binding to PIP2s is calcium dependent. Might be involved in the plasma membrane localization of CTNNB1 (By similarity).[UniProtKB/Swiss-Prot Function]

Product images:



Circular map for MR217700L4