

Product datasheet for MR217670

Fyco1 (NM_001110253) Mouse Tagged ORF Clone

Product data:

Product Type:	Expression Plasmids
Product Name:	Fyco1 (NM_001110253) Mouse Tagged ORF Clone
Tag:	Myc-DDK
Symbol:	Fyco1
Synonyms:	2810409M01Rik; Mem2; RUFY3; ZFYVE7
Vector:	pCMV6-Entry (PS100001)
E. coli Selection:	Kanamycin (25 ug/mL)
Cell Selection:	Neomycin
ORF Nucleotide Sequence:	>MR217670 representing NM_001110253 Red=Cloning site Blue=ORF Green=Tags(s)

TTTTGTAATACGACTCACTATAGGGCGCCGGGAATTCGTCGACTGGATCCGGTACCGAGGAGATCTGCC
GCC**CGATCGCC**

ATGGCTTCTAGCAGCACTGAGACTCAGCTCCAGAGGATCATCCGTGATCTACAAGATGCAGCGACAGAAC
TAAGCCATGAATTAAGGAAGGCGGAGAGCCAATCACAGATGACAGCACCAGTTTGCACAAGTTTCTTA
CAAACCTTGAGTATCTTCTGCAATTTGATCAGAAGGAGAAGGCGAGCCTCCTGGGAAGCAAGAAAGACTAC
TGGGATTACTTTGTGCGTGCCTAGCCAAGGTGAAAGGAGCAAATGATGGCATTGATTTGTCAGGTCCA
TCTCTGAGCTCCGAACATCTCTGGGAAAAGGGAGAGCCTTCATTTCGCTACTCTTTGGTGCACCAGAGGCT
GGCAGACACCTTGCAGCAGTGTTCATGAACACTAAAAGTGACCAGTGACTGGTATTATGCAAGAAGCCCC
TTTCTGAAGCCAAAGCTGAGCTCTGACATTGTGGGTCAACTGTATGAGCTGACTGAGGTTTCAGTTTGATC
TAGCACCAGAGGCTATGACTTGGATGCCGCTGGCCAACATTTGCCAGGAGGACGCTAGCCACCAGCAC
GTCTGCTTACATGTGAAACCCCCAGCCGAAGCTCCAGCATGAGTAGTTTAGTGAGCAACTACTTGCAG
ACTCAGGAGATGGCCTCCAGTCTTGACCTGAATTGTTCTCTAAACAATGAAGCACTAGAAAGCTTCGACG
AGATGCGGCTGGAGCTGGACCAGTTGGAGTTTCGGGAGAAACAGCTACAAGAAGTGTACAGCAGCTAGA
CAGGGAGAACCAAGCACTGCGAATGTTGGTCAGCAGACAAGGGGGCAGCTTCAGGTAGAGAAGGAGATG
GGGTACCTTGCAGTCGAGGACAGCATTGGCCTTGTGAGCCTGGTAGCAGAACTCCAGAAGCAGGGGACG
TCAGCCAGGCCACAGTGAAGAAGCTACAGTCATGTCTGCAGGCCCTGGAGCTAAATGTAGACAAGAAAGA
GTACAGTCCCTCAGCCTTGCAGCTTGAACATGGCGAAGGAGCTTGCAGCTGTGAGAGGCTCCTTGGGT
AGGGAGAACCAGCTCCTGGCCAGCCTTTCAGAGCGCCTTGTAGGGCAGAGAAAGGGGAAAAGACACCTC
CAGACACAGAGCTTCATCAGGAGCCAGTTCTGCGGATCTGGTGTCAAGTTCCAGGAGCTGAAGGGAAA
ACTTCAAGCCCTAGAAGGAGAGAACACCGAGGCCAGGAGCTCAACAGGCAGCAGAGTATCAAGCTAGAG
CAACTGGCCAAGGAACTACAGCTGAAGGAGGAGGCCCGGGCTAGCCTAGCACACTTGTGAAAGGATGTGG
TCCCACTTCAGGAAGAGCTGTCTGGAAAGAAGCAAGAGTCAAGCTCAGCTCAGCTCCGACGACAGCTTCAGGAATC
CCTGGCCCACTTGCAGCTCTGTGGAGGAGGAGCTGGCTGAAGCCAGGCAGCAGGAAAAGCAGCATCGAGAA
GAAAAGCAGCTACTGGAGCAGGAAGCCAGTCTCTTACATGGCAGCTGCAGCTCCTAGAGACCCAGCTAG



GACAGGTGAGTCAGCTTGTAAAGTGACCTGGAGGAGCAGAAGAAGCAACTCATGCAGGAGAGACCATCT
CAGCCAGAGAGTGGGCACACTGGAGCAGCTAGCCGAGGTGCATGGCCCGCCACAGTCTGCGGAGATGCCG
GAAAAGAGGCAGCAGTGCCTCCGGGAAGAACAGGTAACAATAGCACAGTGTGAGGAGCAGAGCAGGAGG
AGTTGCAGAAGGAGCTGCAGAACATGGTTGACCGCAACCAGCTCCTCGAAGGCAAACGCAGGCCTTGCA
AACTGACTATAAGGCACTGCAGCAGCGAGAGGCAGCAATCCAGGGCTCTTTAGCCTCCCTGGAAGCTGAA
CAGGCTAGCATCCGGCACCTGGGAAACCAGATGGAAGCAAGCCTCCTGGCTGTGAAGAAAGCCAAAGAGA
CTATGAAAAGCCAGGTGGCAGAGAAAGGAGGCTGCCCTGCAGAGTAAAGGAGAGTGAAGGAGGCTGCA
GGAAGAGGCAGATCAGTGCCGGCTTCAGGCAGAGGCCAGGCCAGGAGCTCAGAGCTCTTGAGAACCAG
TGCCAGCAGCAGATTAGCTGATTGAGGTCTCTGCAGAGAAAAGGCCAACAGGGACTCAGCCTGCCCC
AAGTCAACACAGACCAACTGGCCCTGTCTCAAGCACAGCTGGAATCCACCAGGGGGAAGCCAGCGGTT
ACAGAATGAGGTGGTGGACCTCCAGGCCAAGCTCCAGGTGGCCCTAGGTGATCGAGACAAGTTACAGAGC
CAGCTGGTGTGGCTGAGACAGTTCTAAGGGAGCACAAGACCCTGGTGAACAACGTAAAGAGCAGAATG
AAGCCCTCAACAGGGCCATGTTCAAGGAGCTGCTTCAAGTCTCAGAGAGAGAGGGGATACTACAGGAGGA
GAGCATCTACAAGGCCAGAACAGCAAGAGCTACGAGCCCTGCAGGCAGAGCTGTCACAGGTGAGG
TGCAGCTCTGAGGAGGCCACCTGGAACATGCAGAGCTGCAAGACCAGCTGCACCAGCCAAACACAGACA
CAGCTGAGCTTGGTATACAGGTCTGTGCACTGACAGCTGAGAAGGATCGAATGGAGGAGGCCCTGGCCAG
CCTAGCCAGGAGCTCCAGGACTCCAAAGAGGCAGCACTACAGGAACGAAAGGGCTTGAGCTCCAAGTG
ATGCAACTTCAGCAAGAGAAGGAGAAGTTGAGGAAAAGGTGAAGGCAGCTGAGGAGGCAGCCAGTTCAT
TCTCTGGTCTGCAGGCACAGCTGGCCAGGCTGAGCAGCTAGCCAGAGCCTCCAAGAGACTGCACACCA
GGAACAAGATGCCCTCAAGTTCCAACCTAAGTGTGAGATTATGGACCACCAGAACCGATTAAAGACAGCC
AATGAAGAGTGTGGGCACCTCAGGGCCAGCTAGAAGAACAAGGCCAGCAGCTGCAATGACTAAGGAGG
CTGTGCAGGAAGTGGAGATCACCAAGGCGGCCATGGAGGAGAAGTGAATTGCACCAGTAGCCACCTTGC
AGAGTCCAGGCCACTTTACTGCGCAAAGATGAAGAAAGCACTATGCTTCAAACCACTAGAAAAGACA
CAGAAGGAACCTGAAAAGGCTACATCAAAAATCAAGAATATTACAACAACCTTGCCAAGAGGTGACAA
ACAGGGAAGGAATGACCAGAAGATGCTTGCAGACCTCGATGACCTGAACAGAACCAAGAAATACCTTGA
GGAGCGGTGATAGAGCTGCTCAGGACAAAGATGCTCTCTGGCAAAAATCCGATGCACTGGAAGAATTC
CAGCAGAAGCTCAGTGTGAAGAGAAATGTCTTGGGGACATGGAAGTCAACCACTGCCATGACTGCAAGC
GGGAGTTCAGCTGGATAGTGCAGCGCACCACTGCAGGATATGTGGCCGTATCTTCTGTTACTACTGCTG
TAATAACTATGTTGTGACTAAGCCAGTGGCAAGAAGGAACGCTGCTGCCGAGCCTGCTCCAGAAGTTC
GGCGAAGGCTCTGGATCCAATGATAGCAGTGGTTCAGGCACTAGCCAGGGAGAGCCAGCCCATGGTGT
CACCAGCTGAAGCAAGTCCCAGTCCATAGGAAGCCAAGGATAAACTCAGTCTGCAGACCACCAGACGA
TGCTGTGTTGACATCATCACTGATGAAGAAGTGTGCCAGATCCAAGAATCTGGCTCCTCCTTGCCGTA
ACACCCACTGAAACTGATTCAATGGACCCGAATACGGCTGAACAGGACACCACATCAAACCTATTAAACC
CTGAAGACACTGAAGACGTGCCATGGGGCAAGATGCTGAAATCTGCTTGTGAGTCAAGGAGAGCTGAT
GATCAAATTACCCCTCACAGTAGAGGAGGTGCGCCAGCTTCGGGGAGGGCAGCAGGGAGCTGTTTGTGAGG
TCCAGTACCTACAGCCTGATCACCATCACCGTGGCTGAGCCTGGCCTCACCATCAGCTGGGTCTTCTCTT
CTGATCCCAAGAGCATCTCCTTCAAGTGTGGTCTTCCAAGAGACAGAAGACACGCCGCTCGACCAGTGCA
GGTCTCATTCCCACCACCCGATGCAATTCCCACAAGGAGAACATCCGGGGCCAGCTGAAGTCCGAATC
CCTGGCATCTACTTGTCTCATCTTTGACAACACCTTTTCAAGATTTATCTCAAAAAAGTCTTTACCACC
TGACTGTTGACCGCCTGTGATCTACGATGGAAGCGATTTCCA

ACGCGTACGCGGCCGCTCGAGCAGAACTCATCTCAGAAGAGGATCTGGCAGCAATGATATCCTGGATT
ACAAGGATGACGACGATAAGGTTTAA

Protein Sequence: >MR217670 representing NM_001110253
 Red=Cloning site Green=Tags(s)

MASSTETQLQRIIRDLQDAATELSHEFKEGGEPITDDSTSLHKFSYKLEYLLQFDQKEKASLLGSKKDY
 WDYFCACLAKVKGANDGIRFVRSISELRTSLGKGRAFIYSLVHQRLADTLQCCFMNTKVTSDWYYARSP
 FLKPKLSSDIVGQLYELTEVQFDLAPRGYDLDAAWPTFARRTLATSTSAYMWKPPSRSSSMSSLVSNYLQ
 TQEMASSLDLNCSLNNEALESFDEMRELELDQLEVRKQLQERVQQLDRENQALRMLVSRQGGQLQVEKEM
 GYLAVEDSIGLVSLVAELQKQGDVVSQATVKKLQSQCLQALELNVDDKEYSPSALQLENMAKELDTVRGSLG
 RENQLLASLSERLARAEEKGKTPPDTELHQEPVPADLVLFKQELKGLQALEGENTEAEQELNRQQSIKLE
 QLAKELQKKEARASLAHLVKDVVPLQEELSGKKQESAQLRRQLQESLAHLSSVEEELAEARQQEKQHRE
 EKQLLEQEATSLTWQLLLETQLGQVSQLVSDLEEKKQLMQRDHLQSRVGTLEQLAEVHGPPQSAEMP
 EKRRQCLREEQVNNSTVSEAEQEELQKELQNMVDRNQLLEGKLQALQTDYKALQQREAAIQGSLASLEAE
 QASIRHLGNQMEASLLAVKKAKETMKAQVAEKEAALQSKESECQRLQEEADQCRLQAEAQAQELRALENQ
 CQQQIQLEIVLSAEKGGQGLSLPQVNTDQLALSQAQLEIHQGEAQRQLQNEVVDLQAKLQVALGDRDKLQS
 QLGVAETVLRHKTLLVQQLKEQNEALNRAHVQELLQCSEREGILQEEIYKAQKQEQELRALQAEQELQV
 CSSEGAHLEHAELQDQLHRANTDTAELGIQVCALTAEKDRMEEALASLAQELQDSKEAALQERKGLELQV
 MQLQQEKEKLEKVKAAEEAASSFSGLQAQLAQAEQLAQSLQETAHQEQDALKFQLSAEIMDHQNRKTA
 NEECGHLRAQLLEEQQQLQMTKEAVQLEITKAAMEEKLNCTSSHLAECQATLLRDKDEESTMLQTSLERT
 QKELEKATSKIQEYNNKLCQEVNRENRNDQKMLADLDDLNRKTKYLEERLIELLRDKDALWQKSDALEEF
 QQKLSAEKCLGDMEVNHCHDCKREFSWIVRRHHCRCGRIFCYCCNNYVVTKPSGKKERCACRFQKF
 GEGSGSNDSSGSGTSQGEPSMPVSPAESPQSIGSQGINSVCRPPDDAVFDIITDEELCQIQESGSSLPE
 TPTETDSDMPNTAEQDTTNSLTPEDTEDVPMGQDAEICLLKSGELMIKPLTVEEVASFGEGRSRELFVR
 SSTYSLITITVAEPGLTISWVFSDDPKSISFSVVFQETEDTPLDQCKVLIPTRCNHSHKENIRGQLKVRI
 PGIYLLIFDNTFSRFISKVLYLHLLTVDRPVIYDGSDFP

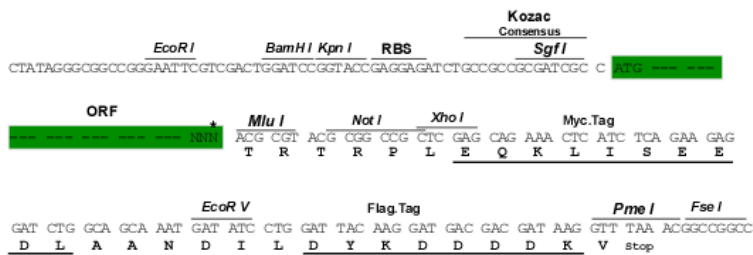
TRTRPLEQKLISEEDLAANDILDYKDDDDKV

Restriction Sites:

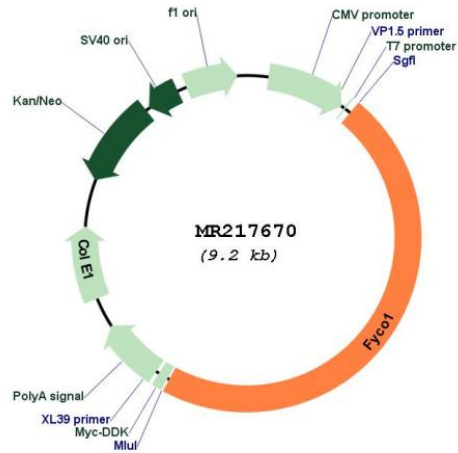
SgfI-MluI

Cloning Scheme:

Cloning sites used for ORF Shuttling:



* The last codon before the Stop codon of the ORF

Plasmid Map:


ACCN: NM_001110253

ORF Size: 4314 bp

OTI Disclaimer: The molecular sequence of this clone aligns with the gene accession number as a point of reference only. However, individual transcript sequences of the same gene can differ through naturally occurring variations (e.g. polymorphisms), each with its own valid existence. This clone is substantially in agreement with the reference, but a complete review of all prevailing variants is recommended prior to use. [More info](#)

OTI Annotation: This clone was engineered to express the complete ORF with an expression tag. Expression varies depending on the nature of the gene.

Components: The ORF clone is ion-exchange column purified and shipped in a 2D barcoded Matrix tube containing 10ug of transfection-ready, dried plasmid DNA (reconstitute with 100 ul of water).

Reconstitution Method:

1. Centrifuge at 5,000xg for 5min.
2. Carefully open the tube and add 100ul of sterile water to dissolve the DNA.
3. Close the tube and incubate for 10 minutes at room temperature.
4. Briefly vortex the tube and then do a quick spin (less than 5000xg) to concentrate the liquid at the bottom.
5. Store the suspended plasmid at -20°C. The DNA is stable for at least one year from date of shipping when stored at -20°C.

RefSeq: [NM_001110253.1](#), [NP_001103723.1](#)

RefSeq Size: 7695 bp

RefSeq ORF: 4314 bp

Locus ID: 17281

UniProt ID: [Q8VDC1](#)

Cytogenetics: 9 74.52 cM

MW: 162.8 kDa

Gene Summary: May mediate microtubule plus end-directed vesicle transport.[UniProtKB/Swiss-Prot Function]