

Product datasheet for MR217638

Ptpn21 (NM_011877) Mouse Tagged ORF Clone

Product data:

Product Type:	Expression Plasmids
Product Name:	Ptpn21 (NM_011877) Mouse Tagged ORF Clone
Tag:	Myc-DDK
Symbol:	Ptpn21
Synonyms:	PTPD1; PTPRL10
Mammalian Cell Selection:	Neomycin
Vector:	pCMV6-Entry (PS100001)
E. coli Selection:	Kanamycin (25 ug/mL)
ORF Nucleotide Sequence:	>MR217638 ORF sequence Red=Cloning site Blue=ORF Green=Tags(s)

TTTTGTAATACGACTCACTATAGGGCGCCGGGAATTCGTCGACTGGATCCGGTACCGAGGAGATCTGCC
GCC**CGCATCGCC**

ATGCCACTGCCATTTGGATTGAAGTTGAAACGCACCCGACGCTACACTGTGTCCAGCAAGAGCTGCCTGG
TTGCCCGGATCCAGCTGCTCAATAATGAGTTTGTGGAGTTCACCTGTCTGTGGAGAGCACTGGCCAGGA
GAGCCTAGAAGCTGTGGCCAGCGCCTGGAGCTGAGAGAGGTCACCTACTTTAGCCTCTGGTACTACAAC
AAGCAGAATCAGCGCGCTGGGTGGATTTGGAGAAACCCCTGAAGAAGCAGCTGGACAAGCACGCACTGG
AGCCTACCGTCTACTTCGGCGTCTATTCTATGTGCCTTCTGTTTCCAGCTGCAGCAGGAGATTACCAG
GTATCAGTATTACCTGCAGCTGAAGAAAGATATTCTGGAAGGAAACCTTCCCTGTACATTAGAACACGCC
ATTCAGCTGGCCGGCTTAGCTGTTCAAGCTGATTTTGGTGACTTTGATCAGTATGAATCCCAAGATTTTC
TTCAGAAATTTGCCTTGCTCCCCGTGGCATGGCTACAGGATGAAAAAGTCTGGAAGAAGCAGCCAGAA
AGTGGCCTTACTGCACCAGAAATACAGAGGGCTCACAGCTCCTGAGGCCGAGCTGCTGTACATGCAGGAG
GTAGAGAGAATGGATGGCTACGGAGAGGAGAGCTACCTTGCCAAGGACAGCCAAGGAAGTGACATATCCA
TTGGTGCCTGTCTCGATGGCATCTTTGTGAAACACAAGAACCGAAGGCCCTCCTGTGGTGTTCAGGTGGCA
CGACATTGCTAACATGTCGCATAACAAGTCCTTTTTGCACTAGAGCTGGCAAATAAAGAGGAGACCATC
CAGTTTCAAACCTGAAGACATGGAGACAGCCAAGTACGTGTGGCGCTGTGTGGCACGGCACAAATTC
ACAGACTGAACCAGTGTAGCCTGCAAACGCAGGCCGCCAGCTGAACTCAGTCAGGAGGGGCTCATCCTC
CAGGATGTCTCTGCCTAAACCCAGCCCTATGCGATGCCTCCCCACCCAGCTGCATTATAATGGACAT
TATACAGAGCCATTTGCTTCTTCCCAAGACAACATCTTTGTGCCAACAGAATGGATTCTACTGCACT
CCCAGACAAGCCTGGATAGAACCAGATTGACCTCAGTGGTCGCATCCGCAACGGCAGCGTCTACAGTGC
ACACAGTACGAATTCCTTAAACACACTTCAGCCCTACCTGCAGCCCTCCCCATGCTCTCAACCCGAGT
ATCACTGGCAGTGATGTCATGAGACCCGACTACATCCCCTCCACCGGCACAGTGCCTCATTCCCCGT
CTTACCGCCGACCCCTGACTACGAGACCGTGATGAAGCAGCTCAACAGAGGCATGGTGCACGCAGACCG
GCACAGCCACTCGCTGAGGAACCTCAACATTGGCAGTTCCTATGCGTACAGCCGCGCCGACGCTTGGTC



[View online »](#)

TACAGCCAGCCCAGATTCTGGGAGCACCTCACCTCACCTCTCCCCAGTCAGCCCACTACCCCTTTAACCTGA
 TGAAGTACAGTTTCCACAGCCAGTCTCCGTATCCCTACCTGCCGAGAGGCGGCCAGTGGTGGGCGCCGT
 GAGTGTGCCTGAACTGACAAATGTGCAGCTGCAGGCTCAGGACTACCCAGCTCCAAACATTATGAGAACC
 CAGGTGTACCGCCACCCCGCCGTATCCTTACCAAGACCTGCCAACAGCACCCAGACCTGTCCCGCC
 ACCTCTACATCAGCAGCAGCAATCCGGATCTCATCACCAGGCGCGTCCATCACTCAGTGCAGACCTTCCA
 GGAGGACAGCTTGCCCGTGGCTCACTCTCTGCAGGAGGTCAGCGAGCCCTCACAGCAGCGGCCATGCC
 CACCTACAGAAGAGGAACAGTATTGAAATCGCAGGGCTCACACATGGATTTCGAAGGCCTGAGGCTCAAGG
 AGAGGACGGTGTAGCCTCAGCAGCAGACGTGGCGCCCGGACCTTCTCAGCAGGCTCCCAGTCCAGCGT
 CTTCTCTGACAAAATGAAGCAGGAGGGGACTGAAGAGCAGGAGGGTGGCAGATACAGCCATAAGAAGTCC
 CTTTCTGATGCCACCATGCTGATTCATAGCAGTGAAGGAGCAGGACTTGAAGAGGACAGCAGCAGAG
 AACAGGCCATCTCAGCTGTGTCTGAGCCCCGCTTACGGCCGCTTTCTCTCAGGAACTAACTACCCCTG
 TGCTTCAGCGACTCCGATCACTGGGCTCTGCATATTTTTGAGCCCAAGCCCATGTACAGAGCCTGAG
 AAGAGGGCAAAGGACATCAGCCCTGCCACCTGGTTGTGGAGACCCATCGGCCCGAAGAGATGGACTGC
 TGACCCCTCCATGTCCGAGTCAAGCTCACGACCTCAGGAGGTACCGAGCTAGGAGGGACTCTGTCAA
 GAAAAGGCCAGTGTAGACCTCCTCTCTGGGAAAAAAGCGCTGTGGAAGGACTTCCGCCACTAGGGGGG
 ATGAAAAAACTCGAGCAGATGCAAAAAAATGGTCCCCTCAAGCTGGCAGCCCTCAATGGGCTCTCC
 TGTCGCCGCTGCCCTGCCTGATGAAGGAAAAGAGTGTCCACCAGAGCGACAAATGACGAGAGGTGCAA
 GGTTCTGGAGCAGCGTTAGAGCAAGGCATGGTCTTACCGAATATGAGAGGATCCTTAAGAAGCGGCTG
 GTTGATGGTGAGTGTCTGACTGCCCGGCTCCCTGAAAAATGCAGAGAGAAATCGATTTCAAGATGTCTCC
 CCTACGATGATGCGAGAGTCAAGTGGTGCCAACCAAGGAGAAACAACACTGGCTACATCAACCGTCA
 CATTAAAGTCTCTGTAGCGGAATAGAATGGGATTATATTGCCACACAGGGACCATTAAAAATACCTGC
 CAGGACTTTTGGCAGATGGTGTGGGAACAGGGAGTCAATTATAGCAATGGTGACAGCAGAAGAGGAGG
 GAGGCCGGGAGAAGAGCTTTAGTACTGGCCACGGCTTGGTTCCAGGCACAACACTGTACCTATGGAAG
 GTTTAAGATCACAAACGCGCTTCCGCACGACTCGGGCTGCTATGCCACCACAGGTTTGAAGATGAAGCAC
 CTTCTCACAGGGCAGGAGAGAACCCTTTGGCATCTTCACTACACAGACTGGCCTGAACACGGCTGTCCCG
 AAGACCTCAAAGGATTTTATCCTACCTTGAAGAGATCCAGTCACTTCGACGTCATACAAACAGTACCAG
 TGAACCCAAAAGCCACAATCCCCGCTGCTGGTGCAGTGCAGTGTGGCGTGGGAAGAACTGGGGTCTG
 ATTCTGTGAGAGATCATGGTTGCTGTCTGGAACACAATGAGGTGCTGGACATCCCAGAGTGTGGACA
 TGCTGAGGCAGCAGAGGATGATGCTGGTGCAGACACTGGCCAGTACACCTTTGTGTACAGAGTGTCTCAT
 TCAGTTCTGAAAAGCTCCAGGCTCATT

AGCGGACCGACGCGTACGCGCCGCTCGAGCAGAACTCATCTCAGAAGAGGATCTGGCAGCAAATGATATCC
 TGGATTACAAGGATGACGACGATAAGGTTTAA

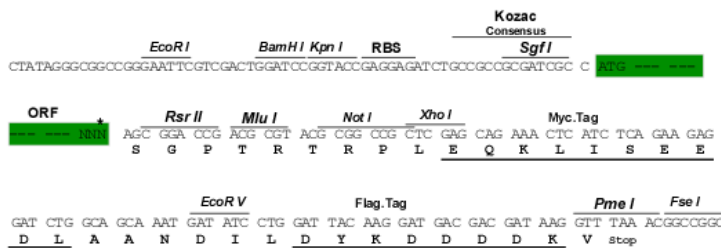
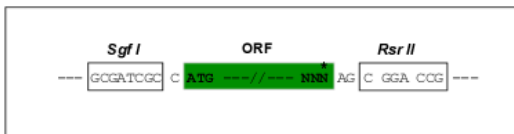
Protein Sequence: >MR217638 protein sequence
 Red=Cloning site Green=Tags(s)

MPLPFGLKLRTRRYTVSSKSLVARIQLLNNEFVEFTLSVESTGQESLEAVAQRLELREVTYFSLWYYN
 KQNQRWVDLEKPLKKQLDKHALEPTVYFVGLFVYPSVSQLQQEITRYQYYLQLKKDILEGNLPCTLEHA
 IQLAGLAVQADFGDFDQYESQDFLQKFALLPVAWLQDEKVL EEAQKVALLHQKYRGLTAPEAELLYMQE
 VERMDGYGEESYPAKDSQGSDISIGACLDGIFVKHKNGRPPVFRWHDIANMSHNKSFFALELANKEETI
 QFQTEDMETAKYVWRLCVARHKFYRLNQCQLTQAATLNSVRRGSSSRMSLPKQPYPAMPPPQLHYNGH
 YTEPFASSQDNIFVPNKNFYCHSQTSLDRTQIDL SGRIRNGSVYSAHSTNSLNTLQPYLQPSMSSNPS
 ITGSDVMRPDIIPSHRSALIPPSYRPTPDYETVMKQLNRGMVHADRHSHSLRNLNIGSSYAYSRPDALV
 YSQPEIREHPLTSPQSAHYPFNLNYSFHSQSPYPYPAERRPVVAVSPEL TNVQLQAQDYPAPNIMRT
 QVYRPPPPYPYRPNSTPDL SRHL YISSNPDLITRRVHHSVQTFQEDSLPVAHSLQEVSEPLTAARHA
 HLQKRNSIEIAGLTHGFGLRLKERTVSASAADVAPRTFSAGSQSSVFSKMKQEGTEEQGGRYSHKKS
 LSDATMLIHSSEDEDLEEDSSREQAISAVSEPRLTAAF SQELNYPCASATPITGPLHIFEPKPHVTEPE
 KRAKDISPAHLVVETHRPRRDGLLTPSMSESDLT TSGRYRARRDSVKKRPVSDLLSGKKSVEGLPPLGG
 MKKTRADAKKIGPLKLAALNGLSLRSLPLPDEGKEVSTRATNDERCKVLEQRLEQGMVFTEYERILKKRL
 VDGECSSTARLPENAERNRFQDVL PYDDARVELVPTKENNTGYINASHIKVSVSGIEWDYIATQGPLQNTC
 QDFWQMVWEQVAIIAMVTAEEEGGREKSFYWPRLGSRHNTVYGRFKITTRFRDTSQGYATTGLMKMH
 LLTGQERTVWHLQYTDWPEHGCPEDLKGF LSYLEEIQSVRRHTNSTSEPKSHNPPLL VHCSAGVGRGTGVV
 ILSEIMVACLEHNEVLDIRVLDMLRQQRMLVQTLGQYTFVYRVLIQFLKSSRLI

SGPTRRTRPLEQKLI SEEDLAANDILDYKDDDDKV

Restriction Sites: SgfI-RsrII
Cloning Scheme:

Cloning sites used for ORF Shuttling:

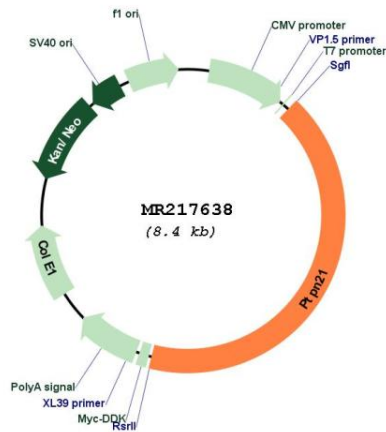


* The last codon before the Stop codon of the ORF

ACCN: NM_011877
ORF Size: 3531 bp

OTI Disclaimer:	The molecular sequence of this clone aligns with the gene accession number as a point of reference only. However, individual transcript sequences of the same gene can differ through naturally occurring variations (e.g. polymorphisms), each with its own valid existence. This clone is substantially in agreement with the reference, but a complete review of all prevailing variants is recommended prior to use. More info
OTI Annotation:	This clone was engineered to express the complete ORF with an expression tag. Expression varies depending on the nature of the gene.
Components:	The ORF clone is ion-exchange column purified and shipped in a 2D barcoded Matrix tube containing 10ug of transfection-ready, dried plasmid DNA (reconstitute with 100 ul of water).
Reconstitution Method:	<ol style="list-style-type: none"> 1. Centrifuge at 5,000xg for 5min. 2. Carefully open the tube and add 100ul of sterile water to dissolve the DNA. 3. Close the tube and incubate for 10 minutes at room temperature. 4. Briefly vortex the tube and then do a quick spin (less than 5000xg) to concentrate the liquid at the bottom. 5. Store the suspended plasmid at -20°C. The DNA is stable for at least one year from date of shipping when stored at -20°C.
RefSeq:	<u>NM_011877.2, NP_036007.2</u>
RefSeq Size:	5697 bp
RefSeq ORF:	3531 bp
Locus ID:	24000
Cytogenetics:	12 E
MW:	133.5 kDa

Product images:



Circular map for MR217638