

Product datasheet for MR217600

Rad52 (NM_011236) Mouse Tagged ORF Clone

Product data:

Product Type:	Expression Plasmids
Product Name:	Rad52 (NM_011236) Mouse Tagged ORF Clone
Tag:	Myc-DDK
Symbol:	Rad52
Synonyms:	Rad52yh
Mammalian Cell Selection:	Neomycin
Vector:	pCMV6-Entry (PS100001)
E. coli Selection:	Kanamycin (25 ug/mL)
ORF Nucleotide Sequence:	>MR217600 representing NM_011236 Red=Cloning site Blue=ORF Green=Tags(s)

TTTTGTAATACGACTCACTATAGGGCGGCCGGAATTCGTCGACTGGATCCGGTACCGAGGAGATCTGCC
GCC**CGATCGCC**

ATGGCTGGGCCTGAAGAAGCAGTCCACAGAGGGTGTGACAACCATCCTCCCTTTGTTGGTGGGAAGTCTG
TGCTCCTCTTTGGACAGAGCCAGTATACAGCGGATGAATACCAGGCCATCCAGAAAGCTCTGAGACAGAG
ACTGGGTCAGAGTACATTAGCAGCCGCATGGCTGGAGGAGGTCAGAAGGTGTGTATATTGAAGGTCAT
CGGTAATTAATCTGGCCAATGAGATGTTTGGTTACAATGGCTGGGCACACTCCATCACCCAGCAAAATG
TGGATTTTGTGACCTCAACAATGGCAAGTTCTACGTGGGAGTCTGTGCATTTGTAAGGTGCAGTTAAA
GGATGGTTCTATCATGAGGACGTGGGCTATGGAGTTAGTGAGGGCCTCCGTTCAAAGGCCTTGTCACTG
GAGAAGGCCAGGAAGGAGGCTGTGACTGATGGGCTGAAGCGAGCACTCAGGAGTTTTGGGAATGCACTTG
GAACTGTATTCTGGACAAAGACTATCTGAGGTCACTAAATAAGCTTCCACGACAGCTCCCTCTTGATGT
GGATTTAACTAAAACAAAGAGAGAAGATTTTGAACCATCTGTAGAACAGGCAAGATACAACAGCTGCCGA
CAGAAATGAAGCATTGGGACTCCCCAAACCACAGGAAGTGACTTCCCTTGCAGATCAAGCCCCCACATG
ACTCGAACATTAAGCTTCAGGGGGCTAAGGACATCAGCAGCTCCTGCAGTCTGGCCGCCACCTTGGAGAG
TGACGCCACTCACAGAGGAAGCTCCGGAAGCTCCGGCAGAAGCAGCTCCAGCAGCAGTTCGGGAAACAG
ATGGAGACTCGCCGGCAGAGCCATGCACCTGCCGAAGAGGTGGCAGCCAAGCATGCGGCAGTACTCCAG
CCCTCCAAAACACAGCACCCCTGTAAGTGCAGCCTCAGAAGTCTCCAGGAGAAAGTCGTCTTTCCAGA
TAACCTTGAAGAGAACCTTGAATGTGGGACCTTACTCCAGACTTAGAGGACATCATTAAGCCCTTGTGT
AGAGCAGAACCAGCCAACTTCTGCCACTCGAACCTTCAACAACCAGGACAGCGTCCCACATATCCATT
GCCATCAGAAACCACAAGAAAAGCCTGGACCTGGGCACCTGCAGACCTGCAACACCAACCAGCATGTTCT
AGGTAGCAGAGACTCTGAACCTCATAGGAAGAGCCAGGACCTGAAGAAAAGGAACTAGATCCATCC

ACGCGTACGCGGCCGCTCGAGCAGAAACTCATCTCAGAAGAGGATCTGGCAGCAAATGATATCCTGGATT
ACAAGGATGACGACGATAAGGTTTAA



[View online >](#)

Protein Sequence: >MR217600 representing NM_011236
 Red=Cloning site Green=Tags(s)

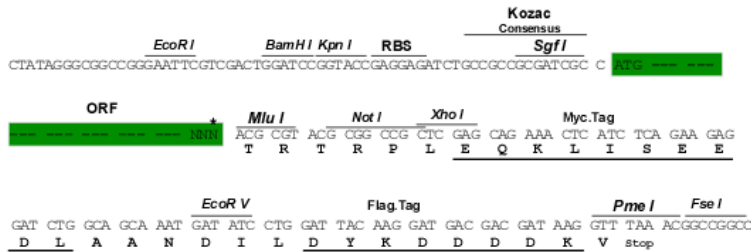
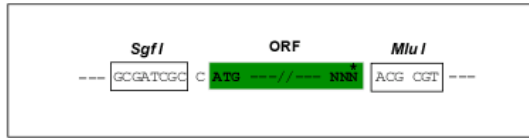
MAGPEEAVHRGCDNHPPFVGGKSVLLFGQSQYTAD EYQAIQKALRQRLGPEYISSRMAGGGQKVCYIEGH
 RVINLANEMFGYNGWAHSITQQNVDFVLDLNGKFYVGVCAFVKVQLKDGSYHEDVGYGVSEGLRSKALS
 EKARKEAVTDGLKRALRSFGNALGNCILDKDYLRSLNKLPRQLPLDVLTKTKREDFEPSVEQARYNSCR
 QNEALGLPKPQEVTPCRSSPPHDSNIKLGAKDISSSCSLAATLESDATHQRKLRKLRQKQLQQQFREQ
 METRRQSHAPAEVAAKHAAVLPAPPKHSTPVTAASELLQEKVVFDPNLEENLEMMWDLTPDLEDIIKPLC
 RAEPAQTSATRTFNNQDSVPHIHCHQKPQEKPGPHLQTCNTNQHVLSRDEPHRKSQDLKRRKLDPS

TRTRPLEQKLISEEDLAANDILDYKDDDDKV

Restriction Sites: SgfI-MluI

Cloning Scheme:

Cloning sites used for ORF Shuttling:



* The last codon before the Stop codon of the ORF

ACCN: NM_011236

ORF Size: 1257 bp

OTI Disclaimer: The molecular sequence of this clone aligns with the gene accession number as a point of reference only. However, individual transcript sequences of the same gene can differ through naturally occurring variations (e.g. polymorphisms), each with its own valid existence. This clone is substantially in agreement with the reference, but a complete review of all prevailing variants is recommended prior to use. [More info](#)

OTI Annotation: This clone was engineered to express the complete ORF with an expression tag. Expression varies depending on the nature of the gene.

Components: The ORF clone is ion-exchange column purified and shipped in a 2D barcoded Matrix tube containing 10ug of transfection-ready, dried plasmid DNA (reconstitute with 100 ul of water).

Reconstitution Method:

1. Centrifuge at 5,000xg for 5min.
2. Carefully open the tube and add 100ul of sterile water to dissolve the DNA.
3. Close the tube and incubate for 10 minutes at room temperature.
4. Briefly vortex the tube and then do a quick spin (less than 5000xg) to concentrate the liquid at the bottom.
5. Store the suspended plasmid at -20°C. The DNA is stable for at least one year from date of shipping when stored at -20°C.

RefSeq: [NM_011236.2](#), [NP_035366.2](#)

RefSeq Size: 1695 bp

RefSeq ORF: 1260 bp

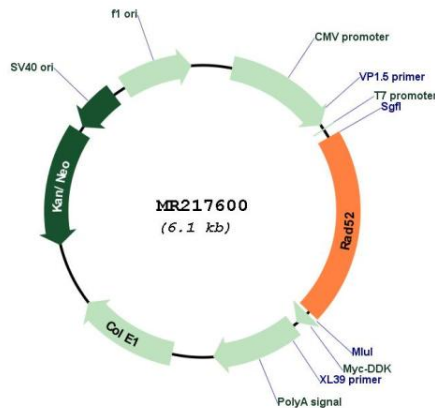
Locus ID: 19365

Cytogenetics: 6 56.86 cM

MW: 47.2 kDa

Gene Summary: Involved in double-stranded break repair. Plays a central role in genetic recombination and DNA repair by promoting the annealing of complementary single-stranded DNA and by stimulation of the RAD51 recombinase (By similarity).[UniProtKB/Swiss-Prot Function]

Product images:



Circular map for MR217600