

## Product datasheet for MR217590

### Chn1 (NM\_001166604) Mouse Tagged ORF Clone

#### Product data:

Product Type:	Expression Plasmids
Product Name:	Chn1 (NM_001166604) Mouse Tagged ORF Clone
Tag:	Myc-DDK
Symbol:	Chn1
Synonyms:	0610007119Rik; 0710001E19Rik; 1700112L09Rik; 2900046J01Rik; AI413815; ARHGAP2
Mammalian Cell Selection:	Neomycin
Vector:	pCMV6-Entry (PS100001)
E. coli Selection:	Kanamycin (25 ug/mL)
ORF Nucleotide Sequence:	>MR217590 representing NM_001166604 Red=Cloning site Blue=ORF Green=Tags(s)

TTTTGTAATACGACTCACTATAGGGCGGCCGGAATTCGTCGACTGGATCCGGTACCGAGGAGATCTGCC  
GCC**CGGATCGCC**

ATGCCATCCAAGAGTCTTGGTCGGGGAGGAAAGCTAACAGAGCCACAGTCCACAAAGCAAAACCCGAGG  
GCCGGCAGCAAGGCTTACTGATAGCAGCCTTGGGAATGAAACTGGGCTCTCAAAGTCATCTGTGACAAT  
CTGGCAACCTCTGAAACTCTTTGCTTATTCGCAGTTGACATCACTTGTTAGAAGAGCAACTCTGAAAGAA  
AATGAACAAATTCAAAATATGAAAAGGTTCACAATTTCAAGGTGCATACGTTCCGAGGGCCACACTGGT  
GTGAATACTGTGCCAATTCATGTGGGCCTCATTGCTCAGGGAGTGAAATGTGCAGGTCTTAATCTGA  
AGGACTCTACCGAGTGCAGGATTTAGTGACCTGATTGAAGATGTCAAGATGGCTTTTGATAGAGATGGT  
GAGAAGGCGGATATTTCTGTGAACATGTATGAGGACATCAACATTACTGCTGGTGCACCTAAACTGTACT  
TCAGGGATCTGCCAATTCCTCTCATCACATACGATGCCTACCCCAAGTTCATTGAGTCTGCCAAAATTAT  
GGACCCTGACGAGCAATTGGAGACCCCTCACGAAGCACTGAGATCGCTGCCGCCTGCCACTGCGAGACG  
CTCCGGTACCTCATGGCGCATCTCAAGAGAGTGACCCTTCATGAGAAGGAGAATCTGATGAGTGCAGAGA  
ACCTTGGGATCGTGTGGACCAACCCTCATGAGATCCCCAGAGCTCGACCCCATGGCCGCCCTGAACGA  
CATACGCTATCAGAGACTGGTGGTGGAGCTGCTTATCAAAAACGAAGACATTTTATTT

**ACGCGT**ACGCGGCCGCTCGAGCAGAAACTCATCTCAGAAGAGGATCTGGCAGCAAATGATATCCTGGATT  
ACAAGGATGACGACGATAAGGTTTAA



[View online »](#)

**Protein Sequence:** >MR217590 representing NM\_001166604  
 Red=Cloning site Green=Tags(s)

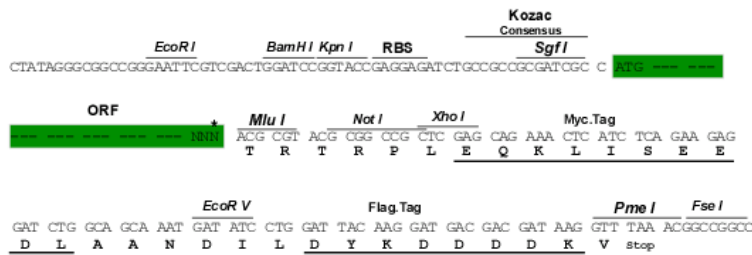
MPSKESWSGRKANRATVHKAKPEGRQQGLLIAALGMKLGSKSSVTIWQPLKLFAYSQLTSLVRRATLKE  
 NEQIPKYEVHNFKVHTFRGPHWCEYCANFMWGLIAQGVKAGLNSEGLYRVSGFSDLIEDVKMAFDRDG  
 EKADISVNMVEDINIITGALKLYFRDLPIPLITYDAYPKFIESAKIMDPDEQLETLHEALRSLPPAHCET  
 LRYLMAHLKRVTLHEKENLMSAENLGIVFGPTLMRSPELDPMALNDIRYQRLVVELLIKNEIDILF

TRTRPLEQKLISEEDLAANDILDYKDDDDKV

**Restriction Sites:** Sgfl-MluI

**Cloning Scheme:**

Cloning sites used for ORF Shuttling:



\* The last codon before the Stop codon of the ORF

**ACCN:** NM\_001166604

**ORF Size:** 828 bp

**OTI Disclaimer:** The molecular sequence of this clone aligns with the gene accession number as a point of reference only. However, individual transcript sequences of the same gene can differ through naturally occurring variations (e.g. polymorphisms), each with its own valid existence. This clone is substantially in agreement with the reference, but a complete review of all prevailing variants is recommended prior to use. [More info](#)

**OTI Annotation:** This clone was engineered to express the complete ORF with an expression tag. Expression varies depending on the nature of the gene.

**Components:** The ORF clone is ion-exchange column purified and shipped in a 2D barcoded Matrix tube containing 10ug of transfection-ready, dried plasmid DNA (reconstitute with 100 ul of water).

**Reconstitution Method:**

1. Centrifuge at 5,000xg for 5min.
2. Carefully open the tube and add 100ul of sterile water to dissolve the DNA.
3. Close the tube and incubate for 10 minutes at room temperature.
4. Briefly vortex the tube and then do a quick spin (less than 5000xg) to concentrate the liquid at the bottom.
5. Store the suspended plasmid at -20°C. The DNA is stable for at least one year from date of shipping when stored at -20°C.

**RefSeq:** [NM\\_001166604.1](#), [NP\\_001160076.1](#)

**RefSeq Size:** 3688 bp

**RefSeq ORF:** 831 bp

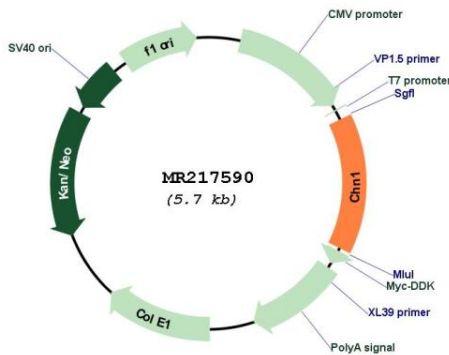
**Locus ID:** 108699

**Cytogenetics:** 2 C3

**MW:** 31.9 kDa

**Gene Summary:** GTPase-activating protein for p21-rac and a phorbol ester receptor. May play an important role in neuronal signal-transduction mechanisms (By similarity). Involved in the assembly of neuronal locomotor circuits as a direct effector of EPHA4 in axon guidance.[UniProtKB/Swiss-Prot Function]

**Product images:**



Circular map for MR217590